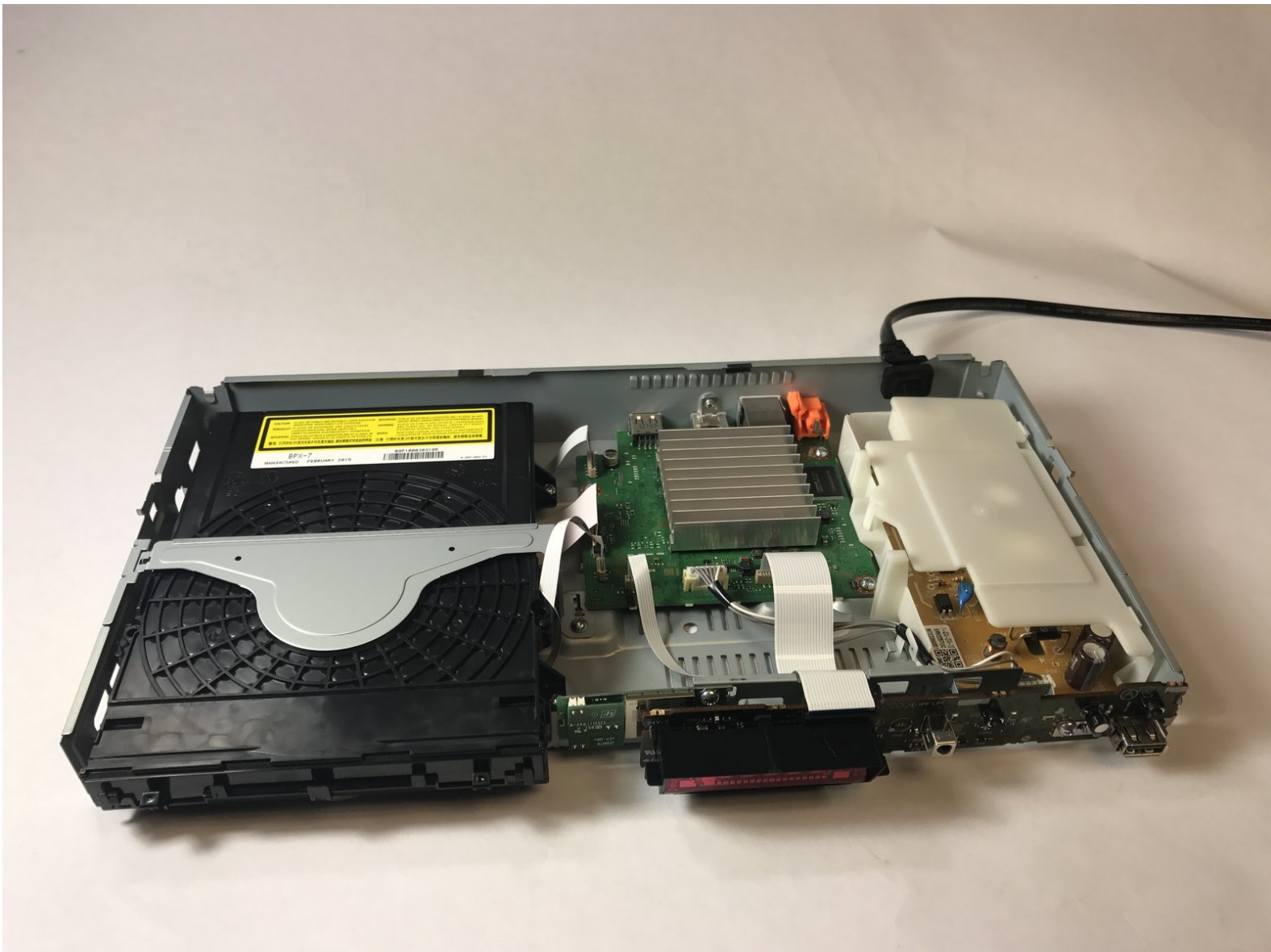




Sony BDP-BX620 Motherboard Replacement

Removing the Motherboard.

Written By: Benjamin



INTRODUCTION

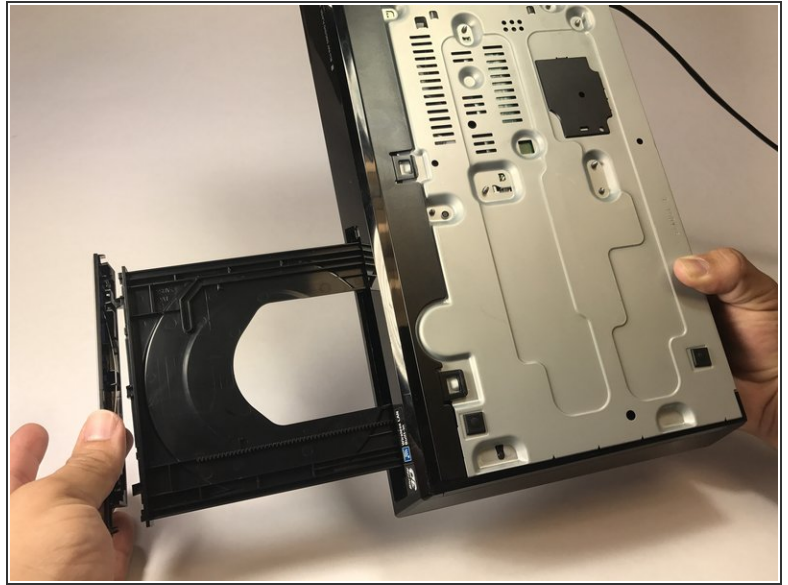
This guide will guide you through removing and setting the motherboard.




TOOLS:

- [Phillips #0 Screwdriver](#) (1)
-

Step 1 — Outer Cover



- Power on the device, eject the disk tray, and power off the device.
- Turn the device over.
- Lightly apply downward pressure on the black covering on the disk tray until it snaps off.

 Caution, applying too much pressure can break the black covering.


Step 2



- Turn the device around.
 - Using a Phillips screw driver, remove the screws on both ends of the device circled red in the image.
 - Slide the side covers on either side towards the back of the device.
- i** There is a back cover on either side of the device.

Step 3



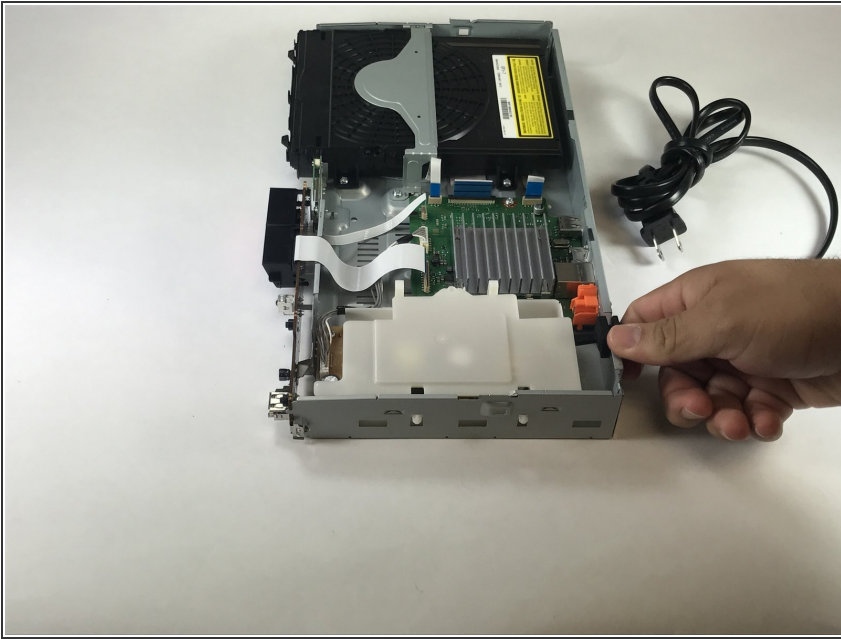
 This step might require someone to help unclasp the plastic clips.

- Turn the device so that the bottom is facing up.
- In the bottom, unclip the three plastic clips circled in red.
- On either side, unclip the plastic clip circled in red
- Slide the black covering forwards to remove.

 All five clips have to be unclaspd for the covering to be removed.

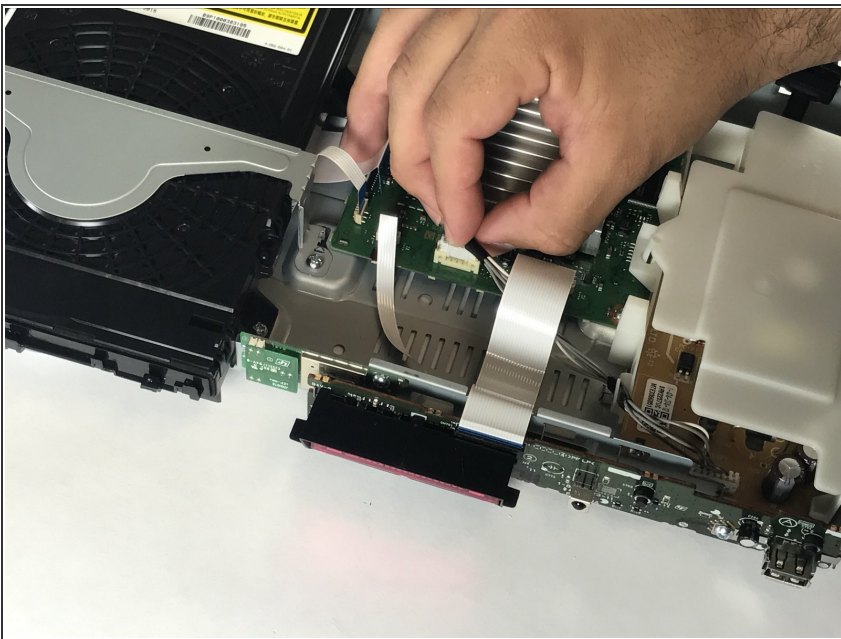
 Careful not to break the plastic clips when putting it back on.

Step 4 — Power Module



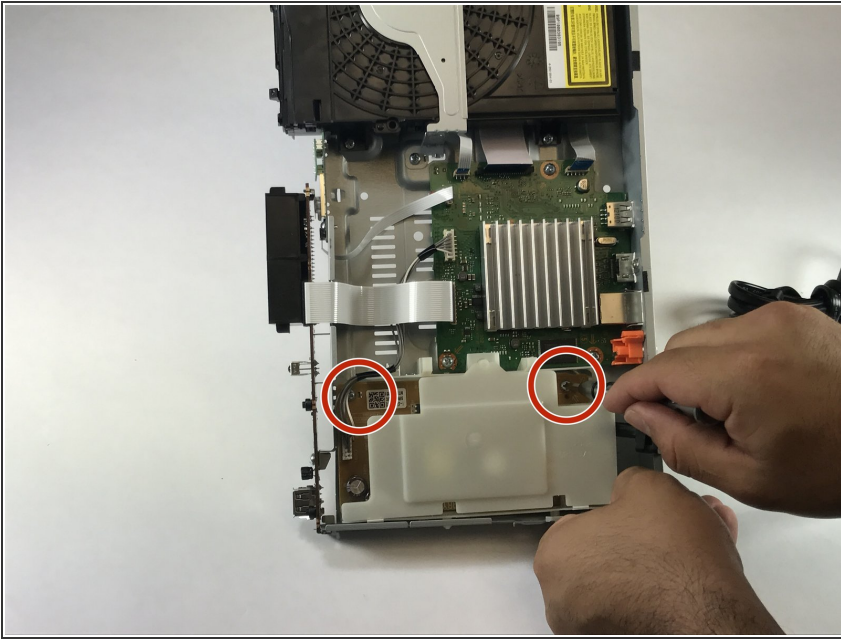
- Gently pull on up on the power cord to unlatch it from the metal body of the device.

Step 5



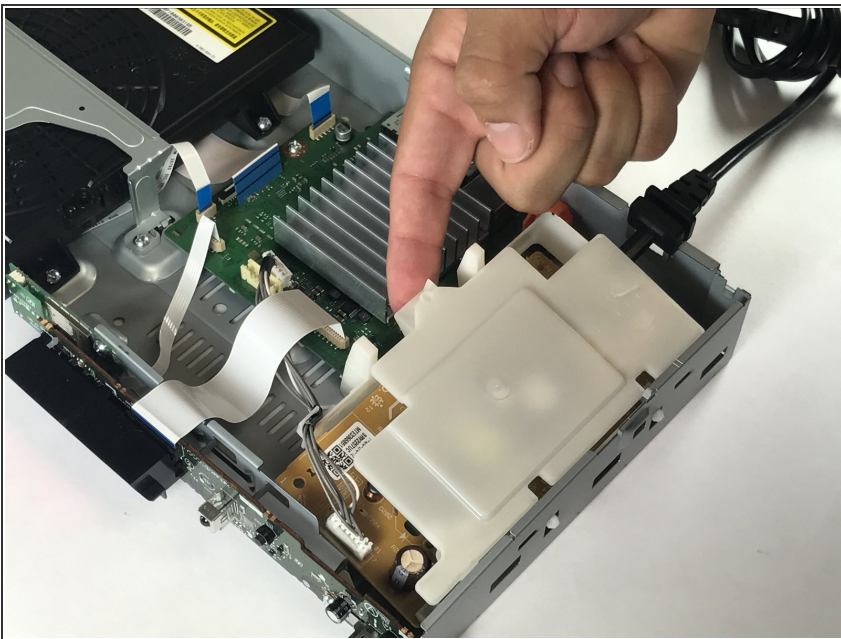
- Remove the cable connecting the Power Port to the Motherboard by pulling up.
- ⚠ It may be difficult to remove. Pull from the plastic part and not the wiring to prevent the wiring from breaking.

Step 6



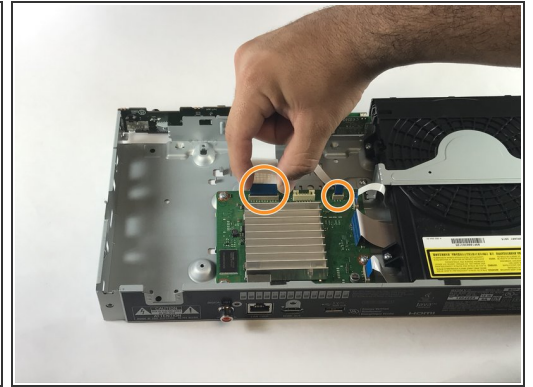
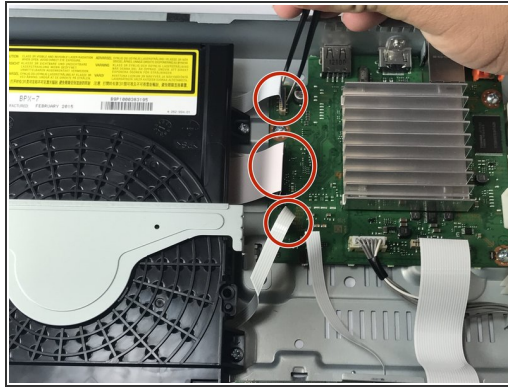
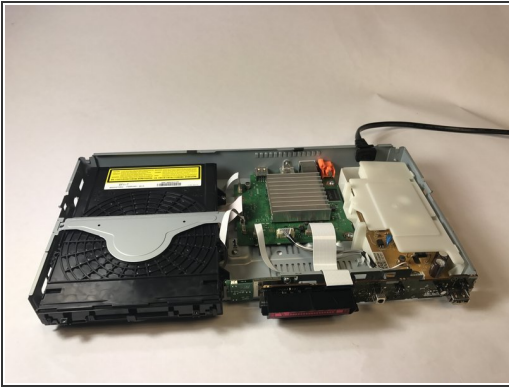
- Remove both screws using the Phillips screw driver.

Step 7



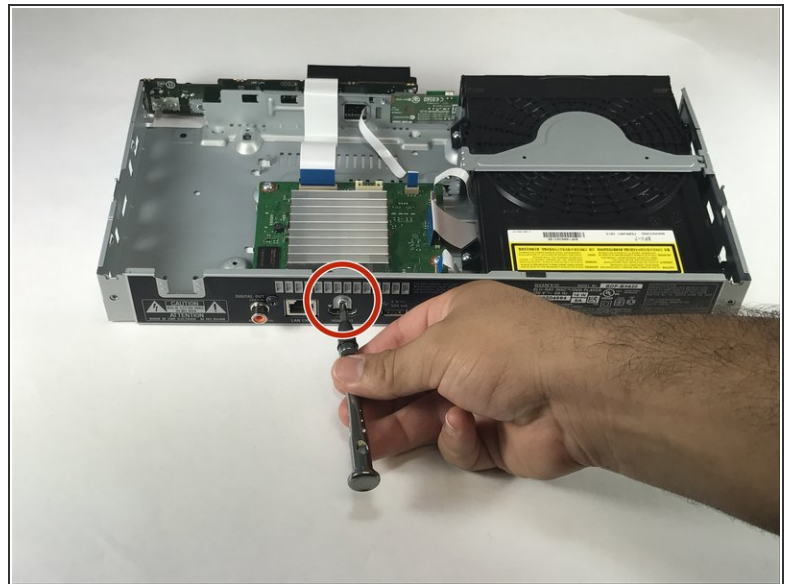
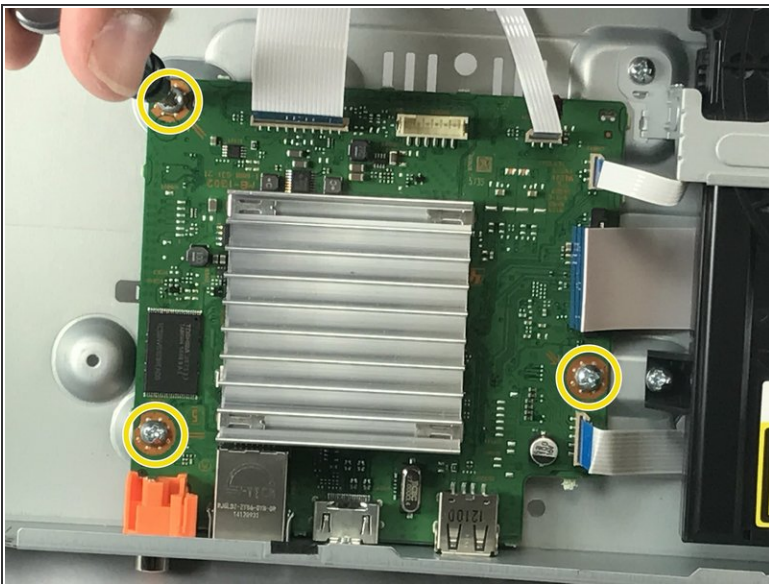
- Lift the Power Module up from the side located inside the device.
- Pull up and away to remove the Power Module

Step 8 — Motherboard



- Remove the white bands connecting the motherboard to the display. The thick white band in the middle needs the release button to be pressed down to release the band.
- Remove the white bands connecting the motherboard to the disk drive this should not be done with much force.

Step 9



- Once the bands are removed remove the three screws holding the motherboard to the surface of the player.
- Finally remove the screw from the back of the player holding the motherboard in place.

To reassemble your device, follow these instructions in reverse order.