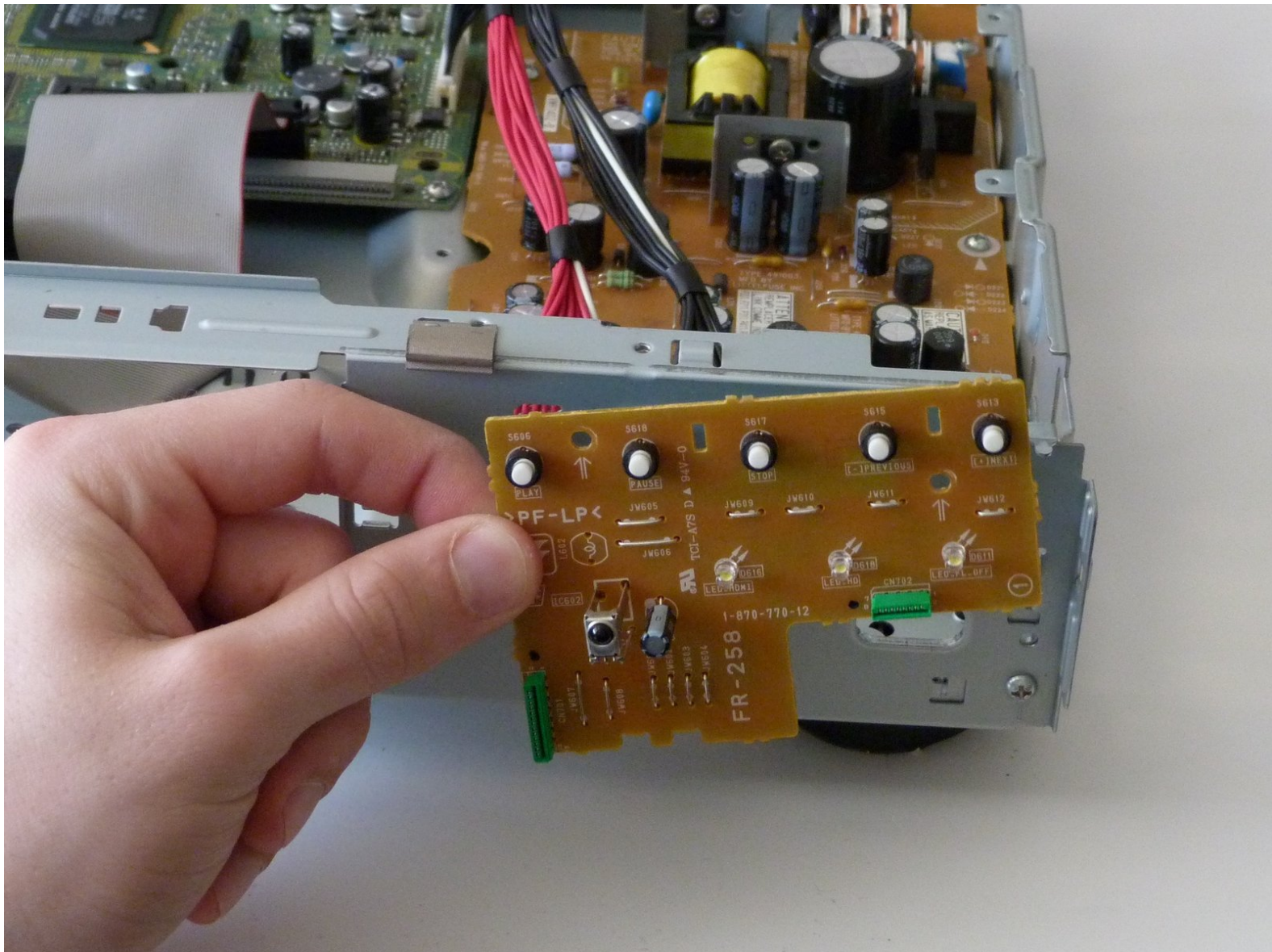




# Sony BDP-S1 Button Replacement

This guide explains step by step how to unjam or replace the buttons on the front chassis.

Written By: Mac



---

## INTRODUCTION

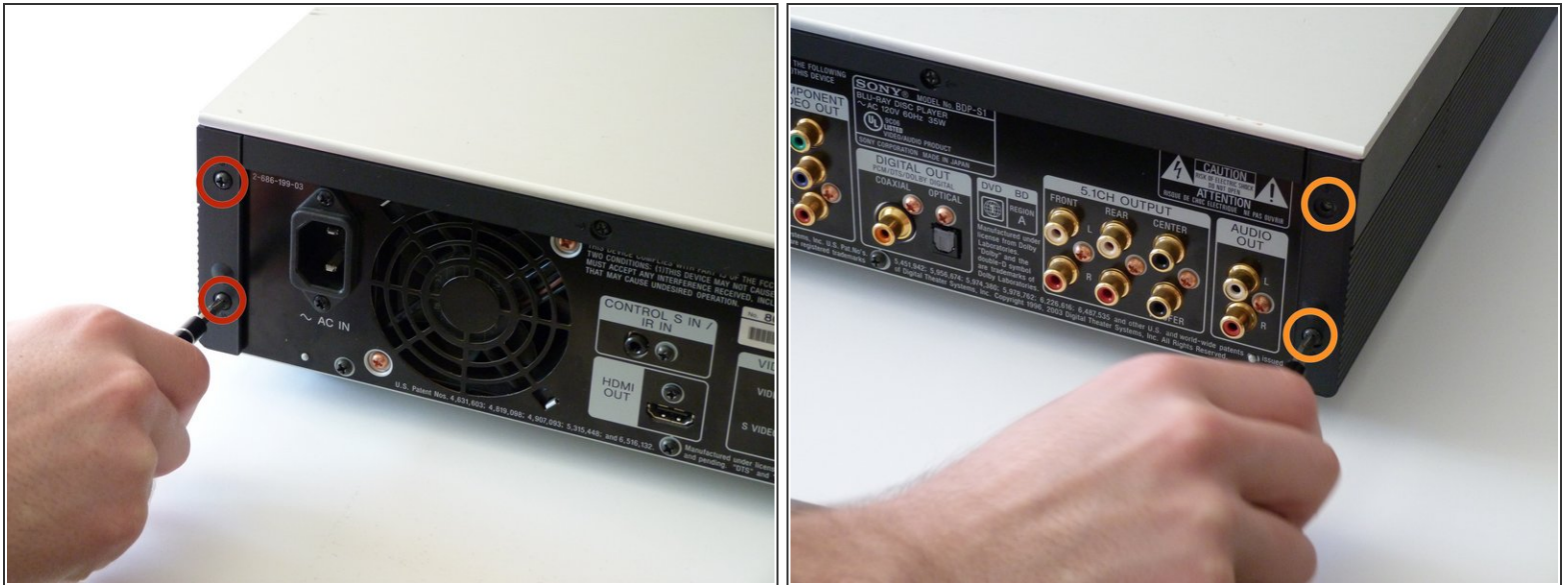
If your buttons keep getting stuck on your Blu-Ray Player, you will see in this guide that there are only a few screws to remove to easily get to the front panel.



### TOOLS:

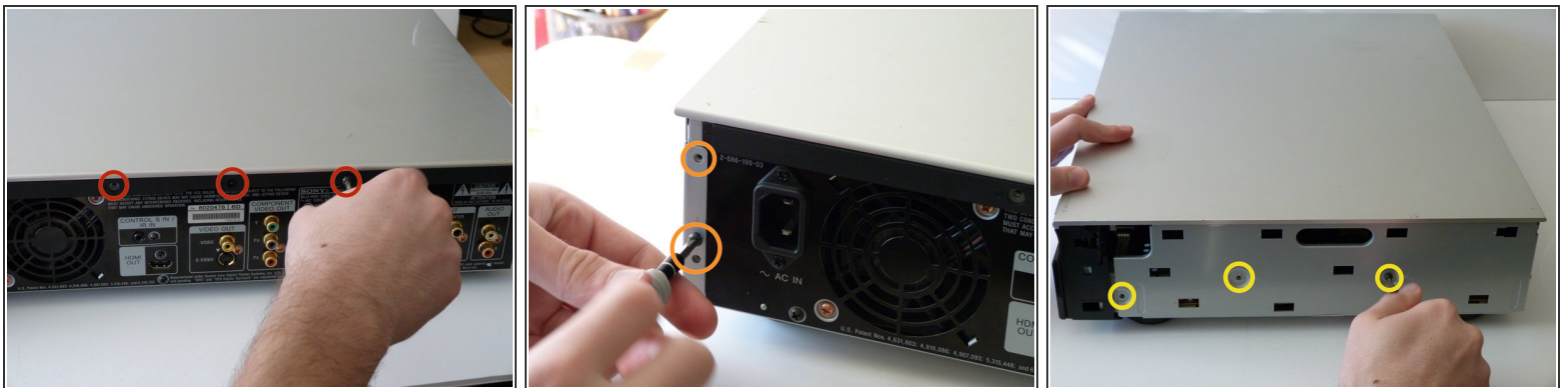
- [iFixit Opening Tools](#) (1)
  - [Phillips #2 Screwdriver](#) (1)
-

## Step 1 — Sony BDP-S1: Getting inside the device



- Remove the 12mm screws with the Philips #2 screwdriver which keep the plastic panels in place.
- Don't forget, there are two more 12mm screws on the other side as well.

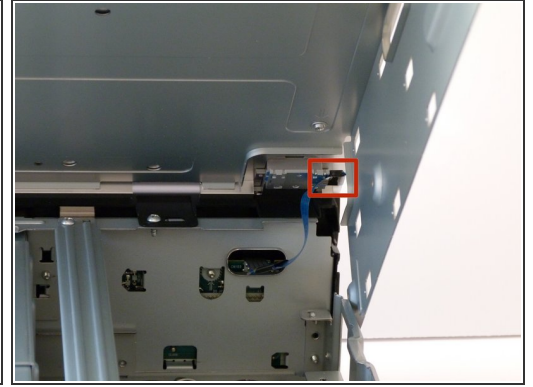
## Step 2




- First, remove the three 12mm black screws holding the top panel on (Phillips #2).
- Then, remove the two 12mm black screws - one on each side of the back of the device - holding the top panel on.
- Lastly, remove the three 12mm black screws on each side of device.

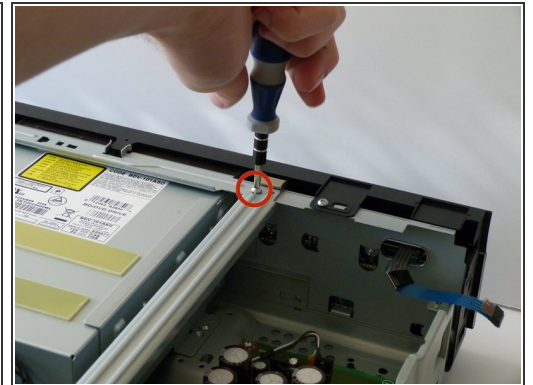
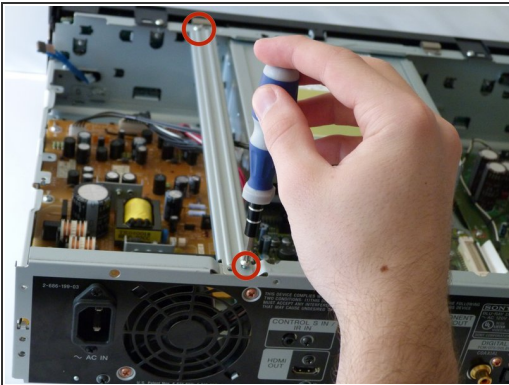


### Step 3



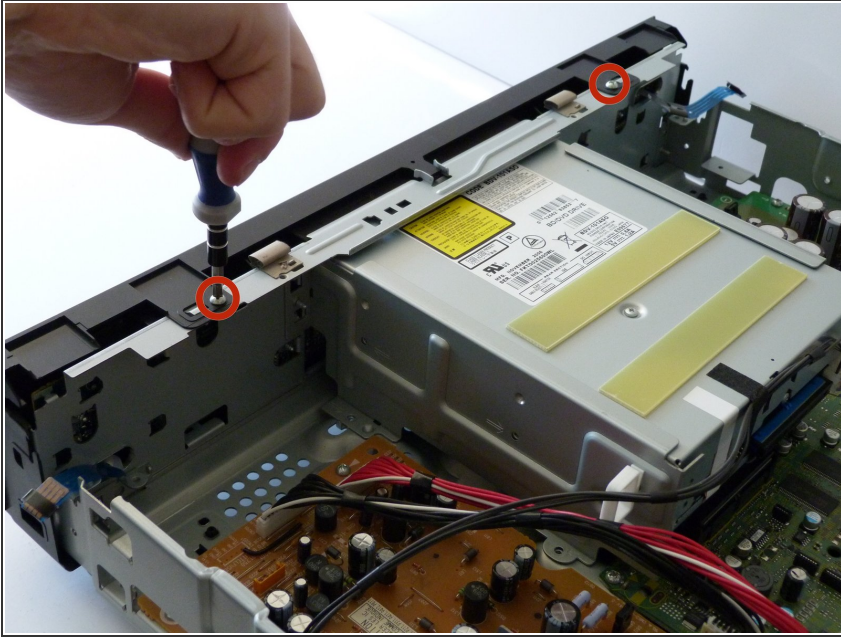
-  Carefully lift up the top panel, because there are two blue ribbon cables that must be disconnected before removing the panel, and we do NOT want them to break.
- After gently disconnecting the two ribbon cables (you can just pull them out with your hand), take the top off and set it to the side.

### Step 4



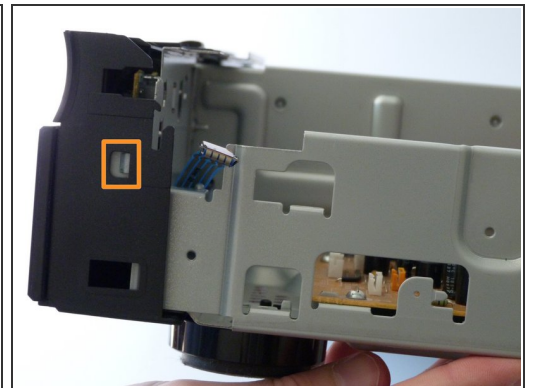
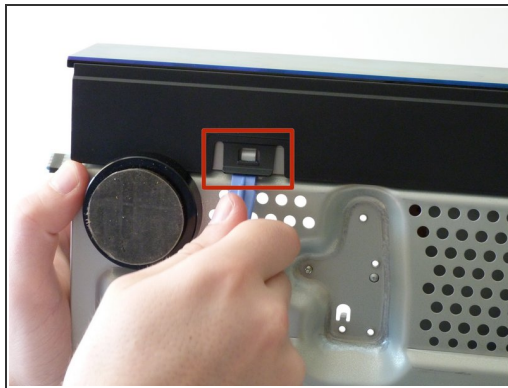
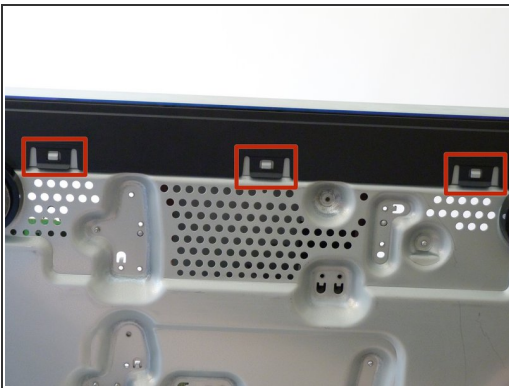
- After the top is off, you'll see that there are two metal bars that go across the top of the device.
- Remove each bar by unscrewing the two 10mm silver screws on each end.

## Step 5 — Front Panel Buttons



- Now, on the front panel, you will want to remove the two 10mm screws on top of the device.

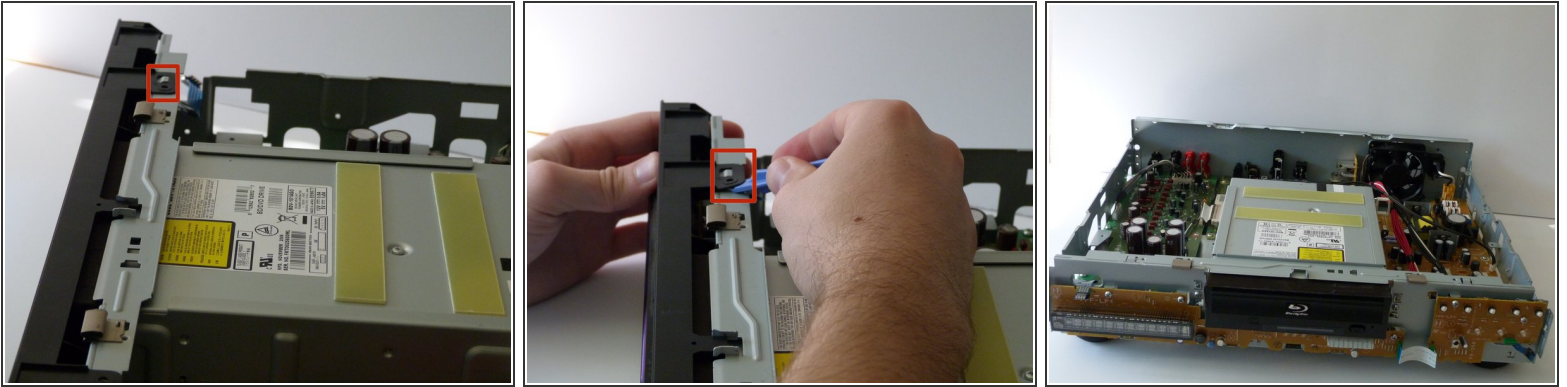
## Step 6



- Place your blu-ray player so that it's facing the ceiling and support it with your non-dominant hand.
- With your screwing hand, use the plastic opening tool to gently undo the three clips on the bottom of the device.
- Then put the device back down and undo the two clips on the side.

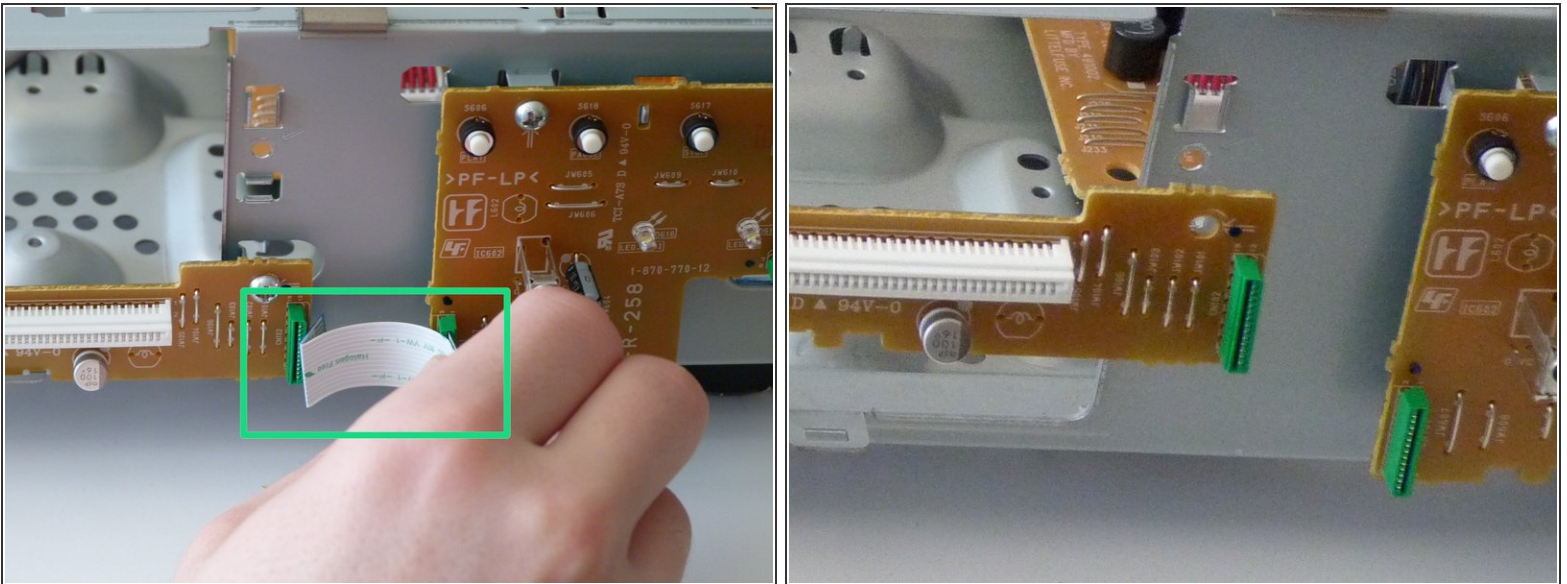


## Step 7



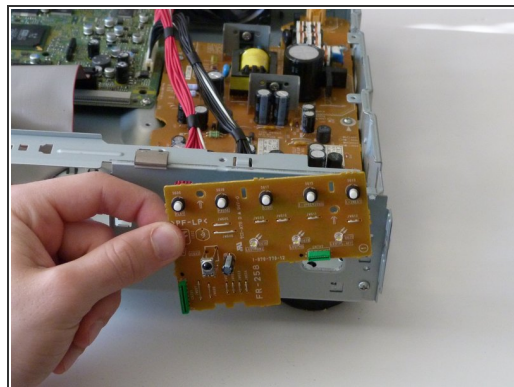
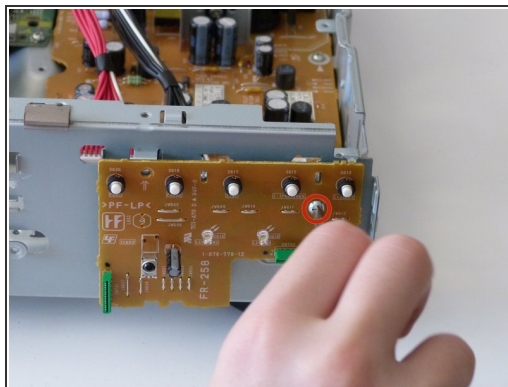
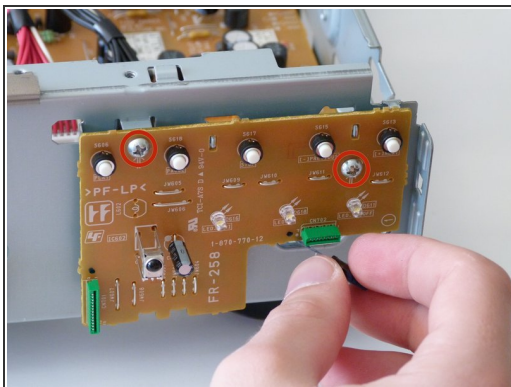
- On the top of the panel, use the plastic opening tool to unhook the top two clips.
- Now the front should be detached so you can remove the front panel from the rest of the device.

## Step 8



- Remove the ribbon cable found on the front panel by gently pulling at the base of the cable at each end.
- NOTE: In these photos, the disk drive is removed. You don't have to remove the disk drive during this particular guide.

## Step 9



- Finally, remove the two 10mm screws on the front.
- Congratulations! You have taken out the front panel!

To reassemble your device, follow these instructions in reverse order.