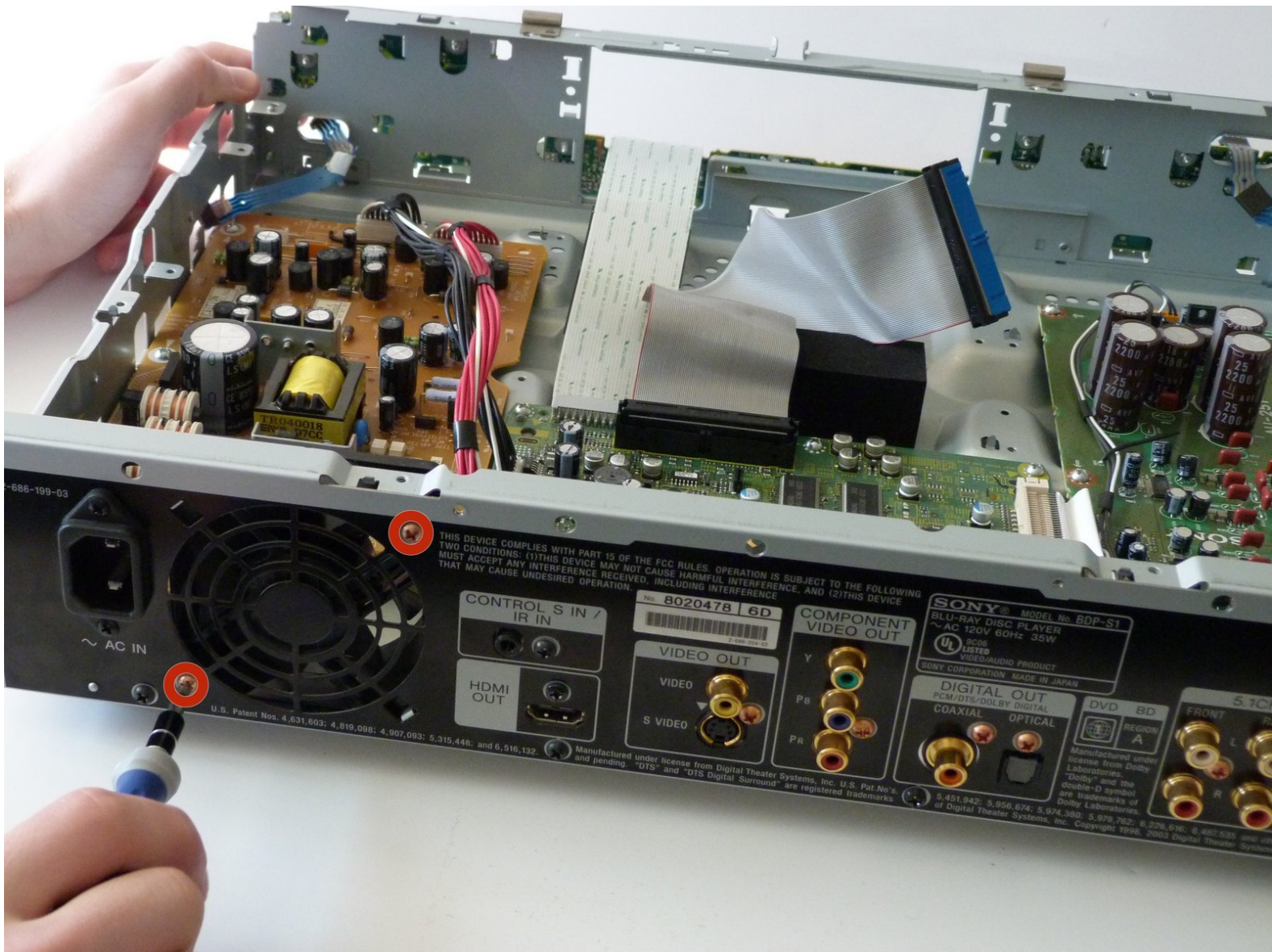




# Sony BDP-S1 Fan Replacement

A broken fan can cause your player to overheat. Follow this guide to replace your broken fan.

Written By: Nicolas Kennedy



---

## INTRODUCTION

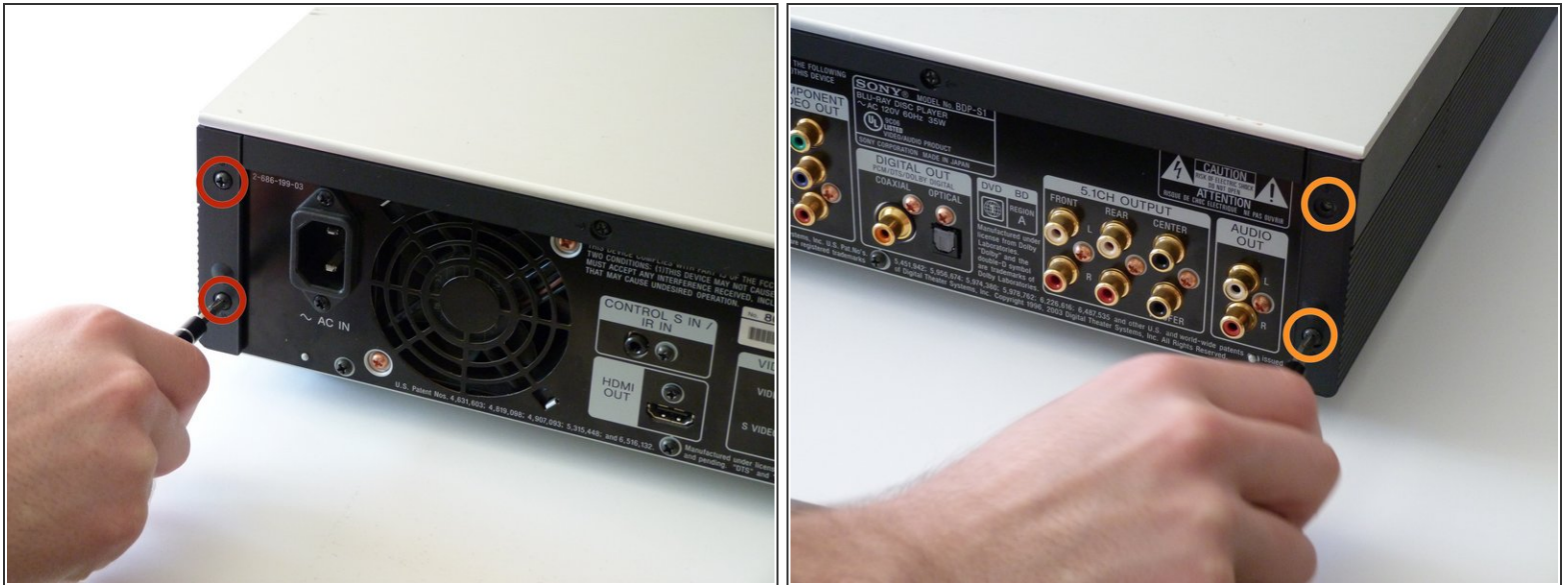
If you are having issues with overheating it is most likely being caused by a faulty fan. In this guide we will open the player up by removing the connecting screws and then removed the faulty fan so it can be replaced for a new one.



### TOOLS:

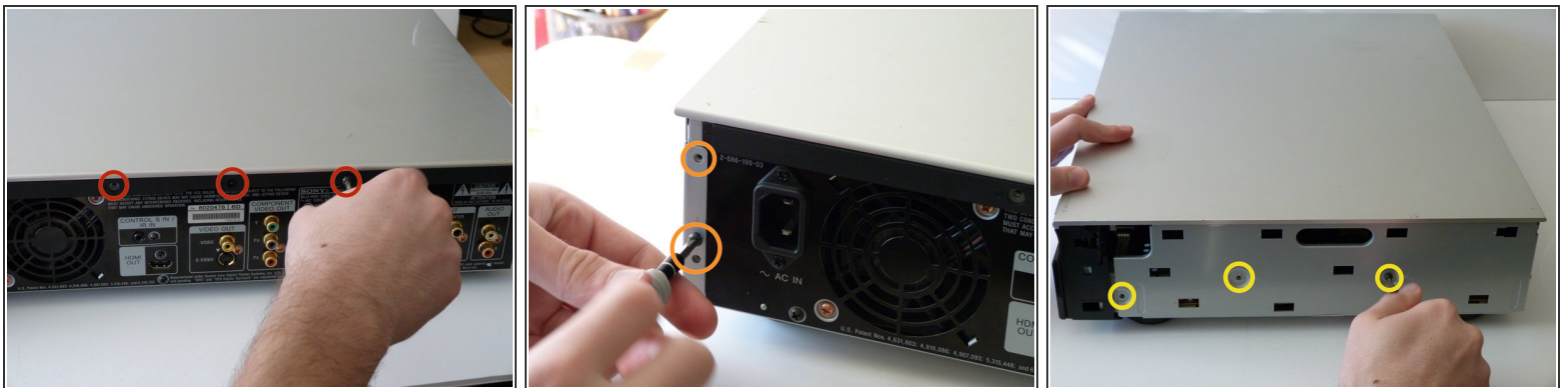
- [Phillips #2 Screwdriver](#) (1)
-

## Step 1 — Sony BDP-S1: Getting inside the device



- Remove the 12mm screws with the Philips #2 screwdriver which keep the plastic panels in place.
- Don't forget, there are two more 12mm screws on the other side as well.

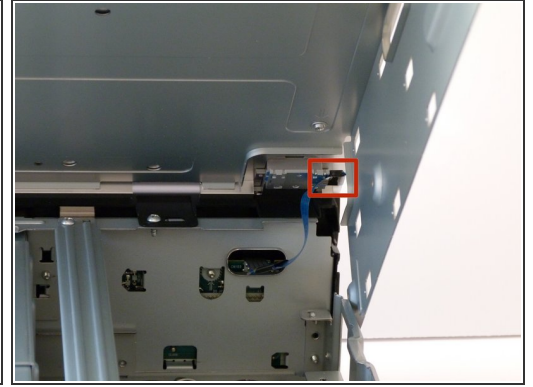
## Step 2




- First, remove the three 12mm black screws holding the top panel on (Phillips #2).
- Then, remove the two 12mm black screws - one on each side of the back of the device - holding the top panel on.
- Lastly, remove the three 12mm black screws on each side of device.



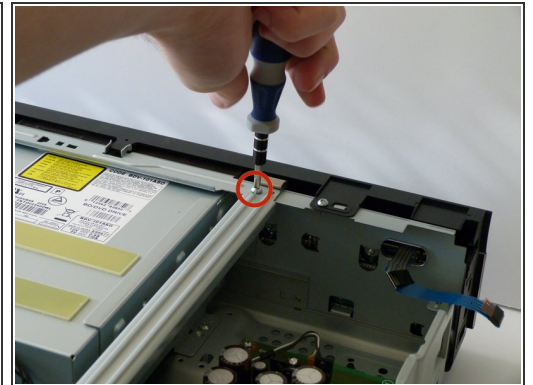
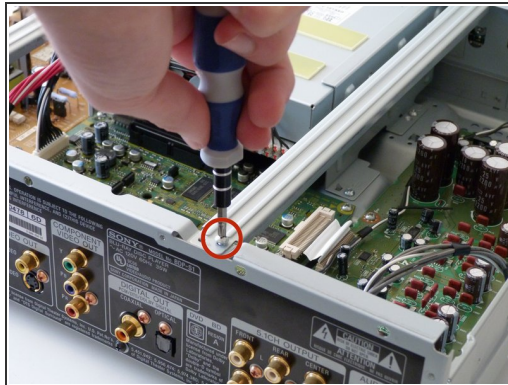
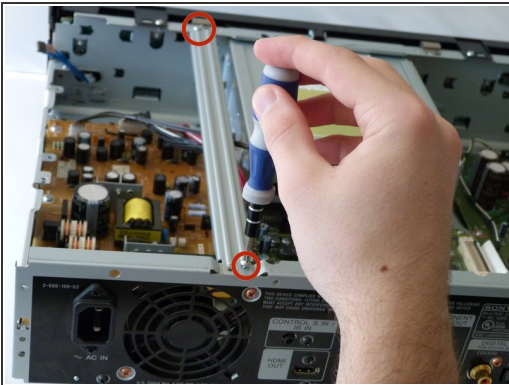
### Step 3



 Carefully lift up the top panel, because there are two blue ribbon cables that must be disconnected before removing the panel, and we do NOT want them to break.

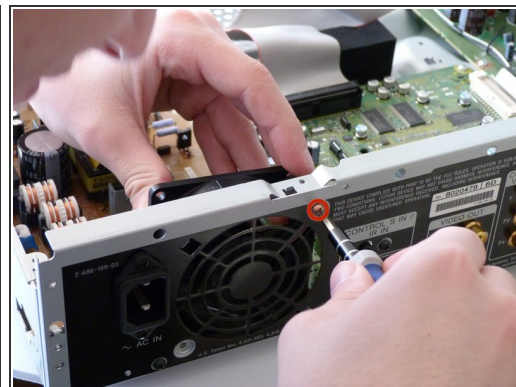
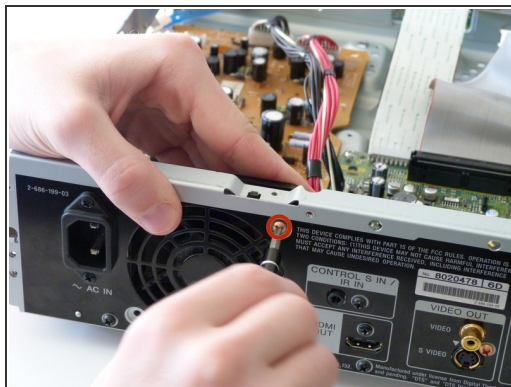
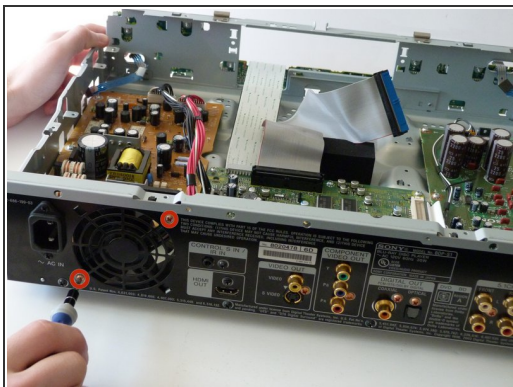
- After gently disconnecting the two ribbon cables (you can just pull them out with your hand), take the top off and set it to the side.

### Step 4



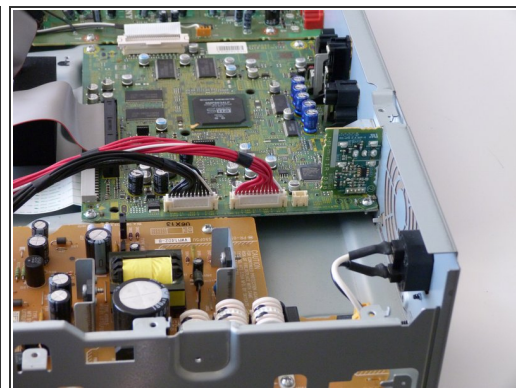
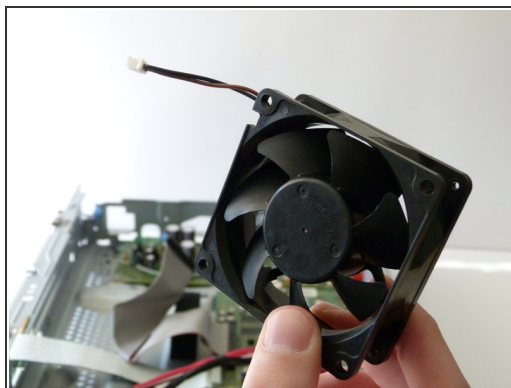
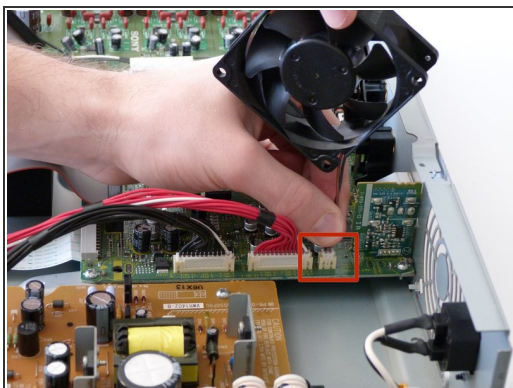
- After the top is off, you'll see that there are two metal bars that go across the top of the device.
- Remove each bar by unscrewing the two 10mm silver screws on each end.

## Step 5 — Fan



- First we need to unscrew the fan from before we can remove it.
- Remove both copper colored 10mm screws with a #2 phillips screwdriver.
- As you remove the second screw, pull the fan inward to remove it from the remainder of the case. It should now only be connected to the case through a cable attached to the circuit board.
- ⓘ The disk drive is removed in the pictures, however this is not necessary to replace the fan and can be ignored.

## Step 6



- We will now completely remove the fan from the player.
- Carefully detach the cable from the fan to the circuit board by pulling on the cable connecting the fan to the circuit board.
- You are now ready to install the new fan!

To reassemble your device, follow these instructions in reverse order.