



Sony BDP-S3200 Disk Drive Replacement

This guide shows you how to replace the disk drive for the Sony BDP-S3200 step by step.

Written By: Tan Nguyen



INTRODUCTION

Use this guide to replace the disk drive in your device.



TOOLS:

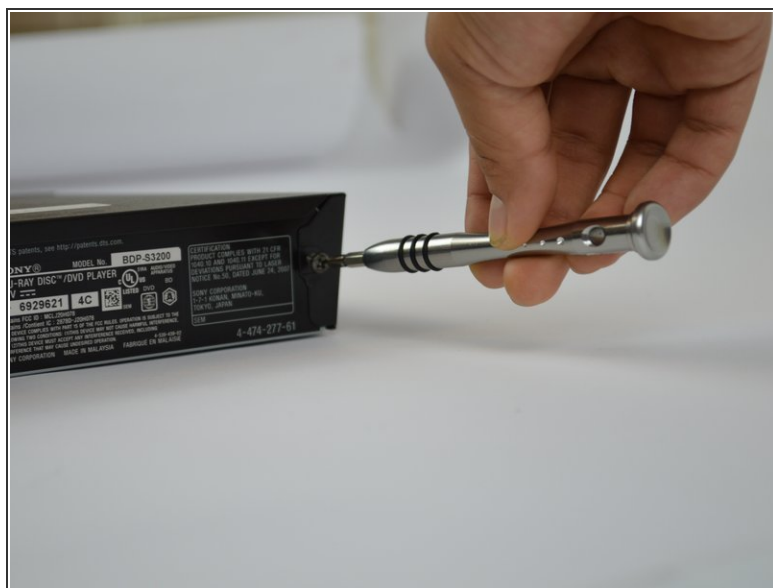
- [Phillips #1 Screwdriver](#) (1)
-

Step 1 — Sony BDP-S3200 Disassembly



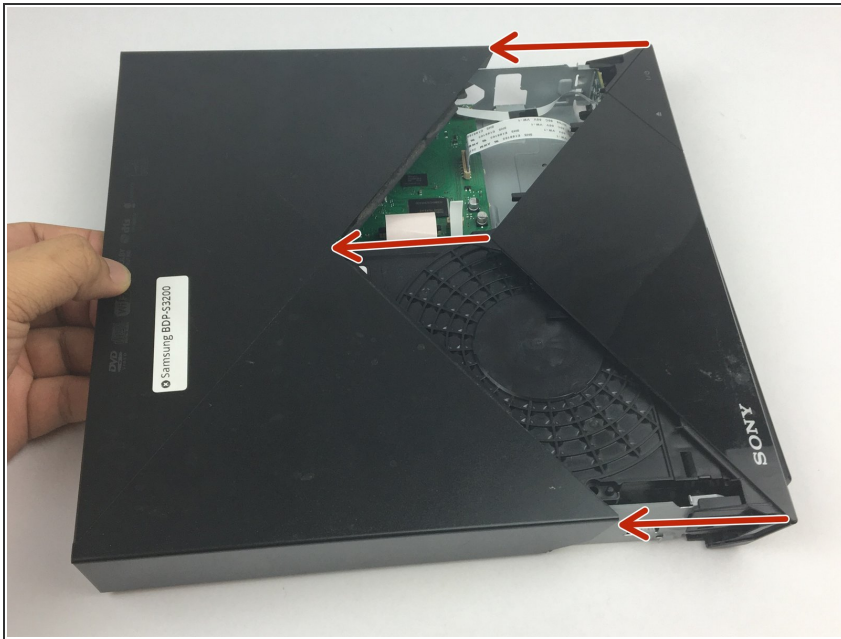
- Remove all cables from the device.

Step 2



- Use a #1 Phillips screwdriver to remove the three screws located in the back of the device.

Step 3



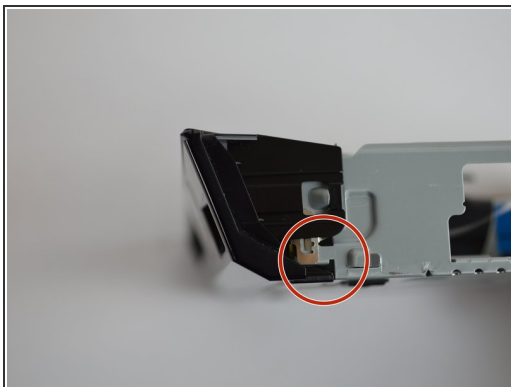
- Pull the top cover off by sliding back from the device once the screws have been taken out.

Step 4 — Disk Drive Replacement



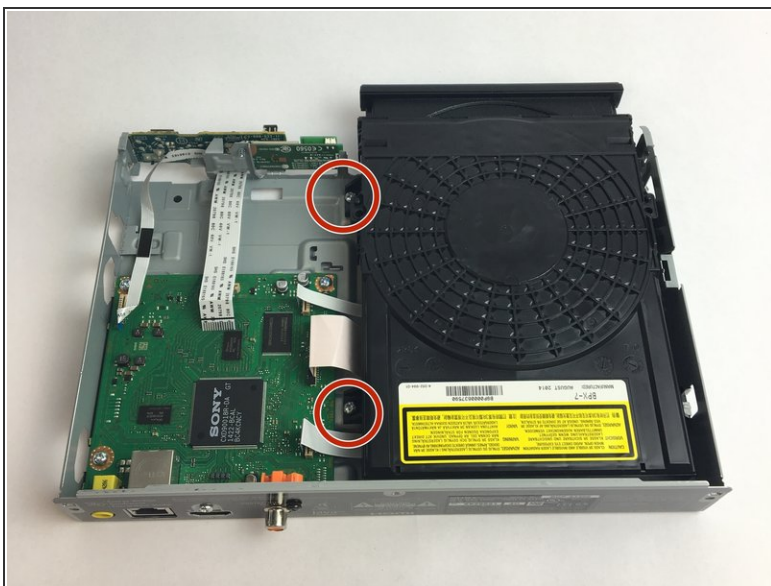
- Locate the disk drive

Step 5



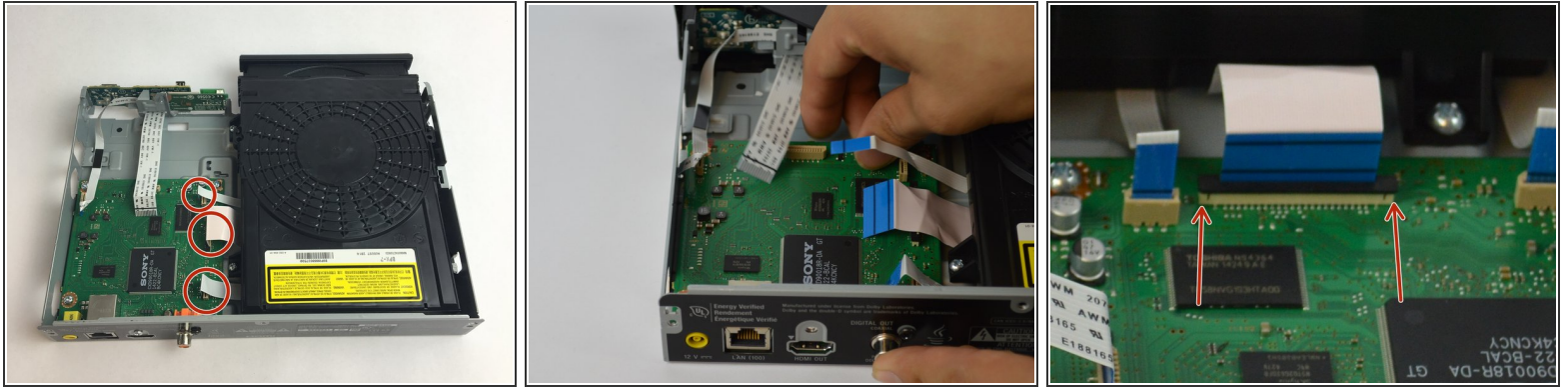
- Lightly lift off the hook on both front rear side and the bottom of the device to remove the front panel

Step 6



- Remove the two screws that attach the disk drive to the frame using a #1 Phillips screwdriver.

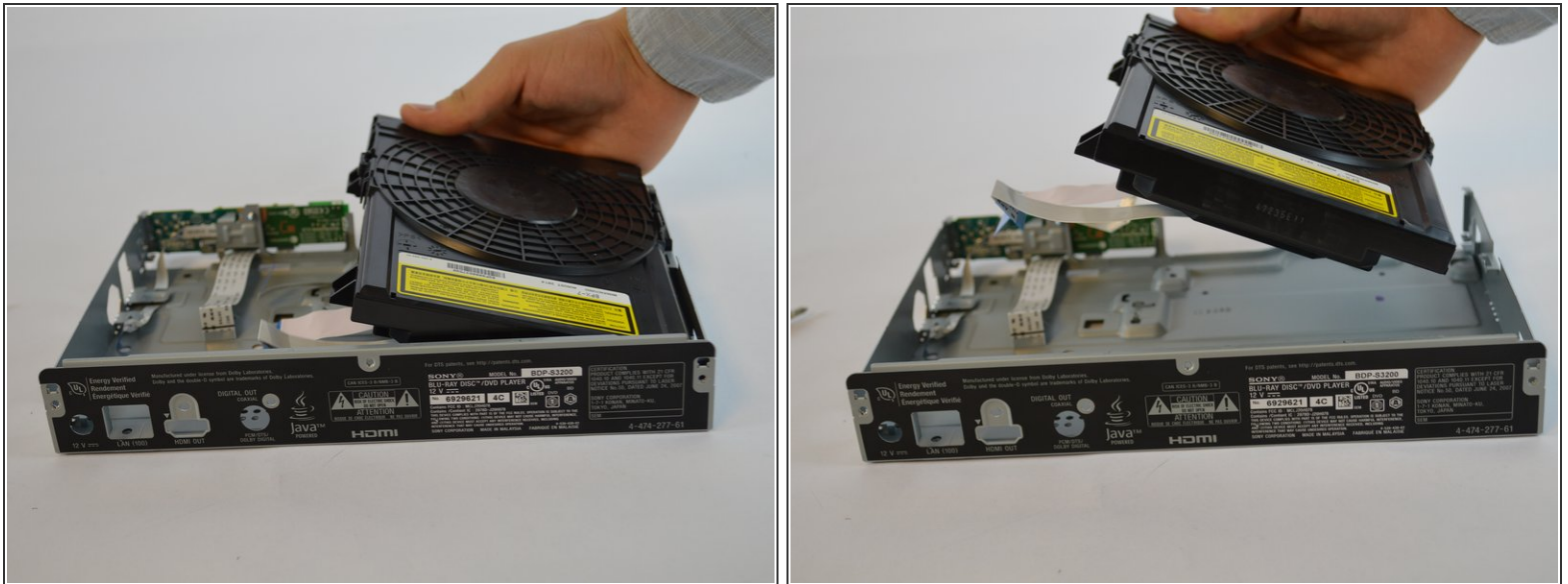
Step 7



- Carefully pull the (3) three bands off vertically.

⚠ NOTE: There is a latch that needs to be lifted off before pulling the band out for the middle band.

Step 8



- Lift the disk drive off of the device

To reassemble your device, follow these instructions in reverse order.