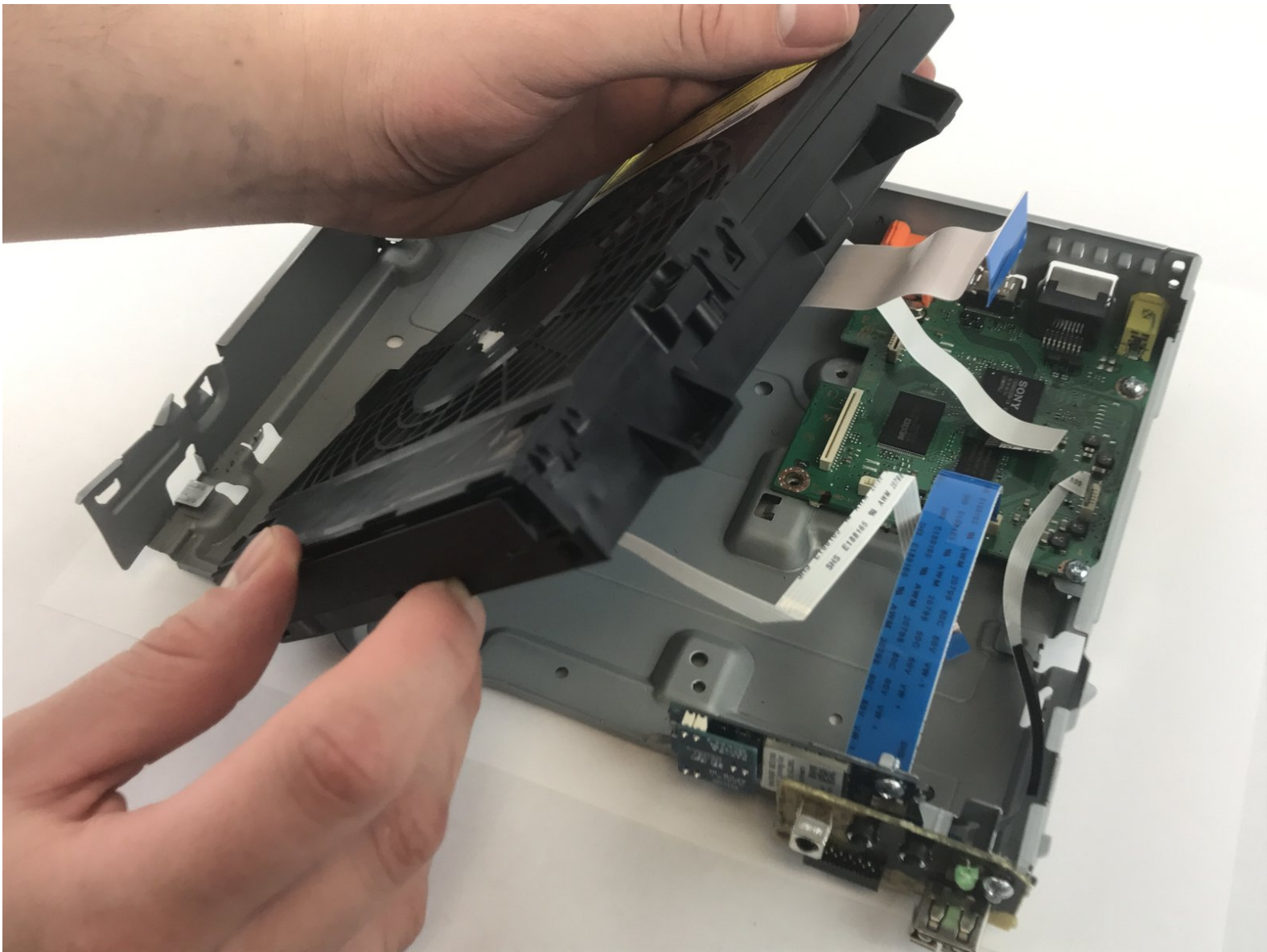




# Sony BDP-S3700 Disc Drive Replacement

The internal disc reader interprets the Blu-ray discs in order to play the movie. This guide shows how to replace the disc reader in the Sony BDP-S3700.

Written By: Luiz Barreto



---

## INTRODUCTION

This guide shows how to replace the disc drive in the Sony BDP-S3700.



### TOOLS:

- [Phillips #1 Screwdriver](#) (1)
-

## Step 1 — Front Panel



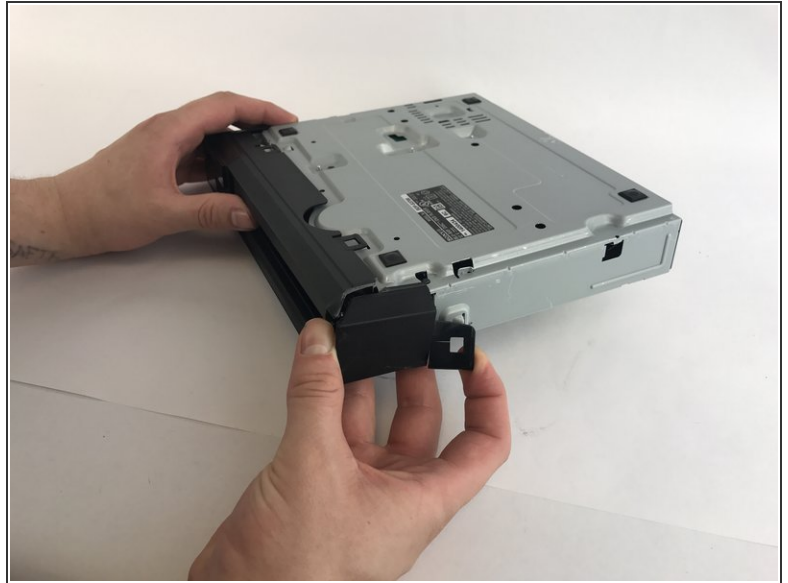
- Use the PH1 screwdriver to remove the two 9mm screws on the back of the Blu-ray player.

## Step 2



- Remove the back of the device by slowly sliding the rear outer housing backwards.

### Step 3



- Turn the Blu-ray over
- Pry open the clips under and on the sides

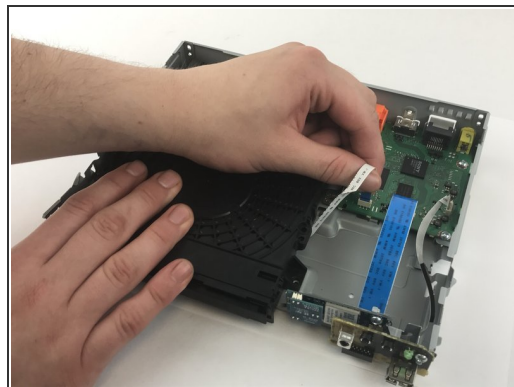
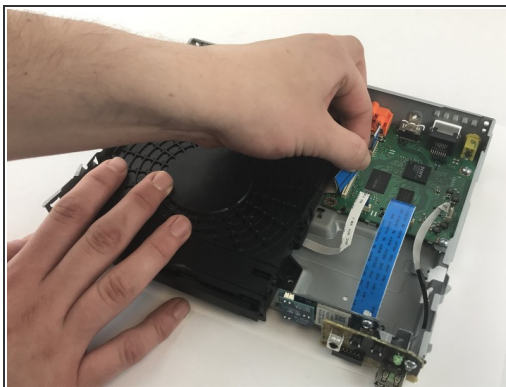
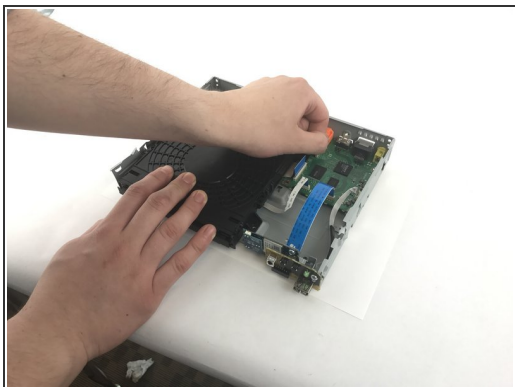
### Step 4



- Once all the clips are open, slide the front outer housing out.



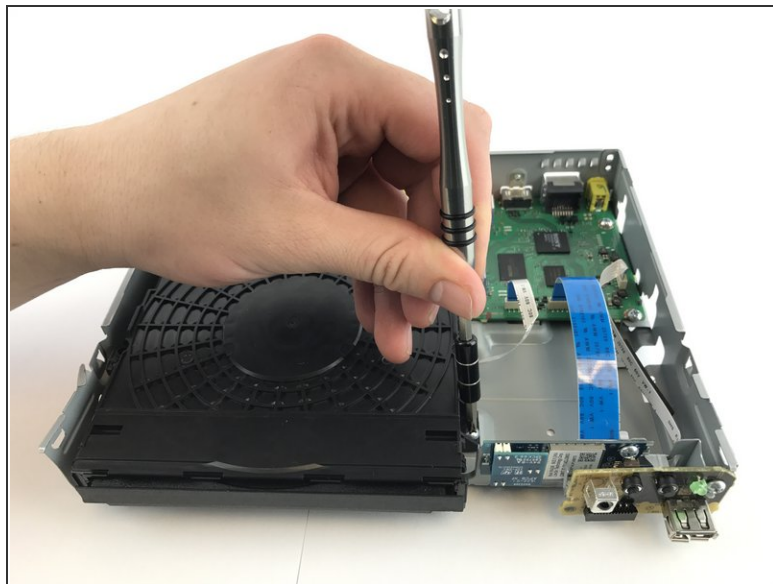
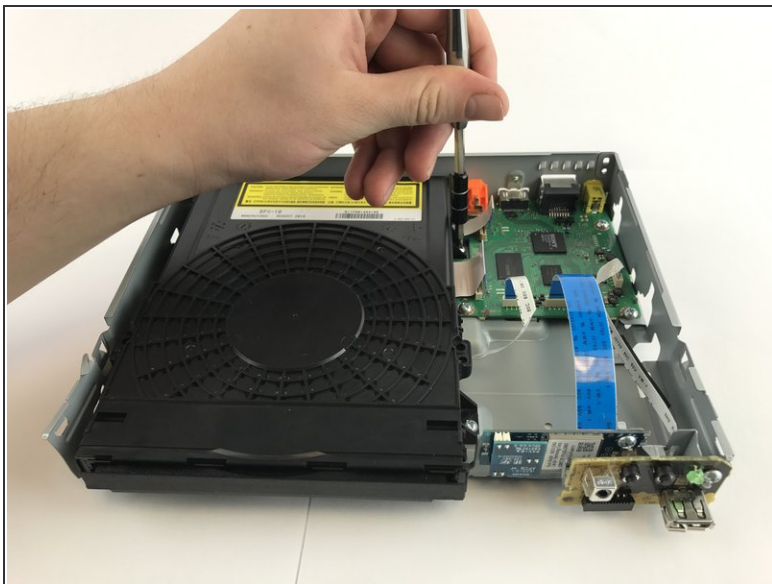
## Step 5 — Disc Drive



- Flip the Blu-ray back up
- Remove the three ribbon cables that connect the disc drive to the motherboard.

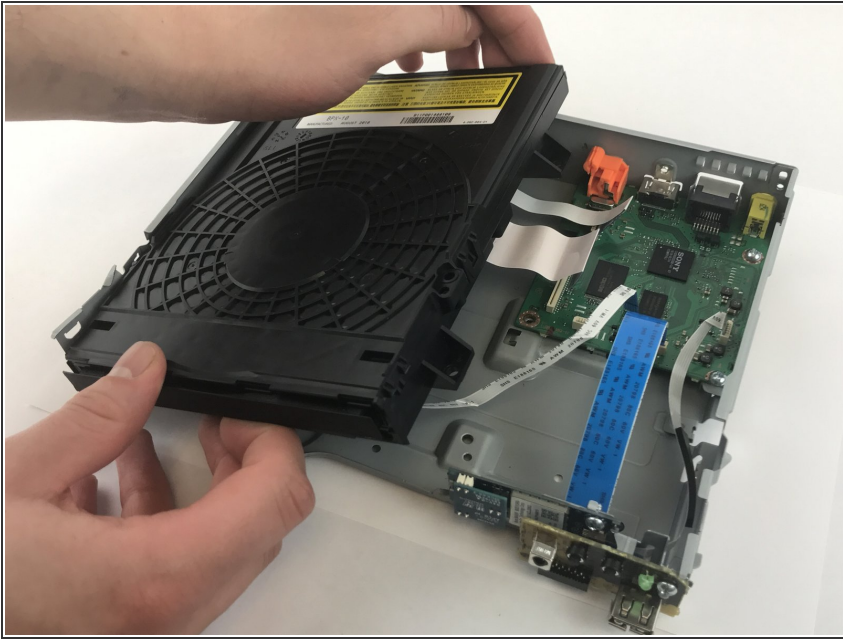
⚠ Handle the circuits only on its side.

## Step 6



- Use a PH1 screwdriver to unscrew both of the 7mm screws on the side of the disc reader.

## Step 7



- Gently slide the disc drive to the right and lift up to remove the disc drive from the body of the player.

To reassemble your device, follow these instructions in reverse order.