



# Sony BDP-S3700 Motherboard Replacement

The motherboard is the brain of the Sony BDP-S3700. This guide shows how to replace a faulty one.

Written By: Luiz Barreto



---

## INTRODUCTION

The motherboard is the brain of the Sony BDP-S3700. This guide shows how to replace a faulty one.

---



### TOOLS:

- [Phillips #1 Screwdriver](#) (1)
-

## Step 1 — Front Panel



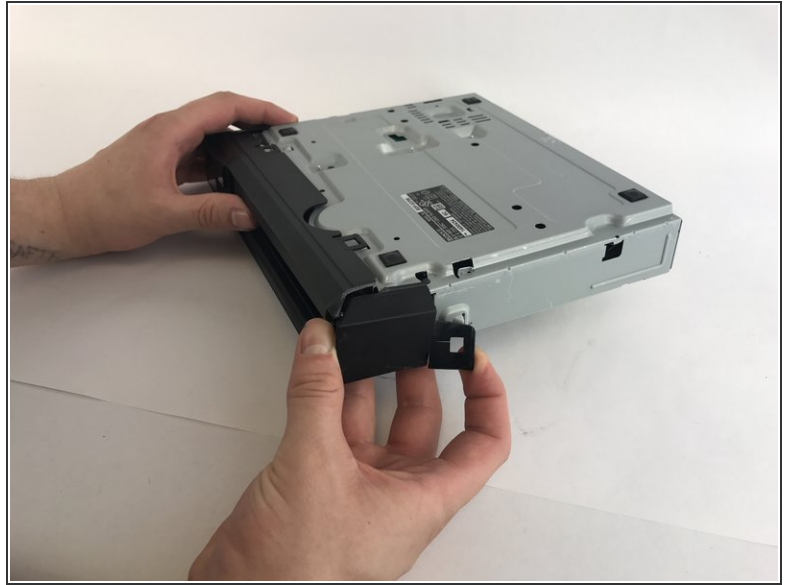
- Use the PH1 screwdriver to remove the two 9mm screws on the back of the Blu-ray player.

## Step 2



- Remove the back of the device by slowly sliding the rear outer housing backwards.

### Step 3



- Turn the Blu-ray over
- Pry open the clips under and on the sides

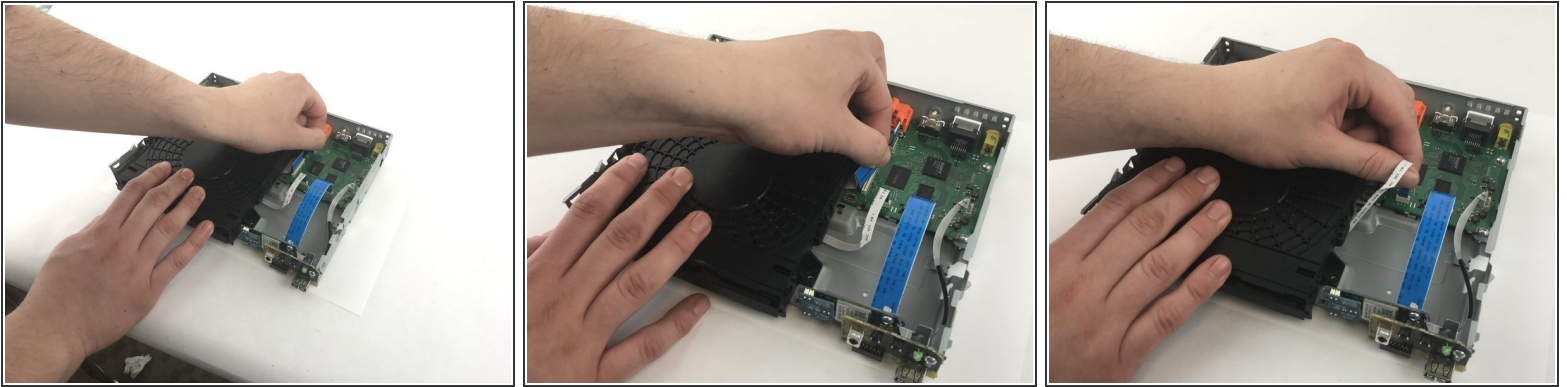
### Step 4



- Once all the clips are open, slide the front outer housing out.



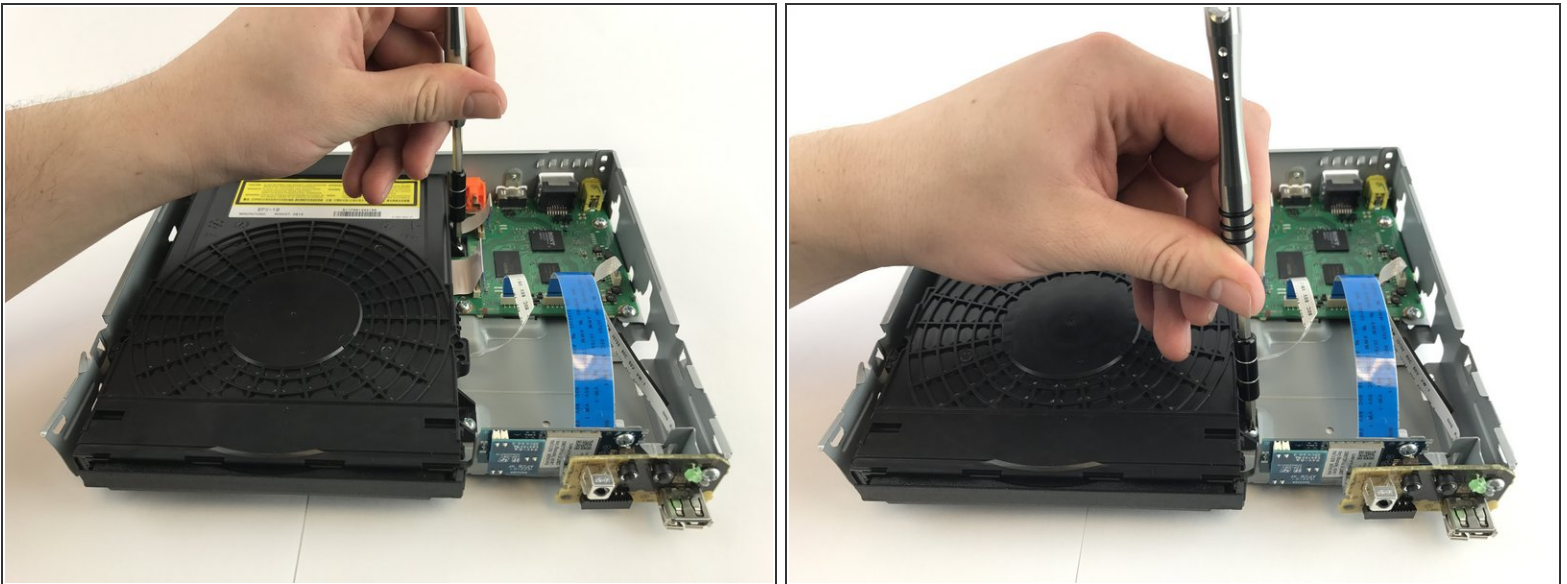
## Step 5 — Disc Drive



- Flip the Blu-ray back up
- Remove the three ribbon cables that connect the disc drive to the motherboard.

⚠ Handle the circuits only on its side.

## Step 6



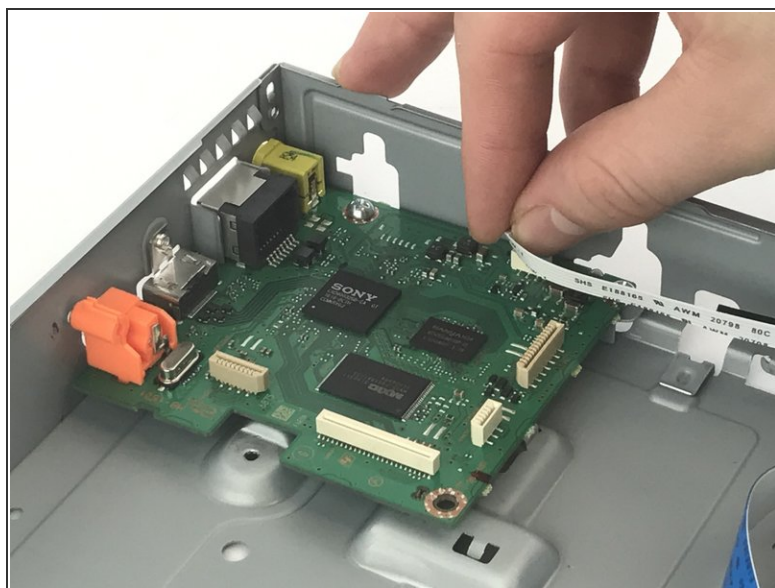
- Use a PH1 screwdriver to unscrew both of the 7mm screws on the side of the disc reader.

## Step 7



- Gently slide the disc drive to the right and lift up to remove the disc drive from the body of the player.

## Step 8 — Motherboard



- Gently pull upwards on the ribbon cables to disconnect the motherboard from the Wi-Fi module and port board.

## Step 9



- Remove the three 7mm screws along the motherboard using a PH1 screwdriver.

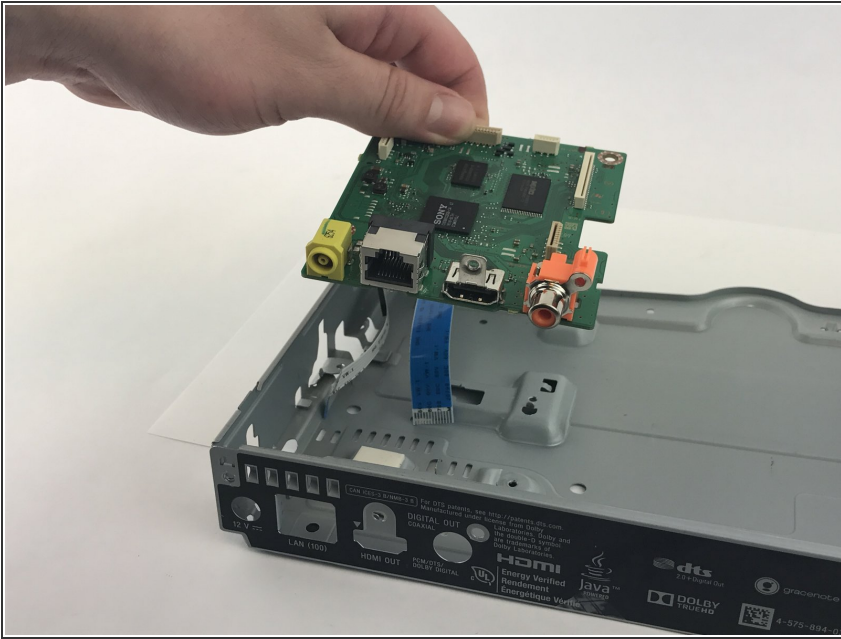
## Step 10



- Remove the 4mm screw above the HDMI port and the 9mm screw Digital Out port.



## Step 11



- Carefully lift and pull the motherboard forward to remove.

To reassemble your device, follow these instructions in reverse order.