



# Sony BDV-NF620 Teardown

This is the teardown on a amp/BD player/media receiver that looks like a PlayStation 3 Super Slim

Written By: Federico Barutto





## TOOLS:

- [Phillips #2 Screwdriver](#) (1)
  - [Phillips #1 Screwdriver](#) (1)
  - [Spudger](#) (1)
  - [Flathead Screwdriver](#) (1)
-

## Step 1 — Top cover screws



- This is it. A Sony BD/CD/DVD player, A/V receiver, amplifier and tuner, all in a PS3 Super Slim-looking device! Will all of these functions make it difficult to repair? Let's see!

⚠ Unplug the device before opening it!

- Remove the seven PH1 screws marked with the circle under the player (they're marked with two half arrows on the device).
- On the back of the device, remove the five PH1 screws marked in yellow (they're the same as the ones in the bottom).



## Step 2 — Top cover clips

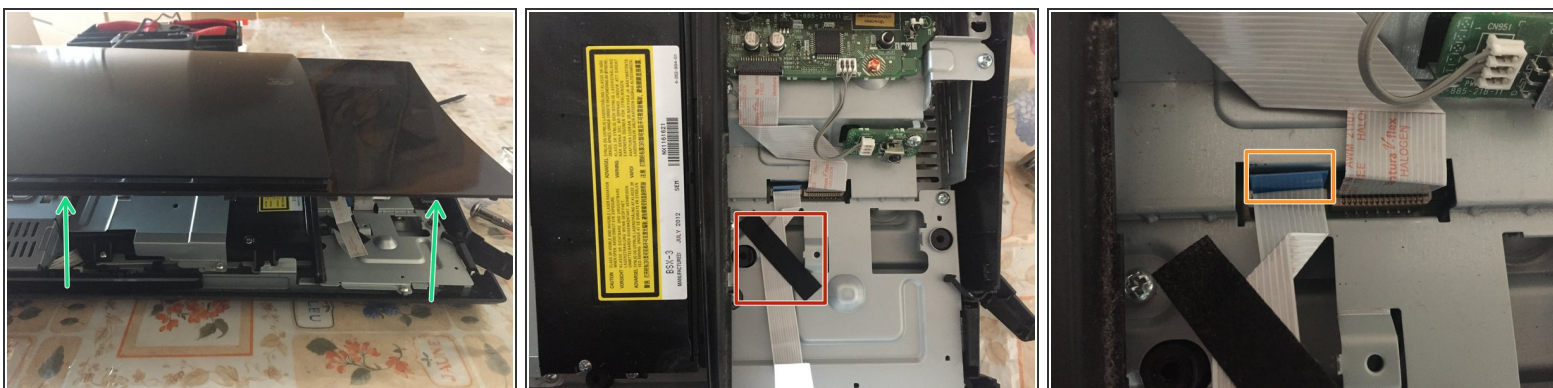


- Insert a spudger (or other thin, plastic tools like that) in the small gap between the base and the top. Rotate it like in the picture and slide it across the side. You'll encounter some resistance where the clips are, it's normal.

⚠ Be careful not to break them!

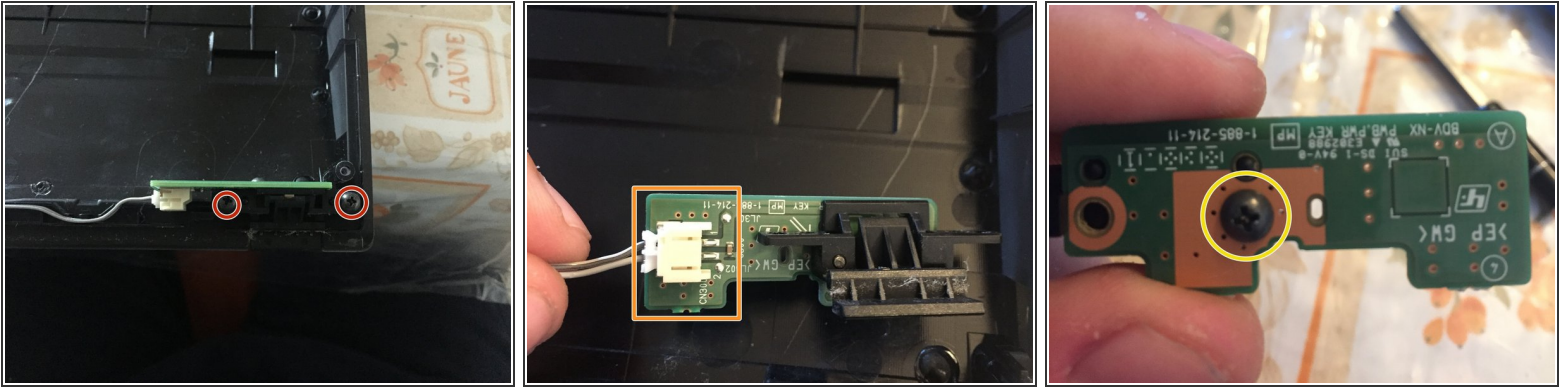
- Do the same for the front...
- ...and for the other side.

## Step 3 — Top cover removal



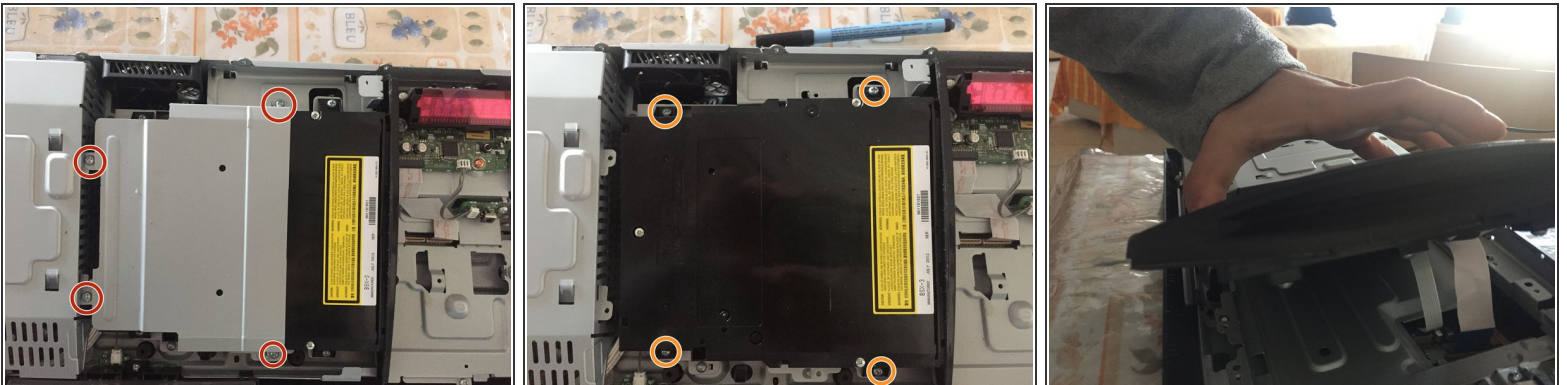
- Lift the top cover about 5 cm (2 in) and place it in front of the device, with the curved side on the table.
- Gently, remove the black felt tape.
- Remove the touch keys's cable.

## Step 4 — Standby button



- Remove the two PH1 screws.
- Remove the cable.
- ⚠ NEVER pull the cable from the wires! Always remove it by grabbing the connector.
- Remove the single PH1 screw and detach the board from the plastic.

## Step 5 — Optical drive



- Now, back to the main device!
- Remove the four PH1 screws and lift the shield out.
- Remove the four PH1 screws (identical to the other four).
- Gently rotate the optical drive 90 degrees.



## Step 6 — Optical drive cables



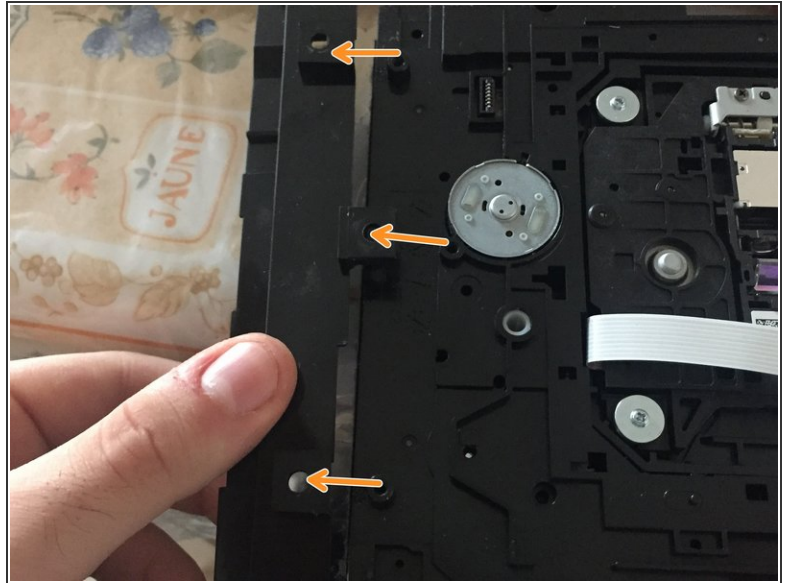
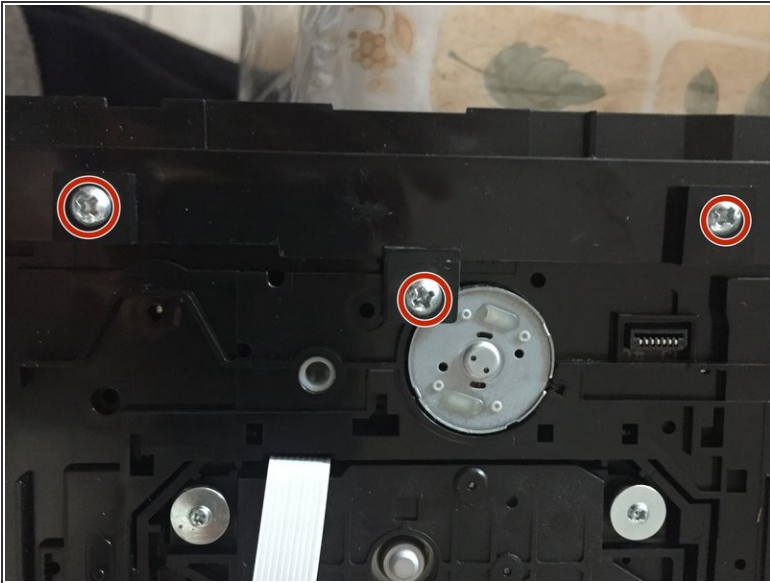
- Remove the three cables.
- Remove the black felt tape
- Insert a flathead screwdriver in the gap between the lower part of the optical drive and the little panel, rotate it and remove the panel.

## Step 7 — Optical drive lower panel



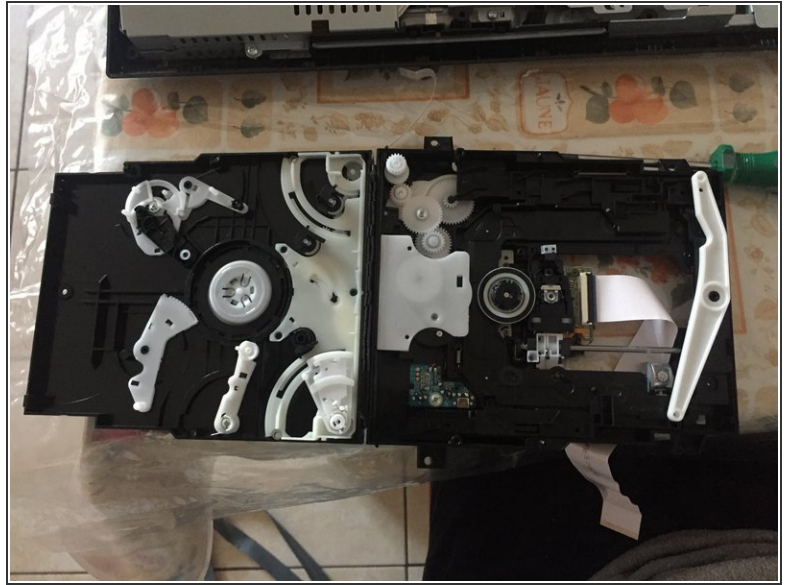
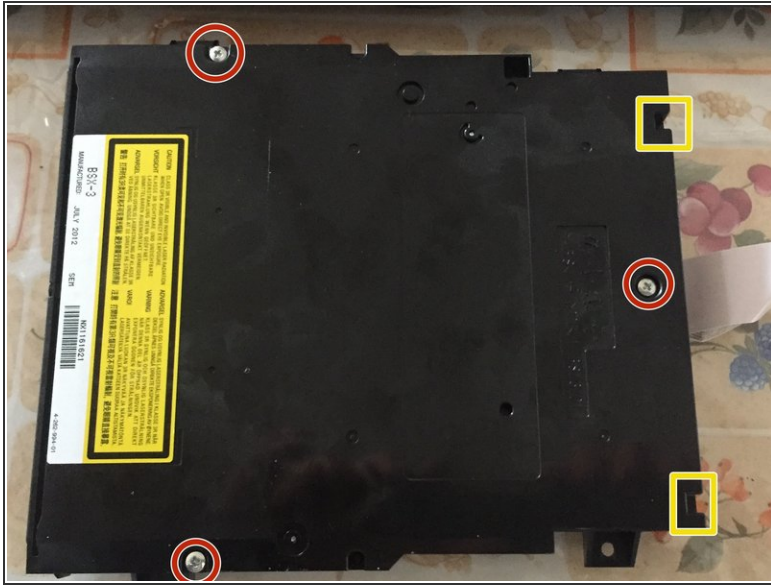
- Gently remove the cables from their plastic support tabs.
- Insert a flathead screwdriver in the hole near the L-shaped part. slightly rotate it downwards and slide the entire bottom of the drive right until it stops.
- Lift the cover while being careful not to break the cables.

## Step 8 — Disc inlet



- Remove the three PH2 screws.
- Slide the inlet to remove it.

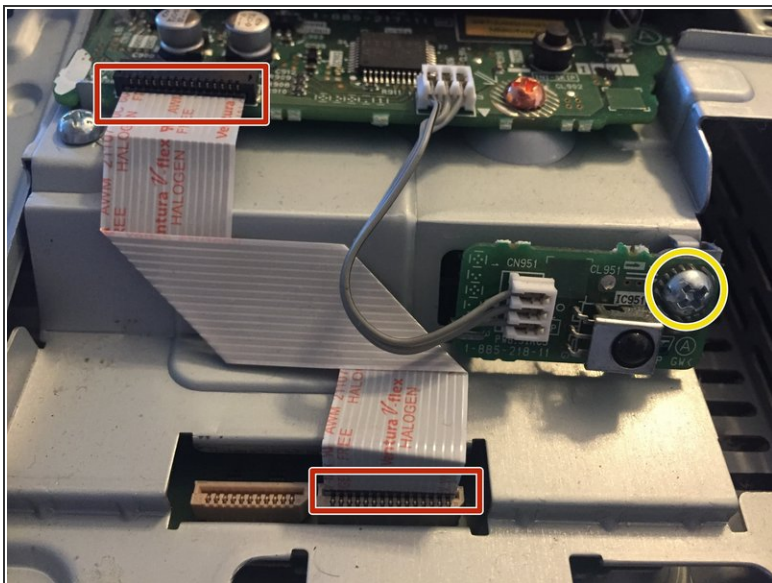
## Step 9 — Top cover



- If you have a stuck disc, this is the step you are looking for!
  - Remove the three PH1 screws.
  - (I forgot to take the photo...) Insert a spudger (or similar) in the gap between the two parts of the drive and slide it along the corners. Around the yellow squares there are two clips which will pop when you slide the spudger.
- ⚠ Rotate the top cover and remove any stuck disc. Be careful not to break any part on the top!

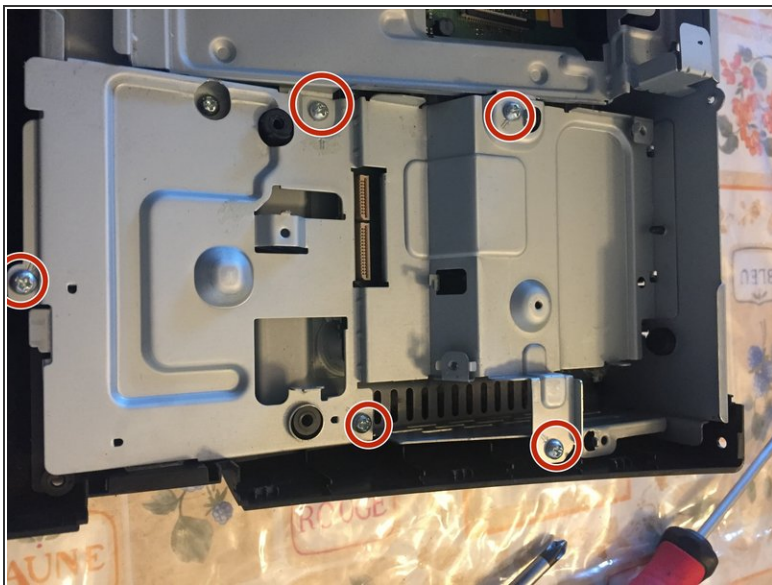


## Step 10 — Display



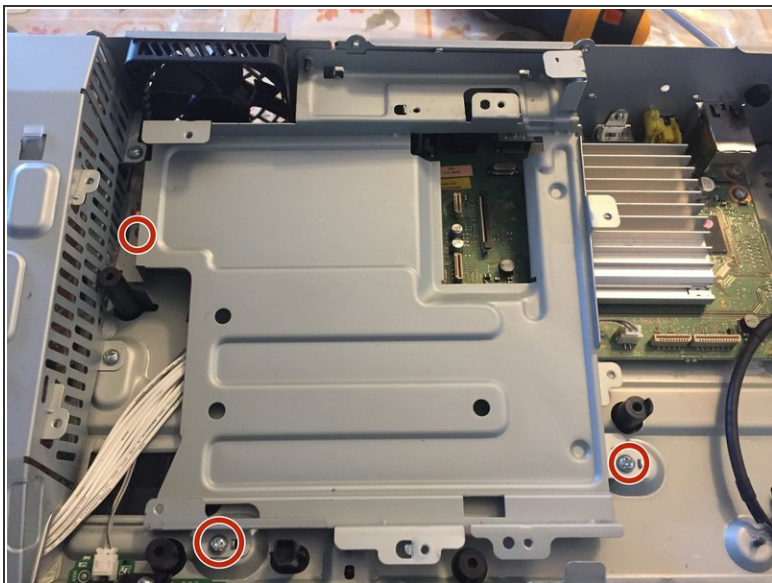
- In the main unit, remove the display cable...
- ...the IR sensor PH2 screw...
- ...and the two PH2 orange screws.
- Lift the display out of the unit.

## Step 11 — First shield



- Remove the five PH2 screws (marked in the shield with double half arrows).
- At the back, remove the single PH2 screw.
- Lift the shield out.

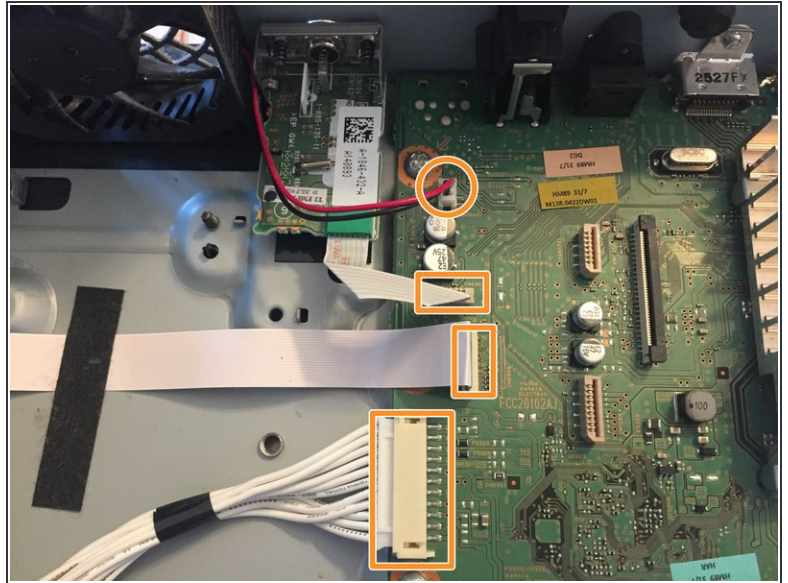
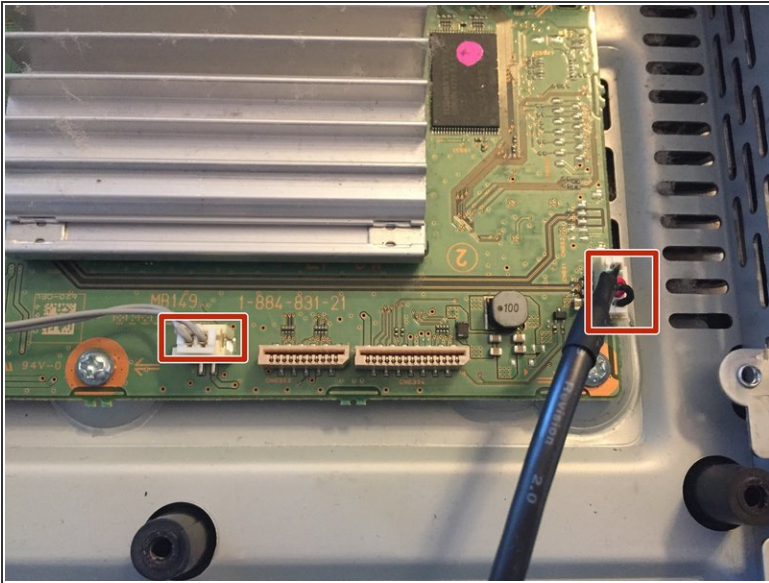
## Step 12 — Second shield



- Remove the three PH2 screws.
- At the back of the device, remove the two PH2 screws.
- Lift the shield out.

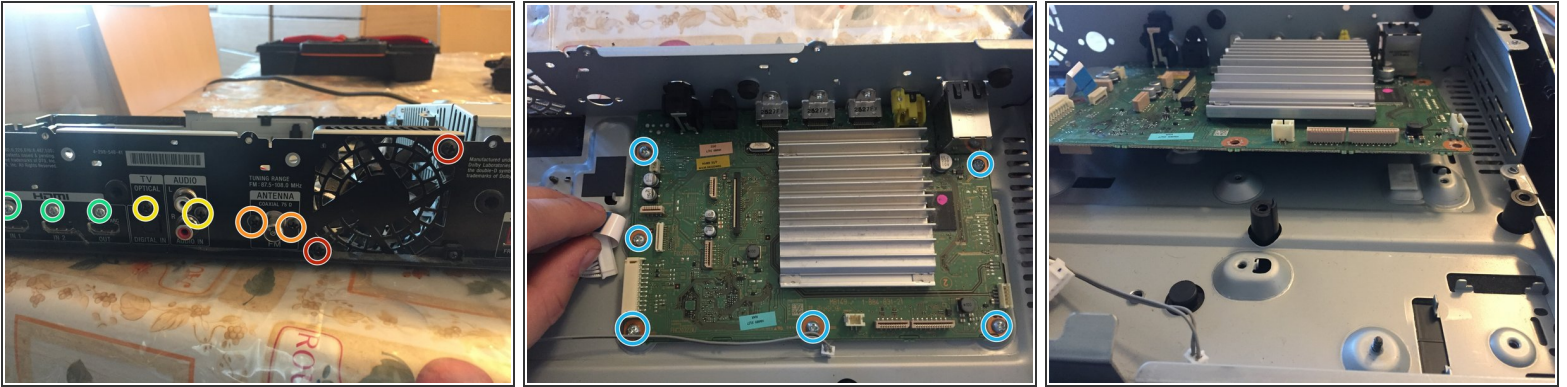


## Step 13 — Logic board



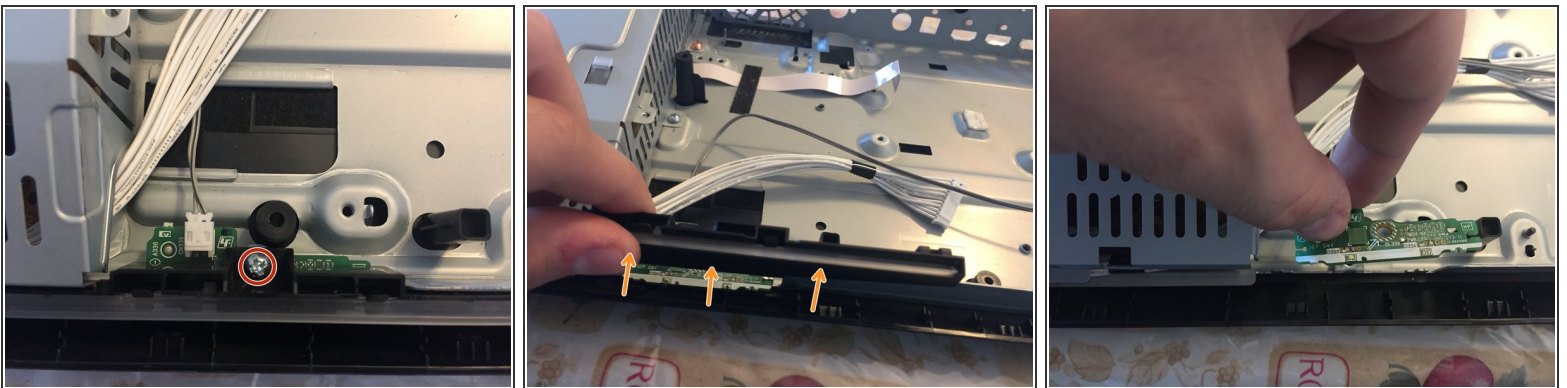
- Remove the LED cable (grey) and side USB (black, fat).
- Remove the fan, antenna, audio and power cables.

## Step 14 — Logic board



- Remove the fan screws and fan...
- ...the antenna connector screws and module...
- ...the audio, optical and (not shown) video screws (all of these are black PH2)...
- ...(silver PH2) HDMI screws....
- ...and finally the six PH2 logic board screws.
- Last but not least rotate the board and slide towards you to remove it.

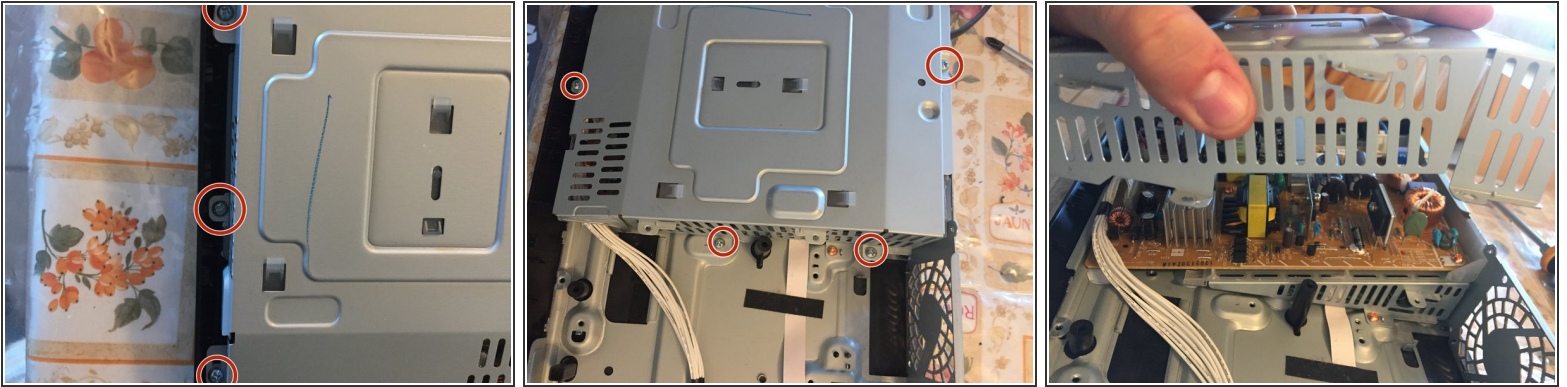
## Step 15 — Front LED



- Remove the single PH2 screw holding the light guide.
- Lift and remove the light guide.
- Remove the LED board.

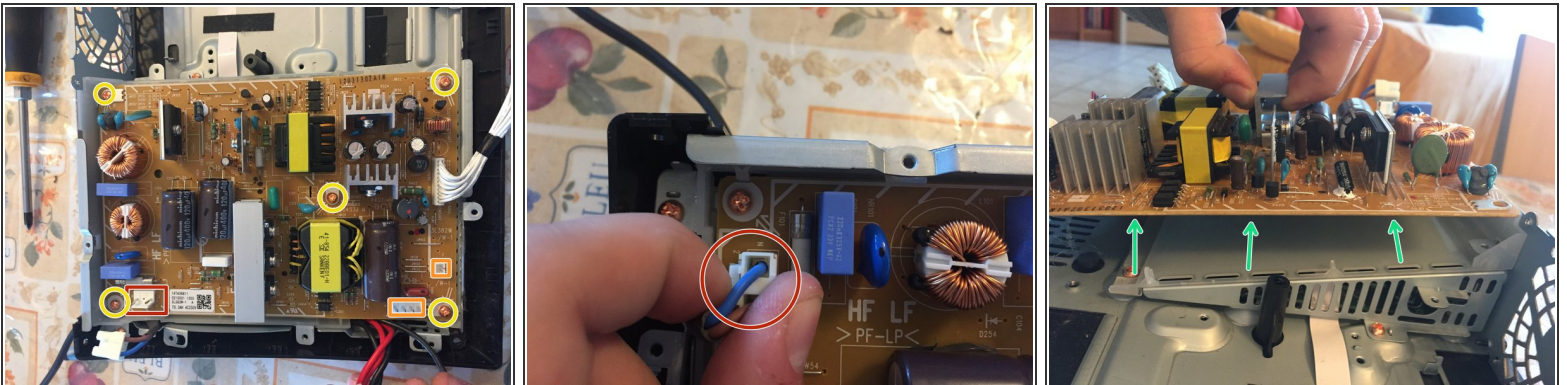


## Step 16 — PSU Shield



- Remove the three PH2 screws on the shield.
- Remove the shield by lifting it.

## Step 17 — Power supply nit



⚠ Be careful: the big capacitors may still hold a little charge! Don't touch their leads!!!!

- Remove the mains connector by pressing the little lever on it...
- ...then the other two connectors...
- And the five orange PH2 screws.
- Grab the power supply unit by the central heat sink and lift it to remove.



## Step 18 — Audio board shield



- Remove the four orange PH2 screws.
- At the back, remove the two upper PH2 screws.
- Rotate the lower edge of the shield and pull it towards you to remove it.

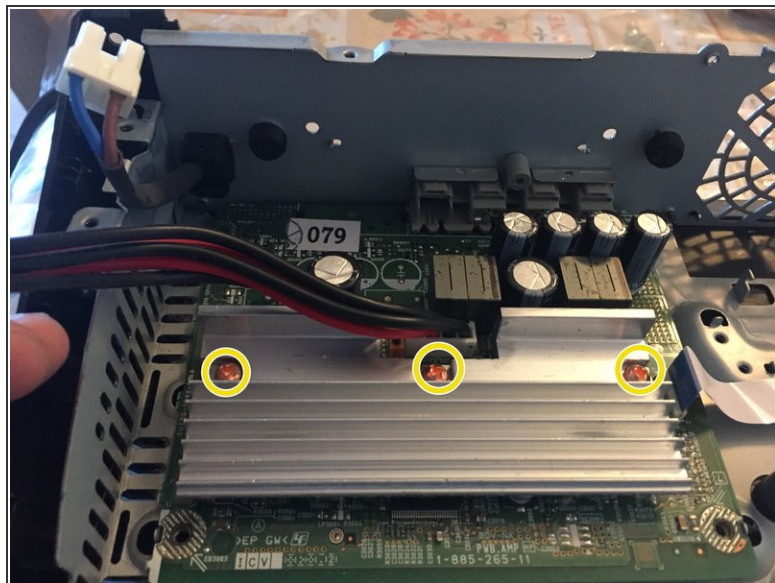
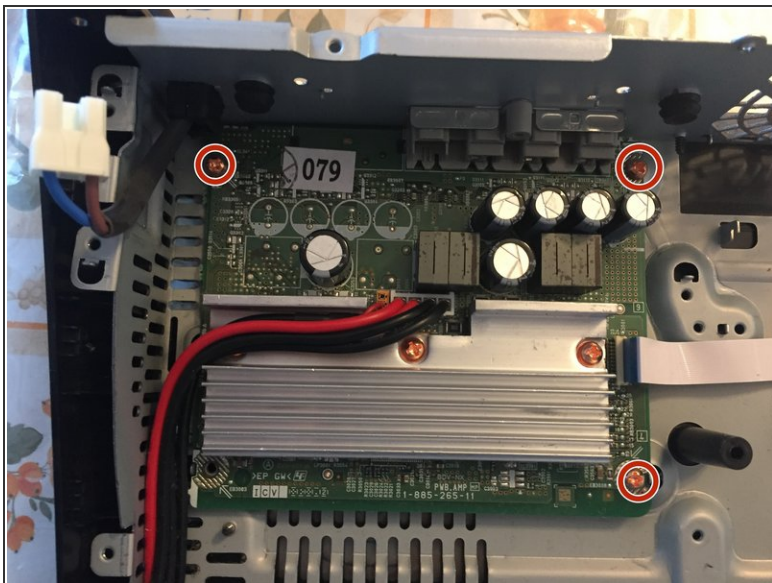
⚠ When you reassemble it, pay attention to the plastic over it, as it can move and not protect the base of the power supply.

## Step 19 — Audio board



- Remove the black felt tape.
- At the back, remove the single black PH2 screw over the speakers connectors.
- Remove the bottom-left screw with wire-holder.

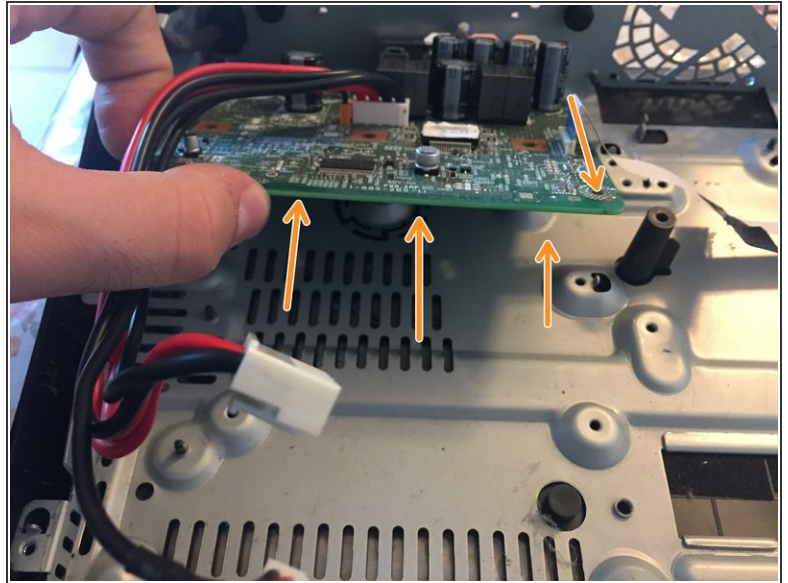
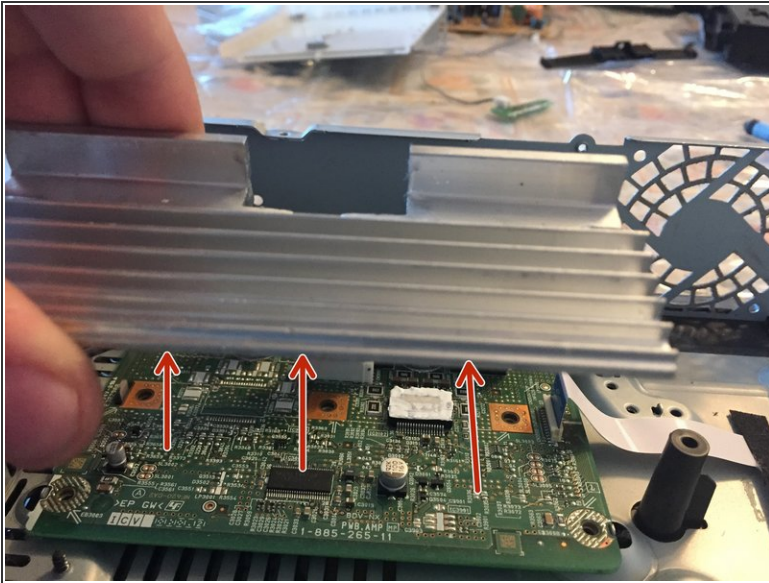
## Step 20 — Audio board



- Remove the three orange screws at the corners of the board.
- Lift the black and red wires and remove the three orange PH2 screws (they're the longest screws in the device)



## Step 21 — Audio board



- Lift the heat sink...
- Then rotate and pull towards you the audio board.

## Step 22 — Metal frame



- Remove the three remaining screws on the lower plastic of the device.



## Step 23 — Metal frame



- Rotate and lift the frame to remove it.
- Congratulations, you've torn down the entire device!

## Step 24

### REPAIRABILITY SCORE:



⚠ Thanks to iFixit for the 10/10 image.

- I think that this device deserves a 10-/10, because everything is easily removable, there are only five types of screws (and three different sizes) and the cables aren't glued but there's the foam tape holding them.
- I gave the minus to the score because the IR receiver hasn't a connector but it's soldered and because the touch "keys" are glued onto the upper cover.