



Sony Betamovie BMC-220 Power Button Replacement

This guide describes how to remove the power button from the Sony Betamovie BMC-220.

Written By: Jordan Bates



INTRODUCTION

Is your camcorder failing to turn on? Consider using this guide to replace the power button of your device.



TOOLS:

- [Phillips #0 Screwdriver](#) (1)
 - [Phillips #1 Screwdriver](#) (1)
-

Step 1 — Battery



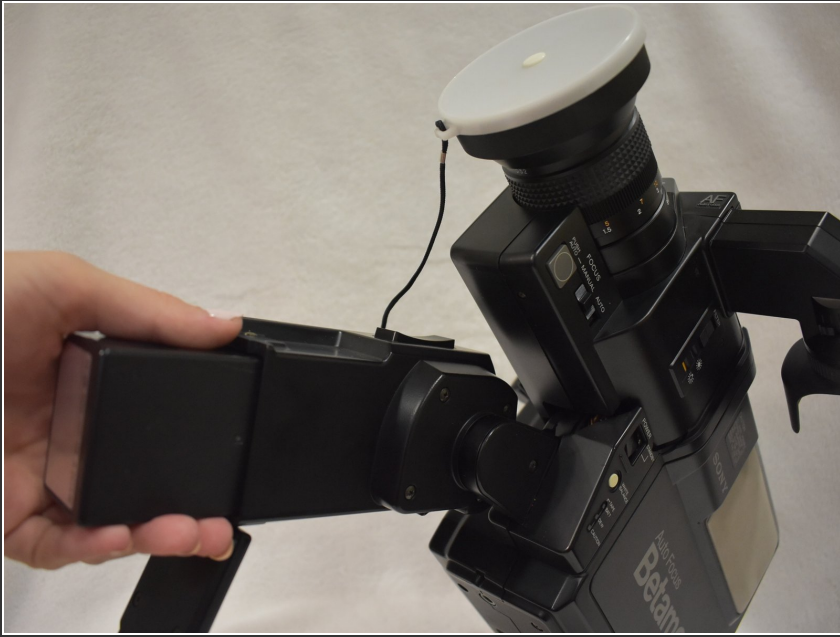
- Orient your Betamovie so that the back of the device is sitting flat, and the bottom of the device is facing you.
- Slide the RELEASE switch up to bring the hand grip down.

Step 2



- Turn the BATTERY knob to OPEN, and open the lid.
- Reminder: When inserting a new battery, make sure the knob is turned to OPEN.
- Be careful not to point the hand grip down when turning the BATTERY knob. The battery pack may fall out.

Step 3



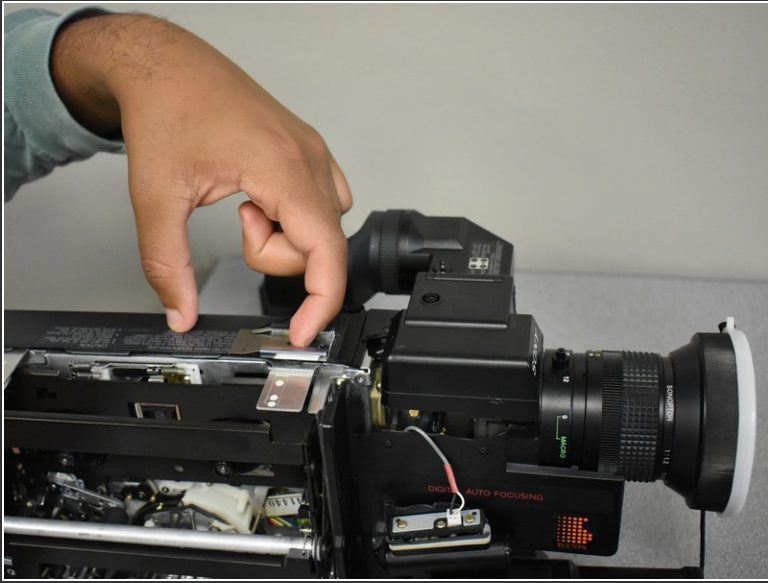
- Remove the battery from the Betamovie.

Step 4 — Power Button



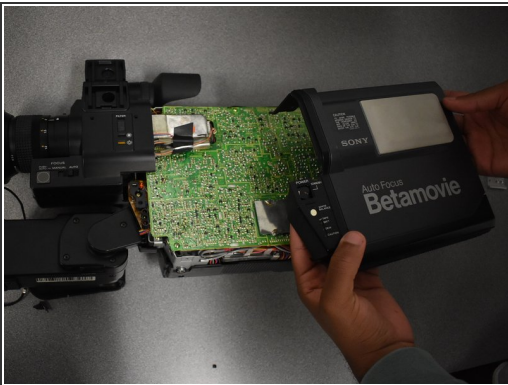
- Remove the two screws (2mm x 6mm) on either side of the FILTER switch on the black and white side of the Betamovie using the Phillips #0 screwdriver.
- Remove the two screws on the bottom of the camera on the side with the black and white face using the same screwdriver.
- Remove the screws on the bottom of the back of the camera with the same screwdriver.

Step 5



- Remove the silver rectangular piece at the top of the Betamovie using your hands.
- Remove the two screws (2mm x 6mm) under the flat silver piece using the Phillips #1 screwdriver. The silver metal clip comes off once the screws are removed.

Step 6



- Remove the black and white cover from the Betamovie.
- Remove the power button from the black and white face.

To reassemble your device, follow these instructions in reverse order.