



Sony Bloggie 3D Player On/Off Buttons Replacement

On/Off buttons wear out after constant use. This guide will help you replace these buttons and get your device functioning once more.

Written By: Fred Saucedo



INTRODUCTION

We turn our devices on and off every single day, and as such, the buttons wear over time. This repair guide will focus on replacing the electrical components controlling the On/Off buttons.

TOOLS:

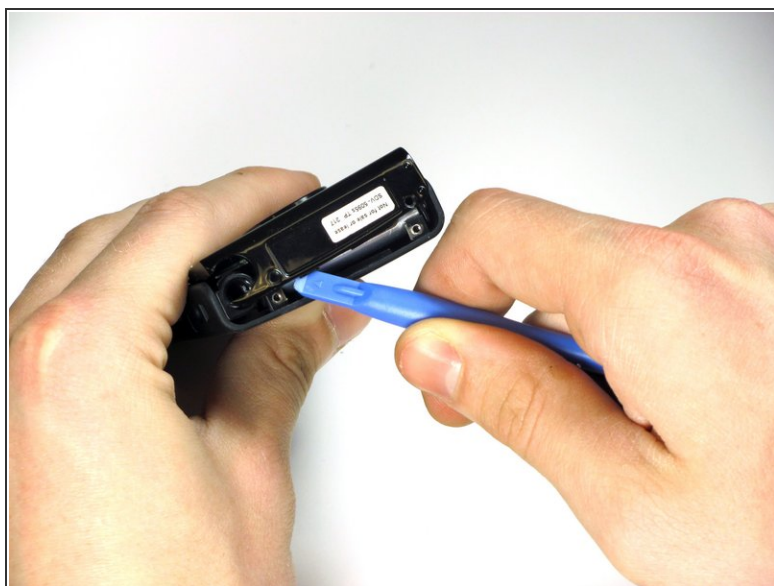
- [Phillips #00 Screwdriver](#) (1)
 - [iFixit Opening Tools](#) (1)
 - [Spudger](#) (1)
 - [Tweezers](#) (1)
-

Step 1 — Front Cover



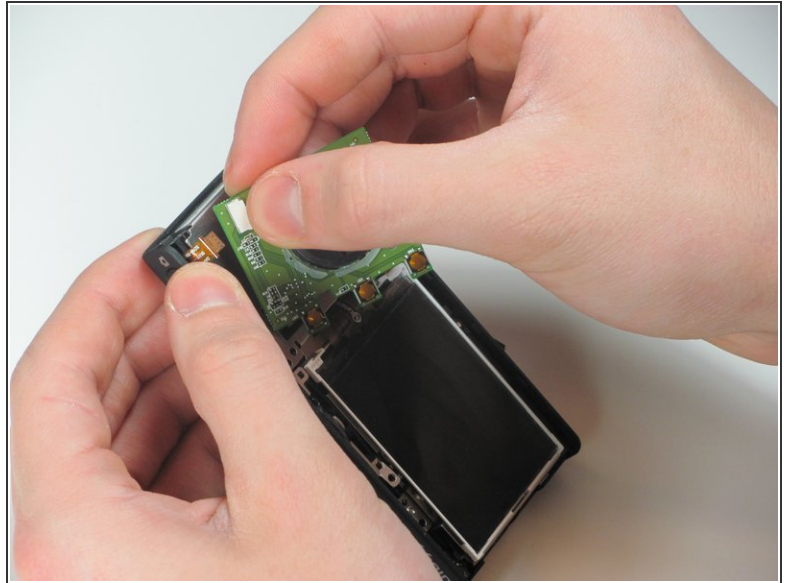
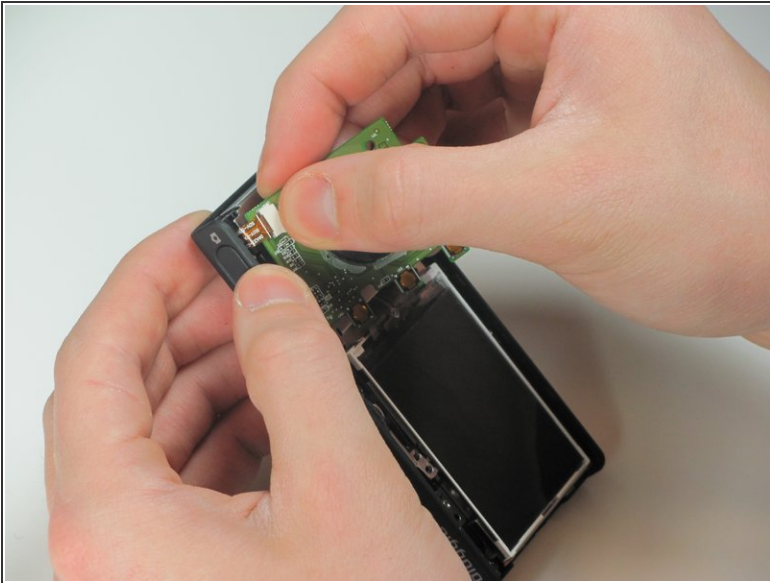
- Remove the two 2.5mm Phillips #00 screws using the Philips #00 screwdriver.

Step 2



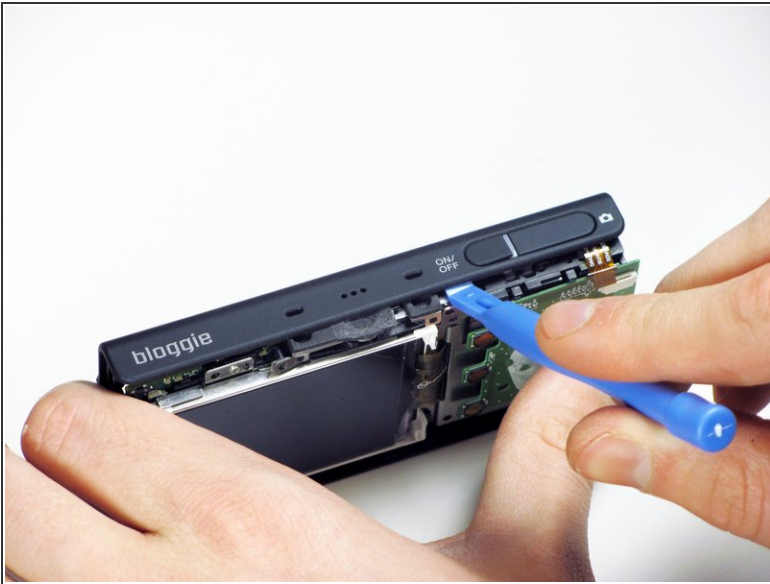
- Use a plastic opening tool to pry the cover open.
- After the the cover is partly open as shown, remove the cover with your hands.

Step 3 — Back Cover



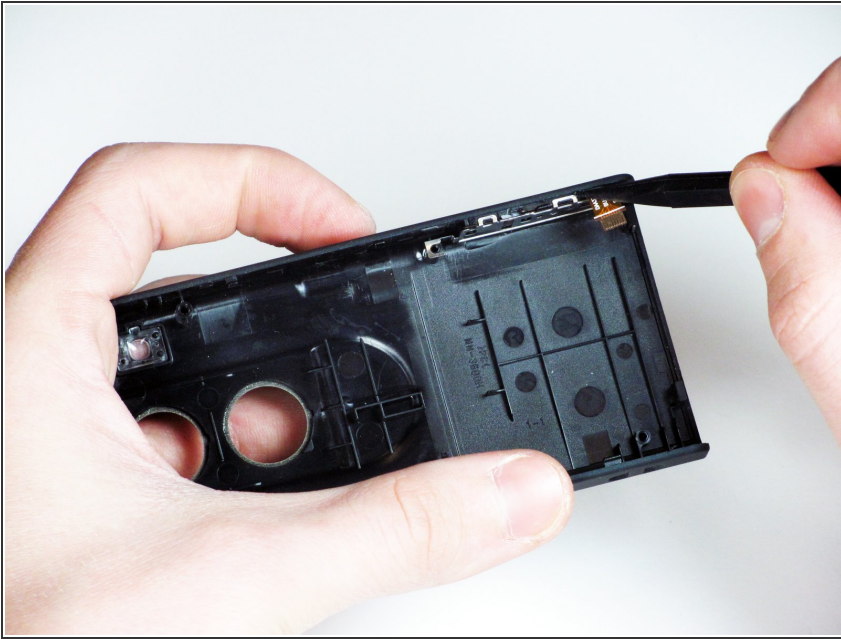
- Using your hand, or a pair of tweezers, remove the ZIF connector by gently pulling it out of the dock on the circuit board.

Step 4



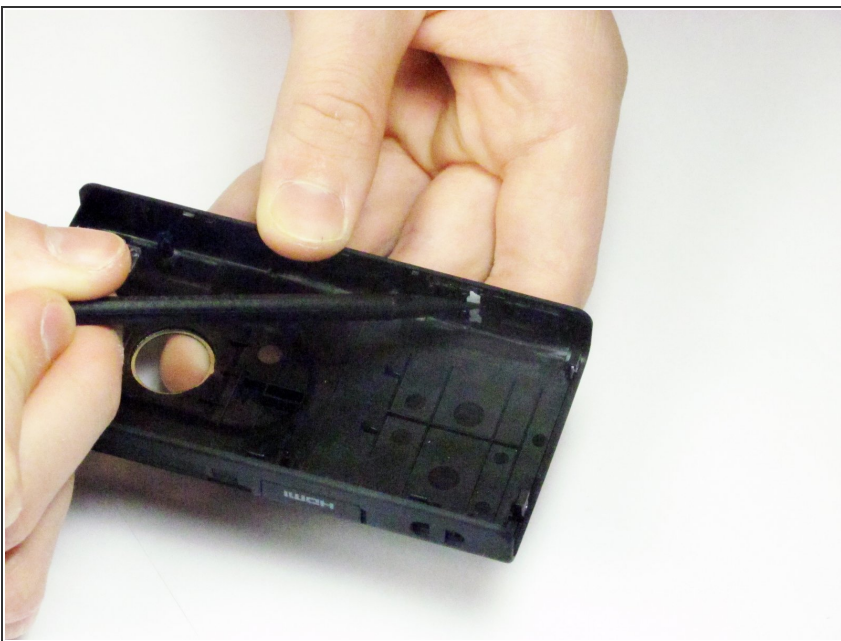
- Use a plastic opening tool to loosen the back cover off the device.
- Once the back cover is loose, remove it gently by hand.

Step 5 — On/Off Buttons



- Using a spudger, carefully remove the metal casing that is attached to the ZIF connector.

Step 6



- Unclip the two plastic buttons with the spudger tool.
- ⚠ The buttons each have a spring under them that will fall off, be careful not to lose them.

To reassemble your device, follow these instructions in reverse order.