



Sony CCD-TR81 Lens Assembly Replacement

This guide will show how to access and install the lens assembly by removing all of the surrounding components of the video camera.

Written By: Andrew



INTRODUCTION

If the lens of the video camera cracks or becomes cloudy, replacing it can be costly and confusing. This guide shows how you can access the lens assembly on your own to make a quick replacement. To get to the lens assembly, you will need to have already removed the battery and the outer casing.

TOOLS:

- [Tweezers](#) (1)
 - [Phillips #0 Screwdriver](#) (1)
 - [Phillips #00 Screwdriver](#) (1)
 - [Phillips #000 Screwdriver](#) (1)
 - [Phillips #1 Screwdriver](#) (1)
 - [iFixit Opening Tools](#) (1)
-

Step 1 — Disassembling Sony CCD-TR81 Battery



- Lift viewfinder to access battery pack.

Step 2



- Press the battery release button.
- While pushing the battery button, slide the battery to the left.

Step 3



- Pull the battery pack out of the video camera.

Step 4 — Outer Case



- Open the cassette cover.
- Unscrew 14 screws located on the outer casing. Three are located on the top face 2x6.8mm and 1x4.54mm, three on the left face 1x4.54mm, 1x5.3mm and seven on the bottom face 5x4.54mm and 2x6.77mm.

Step 5



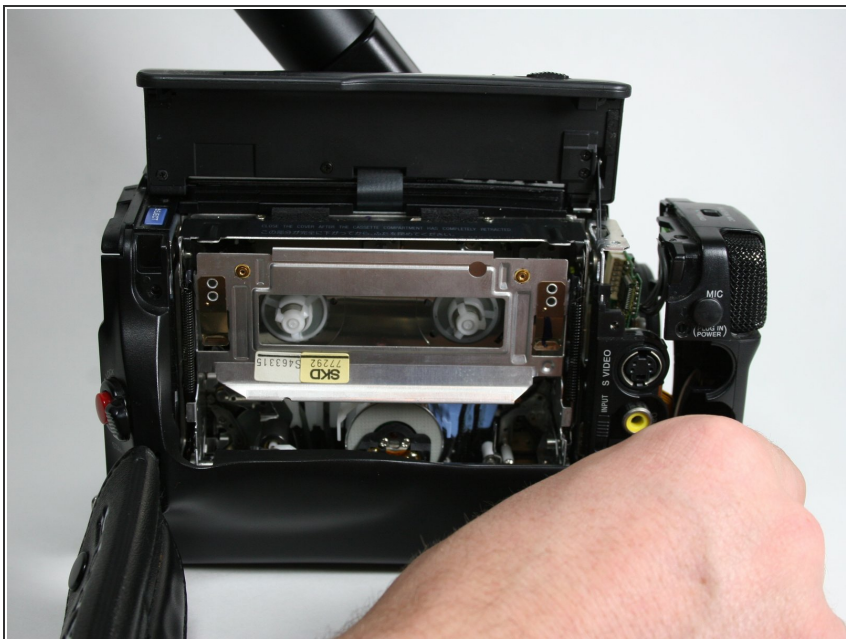
- Continue removing screws. Five on the right side, from bottom to top, 3x4.54mm 2x5.70mm. One on the backside 1x4.54mm.

Step 6



- Pull off the plastic tape cover by lifting it up and out of the camera base.

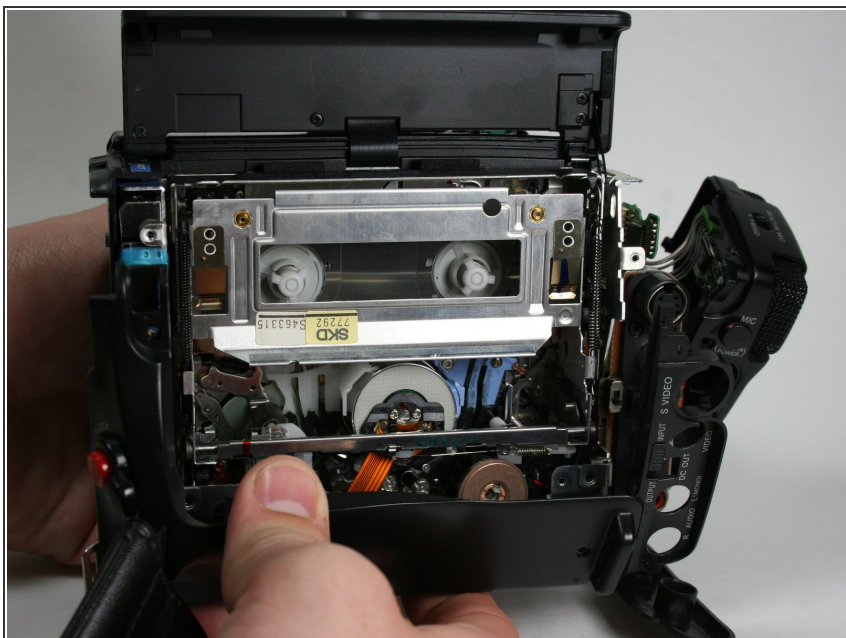
Step 7



- Disconnect the mic assembly by pulling it away from the camera base.

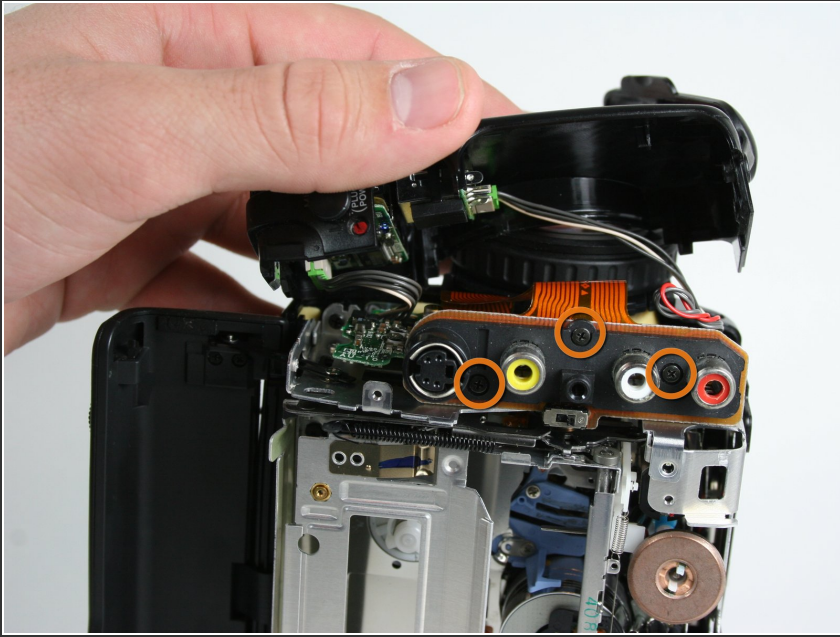
⚠ Do not pull too hard as the wires are still connected.

Step 8



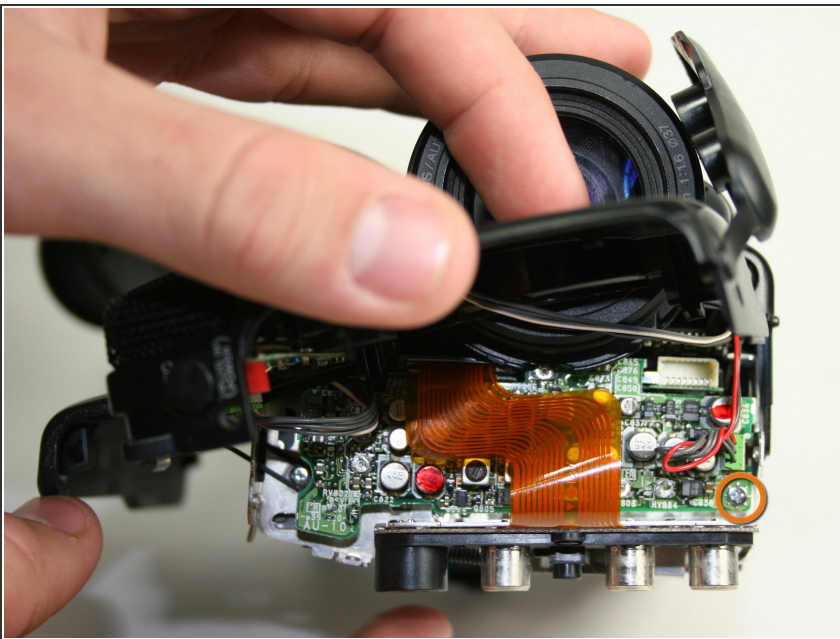
- Pull the bottom part of the case away from the camera.

Step 9



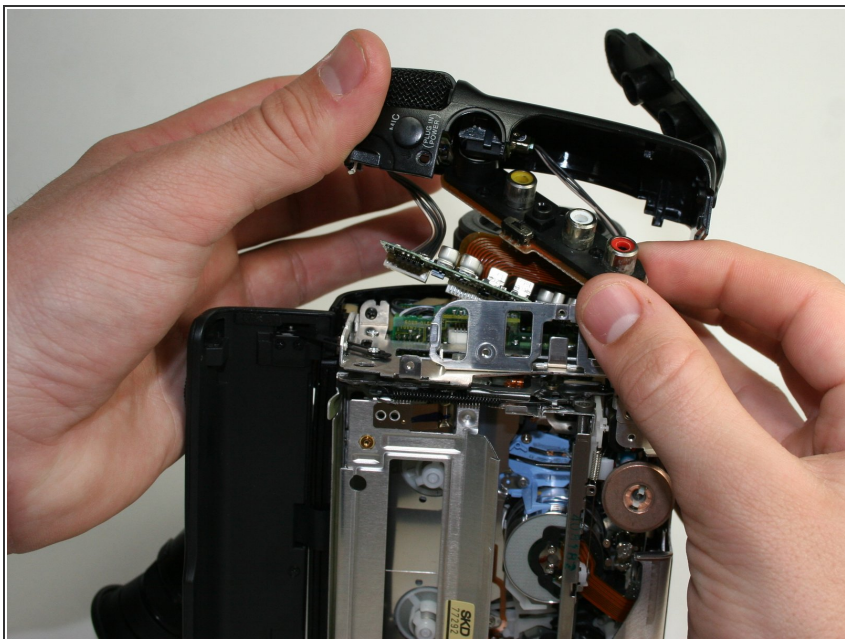
- Remove the three marked screws located on the right face of the video camera 3x4.54mm.

Step 10



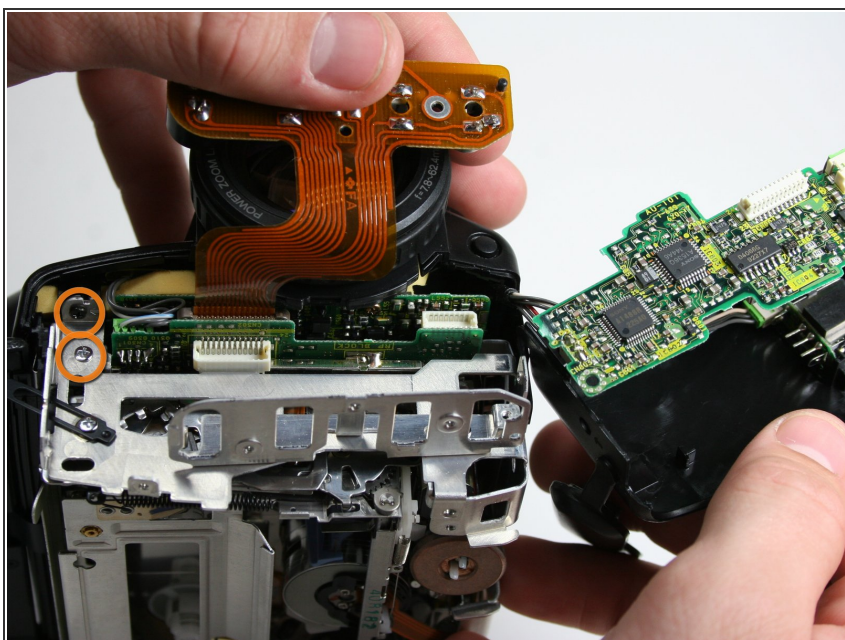
- Remove the one circuit board screw at the front of the video camera 1x3.6mm.

Step 11



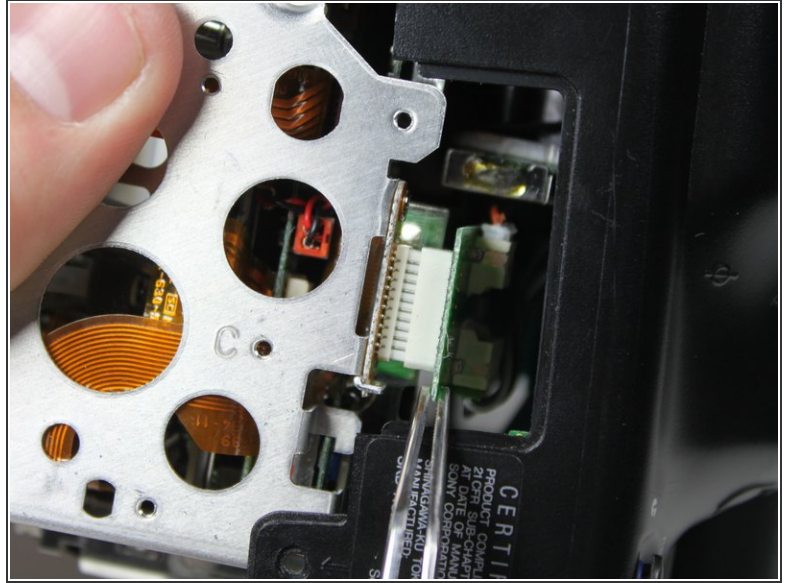
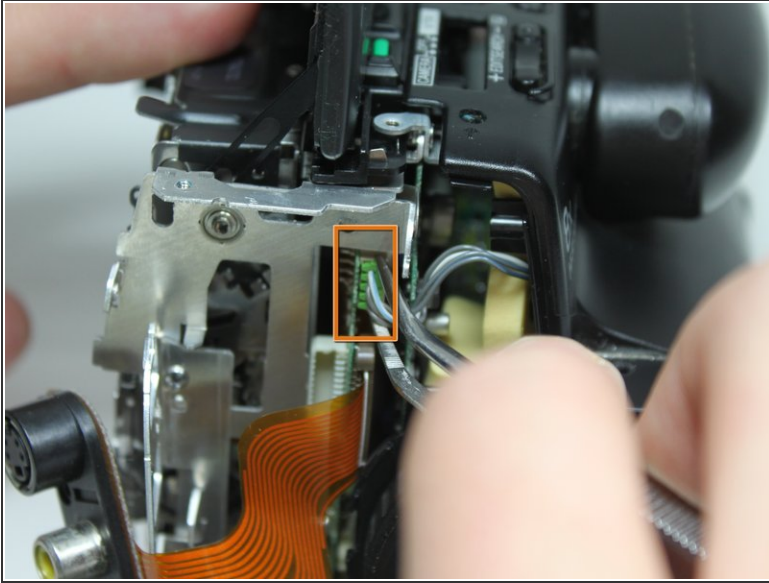
- Pull the audio/video inputs underneath the microphone assembly. The inputs should still be connected to the circuit board.

Step 12



- Remove two remaining case screws on the front of the camera 2x3.63mm.

Step 13



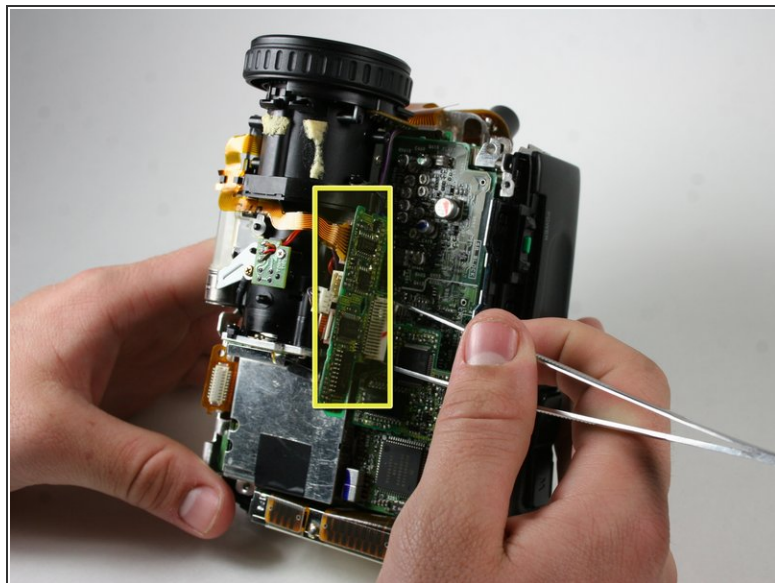
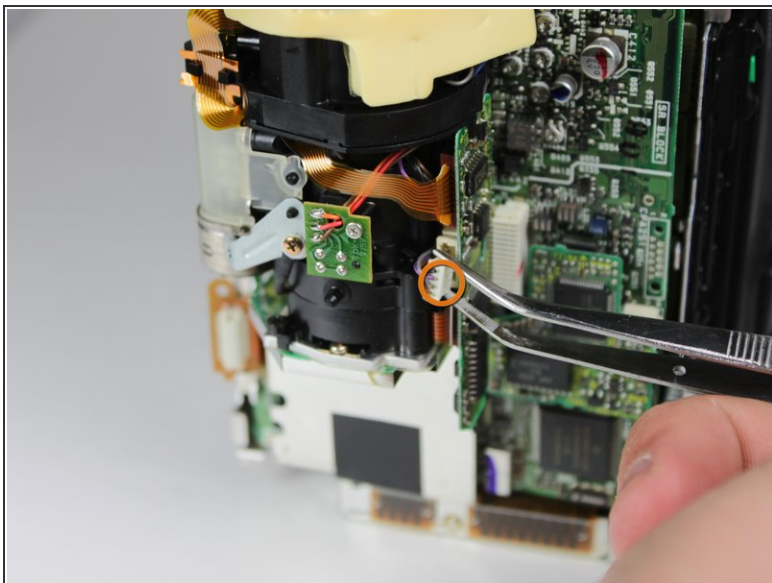
- Using metal tweezers, pull out the plastic connector box on the front side.
- Again use metal tweezers to pull out the connection box on the bottom of the camera. The right side of the case can now be removed by pulling it to the right.

Step 14 — Lens Assembly



- Remove three screws from the circuit board on the left side of the video camera 3x3.6mm.

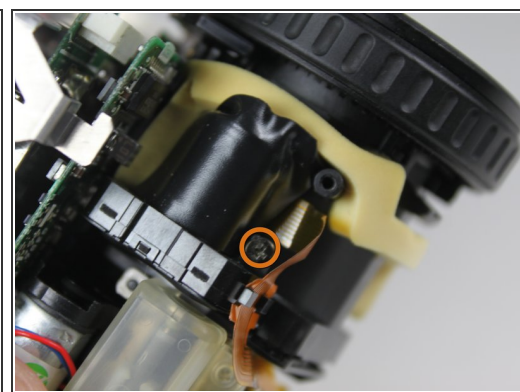
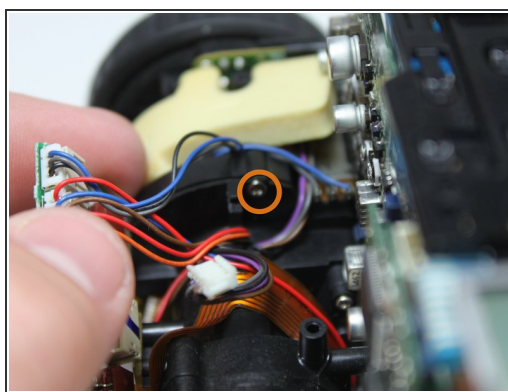
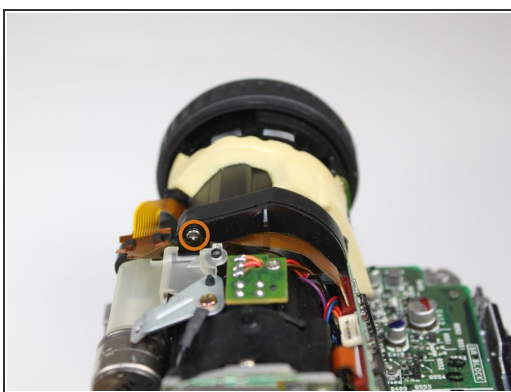
Step 15



- Using metal tweezers, pull out the plastic connector box.

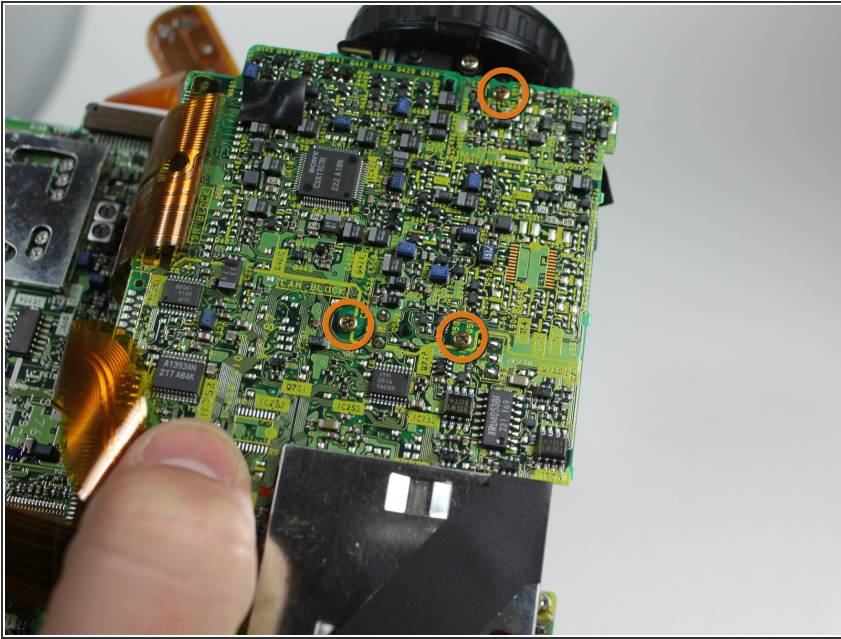
⚠ Pull up the circuit board. Be careful, it should still be connected to a band wire.

Step 16



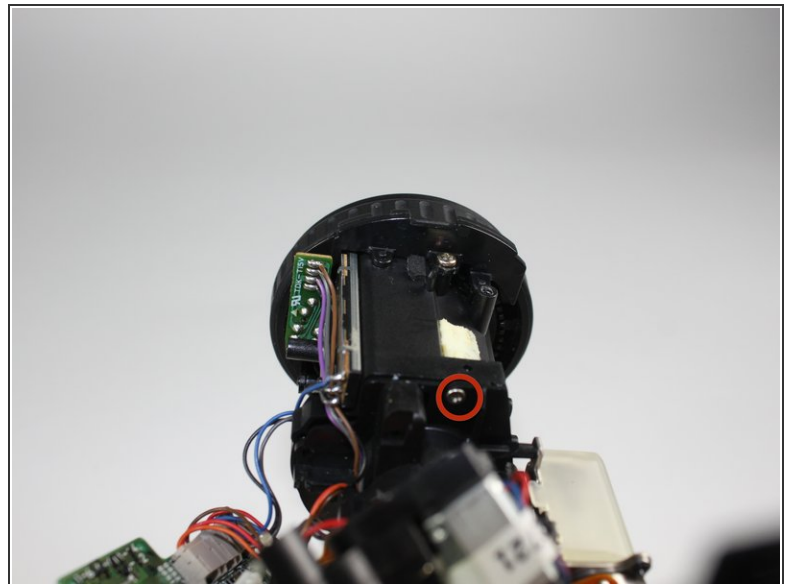
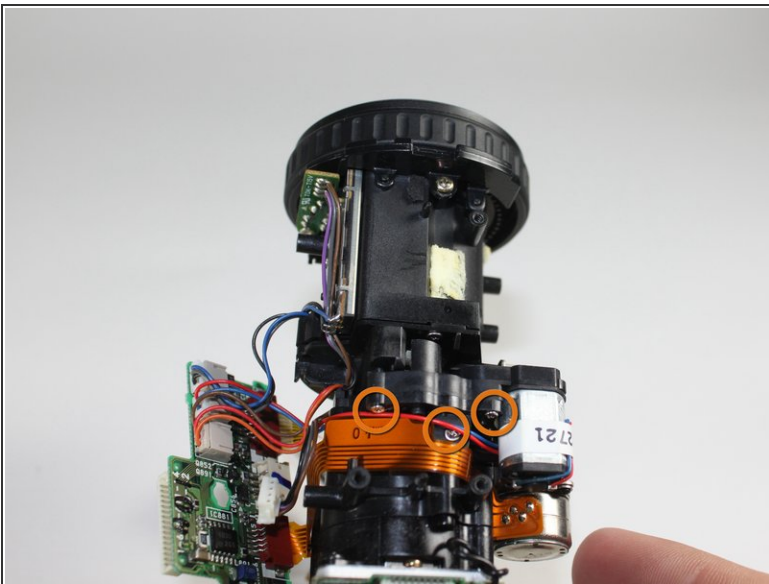
- Remove three 2x4.45mm 1x5.36mm screws around lens assembly.

Step 17



- Remove three screws from the bottom part of the lens assembly 2x6.00mm and 1x5.46mm. Be careful not to break band wires. The bottom two are gold screws.

Step 18

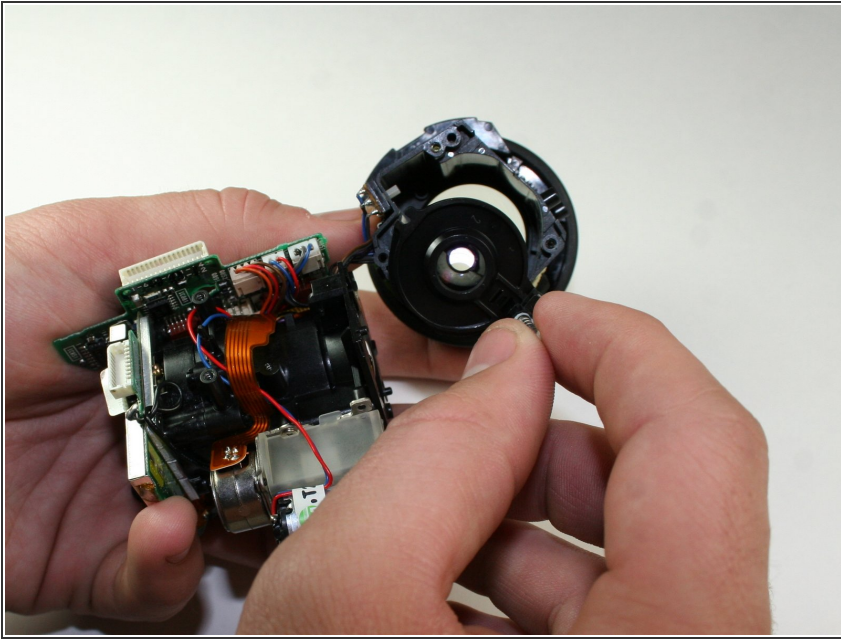


⚠ Lift lens assembly off large circuit board.

- Unscrew three top screws 2x5.31mm and 1x6.07mm.
- Unscrew last remaining screw with Phillips #000 screwdriver 1x6.06mm. Lens should detach from lens assembly.

This document was generated on 2019-09-28 07:33:00 PM (MST).

Step 19



- Once lens has been removed from lens assembly, replacement or repair is possible.

To reassemble your device, follow these instructions in reverse order.