



Sony CD Walkman D-NF430 Teardown

Written By: reuse2009



INTRODUCTION

I am first of all doing this to enter to win a PS3 Slim or PSP Go. I am also doing this to find out what's inside this CD player.



TOOLS:

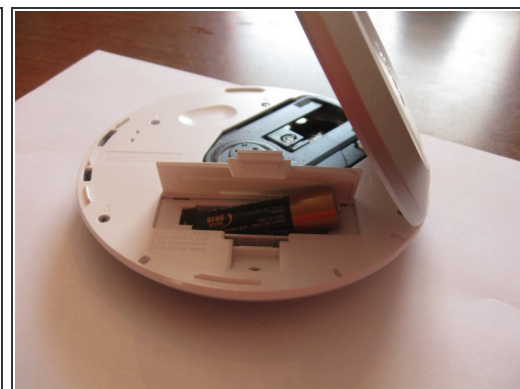
- [a magnet](#) (1)
 - [Phillips #00 Screwdriver](#) (1)
 - [Flathead 3/32" or 2.5 mm Screwdriver](#) (1)
-

Step 1 — Sony CD Walkman D-NF430 Teardown



- Start by looking at the fine detail of the exterior.

Step 2



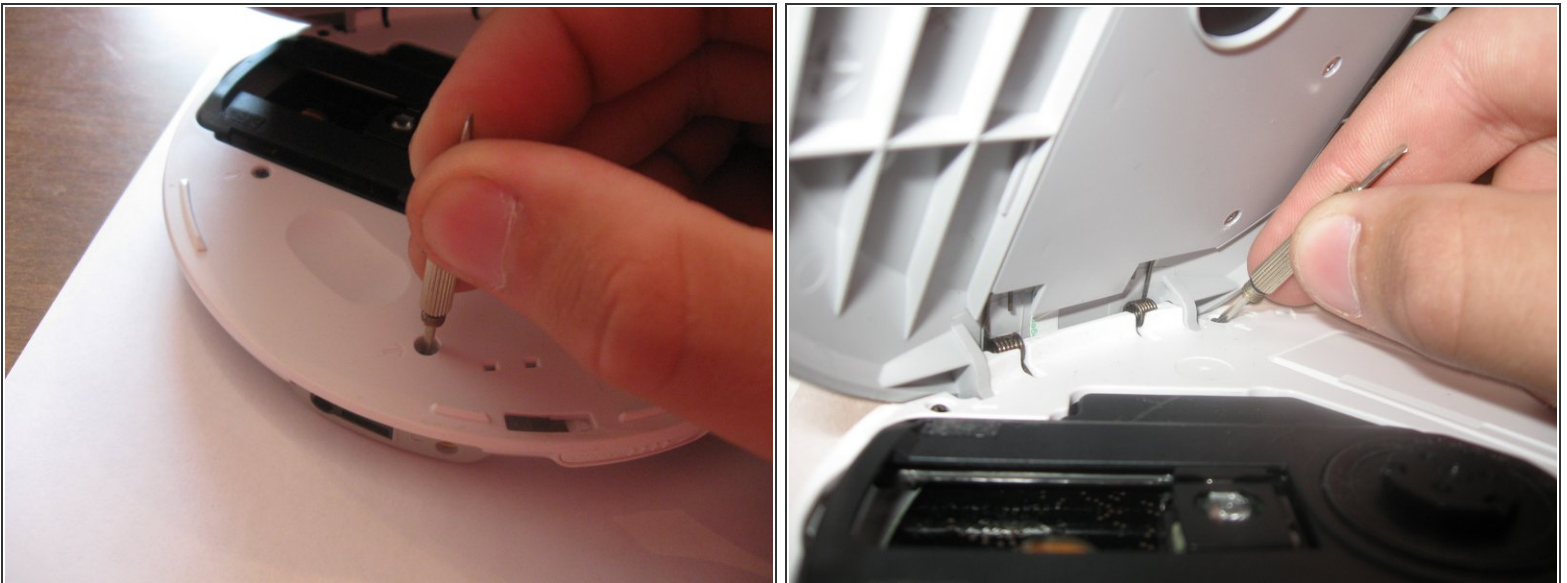
- Open it, remove any CDs and put away. Open the battery cover and remove the battery.

Step 3



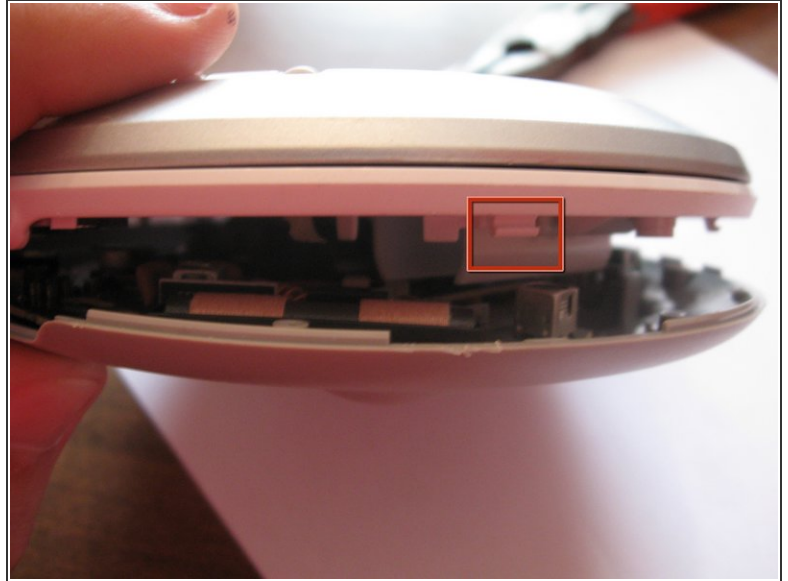
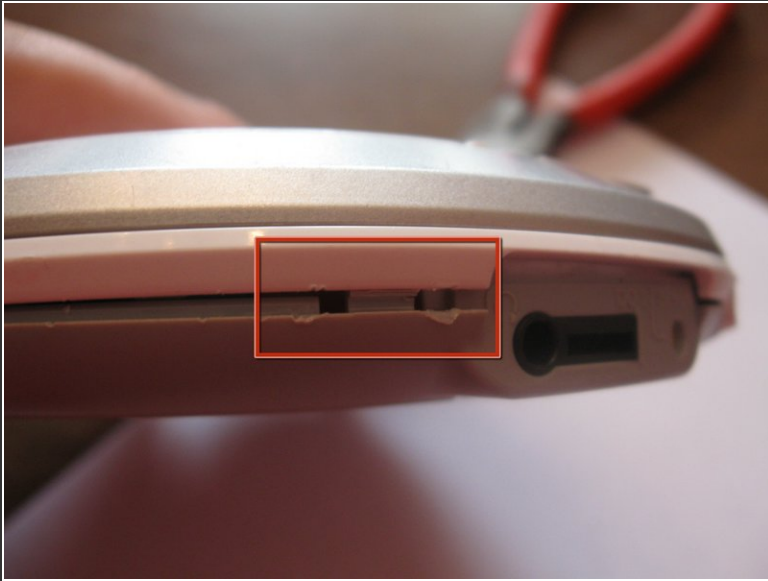
- Close the battery cover and locate your screwdriver.

Step 4



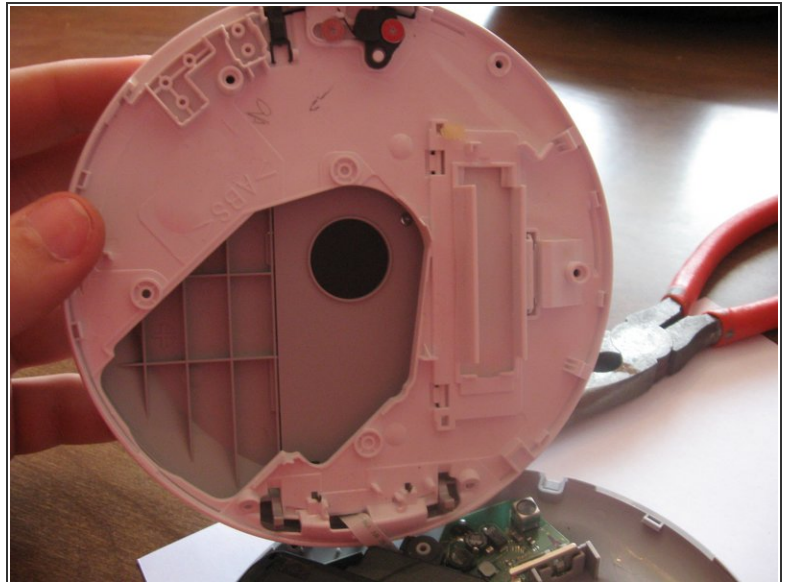
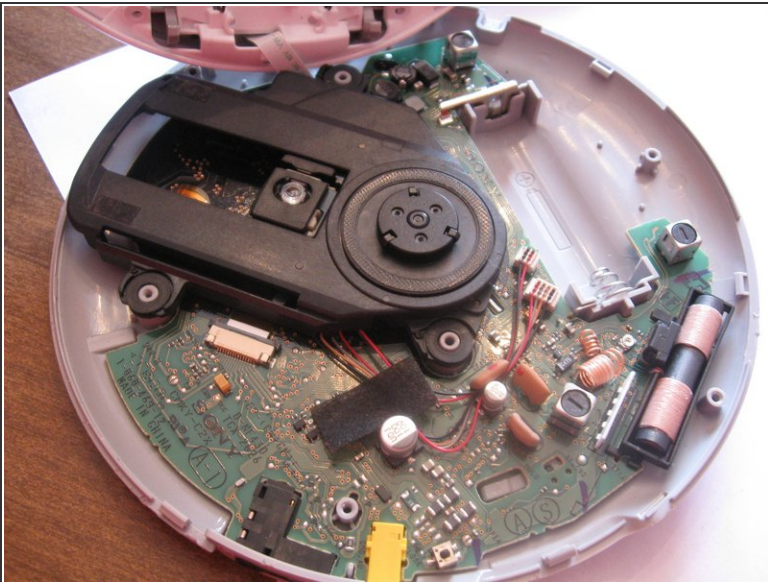
- Unscrew the six screws and place them on the magnet so you'll be able to find them later. Sony was nice enough to put the screws next to the lid at an angle so you can fit a screwdriver in there.

Step 5



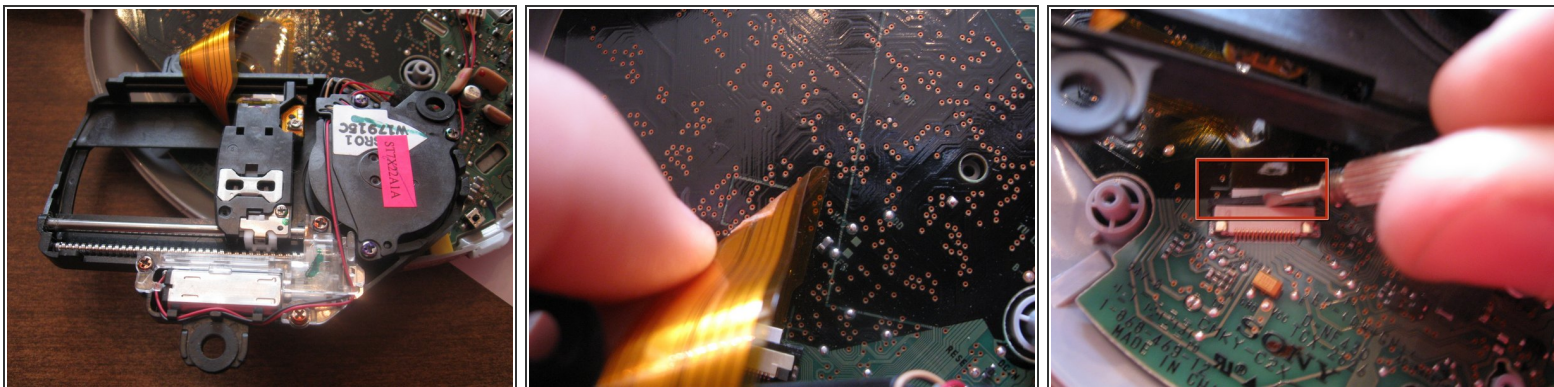
- Insert the tip of a screwdriver between the white upper layer and the gray lower layer. Carefully pry apart. There are small clips that help hold the two layers together and you don't want to snap them.

Step 6



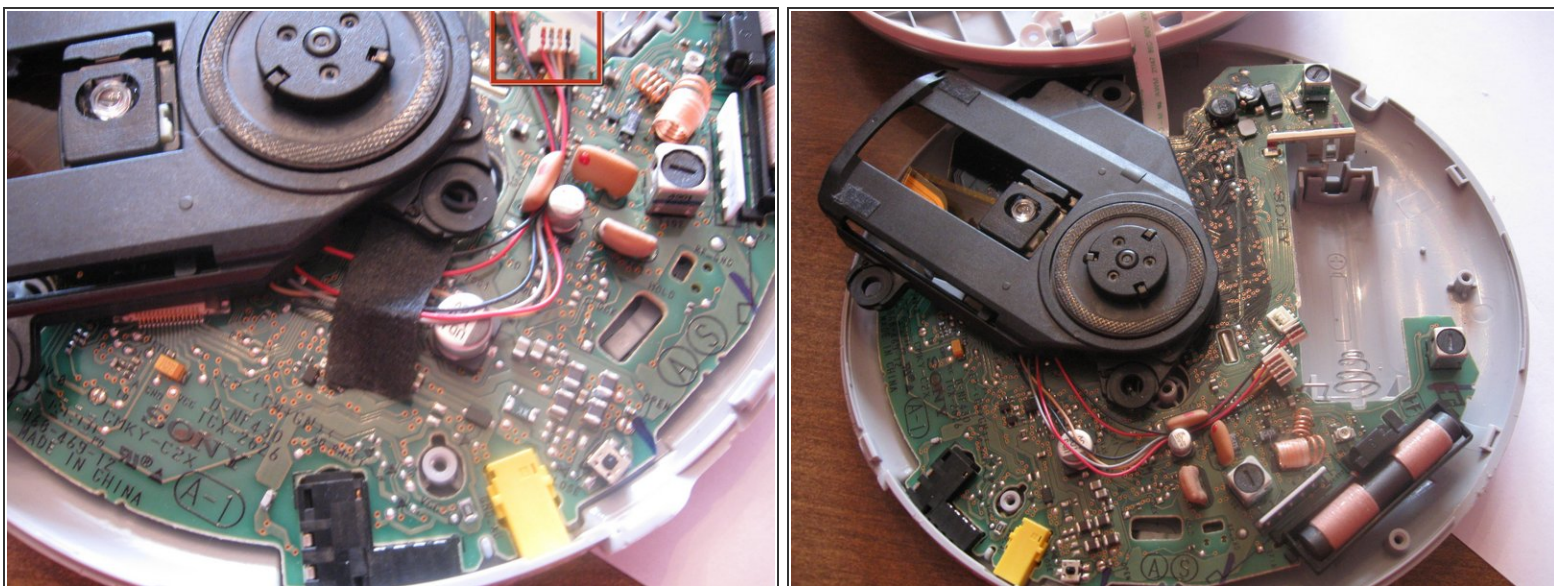
- Here's the inside of the bottom layer.

Step 7



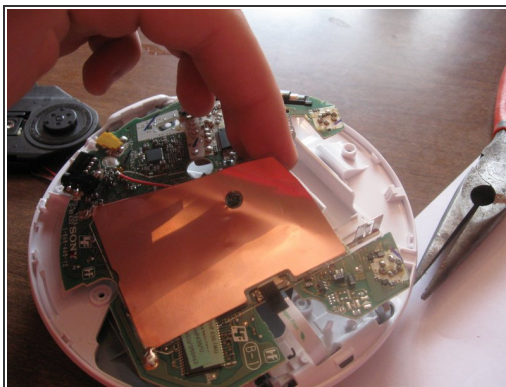
- Now to remove the laser reading assembly. Carefully peel the orange data ribbon off the circuit board to the plug. Using the flat screwdriver, pry the black clip away from the tan part.

Step 8



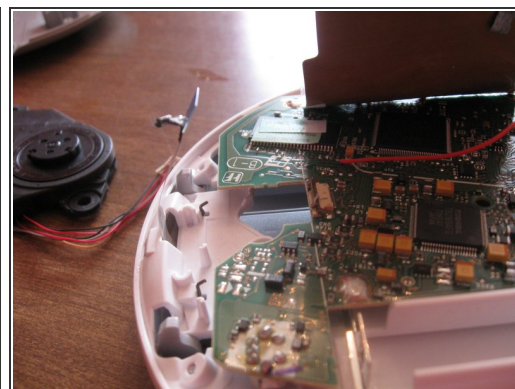
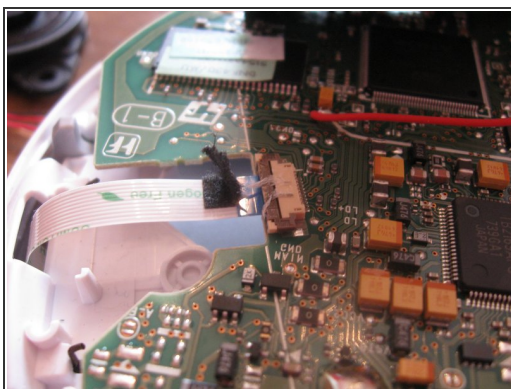
- Now for the power wires. Pry up on the side opposite of the wires.

Step 9



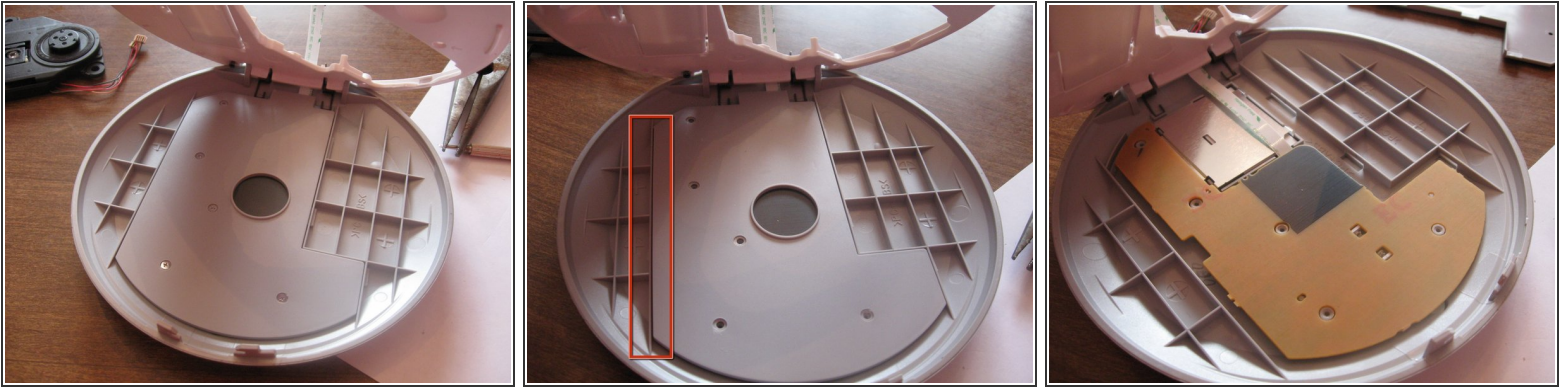
- Now for the other side. Carefully peel up the antenna plate so you can get at the other data ribbon.

Step 10



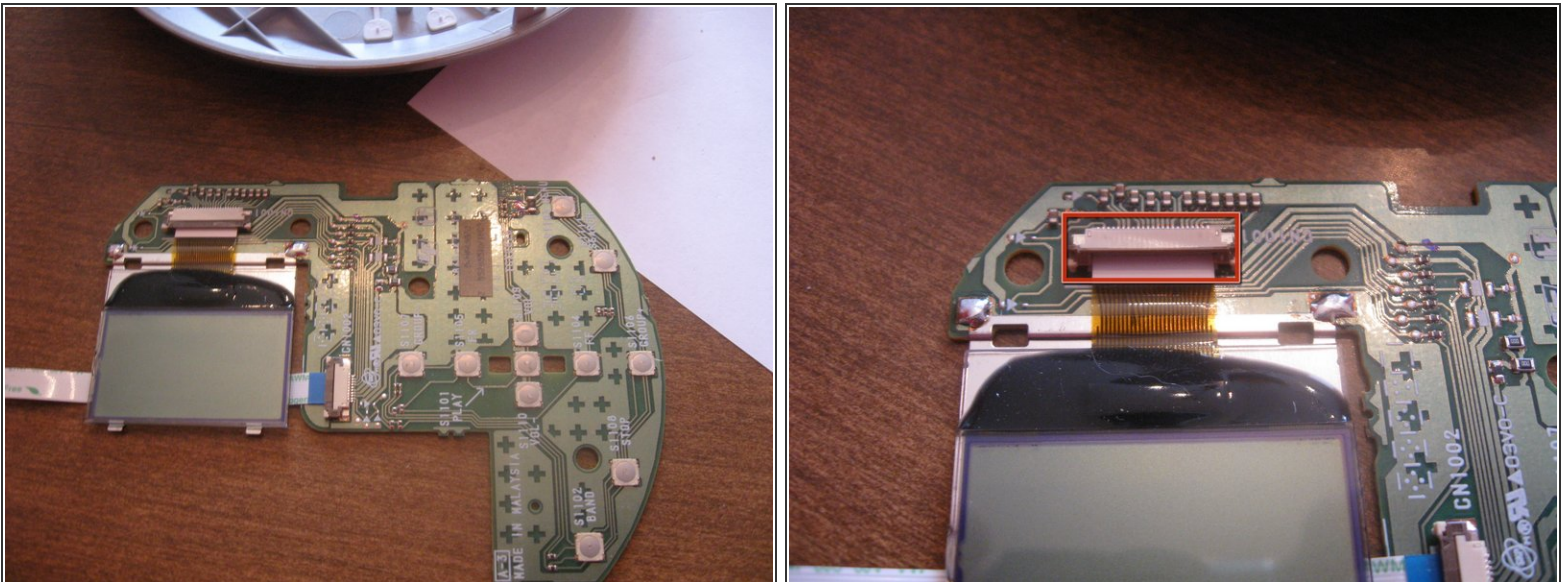
- Peel the black tape off the plug. Pry up with a screwdriver on the brown clip and remove the data ribbon.

Step 11



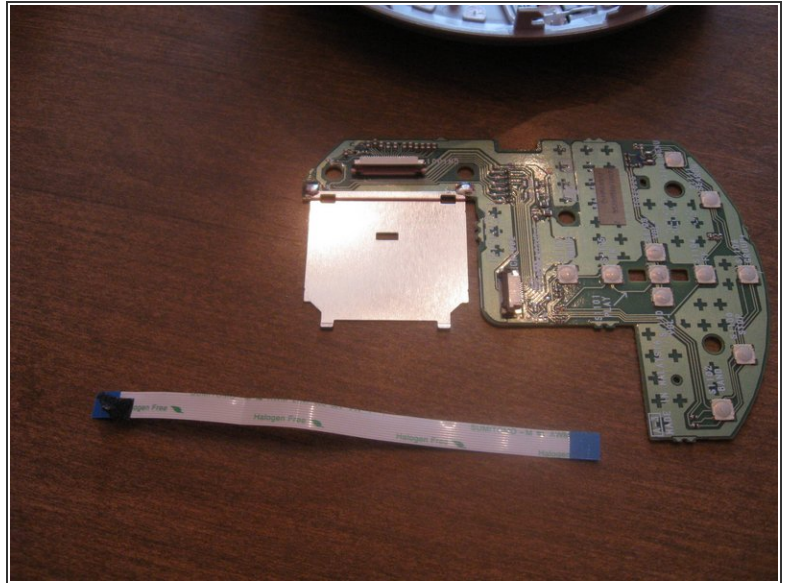
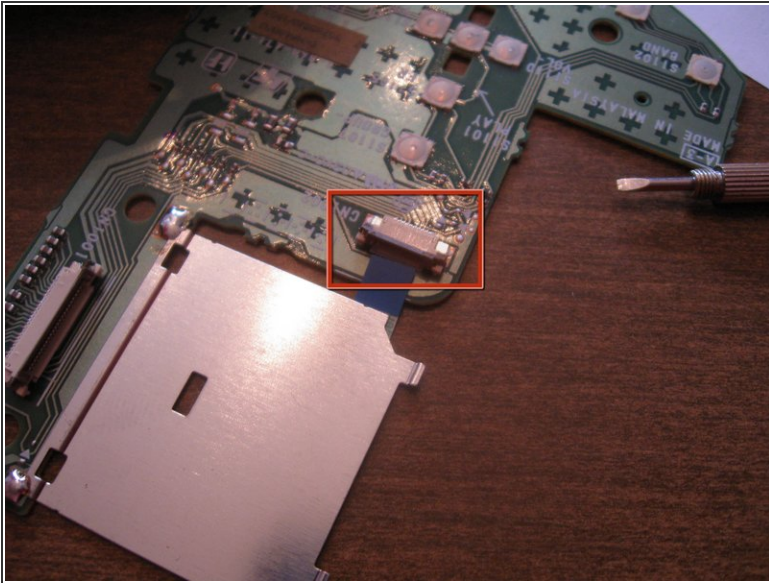
- Now for the top layer. unscrew the five screws and place them on the magnet. Pry up on the side indicated to remove the cover.

Step 12



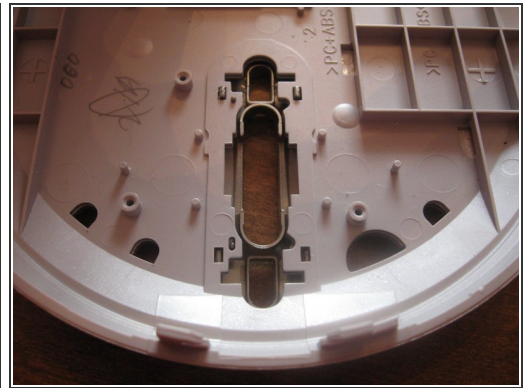
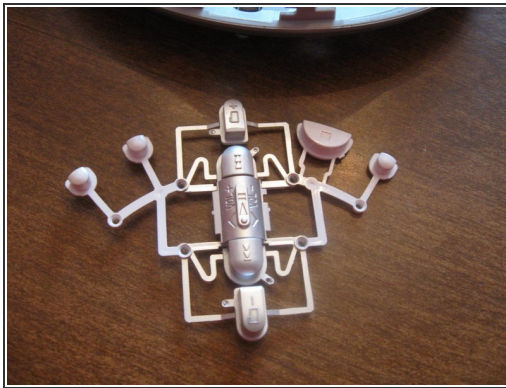
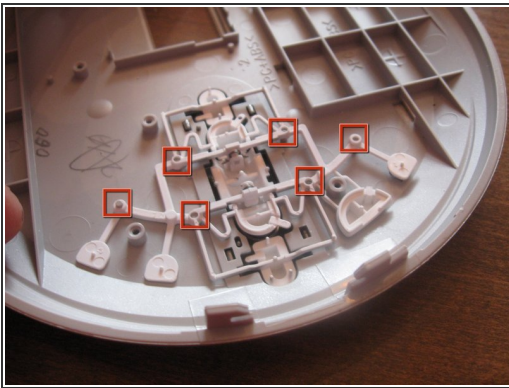
- Pull out the circuit board and LCD screen assembly. Pry up on the brown clip to remove the LCD screen.

Step 13



- Now you can remove the data ribbon by prying up on the brown clip.

Step 14



- To remove the buttons, carefully pry up around the little pins and pull up.

Step 15



- You're done! You have taken this CD player apart and broken it down into its individual components. Now to put it back together.

To reassemble your device, follow these instructions in reverse order.