



# Sony CDX-GT540UI CD Drive Replacement

This is a removal and replacement guide for a CD drive.

Written By: Odelkys Marquez



---

## INTRODUCTION

This will show one how to remove and replace the CD drive.

Before any repair work can be done one must remove the device for the vehicle. To do so follow this [link](#) to see a general vehicle removal of a stereo system.

---

### TOOLS:

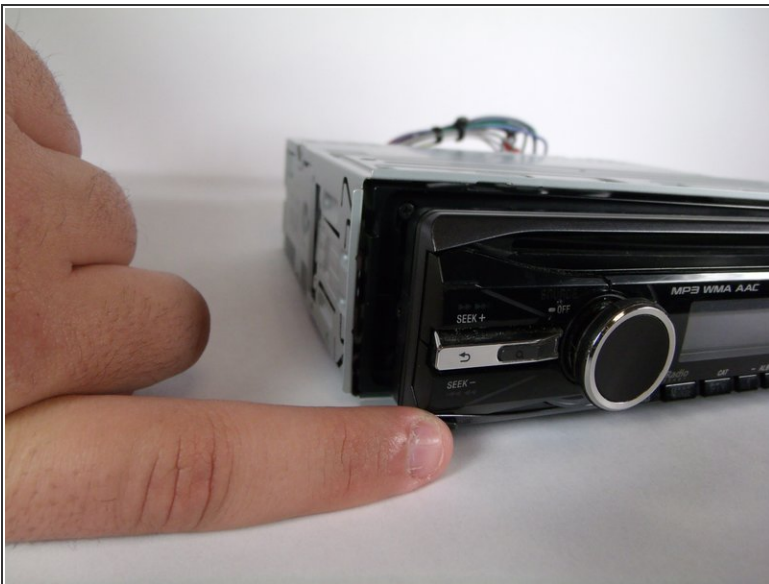
- [Phillips #00 Screwdriver](#) (1)
  - [iFixit Opening Tools](#) (1)
-

## Step 1 — Front Panel



- Locate face-plate eject button.

## Step 2



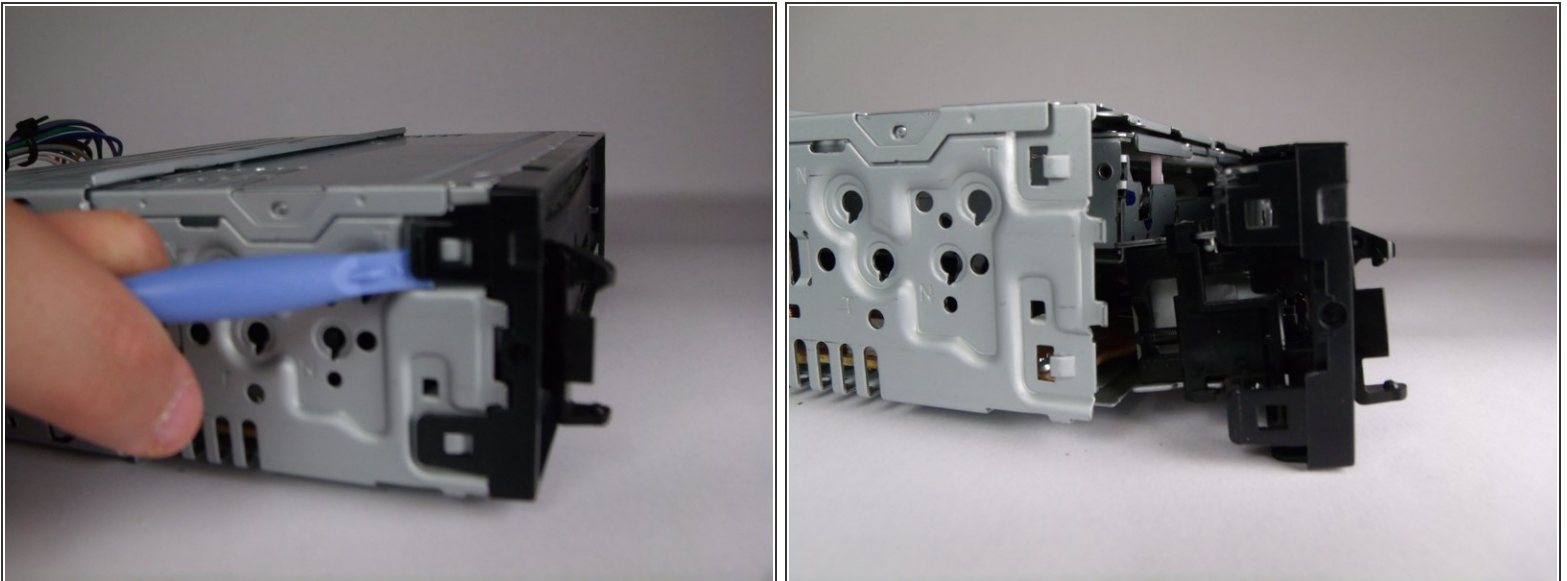
- Press the eject button.
- Remove the face-plate.

### Step 3



- Remove two 4.9mm Phillips #00screws on the front of the device.
- Remove two 7.5mm Phillips #00screws on the front of the device.
- ⓘ When the screws are removed, the eject lever may fall into the device. Make sure the device is held horizontal and level.

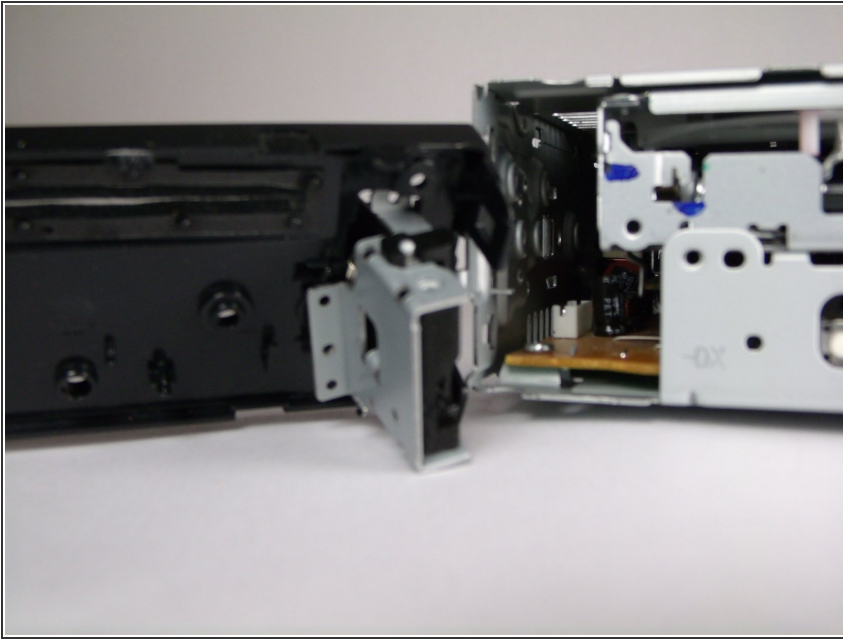
### Step 4



- Rotate device 90 degrees to either side.
- Use the plastic opening tool to pry open the top and bottom tab respectively.
- Repeat on opposite side.

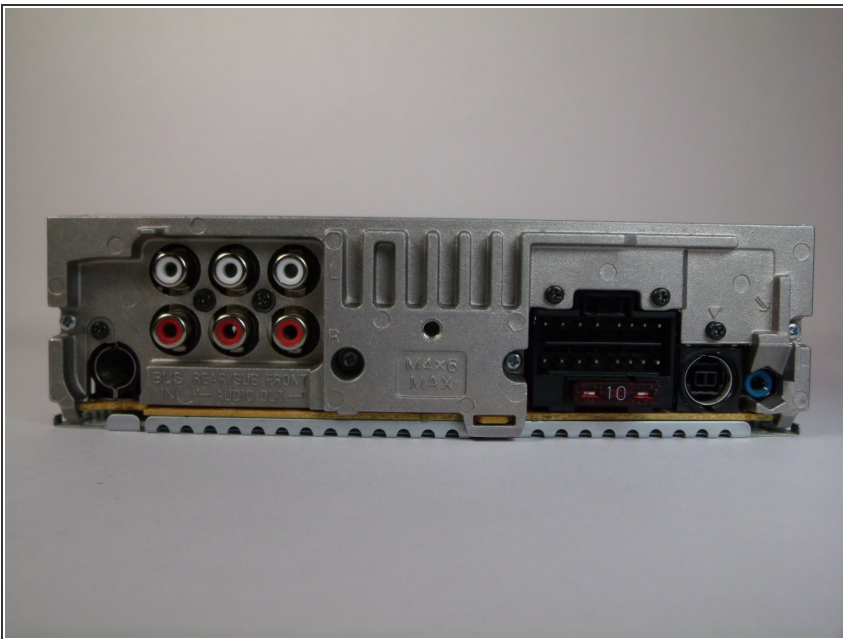


## Step 5



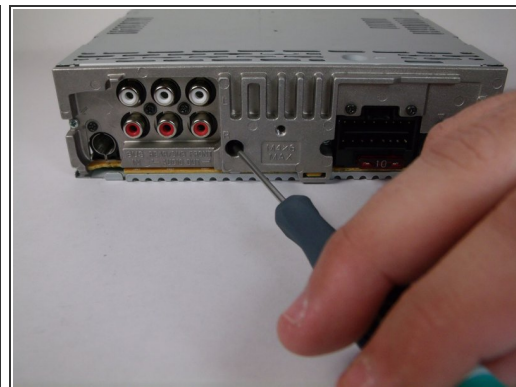
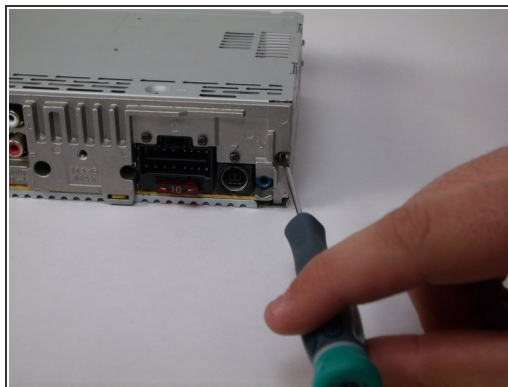
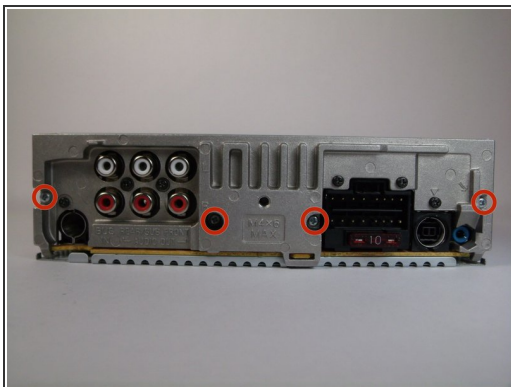
- Remove front panel.

## Step 6 — Back Panel



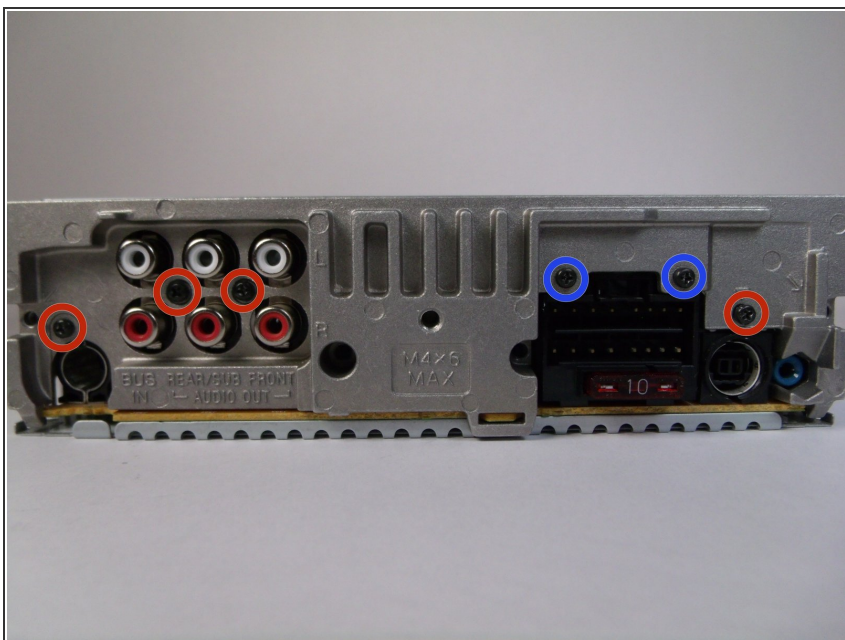
- Locate back panel.

## Step 7



- Remove four 11.5mm Phillips #00 (silver) screws from back panel.

## Step 8



- Remove four 9.5mm Phillips #00 (black) screws from back panel.
- Remove two 7.5mm Phillips #00 (black) screws from back panel.

## Step 9



- Remove back panel.

⚠ On the back panel there will be thermal (white) paste. Do not touch.

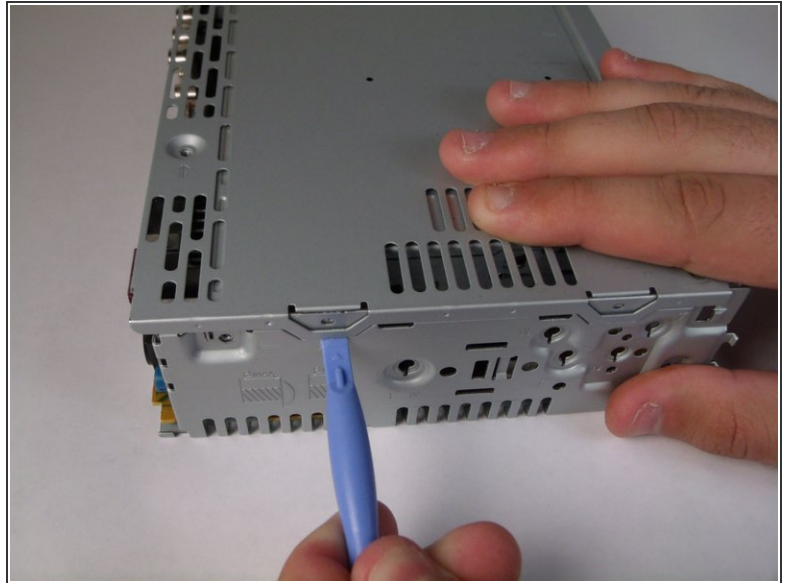
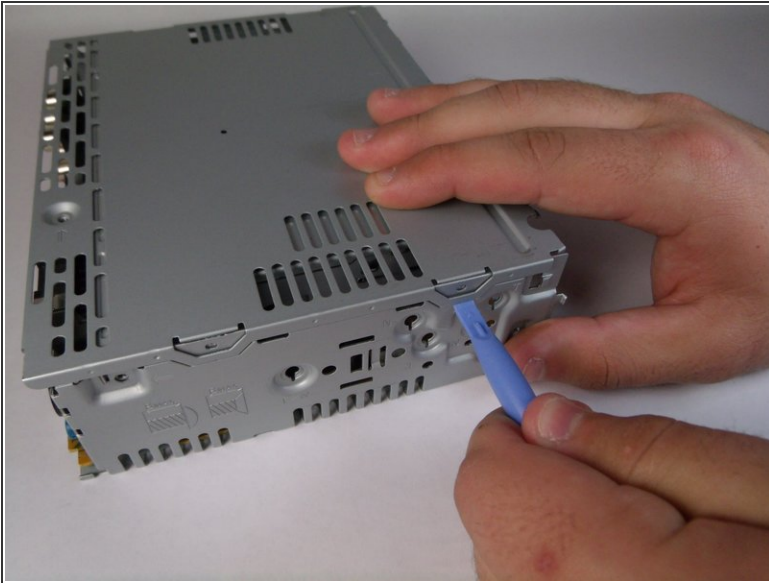
## Step 10 — CD Drive



- Remove one 9.5mm Phillips #00 screw.
- Rotate device 180 degrees and repeat step.



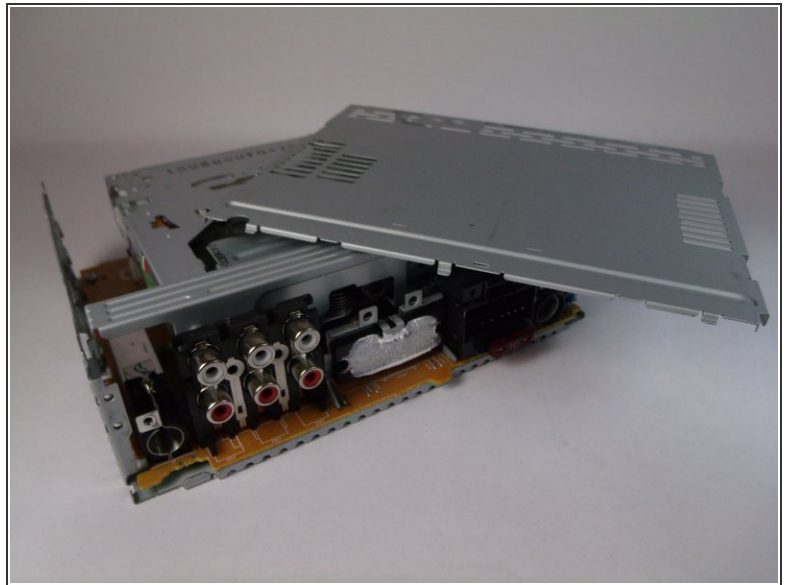
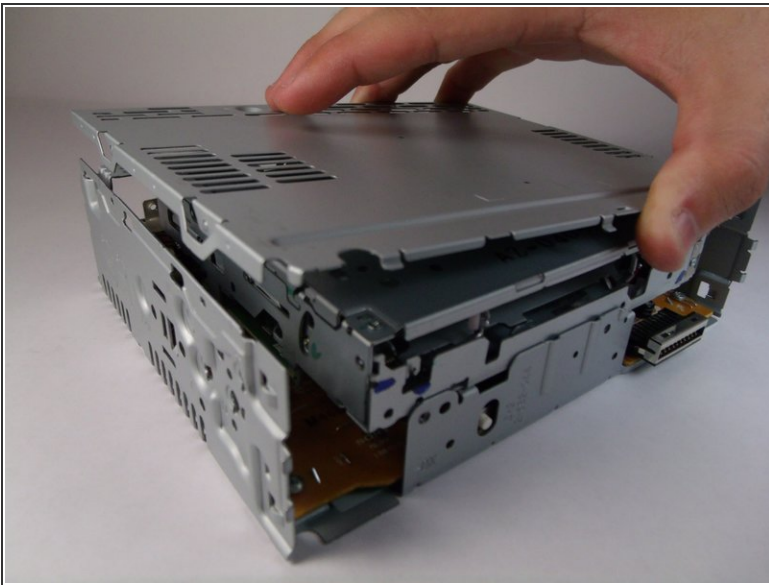
## Step 11



- Using plastic opening tool, detach the tabs. There are two on either side.

**i** You will need to apply a decent amount of force to detach.

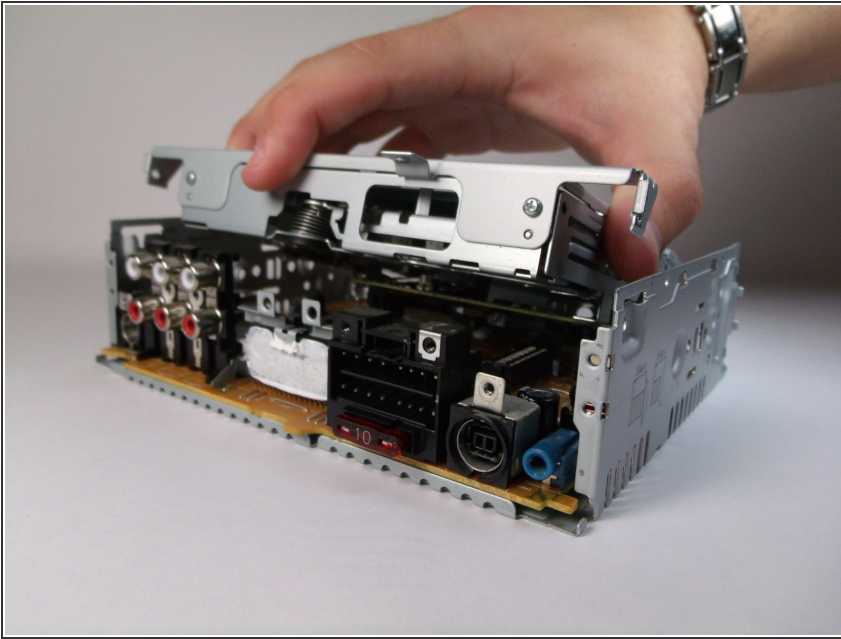
## Step 12



- Remove top panel.

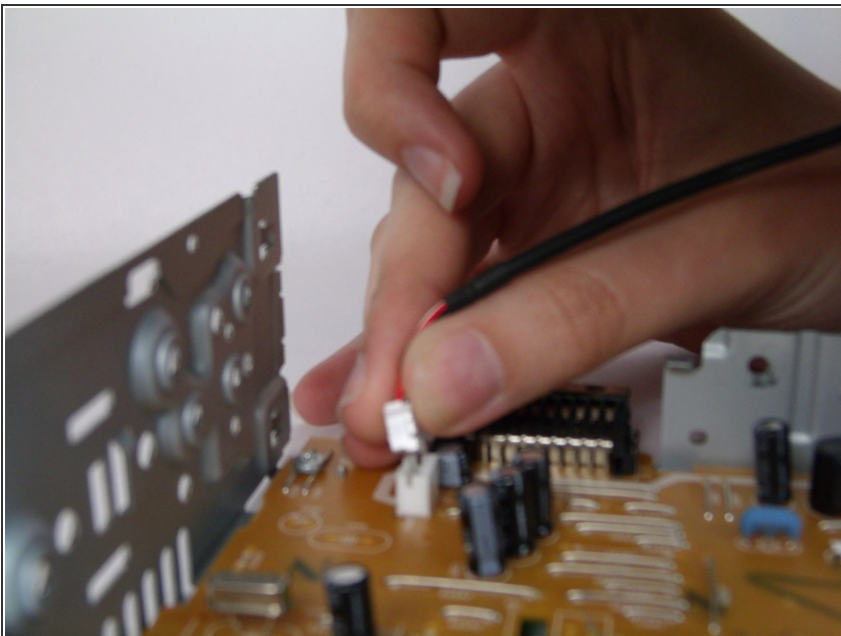


## Step 13



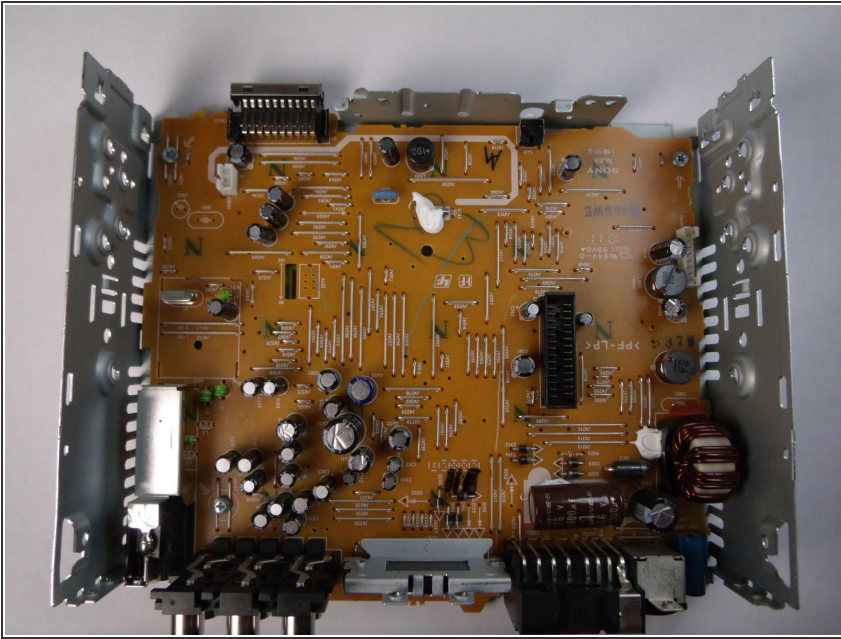
- Pull up CD drive slightly.

## Step 14



- Disconnect motherboard connection.

## Step 15



- Remove CD drive.

To reassemble your device, follow these instructions in reverse order.