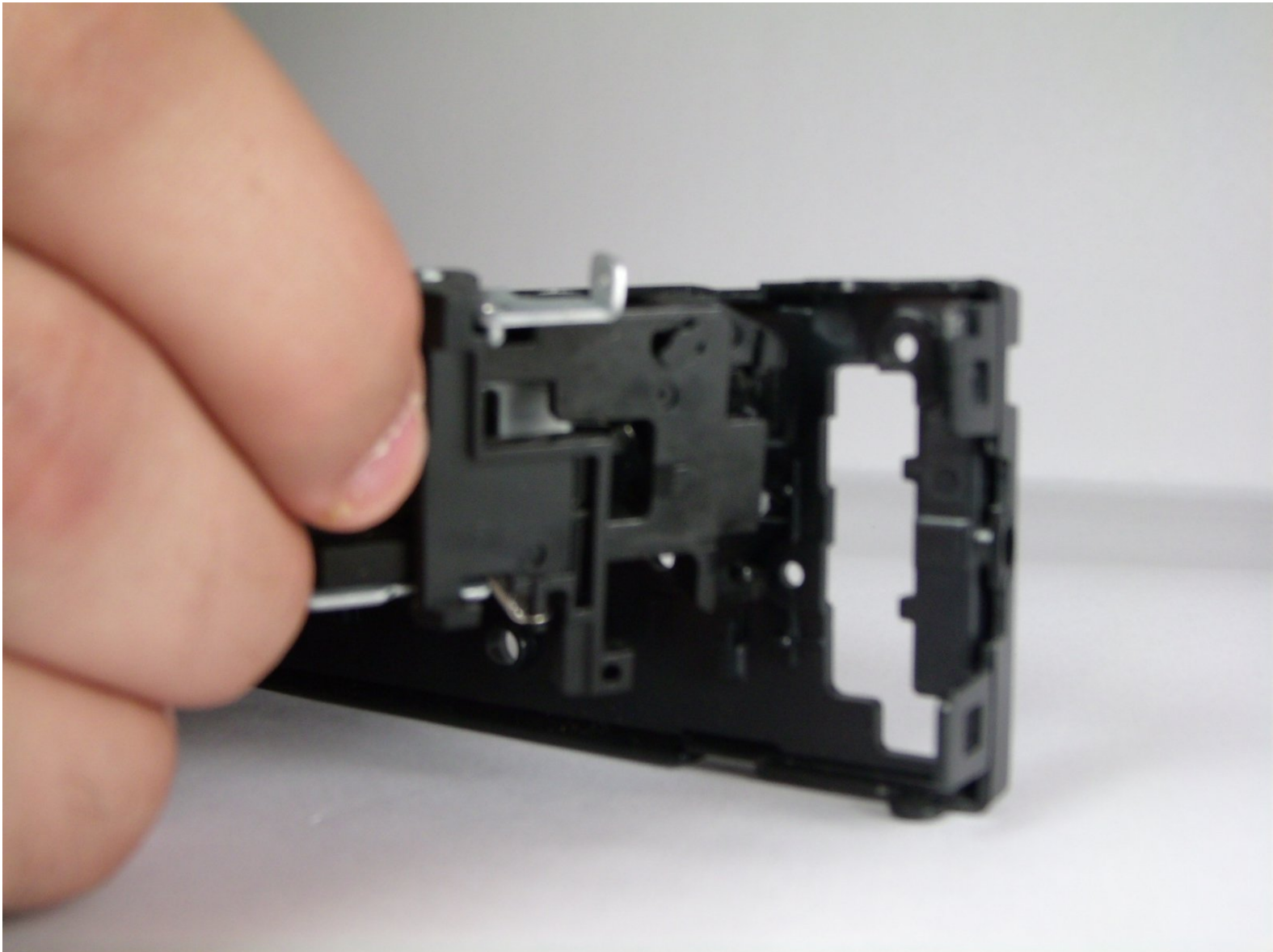




Sony CDX-GT540UI Face-Plate Eject Lever Replacement

This will show how to remove and replace the face-plate eject lever. This will allow one to take advantage of the security feature of a removable face-plate.

Written By: Odelkys Marquez



INTRODUCTION

This guide will show how to remove and replace the face-plate eject lever on the device.

Before any repair work can be done one must remove the device for the vehicle. To do so follow this [link](#) to see a general vehicle removal of a stereo system.

TOOLS:

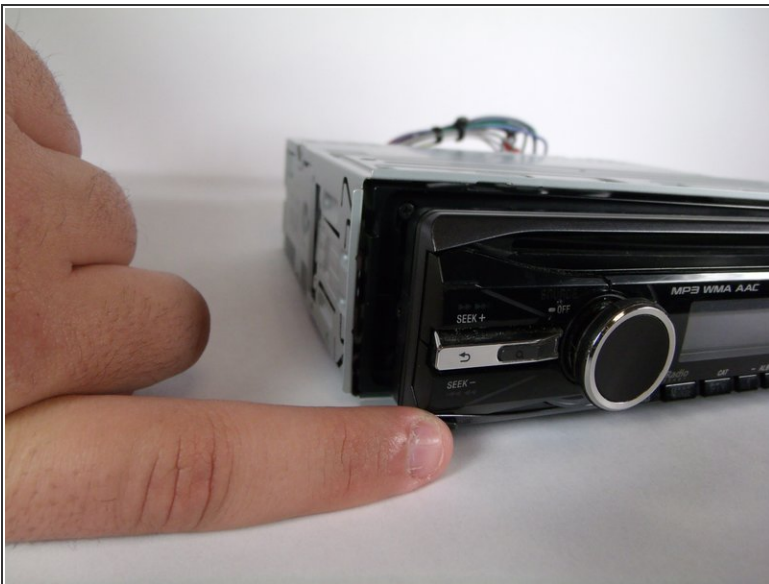
- [Phillips #00 Screwdriver](#) (1)
 - [iFixit Opening Tools](#) (1)
-

Step 1 — Front Panel



- Locate face-plate eject button.

Step 2



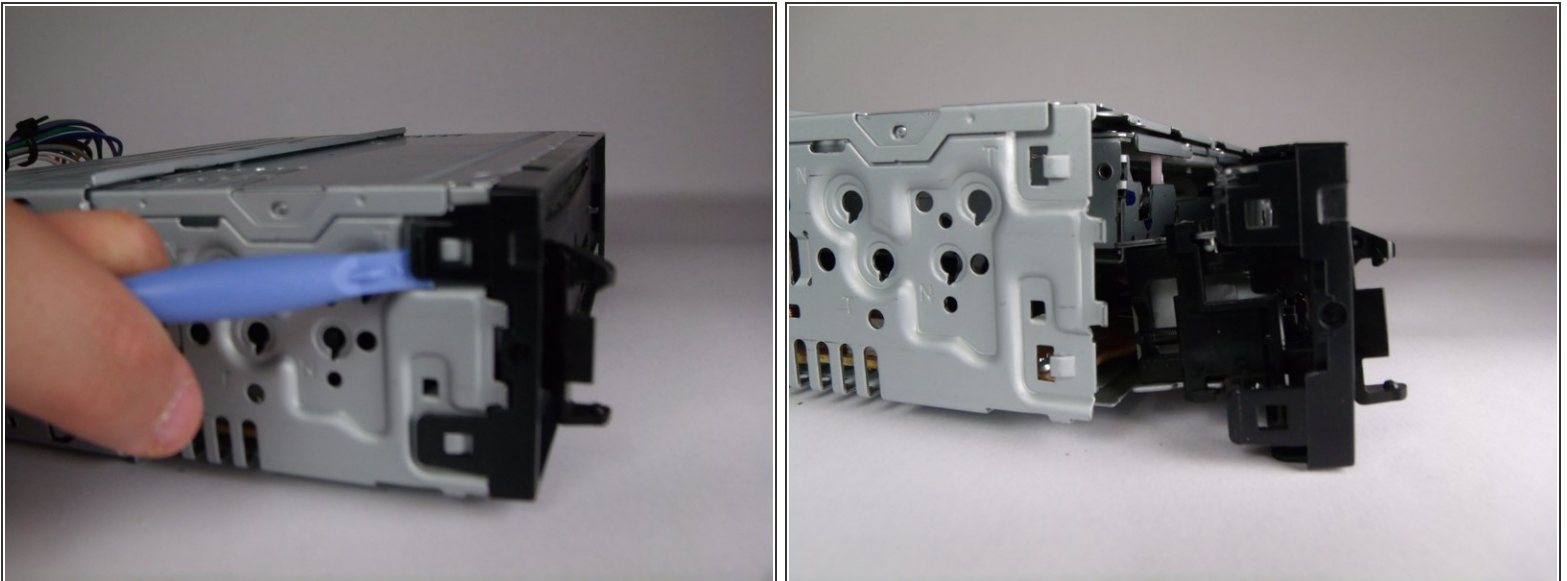
- Press the eject button.
- Remove the face-plate.

Step 3



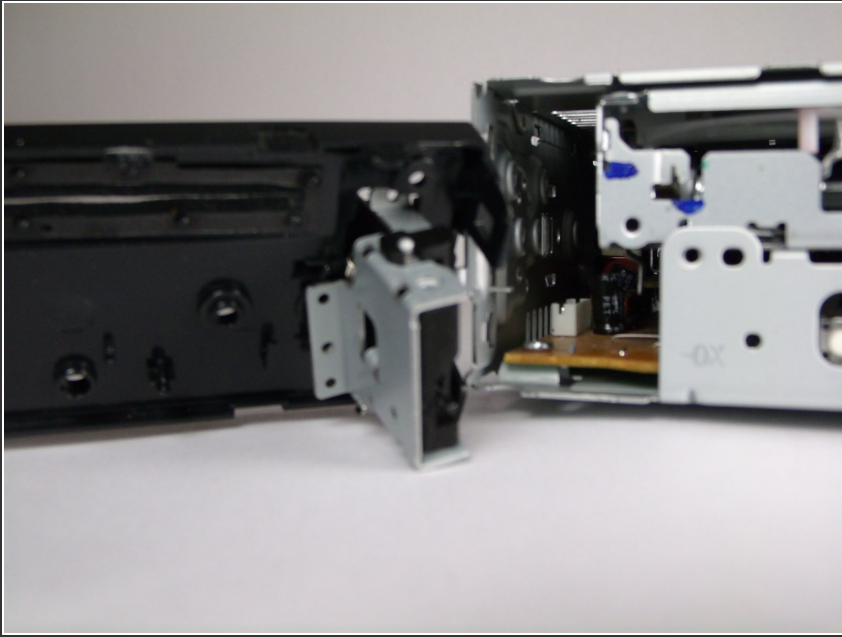
- Remove two 4.9mm Phillips #00screws on the front of the device.
- Remove two 7.5mm Phillips #00screws on the front of the device.
- ⓘ When the screws are removed, the eject lever may fall into the device. Make sure the device is held horizontal and level.

Step 4



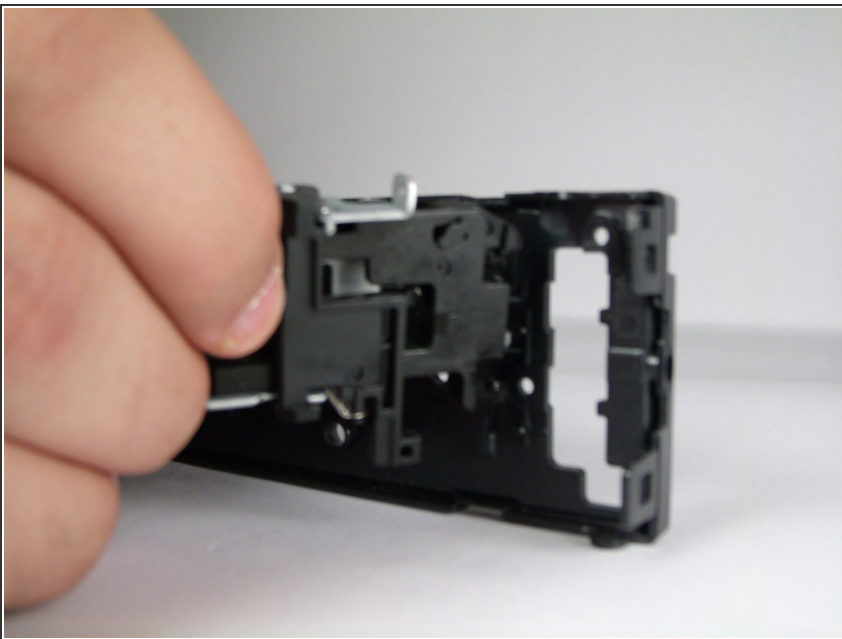
- Rotate device 90 degrees to either side.
- Use the plastic opening tool to pry open the top and bottom tab respectively.
- Repeat on opposite side.

Step 5



- Remove front panel.

Step 6 — Face-plate Eject Lever



- Remove the eject lever.

To reassemble your device, follow these instructions in reverse order.