



# Sony CDX-GT540UI Front Panel Replacement

This guide will show the removal of the front panel to get inside your device for repair.

Written By: Odelkys Marquez



---

## INTRODUCTION

This will be the initial step for getting into your device for repair.

Before any repair work can be done, one must remove the device from the vehicle. To do so follow this [link](#) to see a vehicle general removal of a stereo system.



### TOOLS:

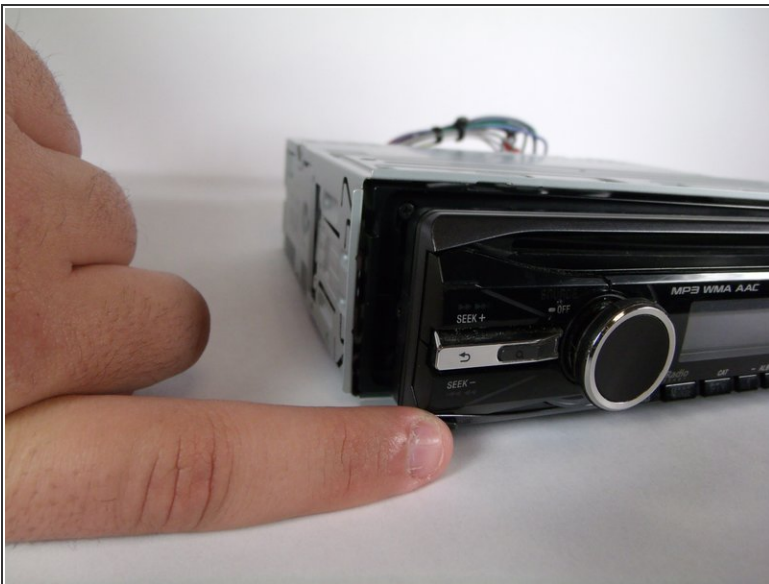
- [Phillips #00 Screwdriver](#) (1)
  - [iFixit Opening Tools](#) (1)
-

## Step 1 — Front Panel



- Locate face-plate eject button.

## Step 2



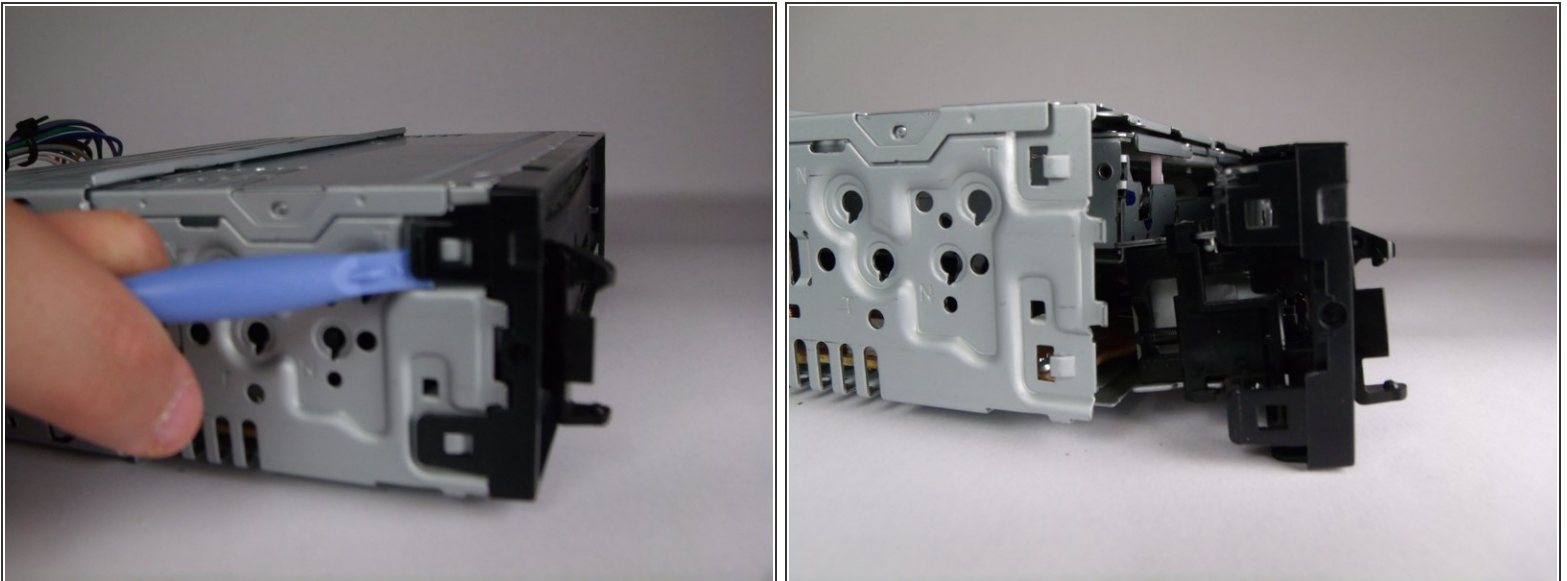
- Press the eject button.
- Remove the face-plate.

### Step 3



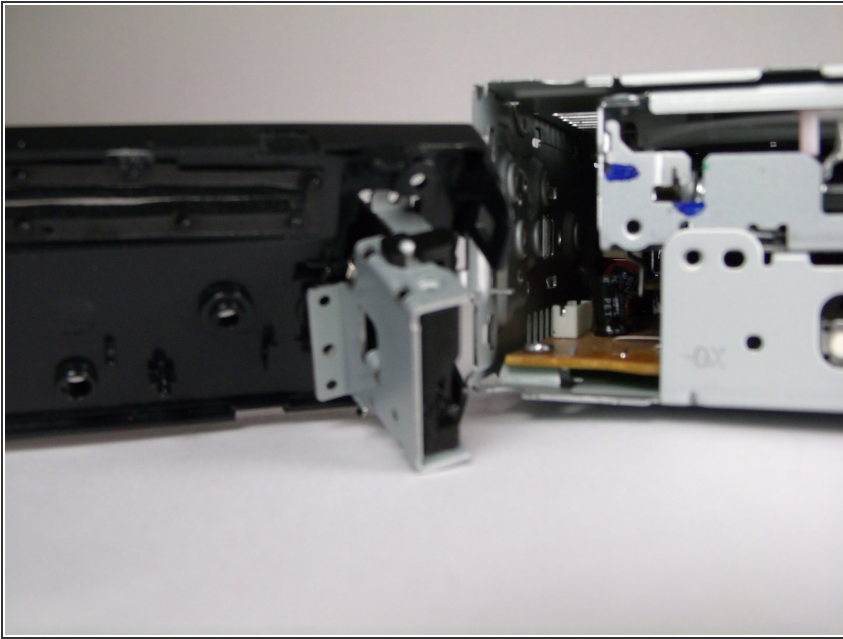
- Remove two 4.9mm Phillips #00screws on the front of the device.
- Remove two 7.5mm Phillips #00screws on the front of the device.
- ⓘ When the screws are removed, the eject lever may fall into the device. Make sure the device is held horizontal and level.

### Step 4



- Rotate device 90 degrees to either side.
- Use the plastic opening tool to pry open the top and bottom tab respectively.
- Repeat on opposite side.

## Step 5



- Remove front panel.

To reassemble your device, follow these instructions in reverse order.