



Sony CDX-GT540UI Fuse Replacement

Shows how to replace a bad fuse.

Written By: Odelkys Marquez



INTRODUCTION

This guide will show how to replace a bad fuse, which will cause the device not to turn on.

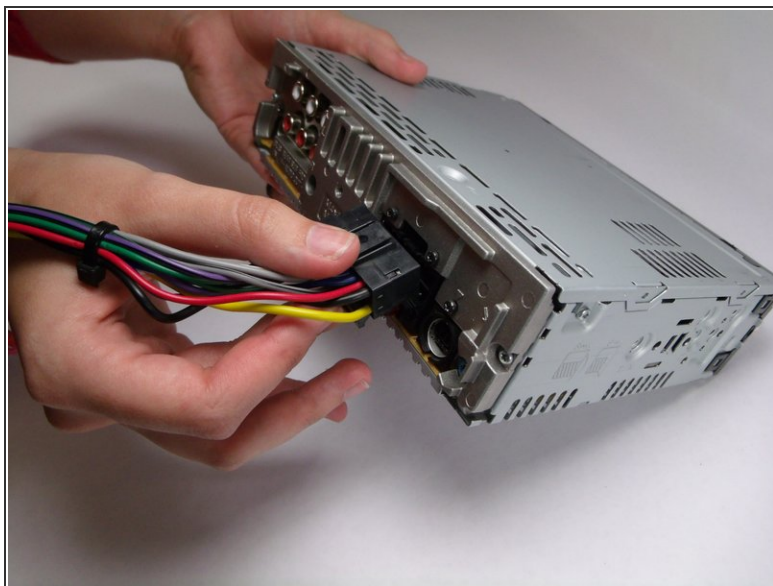
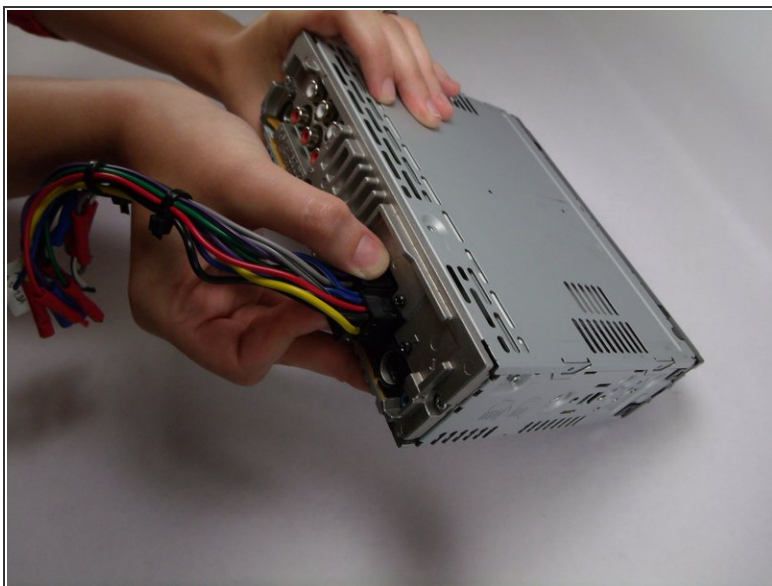
Before any repair work can be done, one must remove the device from the vehicle. To do so follow this [link](#) to see a vehicle general removal of a stereo system.

Step 1 — Wiring Harness



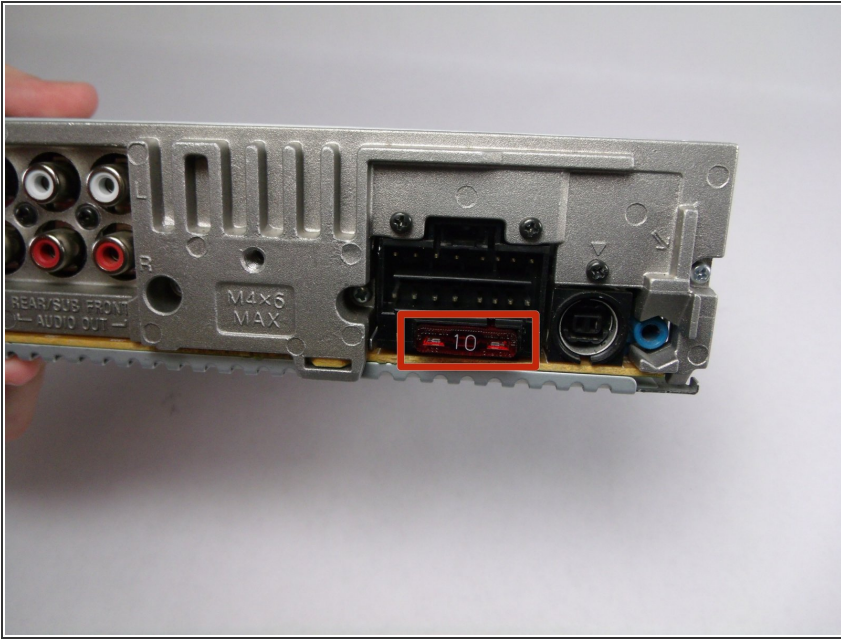
- Locate the clip on the wiring harness.

Step 2



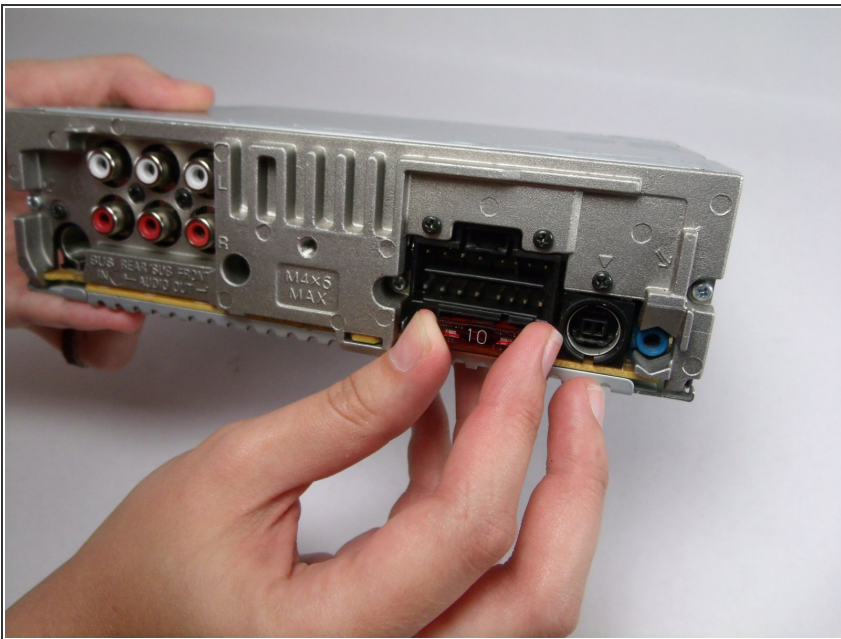
- Press down on the clip like you would an Ethernet cable.
- Rock harness side to side, pulling gently towards you until harness detaches.

Step 3 — Fuse



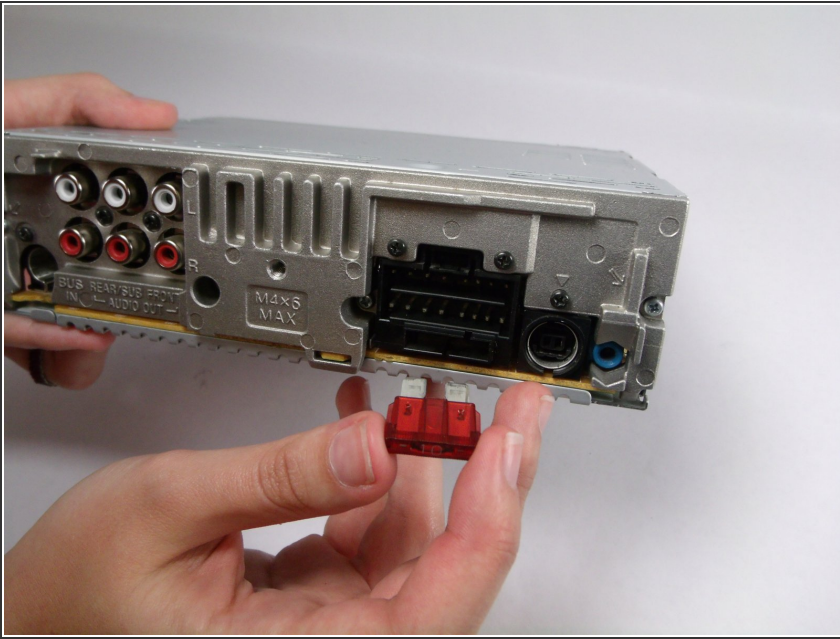
- Once you have removed the wiring harness.
- Locate the fuse.

Step 4



- Using your index finger and thumb on either side of the fuse.

Step 5



- Rock back and forth gently pulling towards yourself until the fuse is removed.

To reassemble your device, follow these instructions in reverse order.