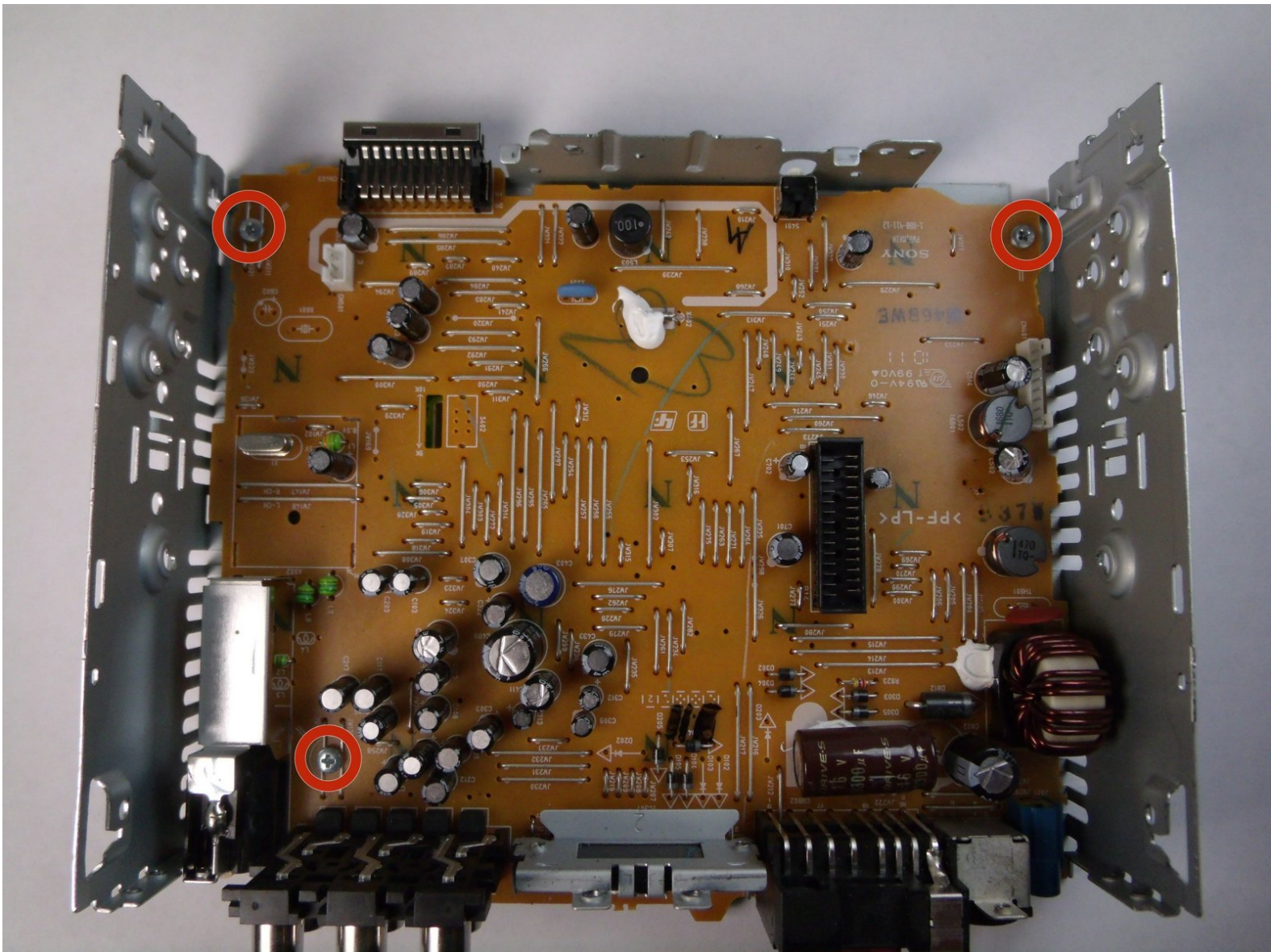




Sony CDX-GT540UI Motherboard Replacement

As a last resort, replace the motherboard.

Written By: Odelkys Marquez



INTRODUCTION

This guide will show how to replace a motherboard. The motherboard could be causing faulty display, not turning on, and bad sound quality on a continuous basis.

Before any repair work can be done, one must remove the device from the vehicle. To do so follow this [link](#) to see a vehicle general removal of a stereo system.

TOOLS:

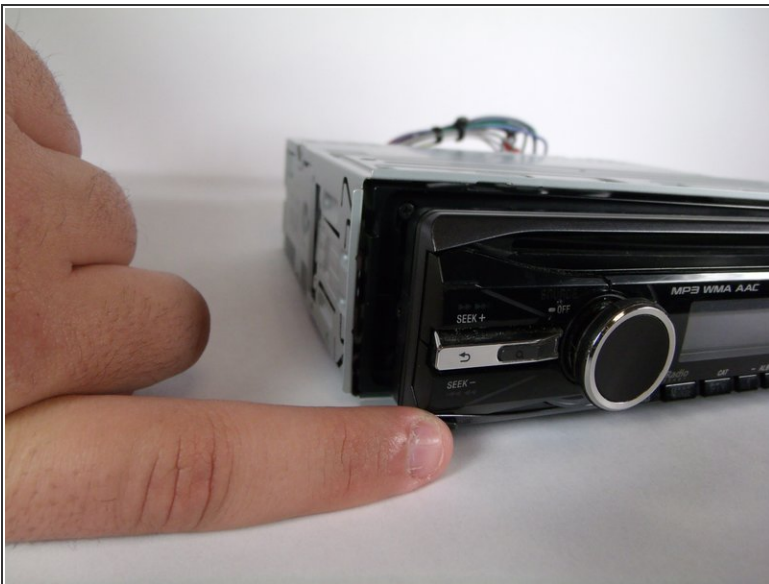
- [Phillips #00 Screwdriver](#) (1)
 - [iFixit Opening Tools](#) (1)
-

Step 1 — Front Panel



- Locate face-plate eject button.

Step 2



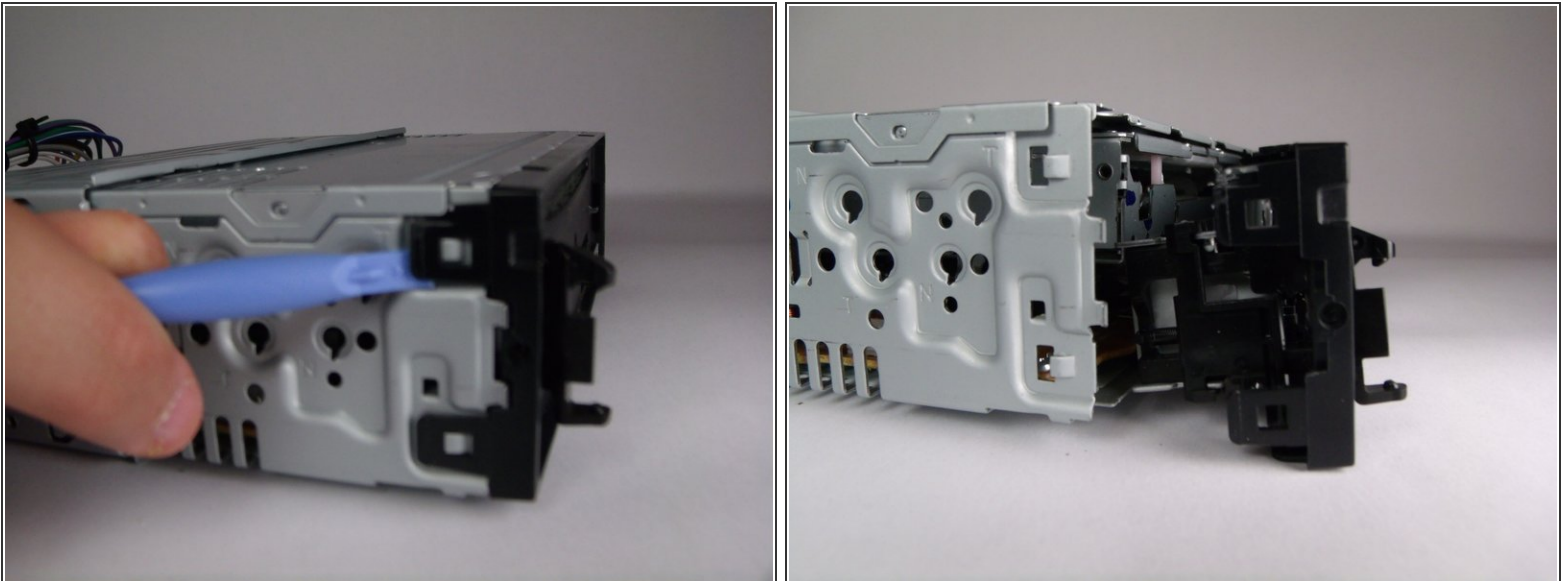
- Press the eject button.
- Remove the face-plate.

Step 3



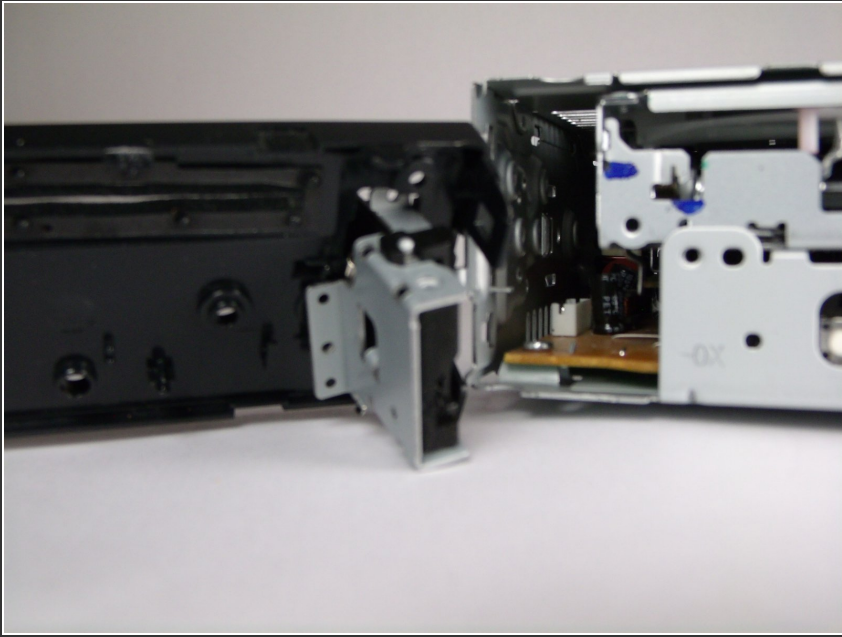
- Remove two 4.9mm Phillips #00screws on the front of the device.
- Remove two 7.5mm Phillips #00screws on the front of the device.
- ⓘ When the screws are removed, the eject lever may fall into the device. Make sure the device is held horizontal and level.

Step 4



- Rotate device 90 degrees to either side.
- Use the plastic opening tool to pry open the top and bottom tab respectively.
- Repeat on opposite side.

Step 5



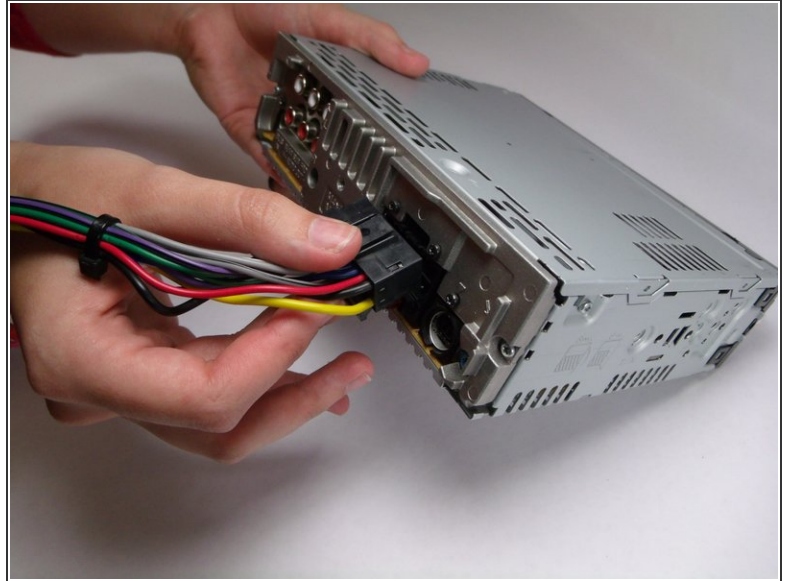
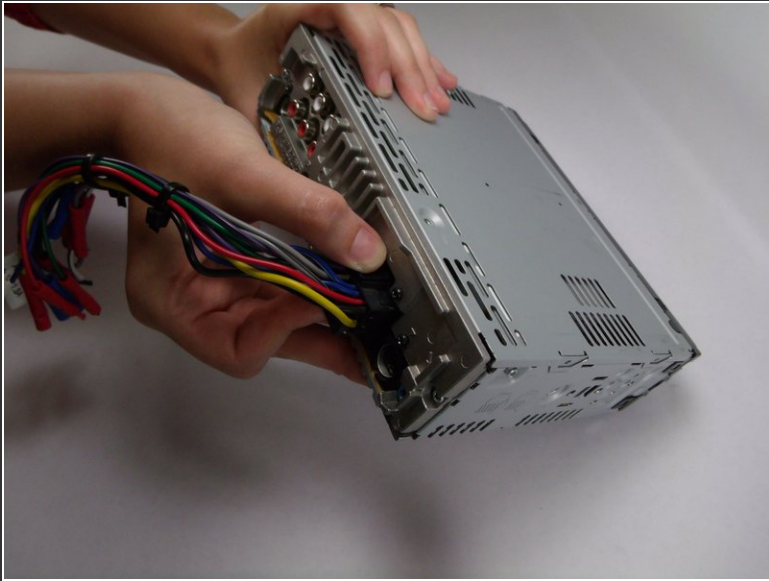
- Remove front panel.

Step 6 — Wiring Harness



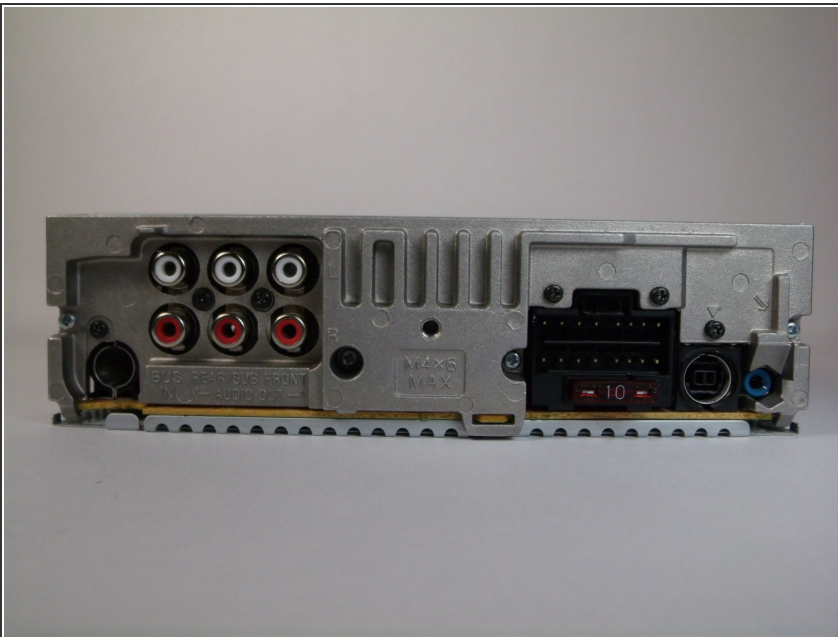
- Locate the clip on the wiring harness.

Step 7



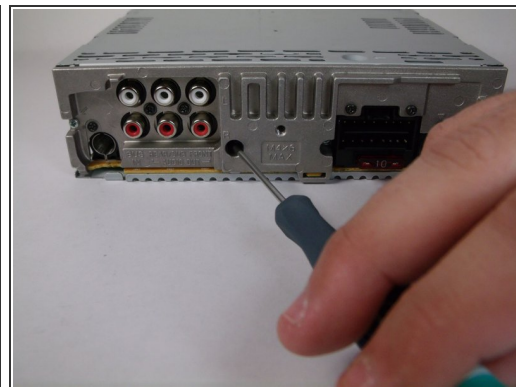
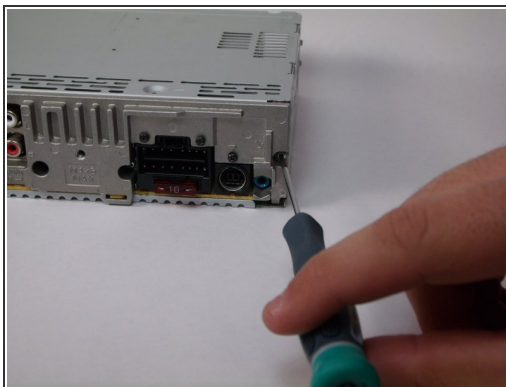
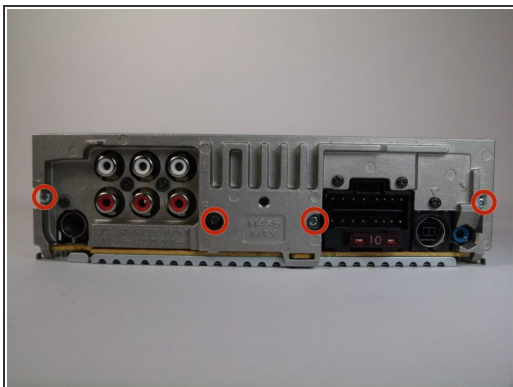
- Press down on the clip like you would an Ethernet cable.
- Rock harness side to side, pulling gently towards you until harness detaches.

Step 8 — Back Panel



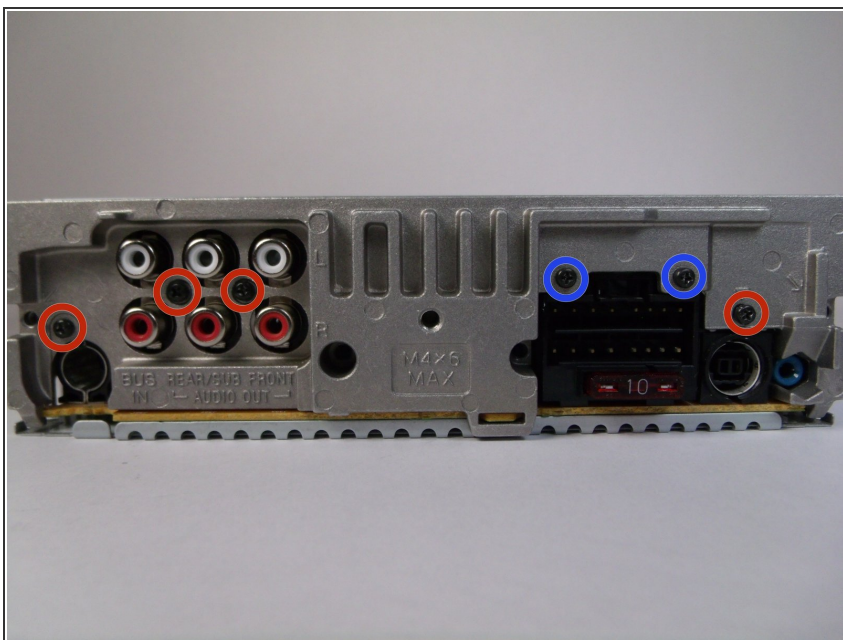
- Locate back panel.

Step 9



- Remove four 11.5mm Phillips #00 (silver) screws from back panel.

Step 10



- Remove four 9.5mm Phillips #00 (black) screws from back panel.
- Remove two 7.5mm Phillips #00 (black) screws from back panel.

Step 11



- Remove back panel.

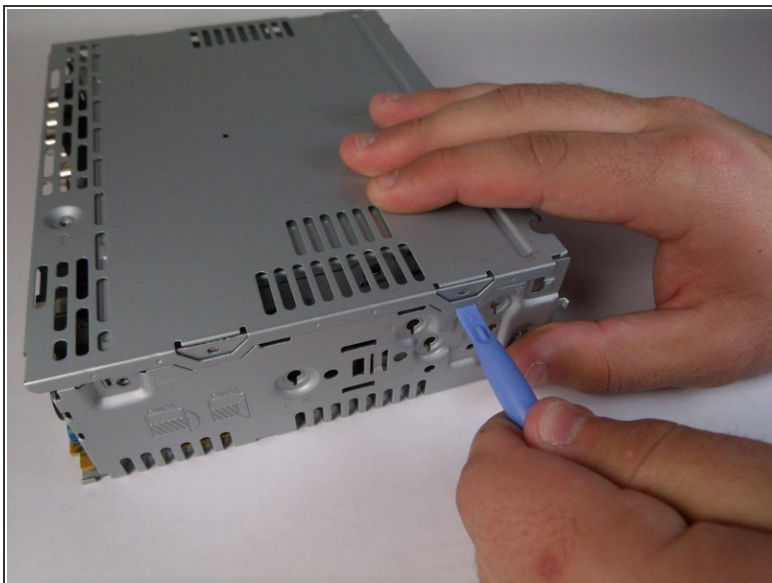
⚠ On the back panel there will be thermal (white) paste. Do not touch.

Step 12 — CD Drive



- Remove one 9.5mm Phillips #00 screw.
- Rotate device 180 degrees and repeat step.

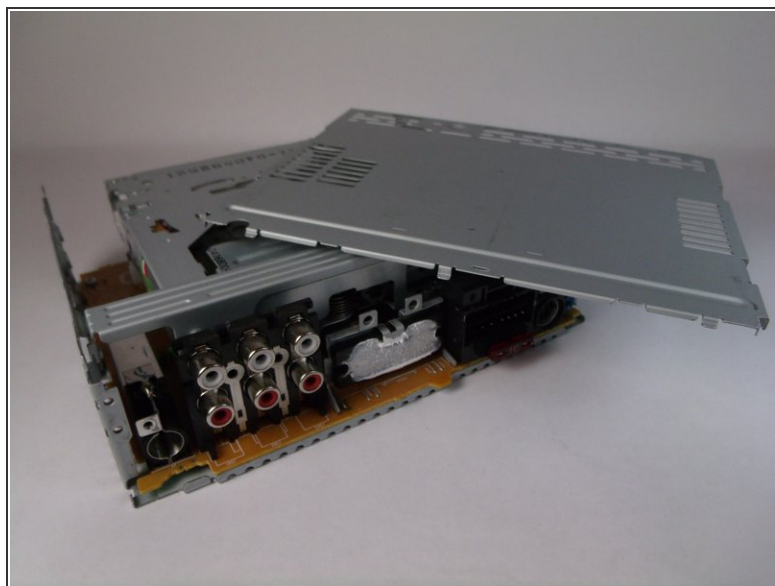
Step 13



- Using plastic opening tool, detach the tabs. There are two on either side.

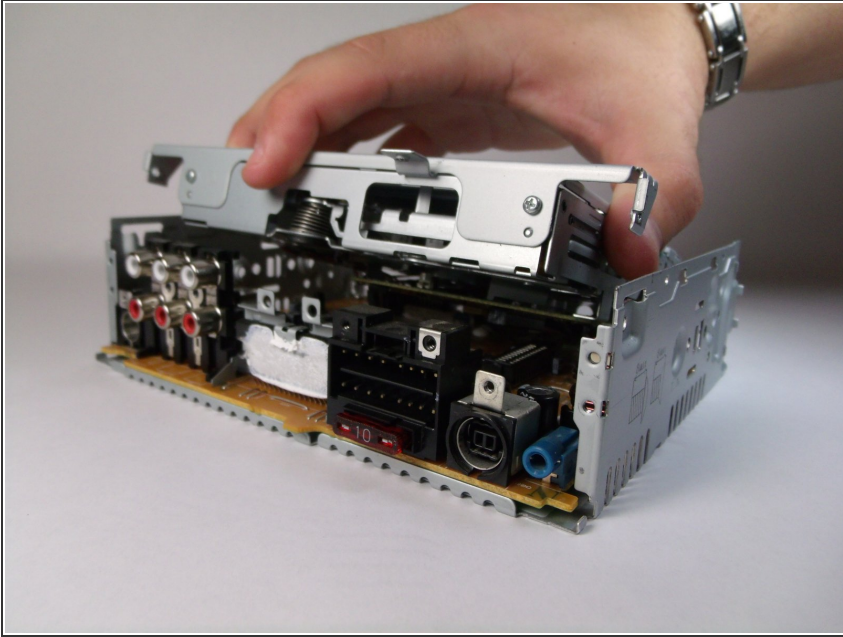
i You will need to apply a decent amount of force to detach.

Step 14



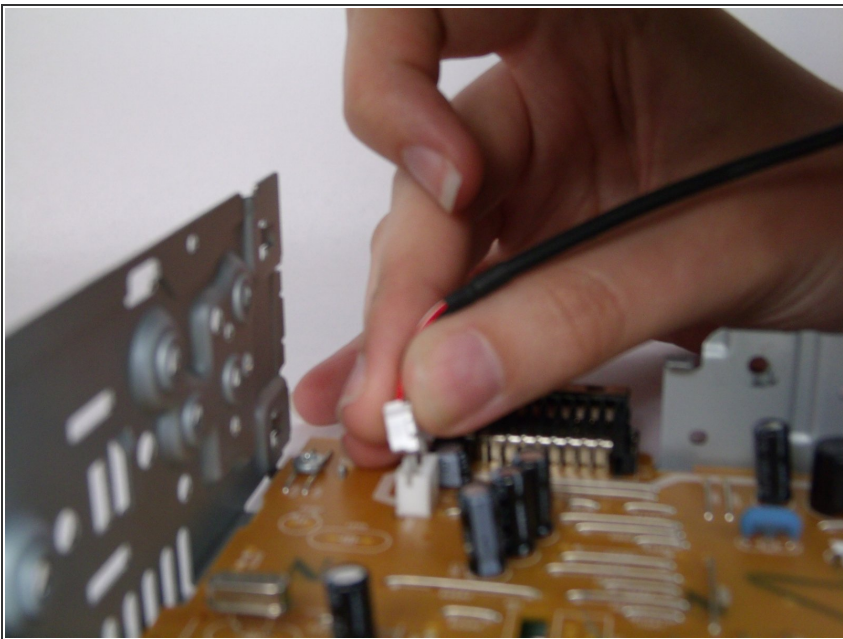
- Remove top panel.

Step 15



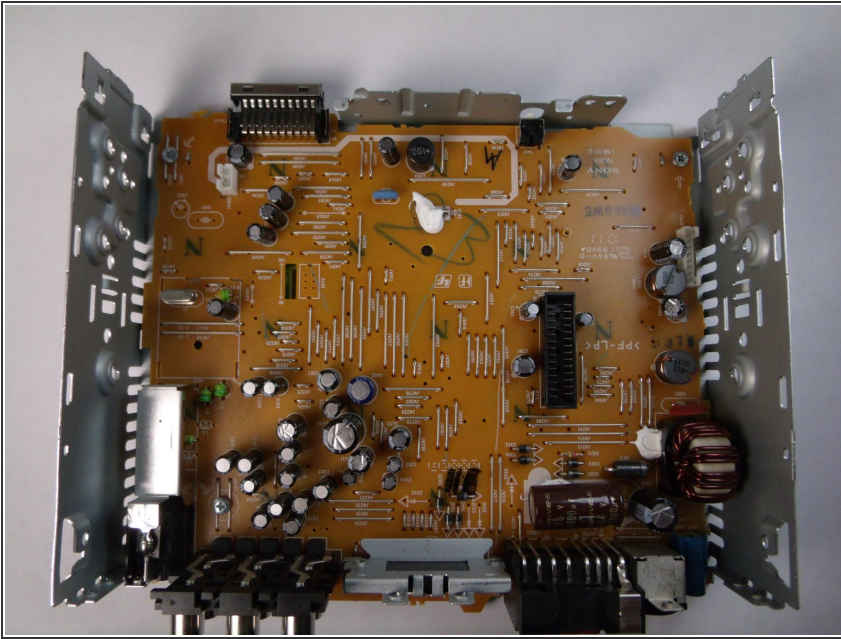
- Pull up CD drive slightly.

Step 16



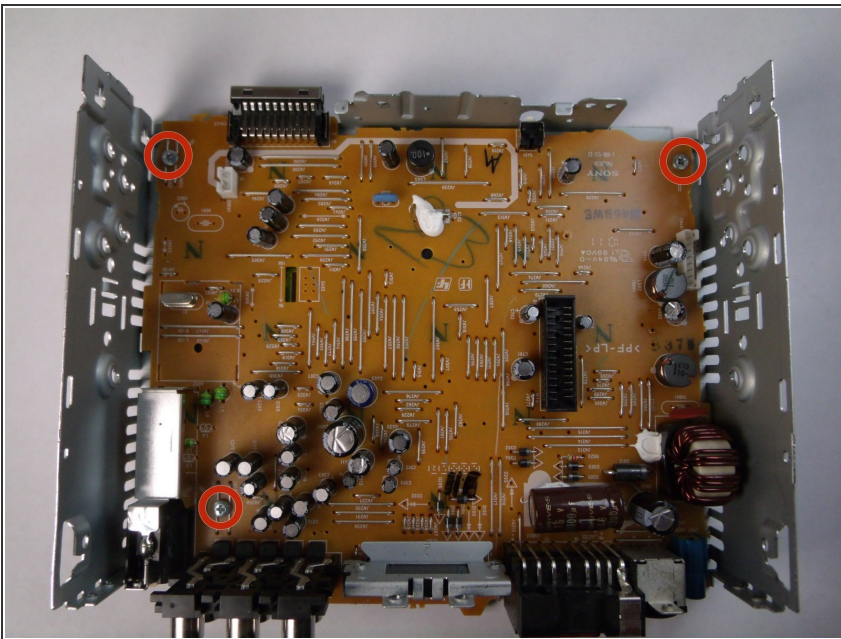
- Disconnect motherboard connection.

Step 17



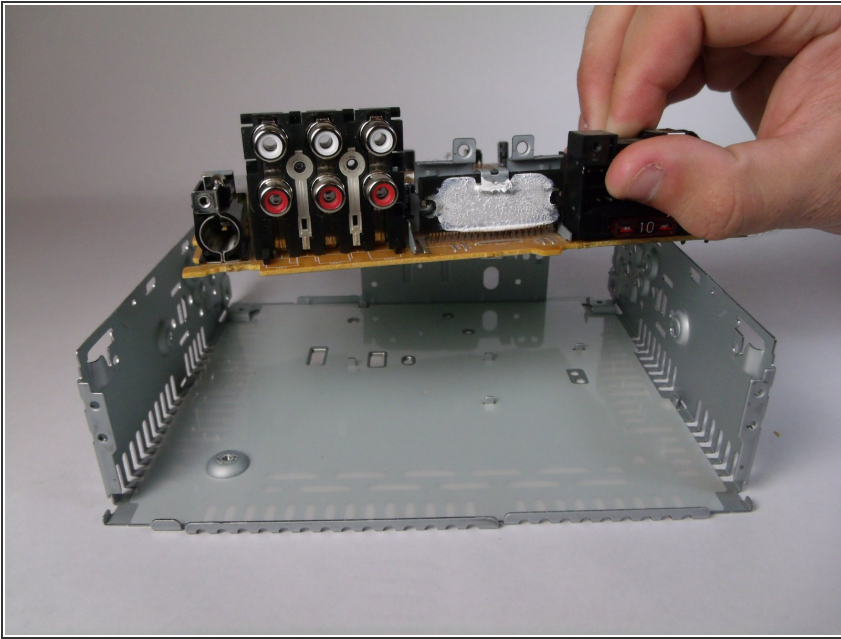
- Remove CD drive.

Step 18 — Motherboard



- Remove three 6.7mm Phillips 300 screws.

Step 19



- Pull motherboard up.

To reassemble your device, follow these instructions in reverse order.