



Sony CFD-8 Antenna Replacement

This guide provides the steps to remove and replace the antenna for the Sony CFD-8 Boombox.

Written By: Tess



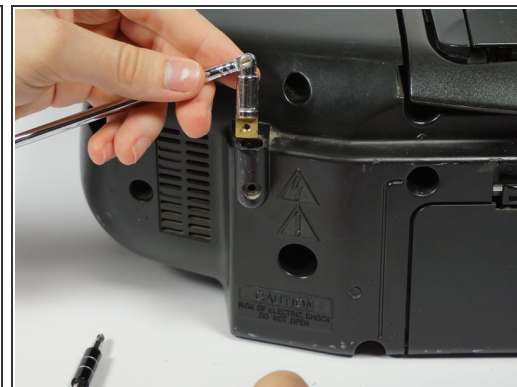
INTRODUCTION

Use this guide if your radio is not working and the antenna needs to be replaced. This is an easy part to replace and requires a standard Phillips #1 screwdriver.

TOOLS:

- [Phillips #1 Screwdriver](#) (1)
-

Step 1 — Antenna



- Unscrew the screw attaching the antenna to the boombox with a Phillips #1 screwdriver.
- ⓘ Once unscrewed, the antenna can be removed from the boombox by lifting it up and out of the hole.

To reassemble your device, follow these instructions in reverse order.