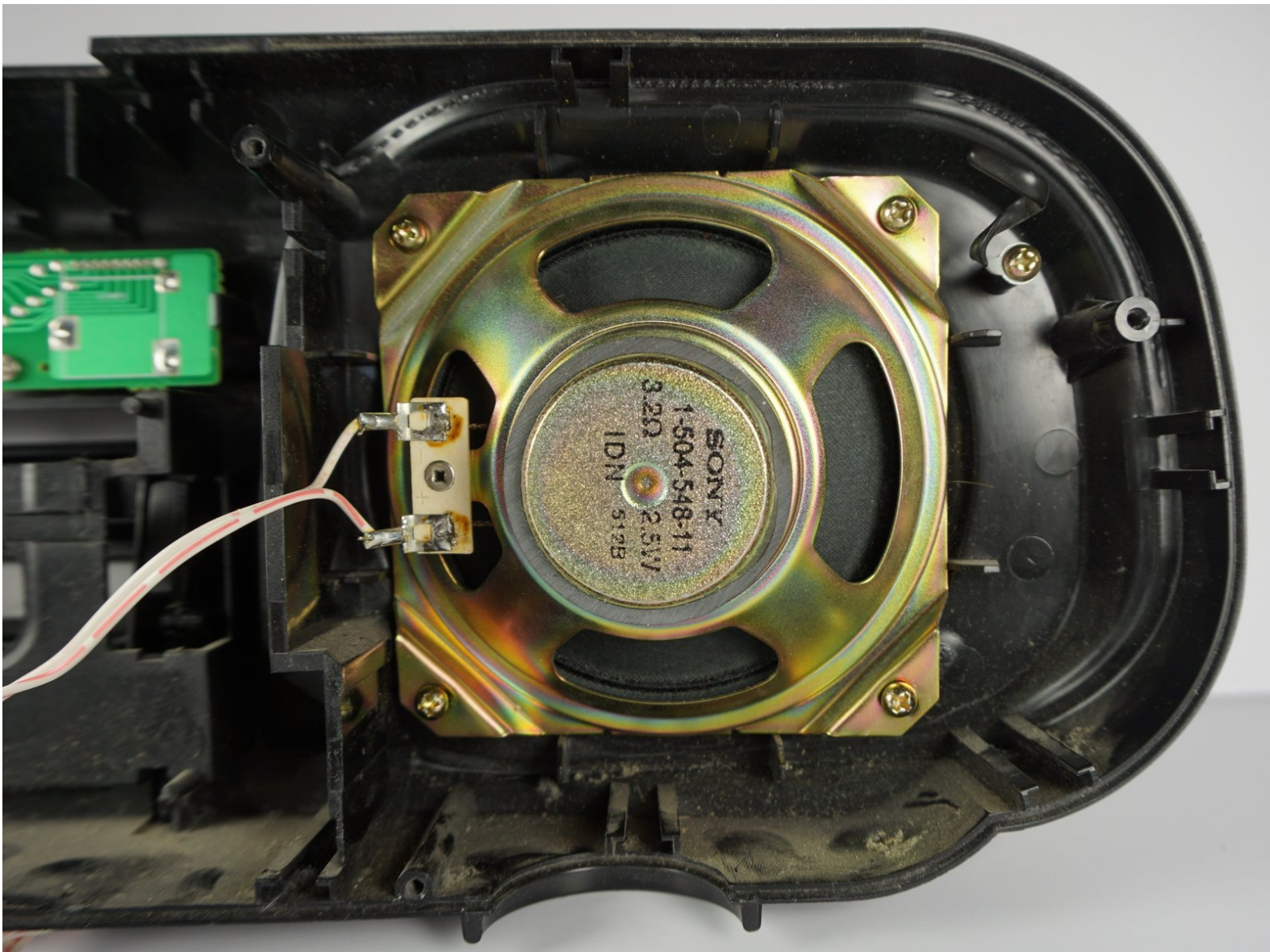




# Sony CFD-8 Speaker Replacement

Replace the speakers in your Sony CFD-8 boombox.

Written By: Liam Kirsh



---

## INTRODUCTION

Use this guide to remove and replace the speakers in the Sony CFD-8 boombox.

---



### TOOLS:

- [Flashlight](#) (1)
  - [Phillips #1 Screwdriver](#) (1)
-

## Step 1 — Front Panel



- Hold the boombox handle at an angle to access the screws behind the CD player.
- Use a Phillips #1 screwdriver to unscrew the top two 14 mm screws. You may need a flashlight to see the screws.

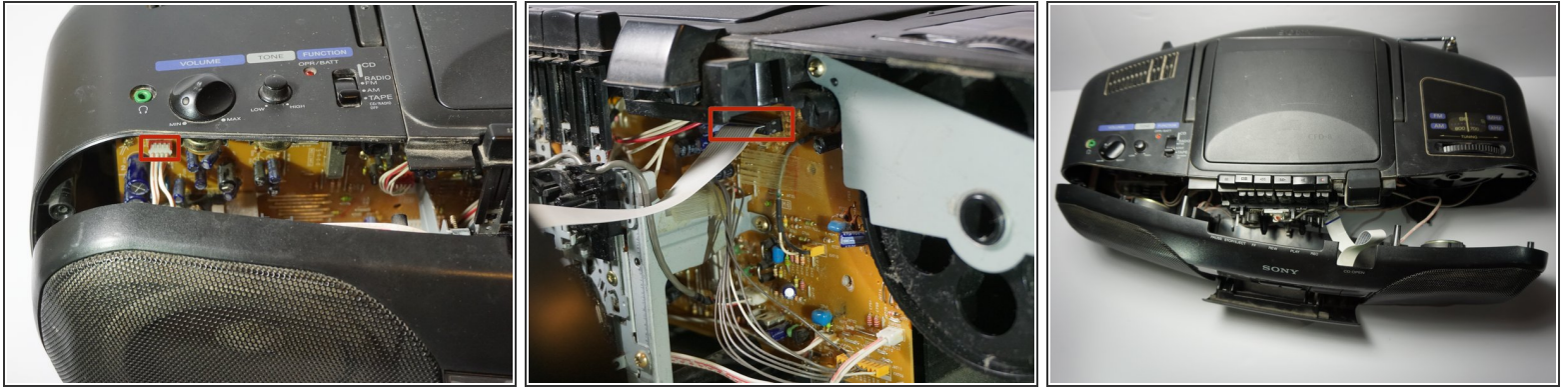
## Step 2



- Remove four 14 mm screws using a Phillips #1 screwdriver. Two of these screws are at the bottom of the boombox and the other two are on either side of the boombox as highlighted in the related images.
- All four screws have black arrows (not visible in the photo) indicating their location on the boombox.

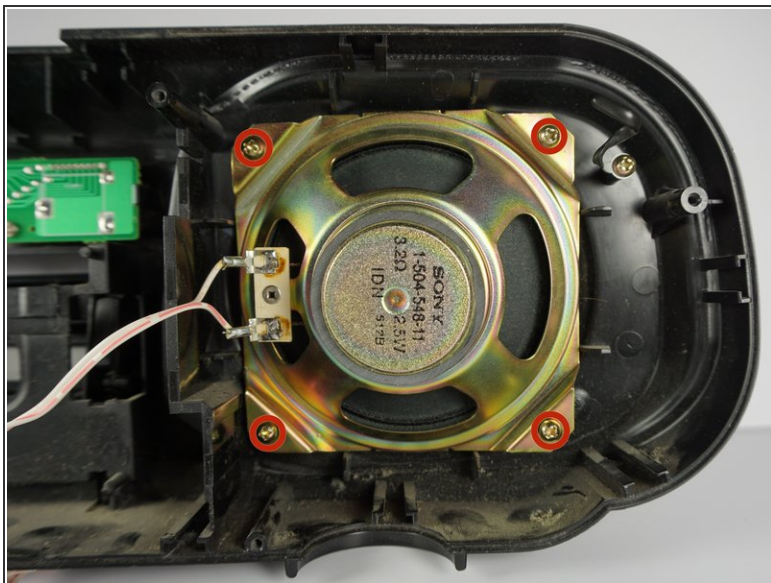


## Step 3



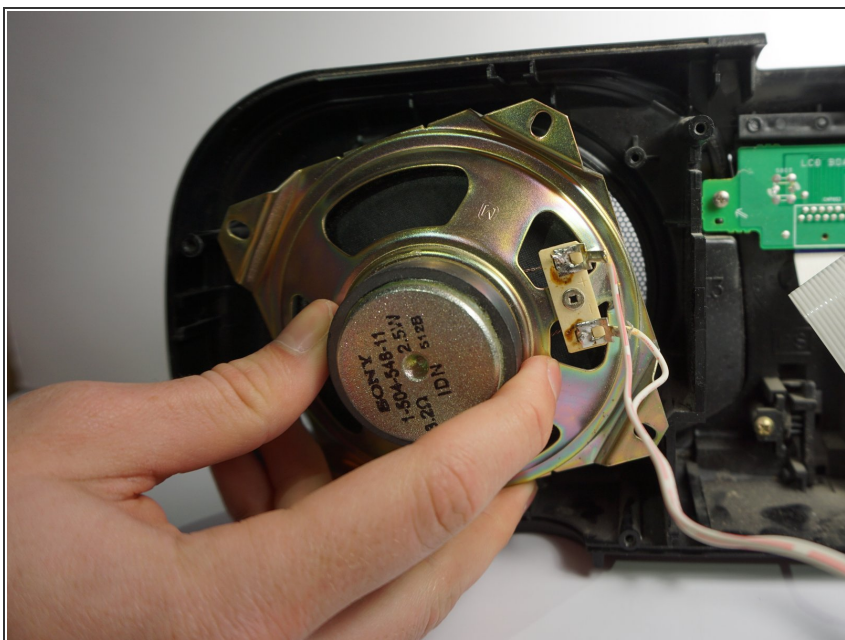
- Gently separate the front panel from the back panel.
- Remove the two connections holding the front panel to boombox.
  - One connection is located on the upper left hand side of the main circuit board.
  - The other is a large white strip slightly to the right of the cassette player.
- ⚠ Do not touch the cylindrical parts on the circuit board. These are capacitors and may deliver a shock!
- Remove the front panel.

## Step 4 — Speaker



- Use a 14cm Phillips #1 screwdriver to remove the four respective screws attaching the left and right speakers to the front panel.

## Step 5



- Remove the speakers from the front panel.

To reassemble your device, follow these instructions in reverse order.

This document was generated on 2020-03-15 02:39:00 PM (MST).

