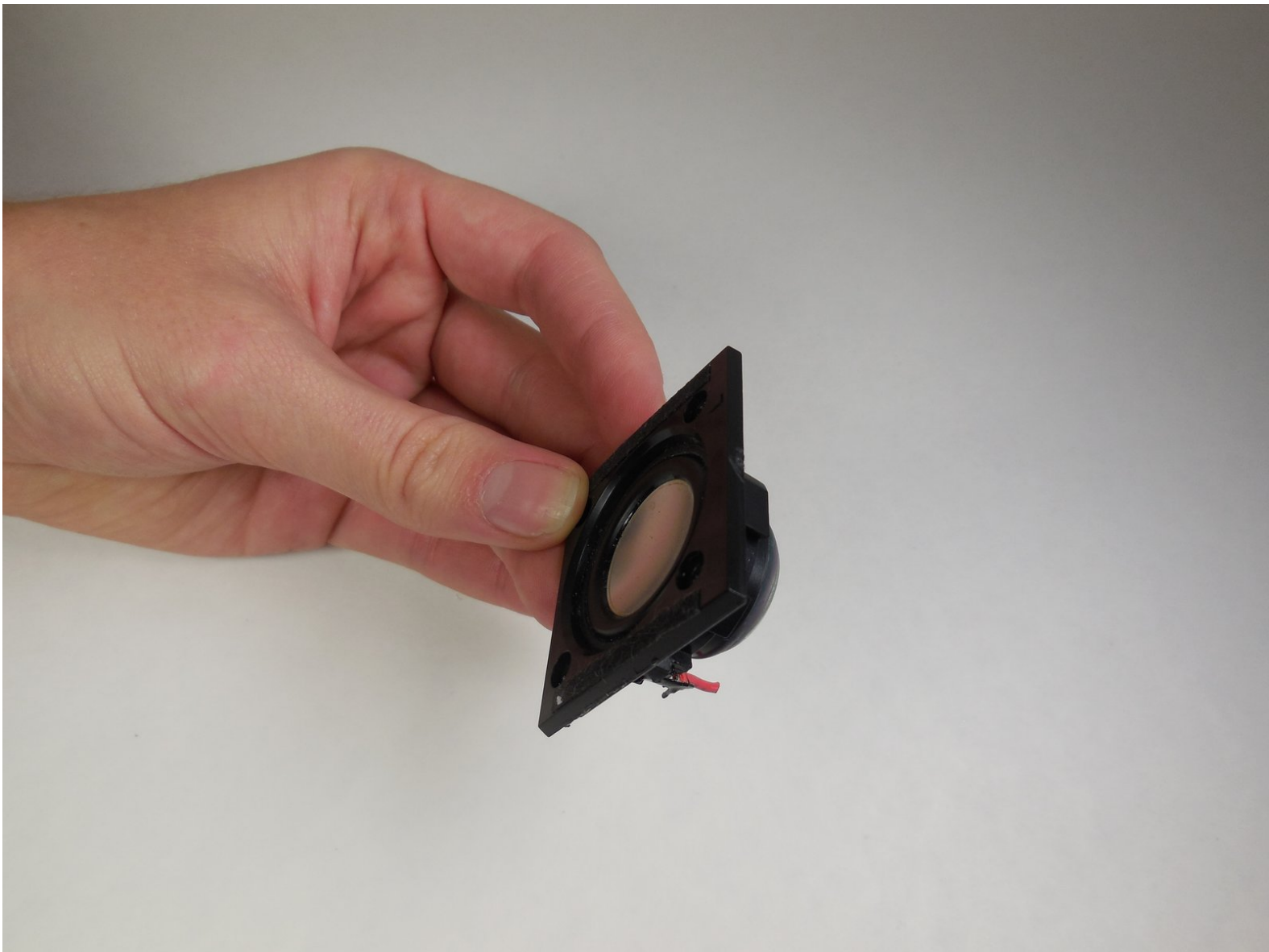




# Sony CPF-IP001 Main Speakers Replacement

This guide is used after the preliminary take down guide, it provides detailed steps on how to replace the speakers.

Written By: Marlena Perez



## INTRODUCTION

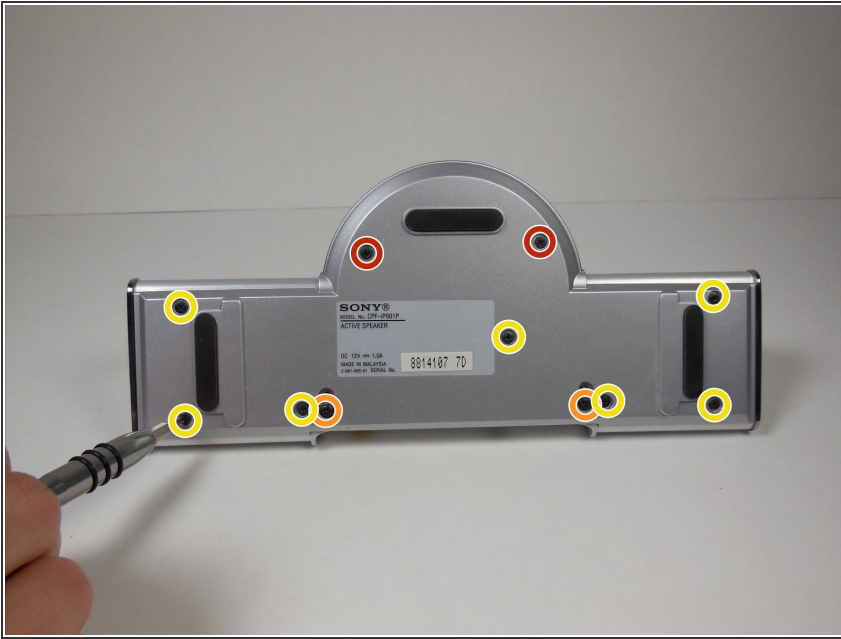
This guide will show you how to replace one of the speakers inside the speaker system. Use this if your hear muffled or disrupted sound and believe that a speaker might be blown.

---

### TOOLS:

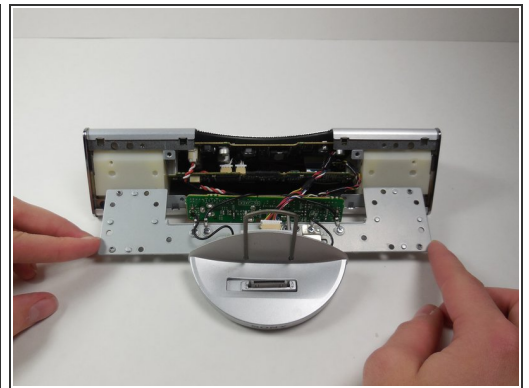
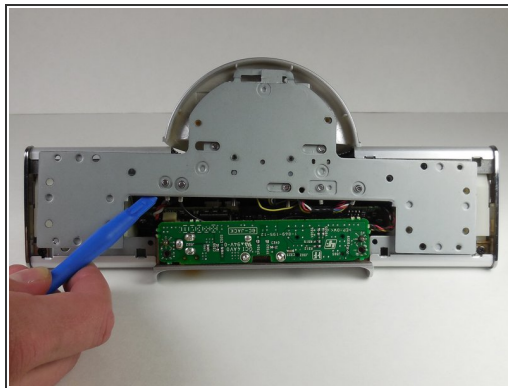
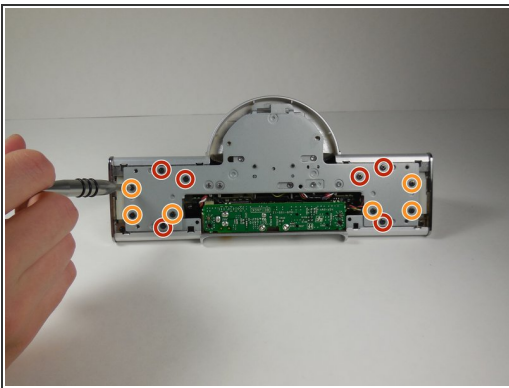
- [Phillips #0 Screwdriver](#) (1)
  - [Metal Spudger](#) (1)
  - [iFixit Opening Tools](#) (1)
  - [Tweezers](#) (1)
  - [Soldering Iron](#) (1)
-

## Step 1 — Main Speaker Housing Disassembly



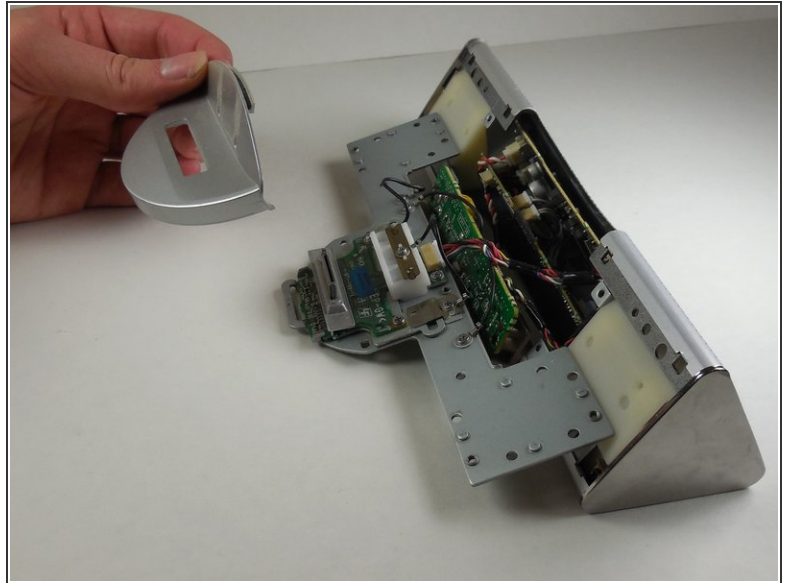
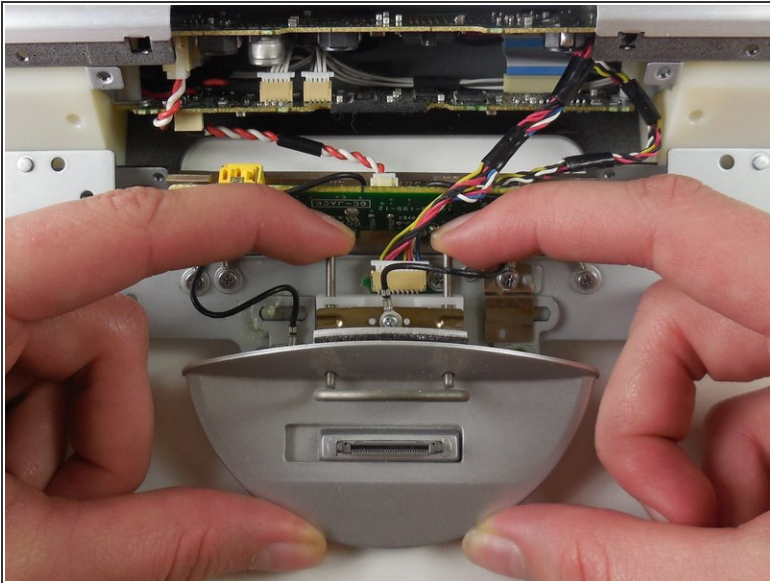
- Remove two 6mm Phillips #0 screws.
- Remove two 7.5 mm Phillips #0 screws.
- Remove seven 4 mm Phillips #0 screws.

## Step 2



- Remove six 4 mm Phillips #0 screws from the metal backing.
- Remove six 5 mm Phillips #0 screws from the metal backing.
- Using the plastic opening tool, remove the metal plate from the main speaker by gently pulling on it.

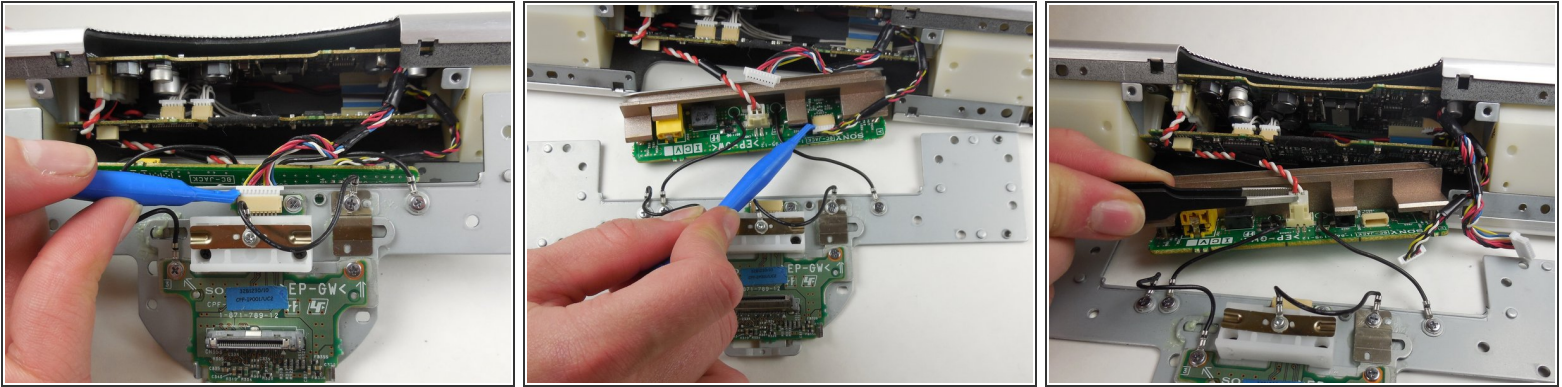
### Step 3




- Remove the plastic dock cover by using two fingers to push the attached metal piece forward and slide it out of the holes.



## Step 4

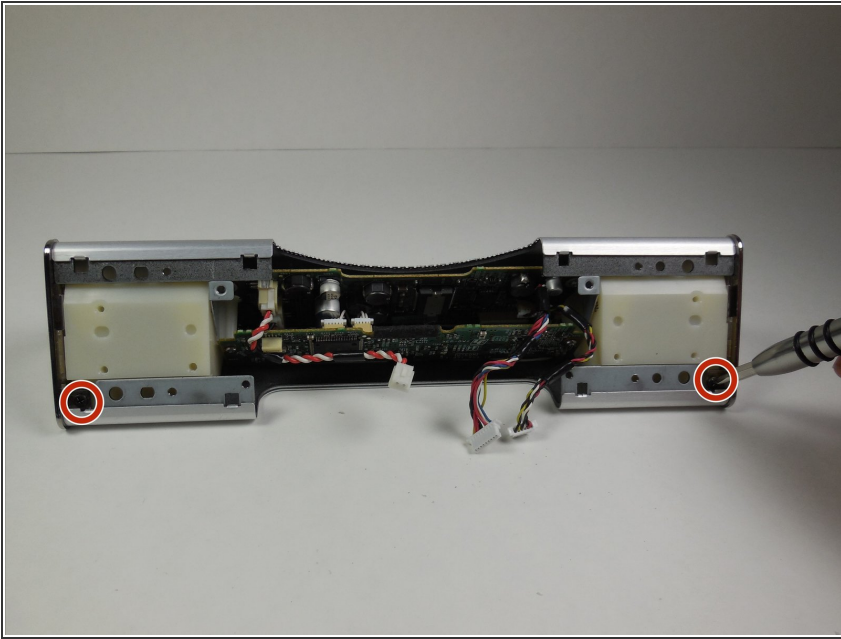


- Using the plastic opening tool, detach the wires connected to the metal plate

 When disconnecting the wires, be careful not to pull on the wires themselves. Use the plastic opening tool and the connector to disconnect it.

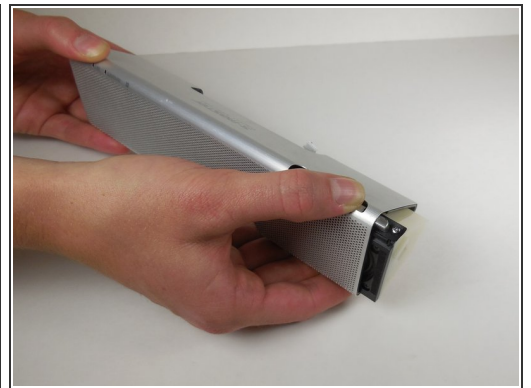
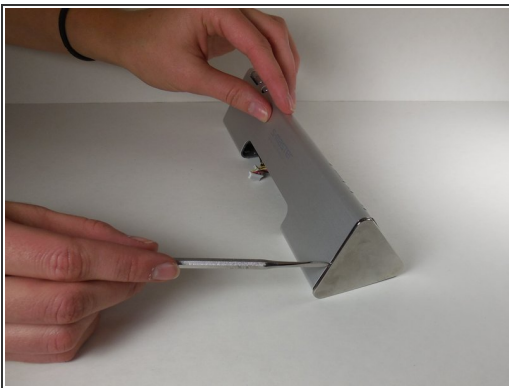
- Use the plastic opening tool to remove wires connected to the circuit board on the far right.
- Use the tweezers to remove wires connected to the circuit board in between the two black wires.
  - Use the tweezers to press the release tab on the front and back of the plastic white wire head.
  - Once the tab is pressed on both sides, lift up to slide wire head out of socket.

## Step 5



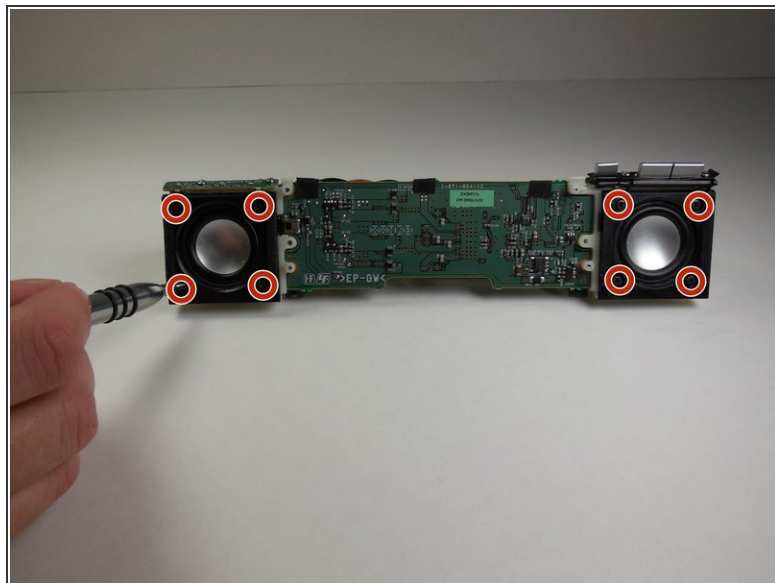
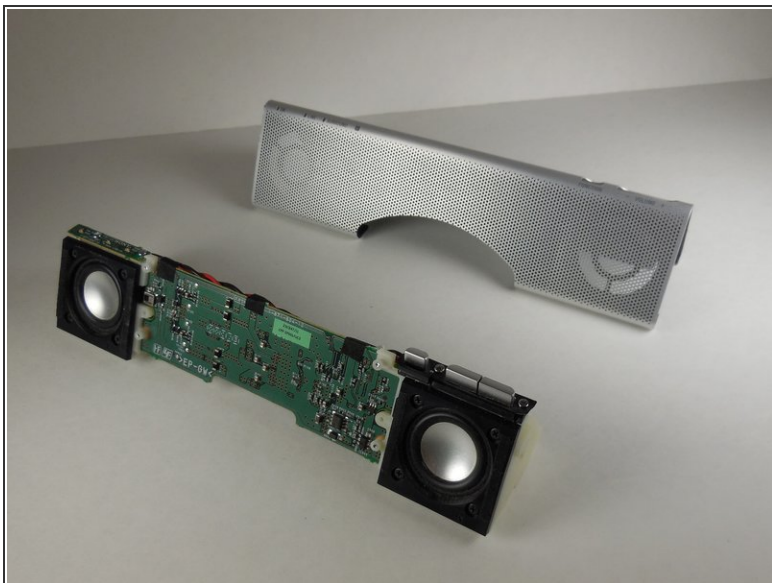
- Remove two 5 mm Phillips #0 screws.

## Step 6



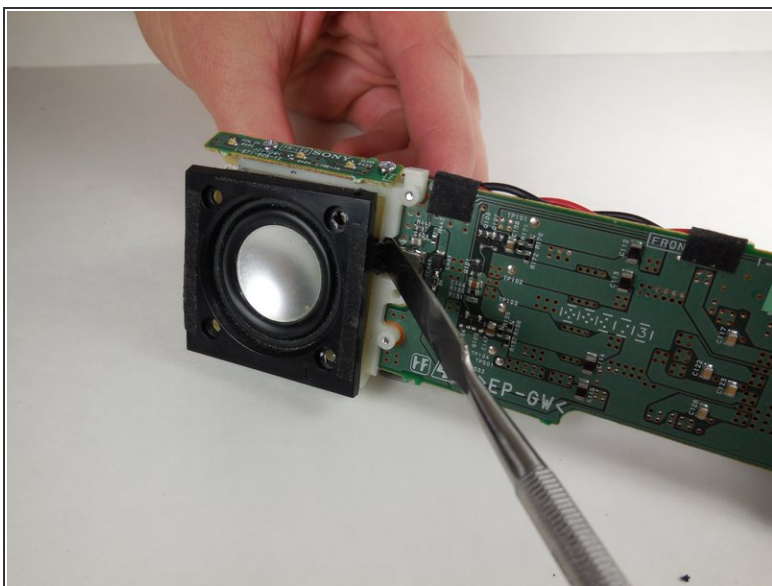
- Using the metal spudger, loosen the metal cap at the end of the speaker.
- Slide down the loosened cap to remove it from the end of the speaker.
- Simultaneously push down on the buttons and slide the speaker out from the casing.

## Step 7 — Main Speakers



- Remove eight 5 mm Phillips #0 screws.

## Step 8



- Gently pry the speaker out from the housing using the metal spudger.
- Use wire cutters to cut the red and black wires, or desolder the speaker wires to remove the speaker. See iFixit's guide on [How To Solder and Desolder Connections](#).

To reassemble your device, follow these instructions in reverse order.