



# Sony CPF-IP001 Power Cord Replacement

This shows how to replace the power cord if it is broken or fried.

Written By: Mike Bolton



## INTRODUCTION

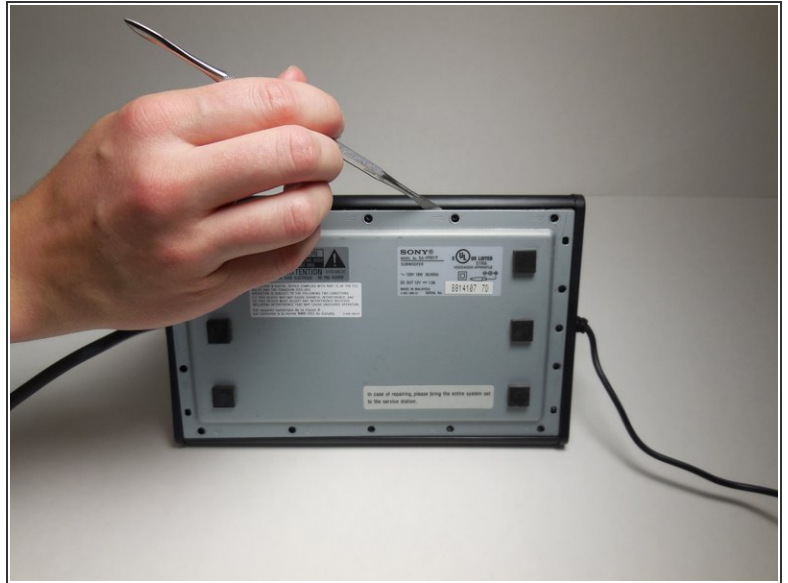
Use this guide if the speakers do not turn on and you think it is because the power cord in the subwoofer is broken.



### TOOLS:

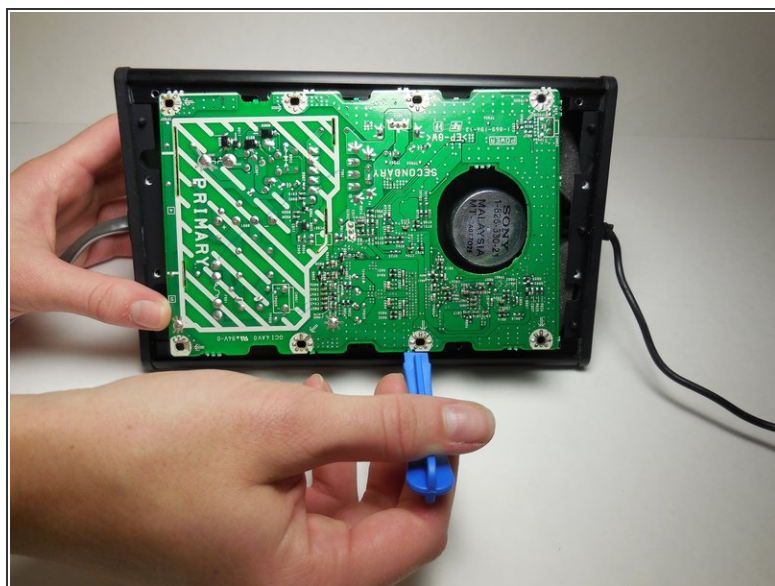
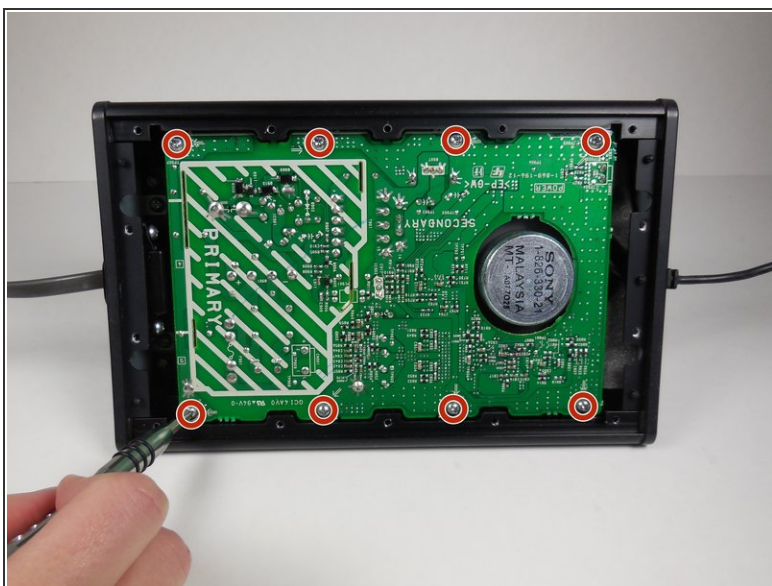
- [Phillips #2 Screwdriver](#) (1)
  - [Metal Spudger](#) (1)
  - [iFixit Opening Tools](#) (1)
  - [Tweezers](#) (1)
-

## Step 1 — Subwoofer Housing Disassembly



- Remove fourteen 8 mm Phillips #2 screws from the bottom of the subwoofer.
- Once all of the screws are removed, the cover can be taken off using a metal spudger.

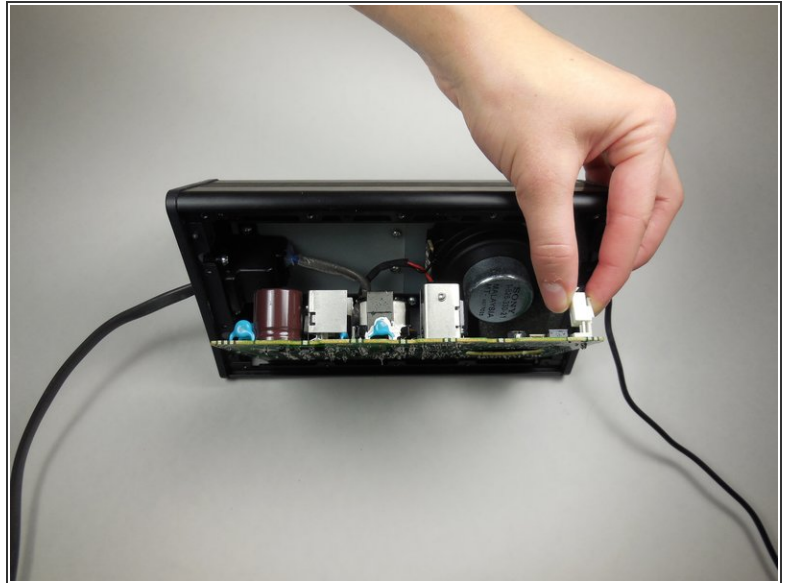
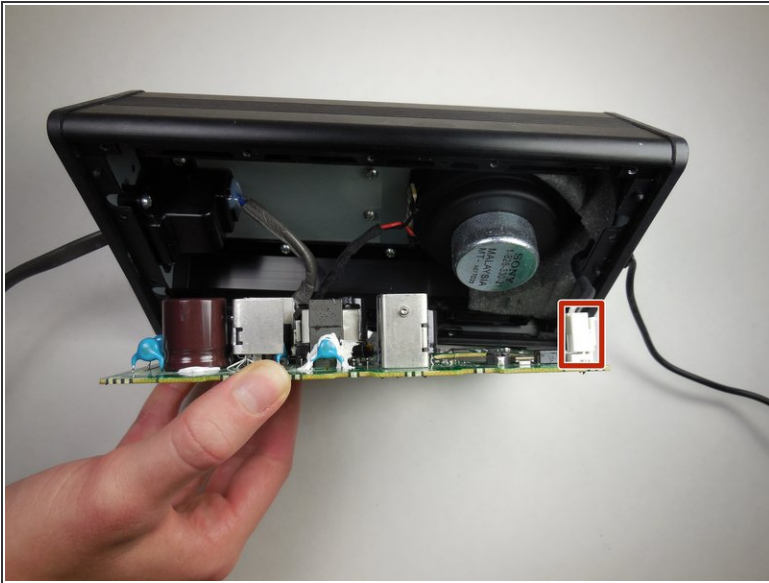
## Step 2



- Remove eight 14 mm Phillips #2 screws holding the circuit board in place.
  - Using the plastic opening tool, carefully remove the circuit board.
- ⚠ There will be 3 wires connected to the opposite side of the circuit board. Be careful not to pull the board out of the device too far and damage these wires.

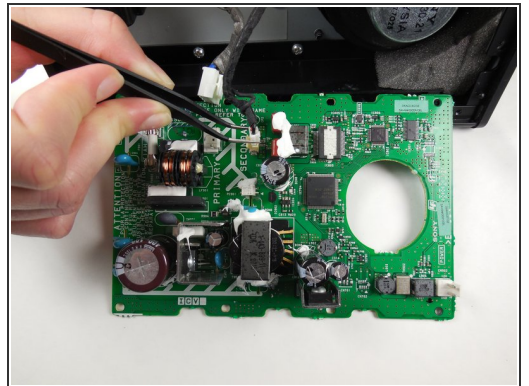
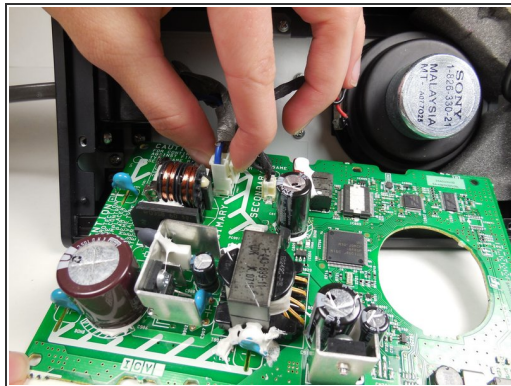
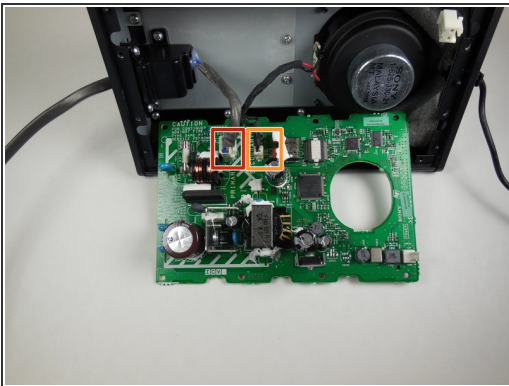


## Step 3



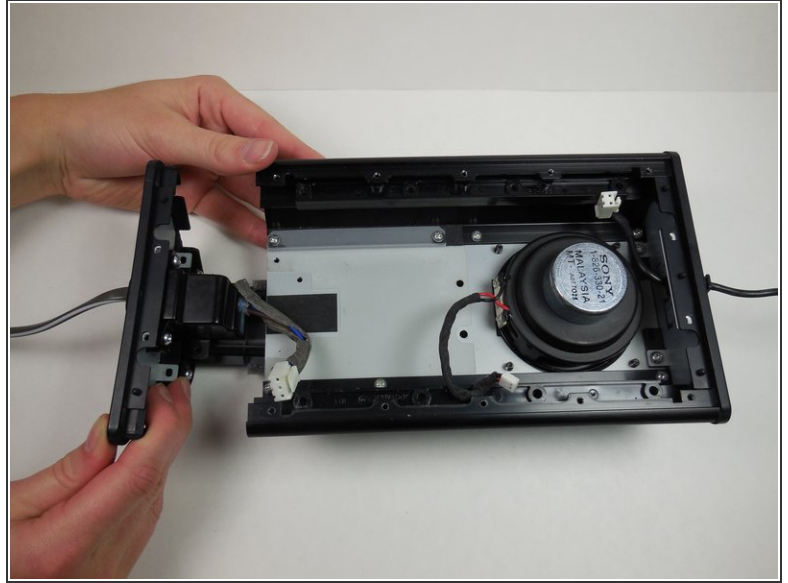
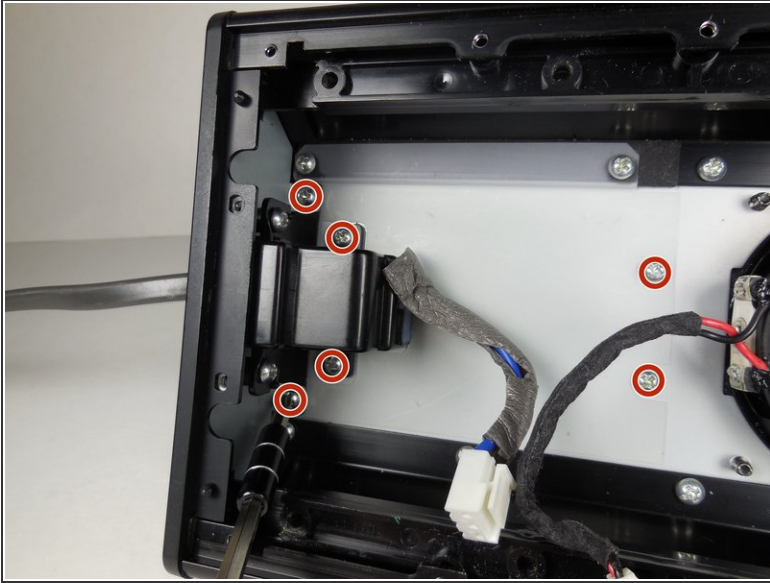
- Remove the first of the three wires by squeezing the clip and pulling it out.
- ❗ After disconnecting the first wire, the two attached wires can be more easily accessed.

## Step 4



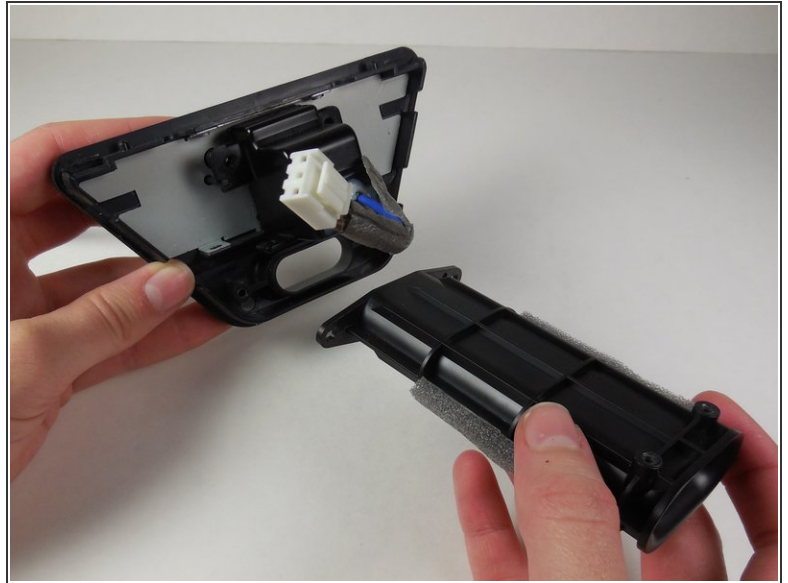
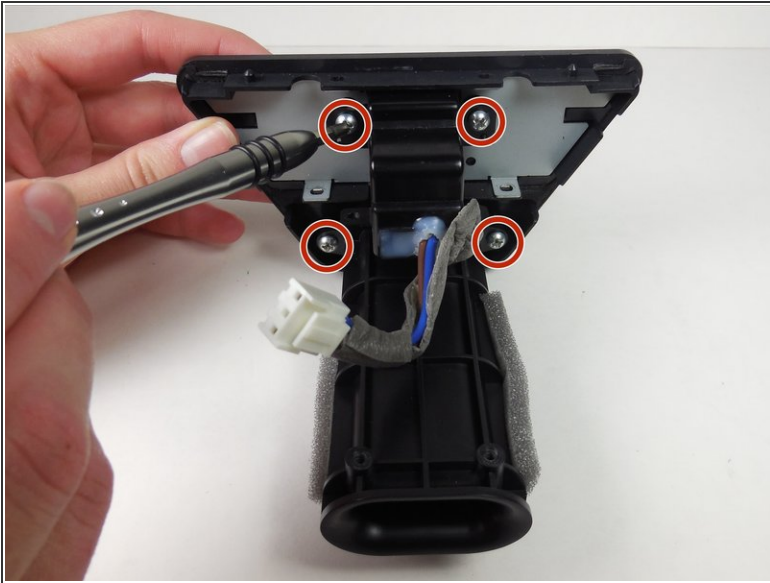
- Remove the wire furthest to the left by squeezing the clip and pulling it out.
- Detach the third wire by carefully using the tweezers.
- The circuit board is now completely detached and can be set aside.

## Step 5



- Remove six 8 mm Phillips #2 screws.
- Slide the side panel with the power cord out from the housing.
- ⓘ The side panel with the power cord will come out as a whole unit with the subwoofer air tunnel.

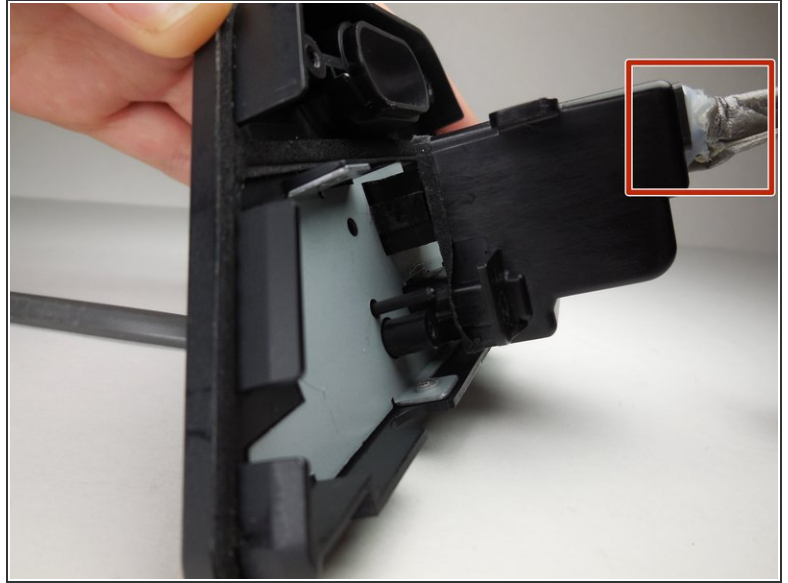
## Step 6 — Power Cord



- Remove four 8 mm Phillips #2 screws.
- Detach the air tube from the side panel.

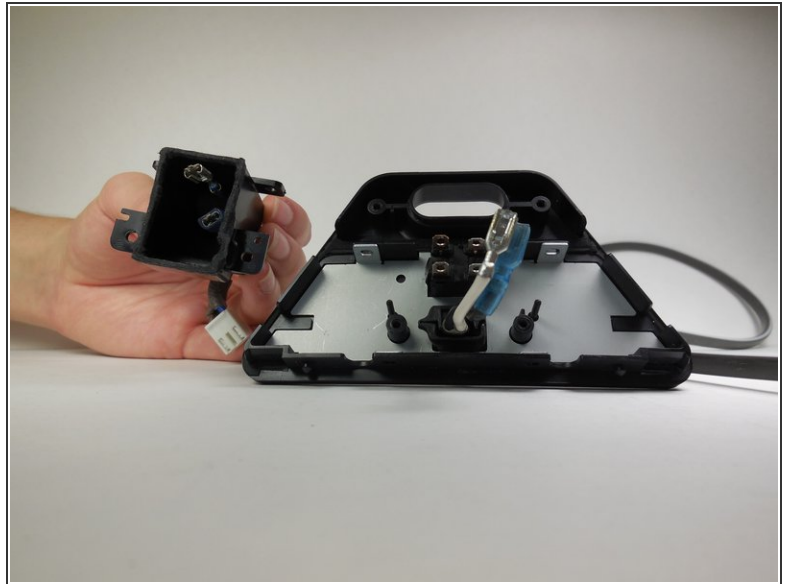
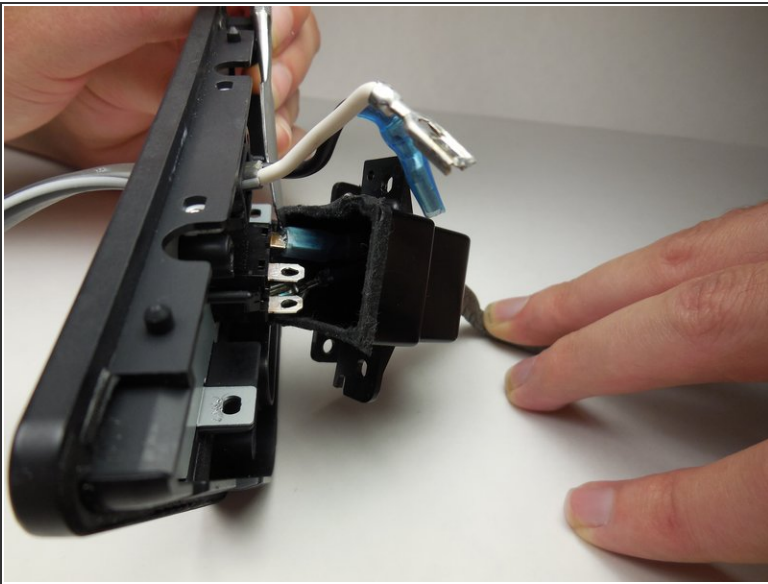


## Step 7



- Begin to pry the power cord cover unit from the side panel using a metal spudger.
- Feed the wires that come out of the side panel through the glue and into the power cord cover unit to get the cover farther away from the side panel.

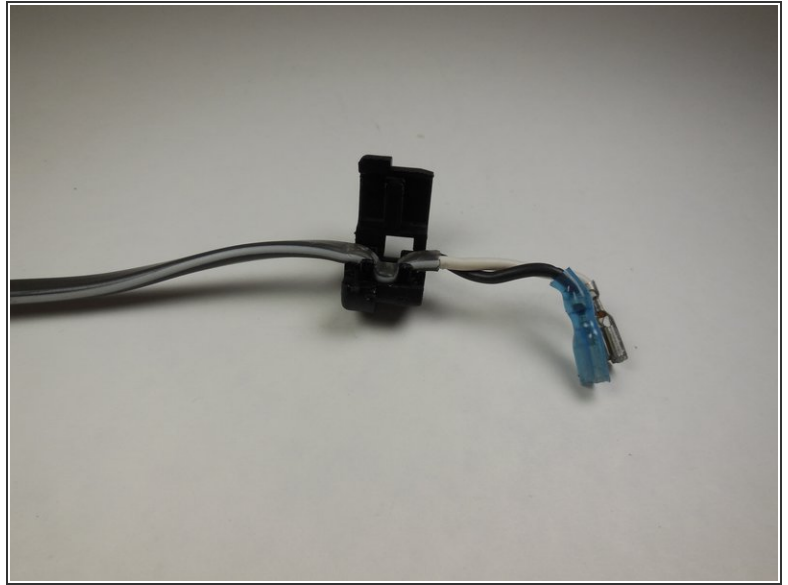
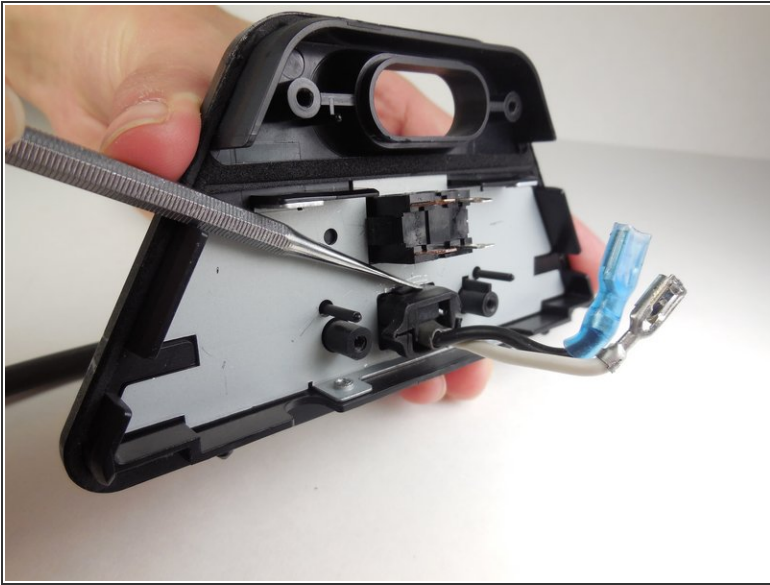
## Step 8



- Using a metal spudger, disconnect the four spade connectors that are connected to the power button and the power cord.



## Step 9



- Using a metal spudger, press the tab on top of the power cord and push the power cord through the side panel.
- Once through, the clip connected to the power cord will open up and a new power cord can be put in place.

To reassemble your device, follow these instructions in reverse order.