



# Sony Cassete Deck TC KE200 Fix

Fix problem cant play cassette. Replace internal belts.

Written By: Cafony

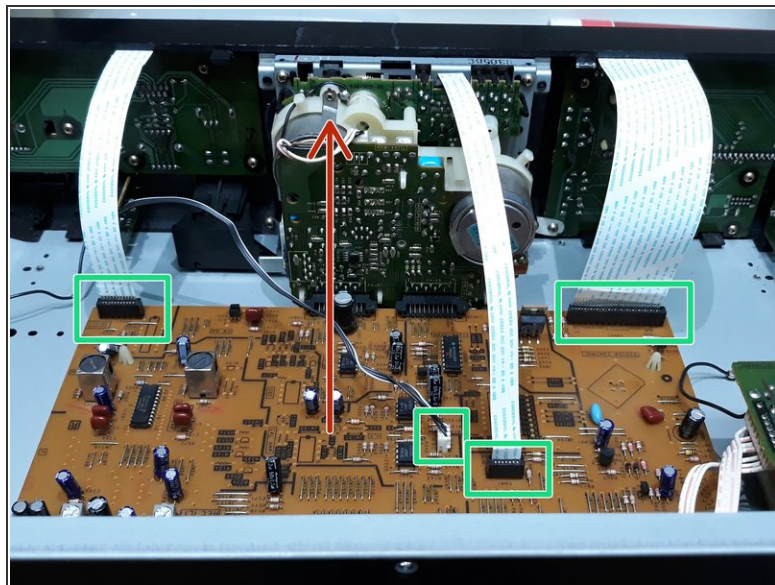
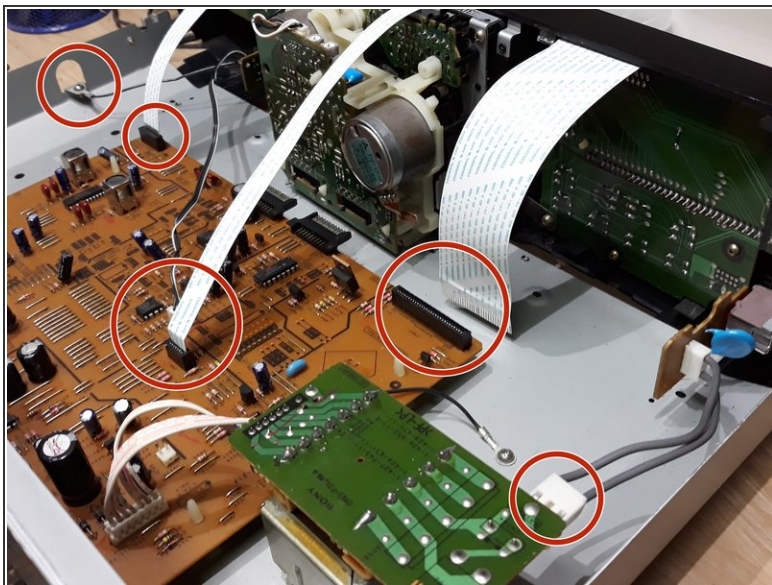


## Step 1 — Motor belt



- Remove screws from down
- Remove screws from sides
- Gently take out the from of deck from metal base.

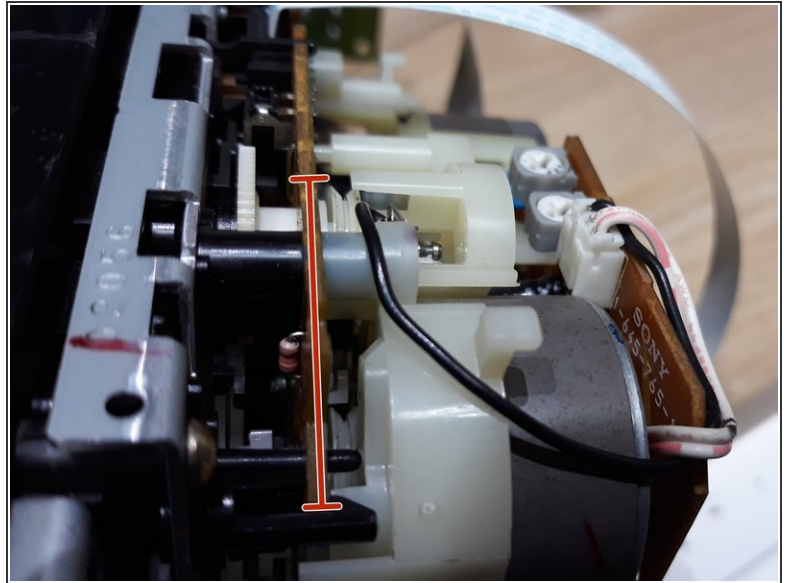
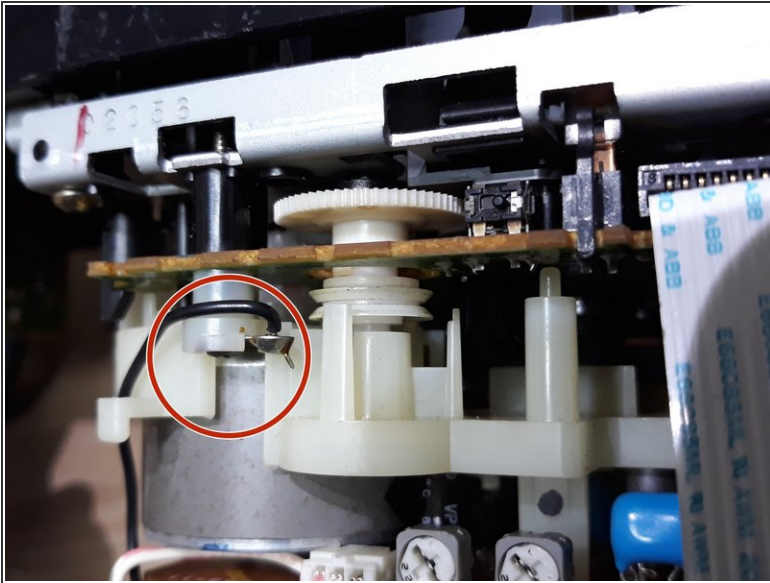
## Step 2



- Remove left side black wire
- Remove white contact strips
- Remove little screw to change ruble inside deck mechanims
- Remove power supply grey wires

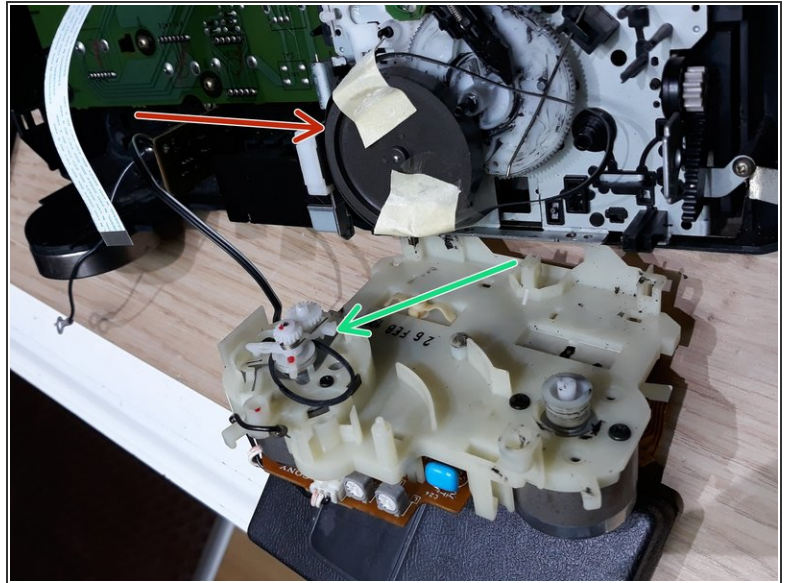
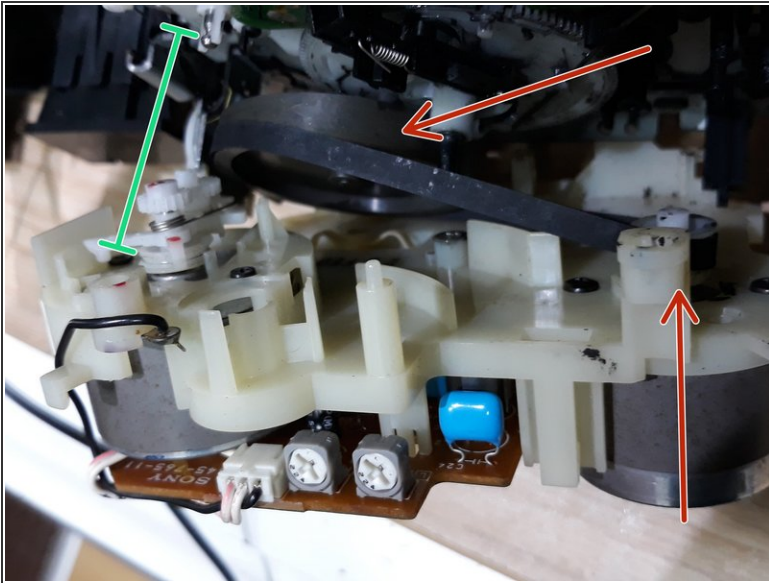


### Step 3



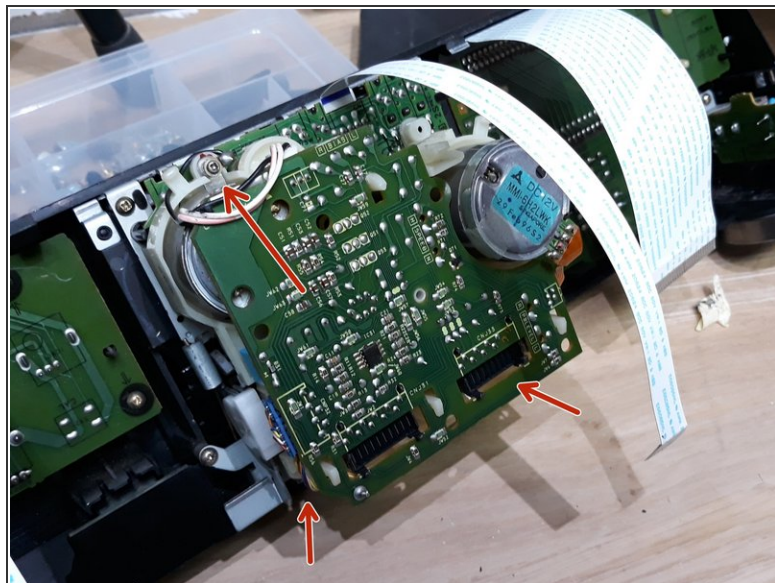
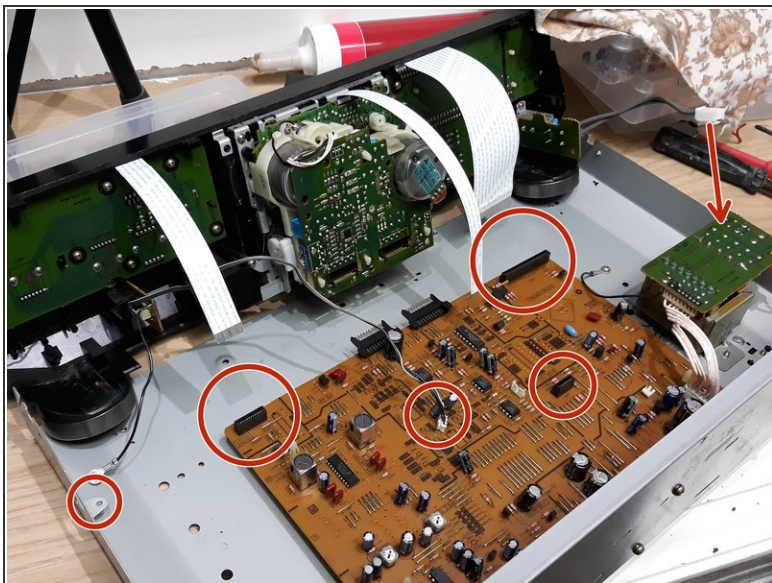
- Remove the small screw
- Then you can see the place of the wheel. Change the rubber.

## Step 4



- Replace the big belt.
- Replace the small (green) belt.
- Use a little tape to hold the belt. When closing remove the tape.

## Step 5



- Insert little screw and close the deck with new belts.
- Plug all the wires and strips.
- Close everything, and your done
- Hope it help, please leave a comment.

To reassemble your device, follow these instructions in reverse order