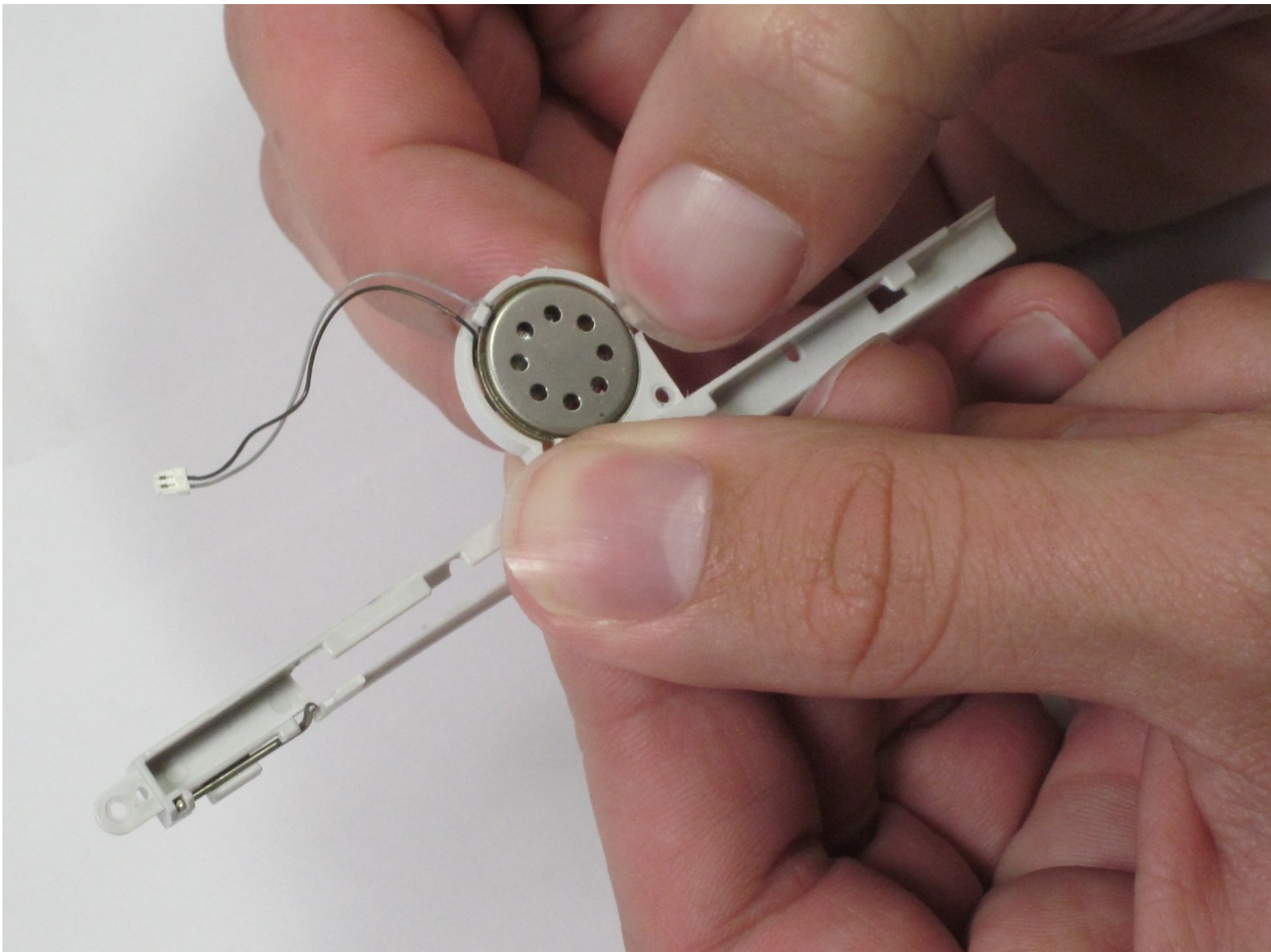




Sony Clie PEG-NR70 Speaker Replacement

Install a new speaker in your Sony Clie.

Written By: Daniel Soski



INTRODUCTION

Installing a new speaker fairly simple as it only involves opening the device casing and then removing the broken speaker.



TOOLS:

- [Phillips #00 Screwdriver](#) (1)
 - [Tweezers](#) (1)
-

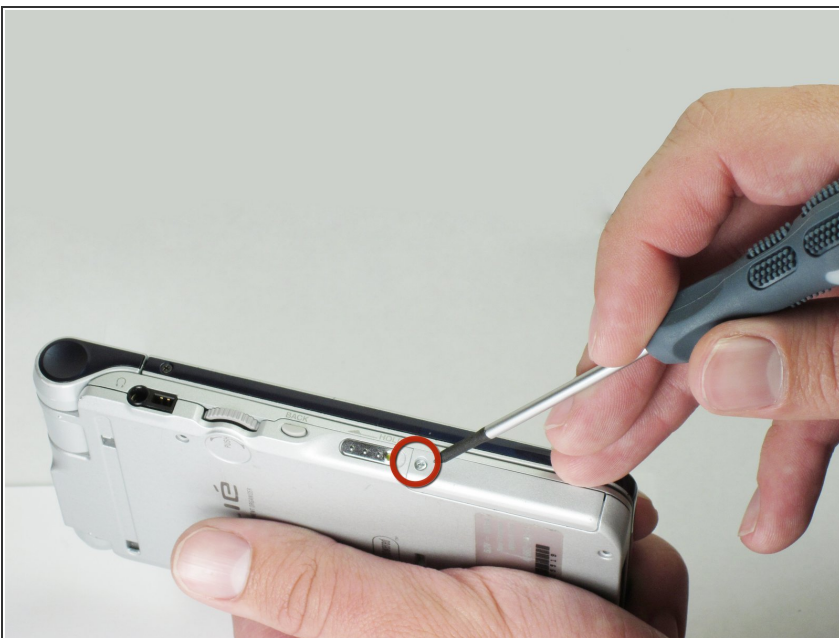
Step 1 — The Case



- Unscrew the 1.9mm screw located at the top of the device with a Phillips #00 screwdriver.

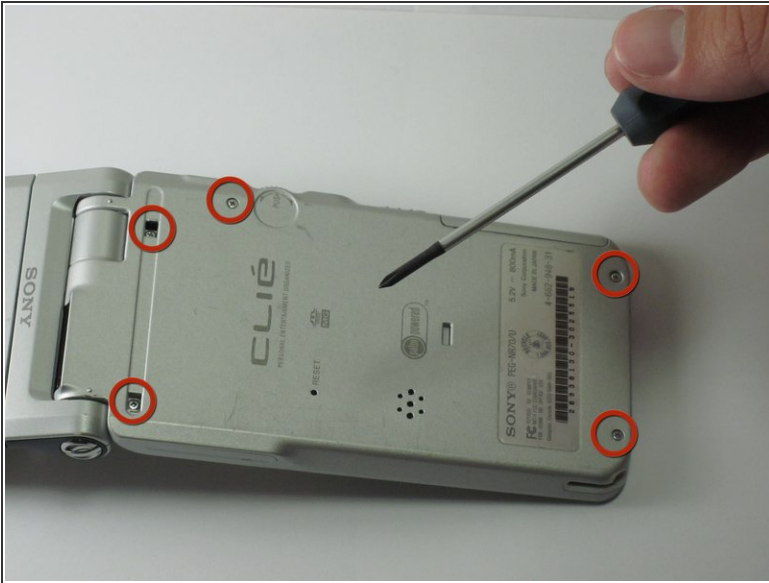
i It may be helpful to set up a piece of paper to keep track of where removed screws came from.

Step 2



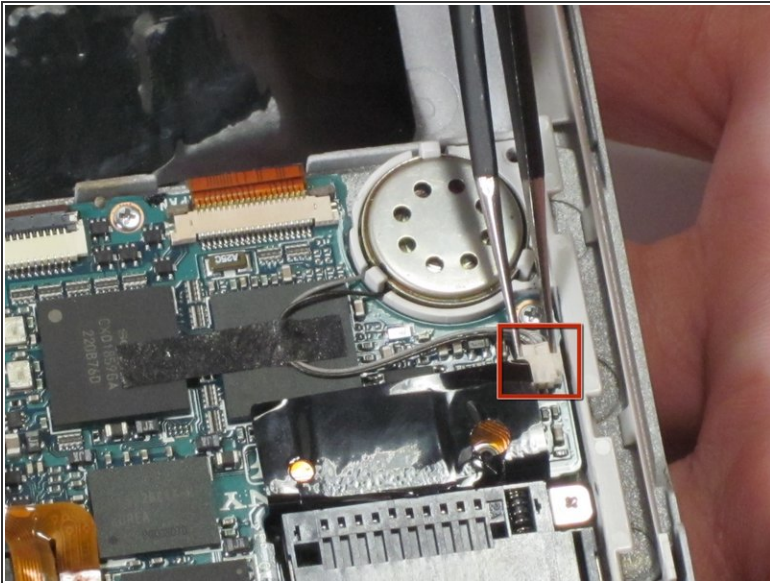
- Unscrew the 2.5mm screw located on the left side of the device with a Phillips #00 screwdriver.

Step 3



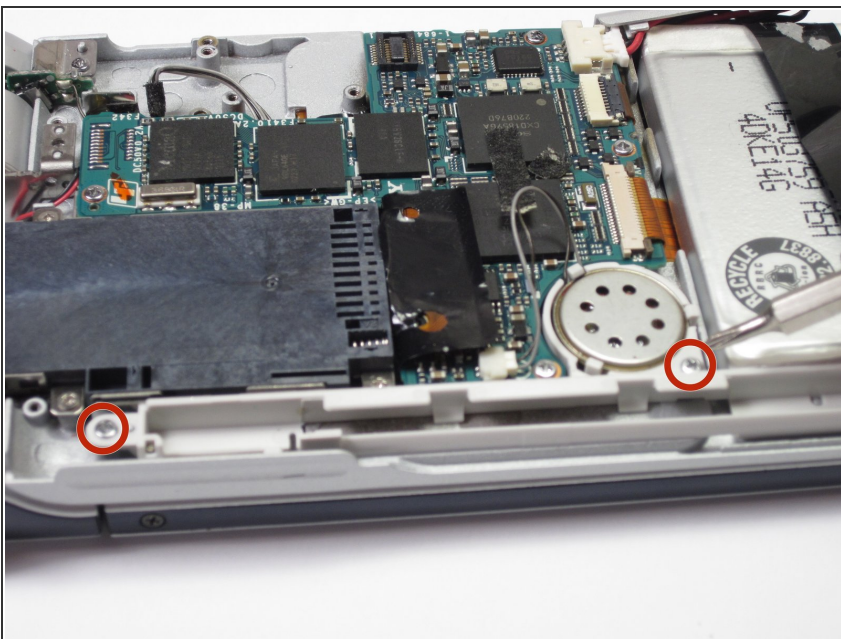
- Unscrew the five 2.5mm screws on the back panel with a Phillips #00 screwdriver.
- Remove the back panel by lifting it away with your hands.

Step 4 — Speaker Rail



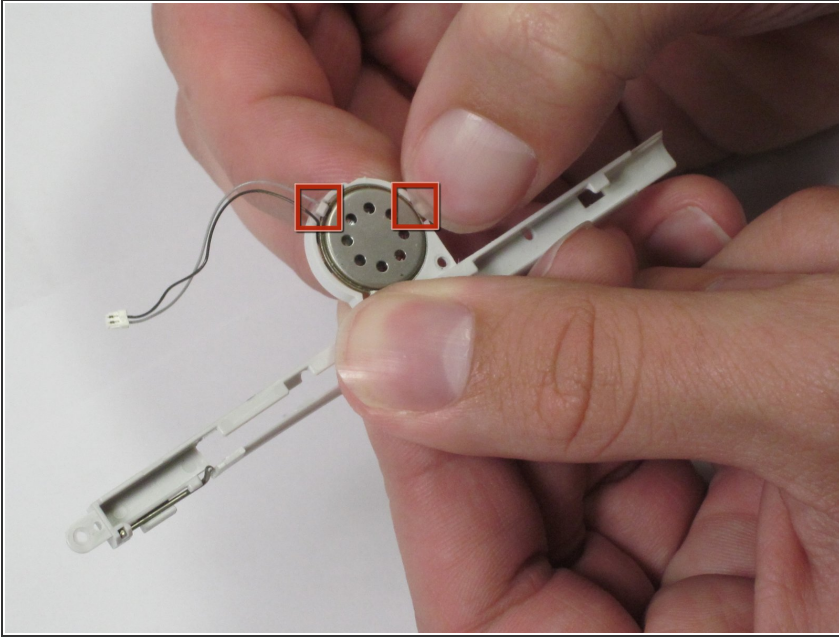
- Use tweezers to unplug the speaker wire from the motherboard by pulling the plug (not the wires) down towards the speaker.
- ⚠ Be careful not to tear the speaker wires! They are very thin.
- Remove the tape holding speaker wire by peeling it away.

Step 5



- Holding down the speaker rail unscrew the two 2.5mm screws with a Phillips #00 screwdriver.
- Remove the speaker rail vertically from the device.

Step 6 — Speaker



- Hold back the plastic tabs to pop the speaker out of the rail.

To reassemble your device, follow these instructions in reverse order.