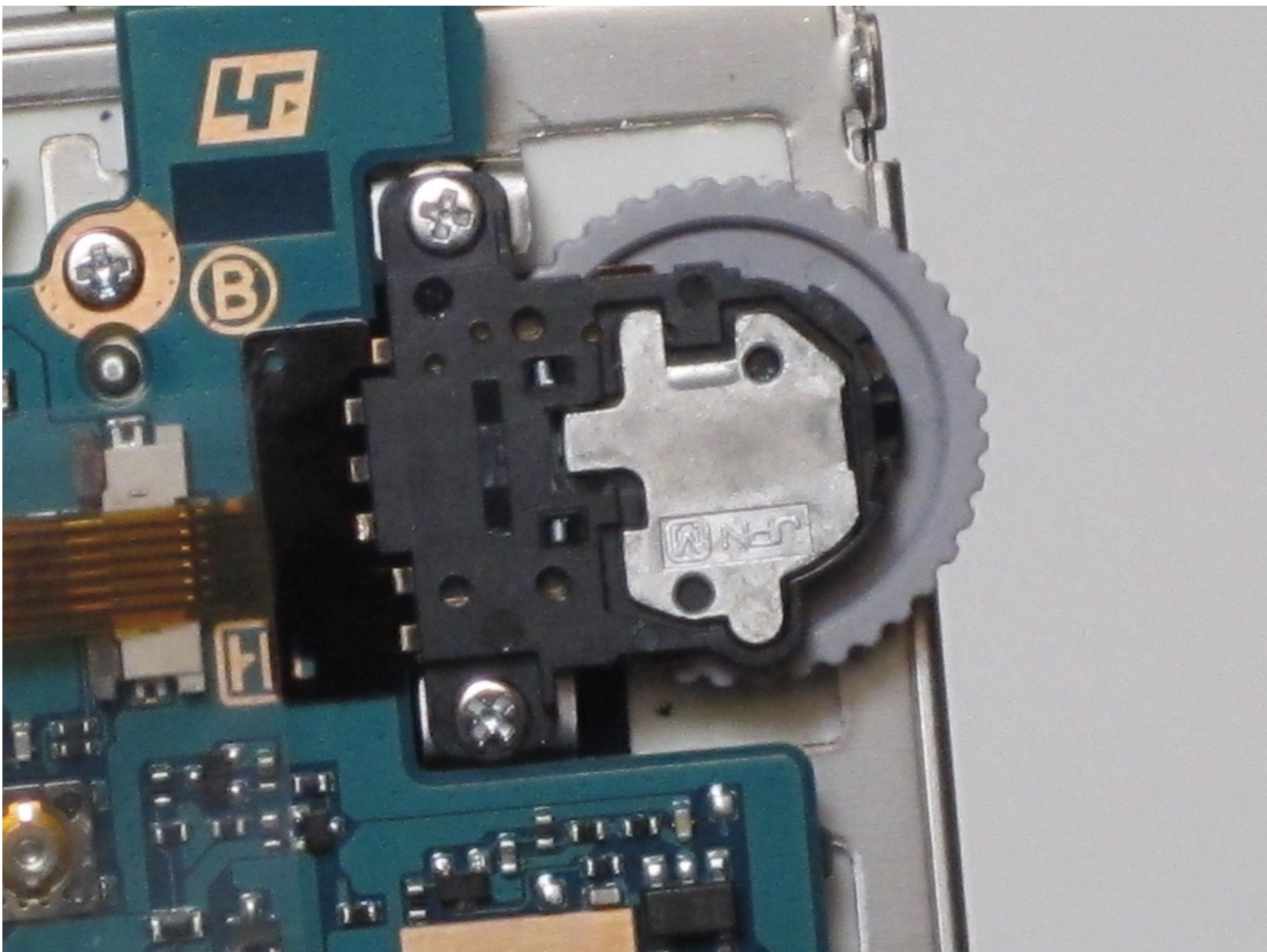




Sony Clie PEG-SL10 Scroll Wheel Replacement

This guide will show you how to remove the scroll wheel and replace it with a new one on the Sony Clie PEG-SL10.

Written By: Emily





TOOLS:

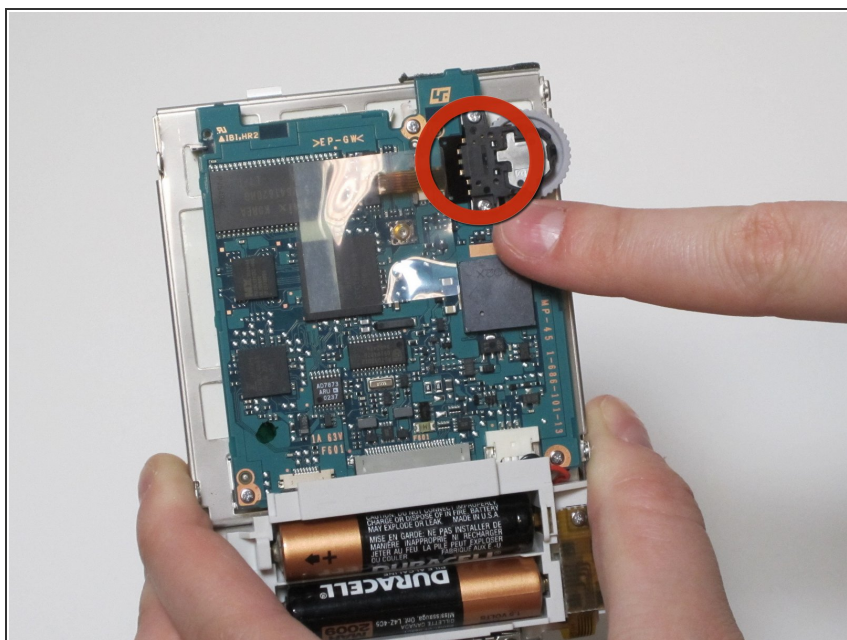
- [Phillips #0 Screwdriver](#) (1)
-

Step 1 — Scroll Wheel



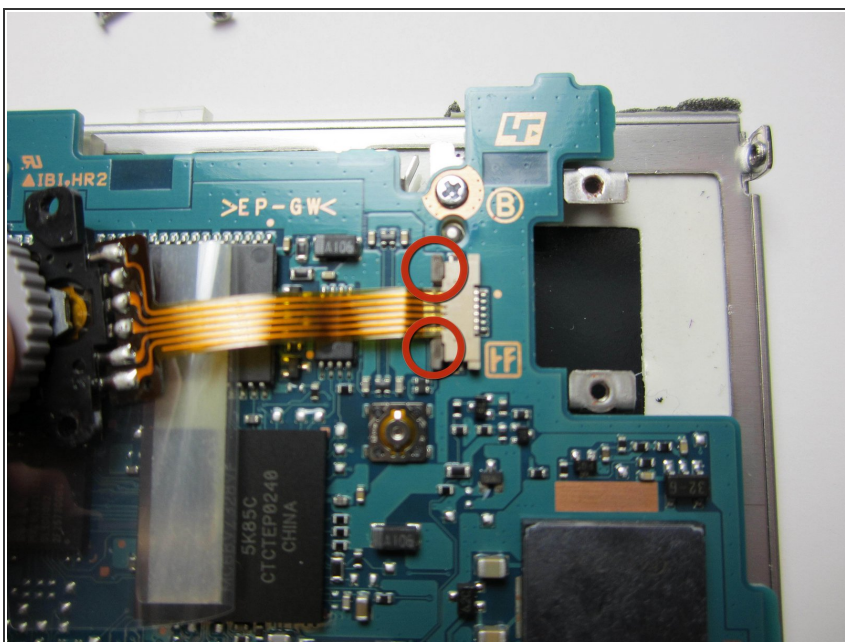
- Remove the six screws holding the outer case of the Sony Clie.

Step 2



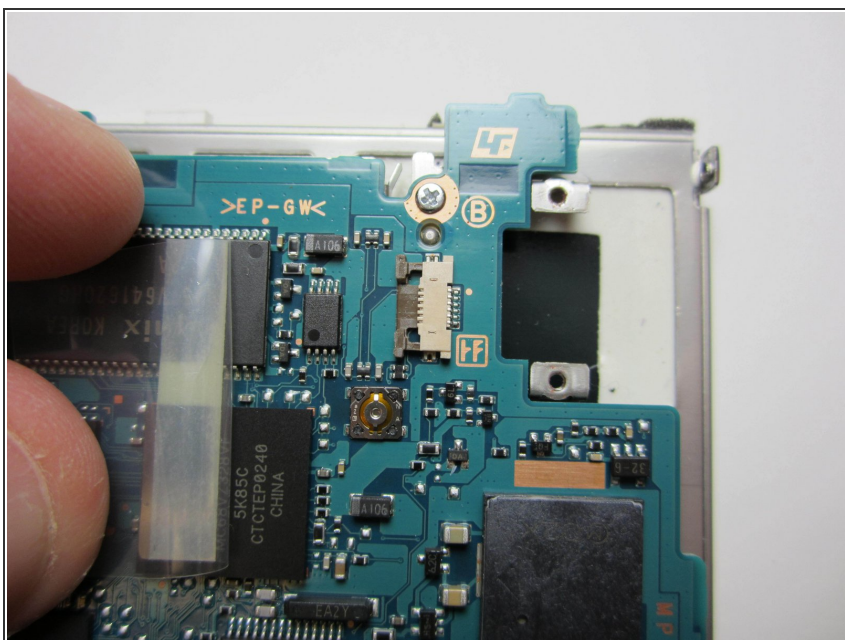
- Remove the two screws holding the scroll wheel.

Step 3



- Pull the two plastic tabs away from the motherboard.

Step 4



- Remove the scroll wheel from the device.

To reassemble your device, follow these instructions in reverse order.