



# Sony Clie PEG-T615C Battery Replacement

How to replace a Sony Clie PEG-T615C battery.

Written By: Rob



---

## INTRODUCTION

This article will teach the user how to remove an old battery from a Sony Clie PEG-T615C with short and easy-to-follow steps.



### TOOLS:

- [Phillips #00 Screwdriver](#) (1)
-

## Step 1 — Battery



- Remove two screws from the thumb dial panel on the back of the device.

## Step 2



- Remove one screw from the upper right corner on the back of the device.



### Step 3



- Remove one screw from the thumb dial panel on the right side of the device.

### Step 4



- Remove one screw from lower right side of the device.

## Step 5



- Remove one screw from the lower left side of the device.

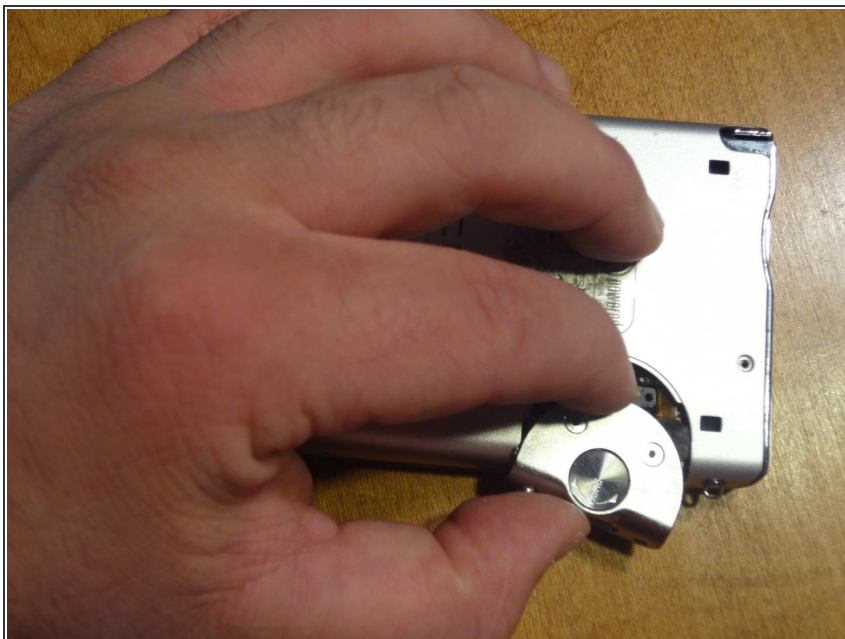
## Step 6



- Remove two screws from the bottom of the device.



## Step 7



- Remove the thumb dial panel by sliding it away from the device.
- ⓘ You can do this step earlier, after you remove all of the screws from the thumb drive panel.

## Step 8



- Remove the back panel, exposing the inside of the device.

## Step 9



- Remove one screw located on the board below the battery.

## Step 10



- Unplug the male battery plug on the battery wire from the female battery plug on the board.

## Step 11



- Remove the battery by sliding it out of the side of the device.

To reassemble your device, follow these instructions in reverse order.