



Sony Clie PEG-T615C Thumb Dial Replacement

How to replace a Sony Clie PEG-T615C thumb dial.

Written By: Rob



INTRODUCTION

The following guidelines will show the step-by-step procedure on how to remove and replace the Sony Clie thumb dial.



TOOLS:

- [Phillips #00 Screwdriver](#) (1)
-

Step 1 — Thumb Dial



- First, place the device with the screen side facing down. Remove the 2 screws from the thumb dial panel located on the upper right hand side.

Step 2



- Remove the screw directly above the thumb dial panel.

Step 3



- Remove the screw from thumb dial panel on the right handed side of the device.

Step 4



- Remove screw from lower right side of the device.

Step 5



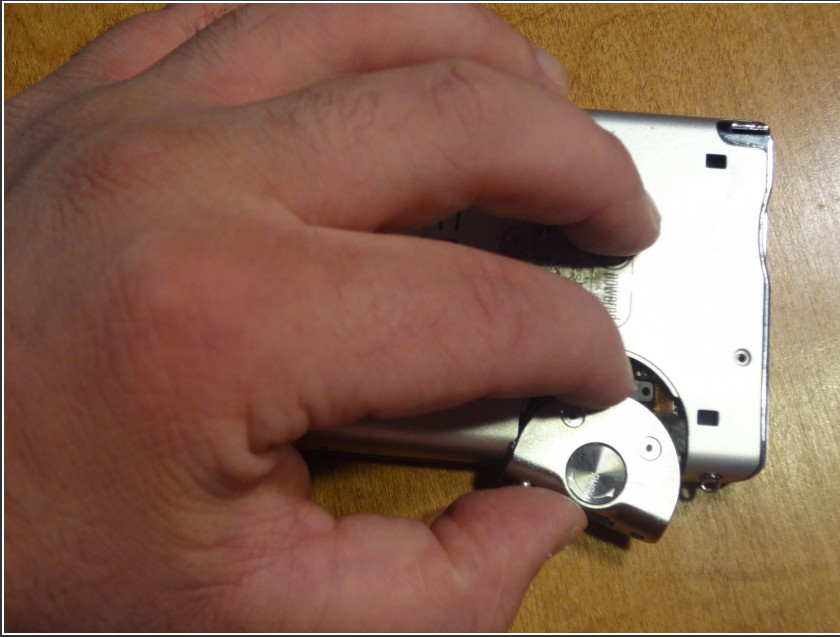
- Remove 1 screw from the lower left side of the device.

Step 6



- On the bottom of the device, remove both the left and right screws.

Step 7



- Remove the thumb dial panel by sliding it away from the device.

Step 8



- Remove the back panel exposing the inside of the device.

Step 9



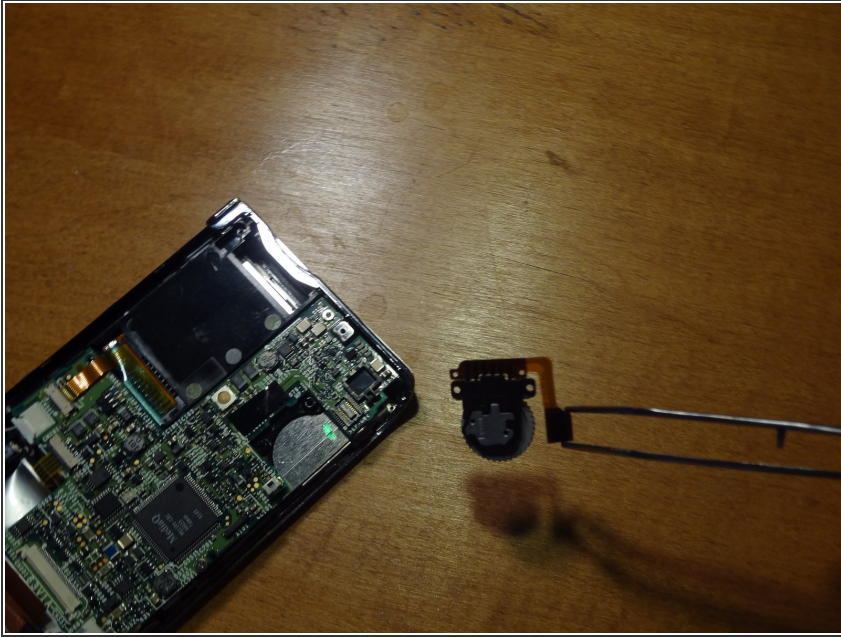
- Locate thumb dial on top right side of the board.

Step 10



- Follow ribbon wire to locate where it plugs into the board. The plug is a flat black square.

Step 11



- Pull plug straight up to remove from board.

To reassemble your device, follow these instructions in reverse order.