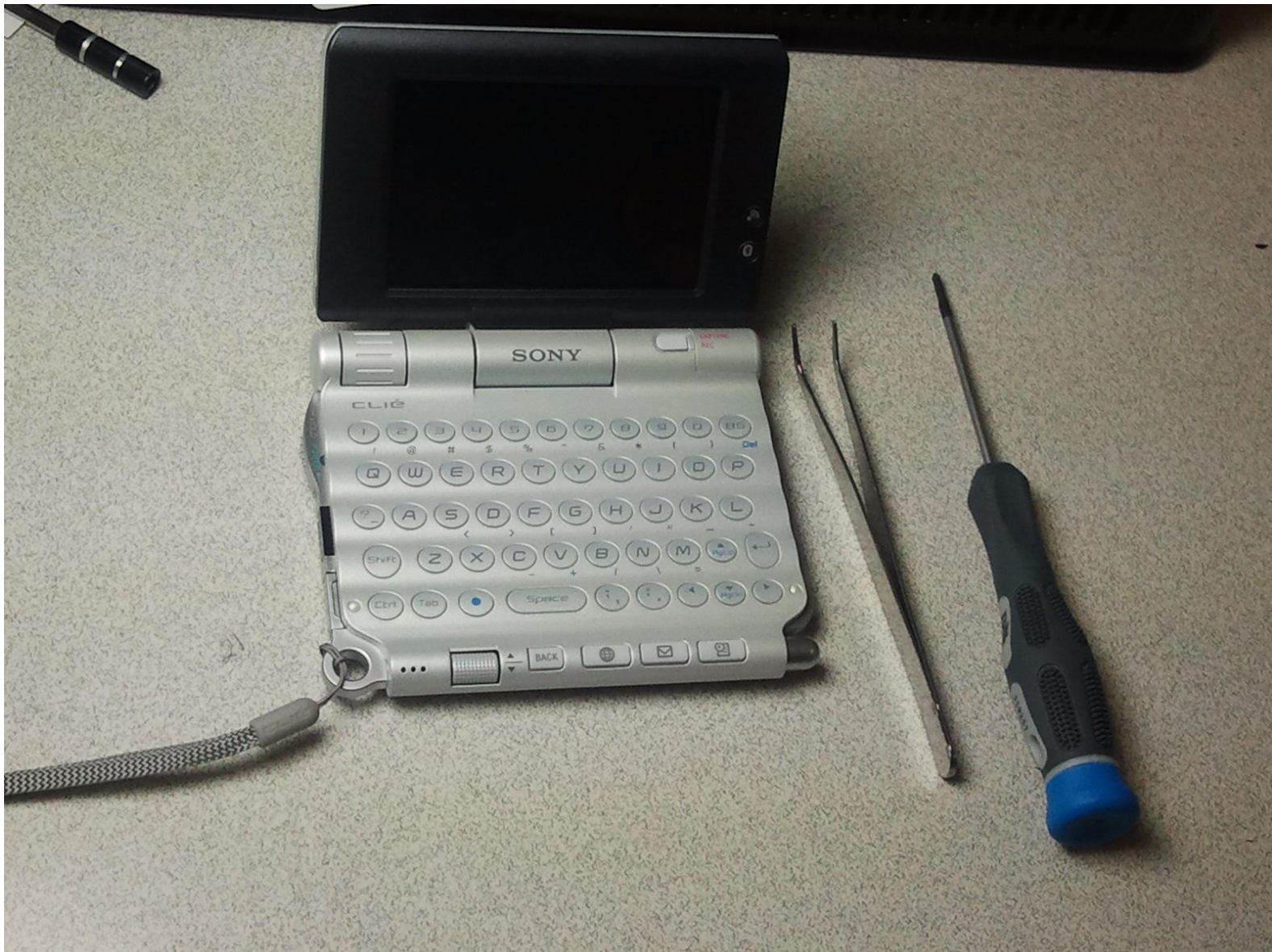




# Sony Clie PEG-UX50 Rear Case Replacement

This instructs user how to remove the rear cover of a Sony Clie PEG-UX50

Written By: Christopher M Garcia



---

## INTRODUCTION

Rear Cover Removal allows the inside of the Clie to be exposed for further replacement of internal components

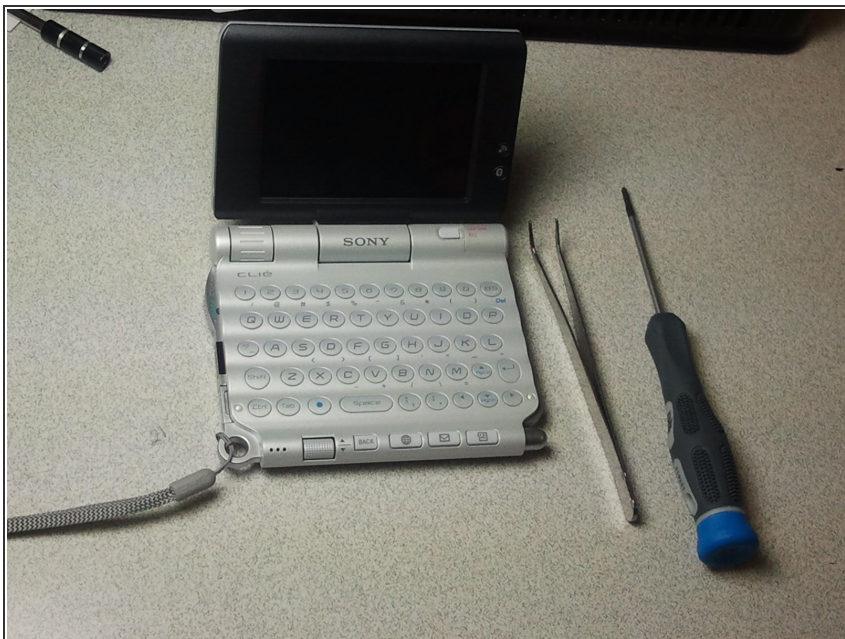
---



### TOOLS:

- [Phillips #1 Screwdriver](#) (1)
  - [Tweezers](#) (1)
-

## Step 1 — Rear Case



- Tools needed:
- Tweezers
- Philips Screwdriver

## Step 2



- Using Phillips screwdriver, remove 4 screws from the rear cover.
- Remove 1 screw from the right side.
- Remove 1 screw from the top



### Step 3



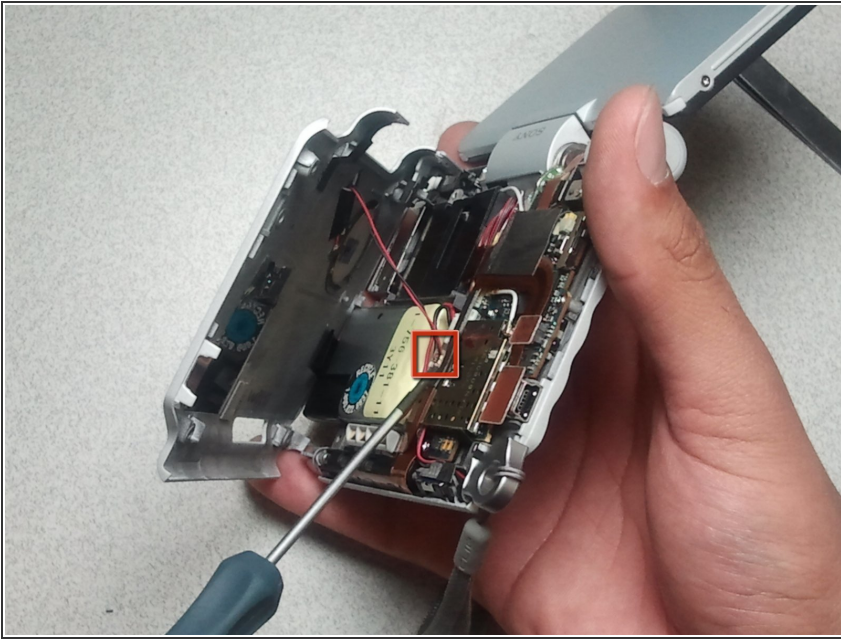
- Gently pry rear cover to remove USB port cover and Hold Switch.

### Step 4



- Remove side cover.
- Gently pull the rear cover to separate from device.

## Step 5



- Slowly pull rear cover from device being careful not to pull the speaker connection wire.
- Remove speaker wire from device.
- The rear cover is now separated from the device.

To reassemble your device, follow these instructions in reverse order.