



Sony Clie PEG-UX50 Tilt Screen Replacement

This guide gives you an insight on how to remove the tilt screen on a Sony Clie PEG-UX50

Written By: Rishad R Rai



INTRODUCTION

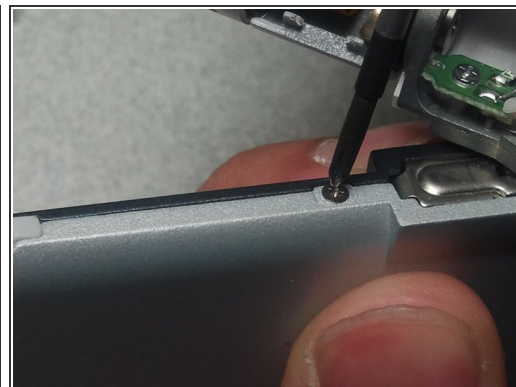
The Sony Clie PEG-UX50 has a separate tilt screen mechanism that does not require the user to dismantle the battery plate in order to get to the display .



TOOLS:

- [Phillips #1 Screwdriver](#) (1)
-

Step 1 — Tilt Screen



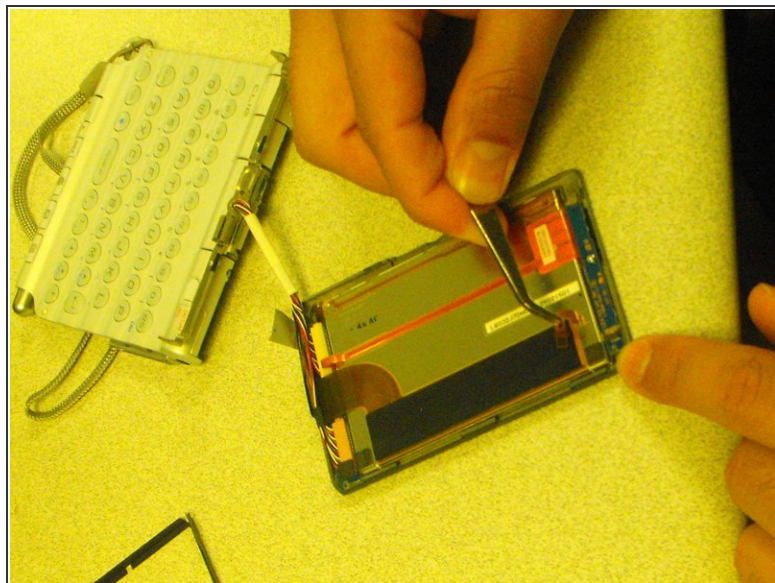
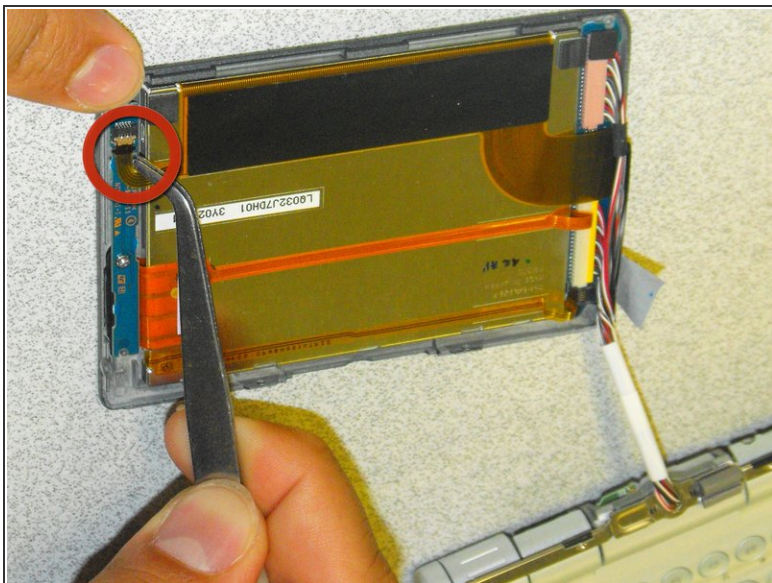
- Take off the screws located on the 2 sides of the tilt screen.
- Unscrew the screw located at the tilt base of the screen

Step 2



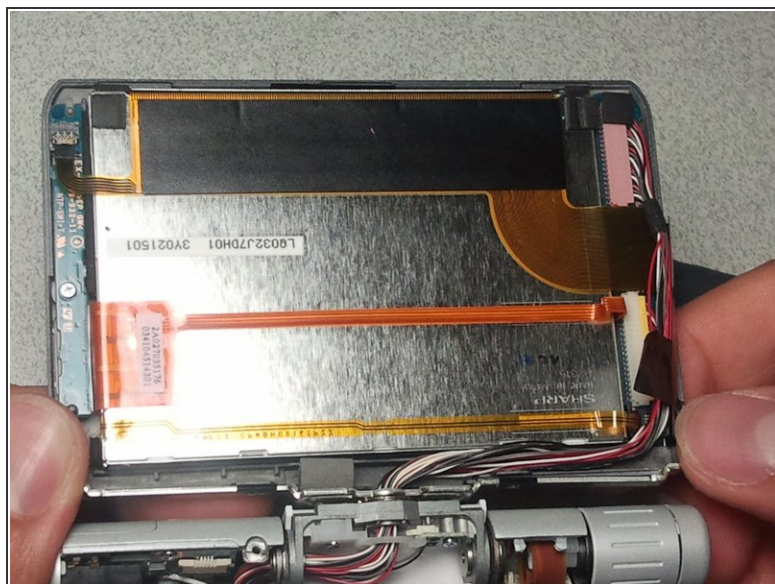
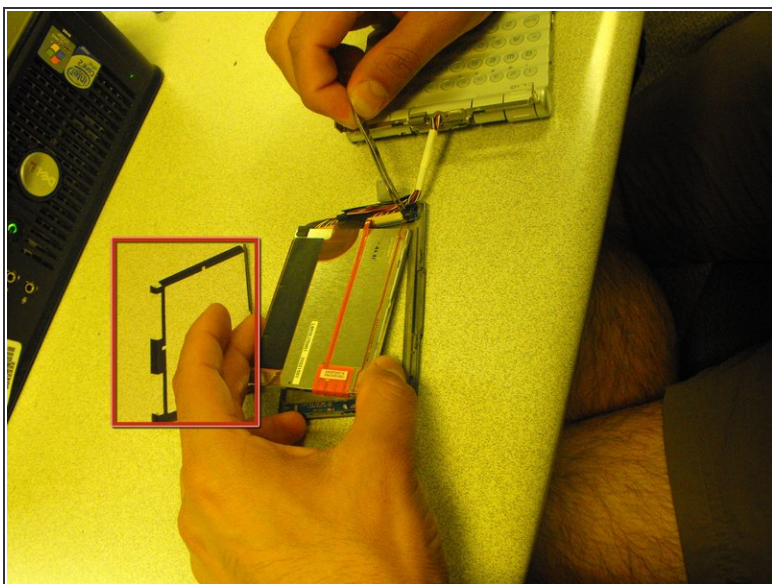
- Gently remove back plate of tilt screen by sliding upward.
- ⚠ With caution, lift wires from the track in the back plate

Step 3



- Disconnect the thin bus cable attached to the Integrated Circuit

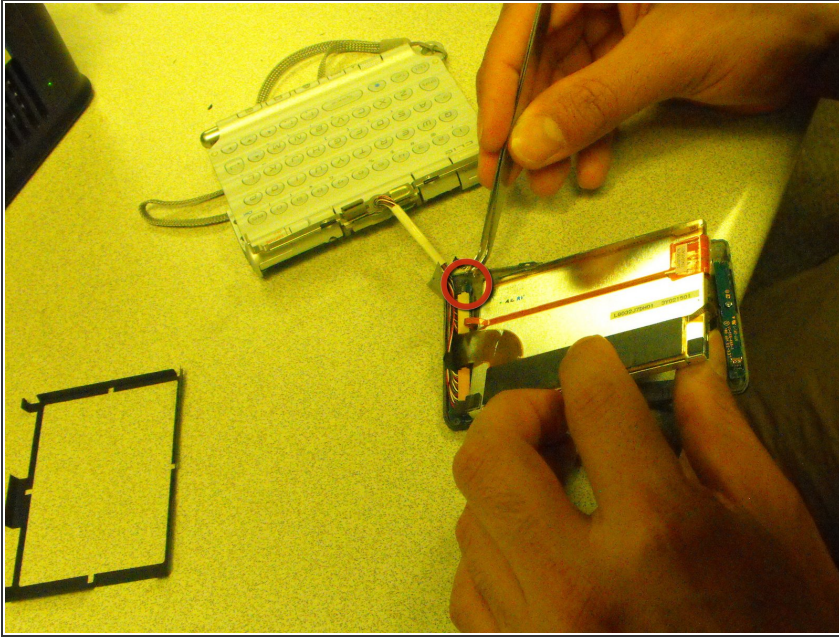
Step 4



- Detach the plastic black frame from in between the plate and lcd.

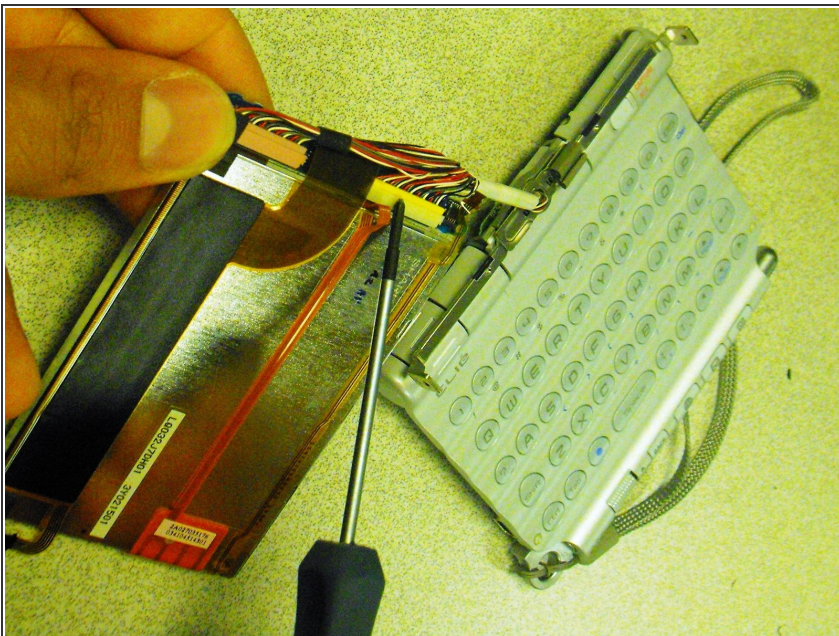
⚠ Do not disconnect the display from the board yet.

Step 5



- Disconnect the thin connector from the face plate using the tweezers

Step 6



- With your hands, quick-release and disconnect the thick cable

To reassemble your device, follow these instructions in reverse order.