



Sony Cyber-Shot DSC-H1 Lens Replacement

Replacing a damaged lens.

Written By: Charlie Puggedá



INTRODUCTION

If the camera lens is unrepairable, you may just need to replace it with a brand new one. This is how you take it apart before you insert a new one.



TOOLS:

- [Phillips #0 Screwdriver](#) (1)
 - [Tweezers](#) (1)
-

Step 1 — Back Panel



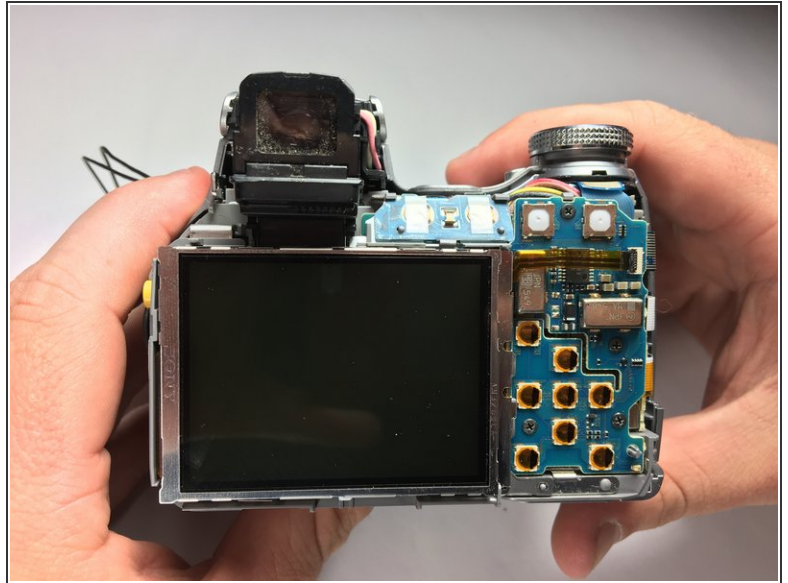
- Power down the camera and remove the batteries.

Step 2



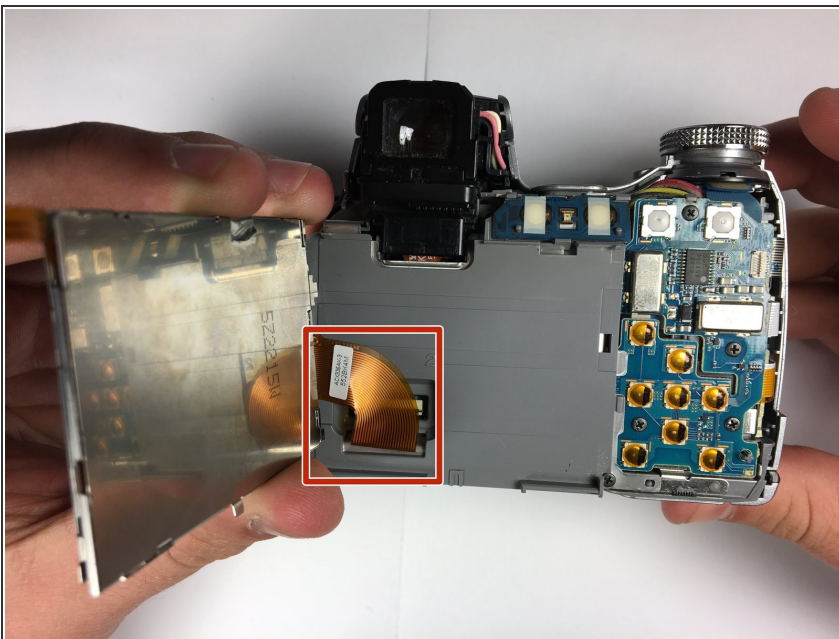
- Using a Phillips #0 screwdriver, remove all of the screws from the back panel casing.
- ⓘ There are six 5.22mm long, 3.00mm head diameter screws total.
- ⓘ The left side is not shown but there should be 1 screw on that side.

Step 3



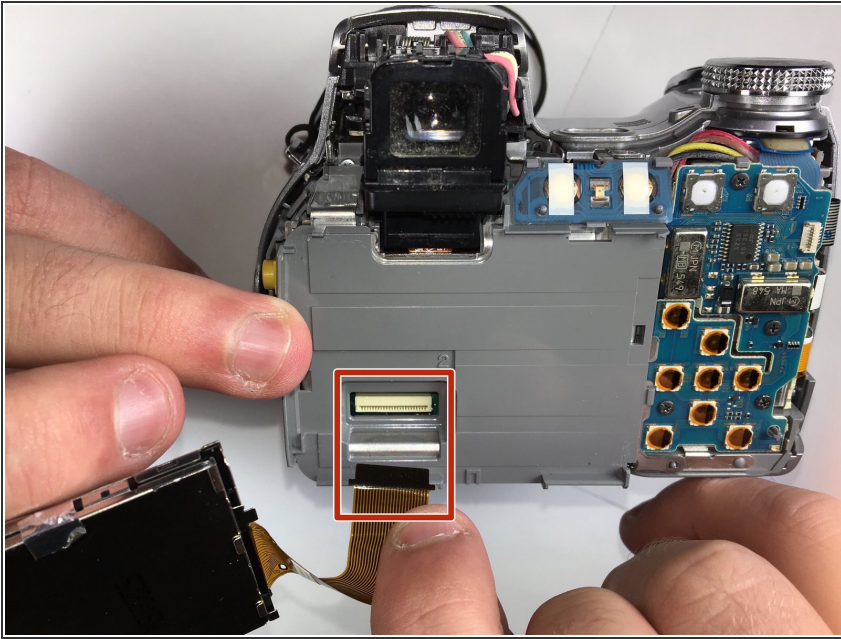
- Remove the back casing.
- ⓘ The casing itself is sturdy so don't be afraid to remove it forcefully.

Step 4 — LCD Screen



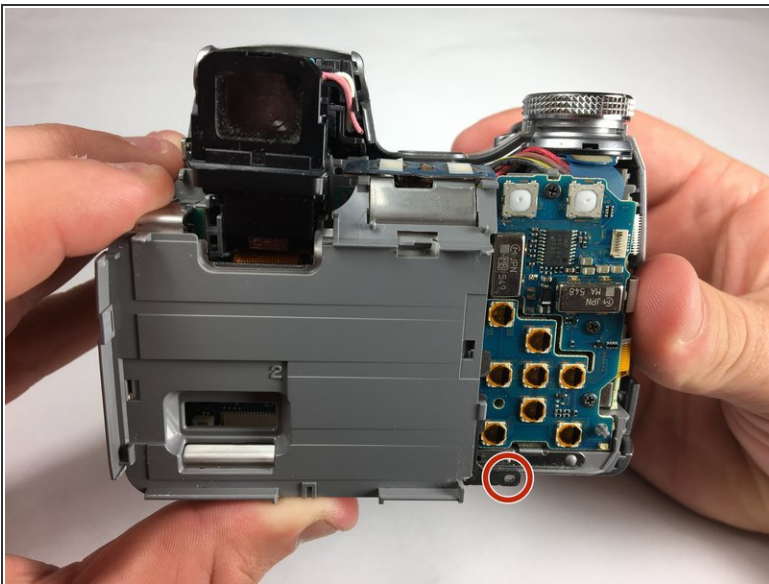
- Take a hold of the right side of the LCD screen and lift it towards the left.
- ⓘ The screen is held firm and will require a bit of force to ease it from its housing.

Step 5



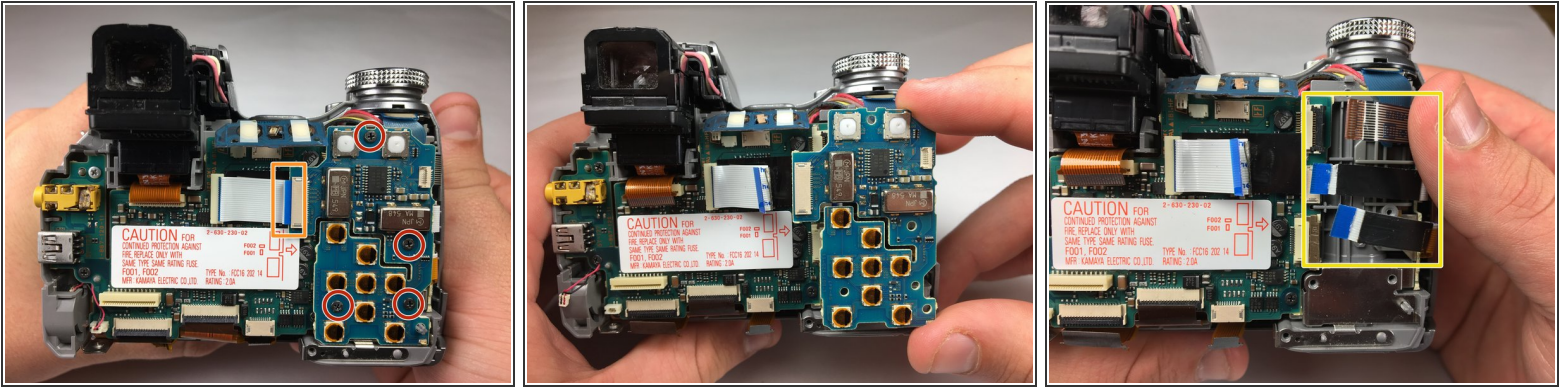
- Unplug the large conductive tape attached to the screen.
- Remove the LCD from the device.

Step 6 — Lens



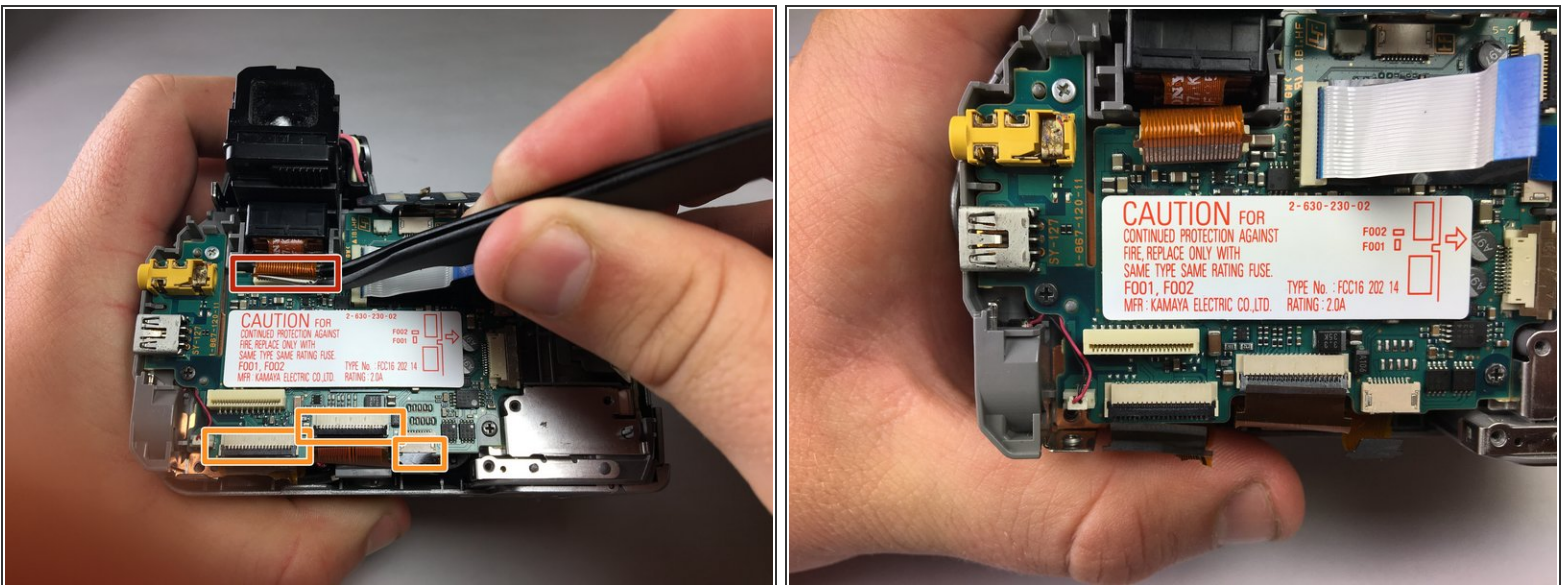
- Unscrew and remove the gray backing behind the LCD screen.

Step 7



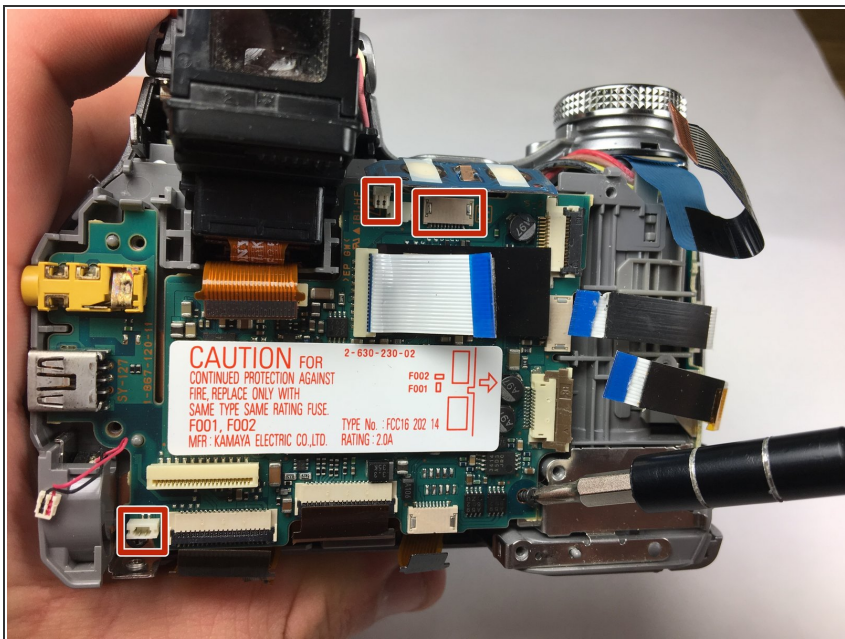
- Using a Phillips #0 screwdriver, unscrew the four 4.24 mm black screws off the blue panel on the right side.
- Disconnect the white conductive tape.
- Remove the blue panel.
- Use tweezers to remove the three conductive tape strips on the right side.

Step 8



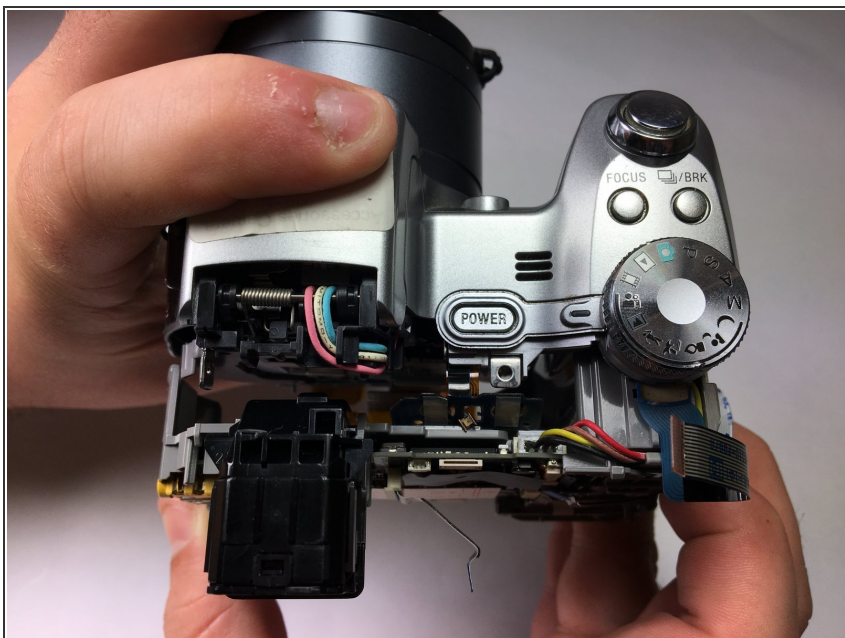
- Use tweezers to remove the orange conductive tape located below the shutter.
- Unplug the three ZIF connectors from the motherboard.

Step 9



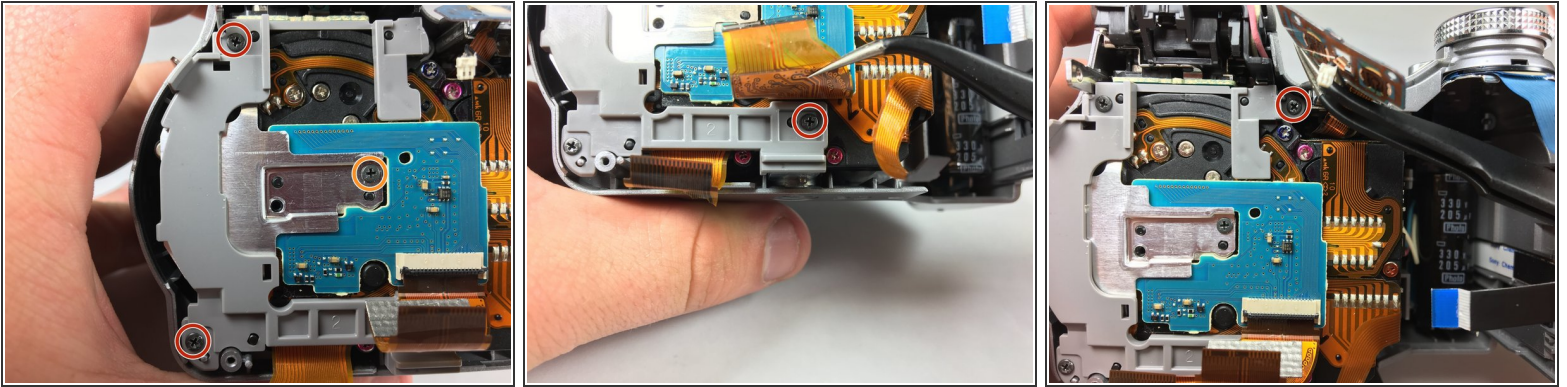
- Flip up the blue overlapping board at the top.
- Use tweezers to disconnect the remaining connectors.

Step 10



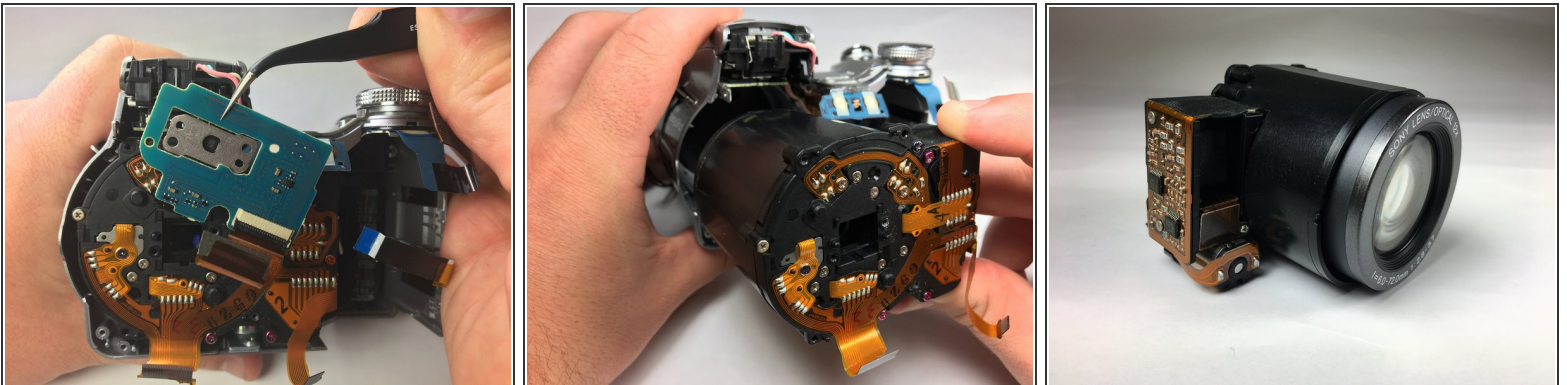
- Remove the motherboard and battery pack unit.

Step 11



- Use a screwdriver to remove 5 screws on plastic panel.
- Remove the single screw on the silver panel in the center.

Step 12



- Use tweezers to remove the blue control panel.
- Remove the lens from the camera.

To reassemble your device, follow these instructions in reverse order.