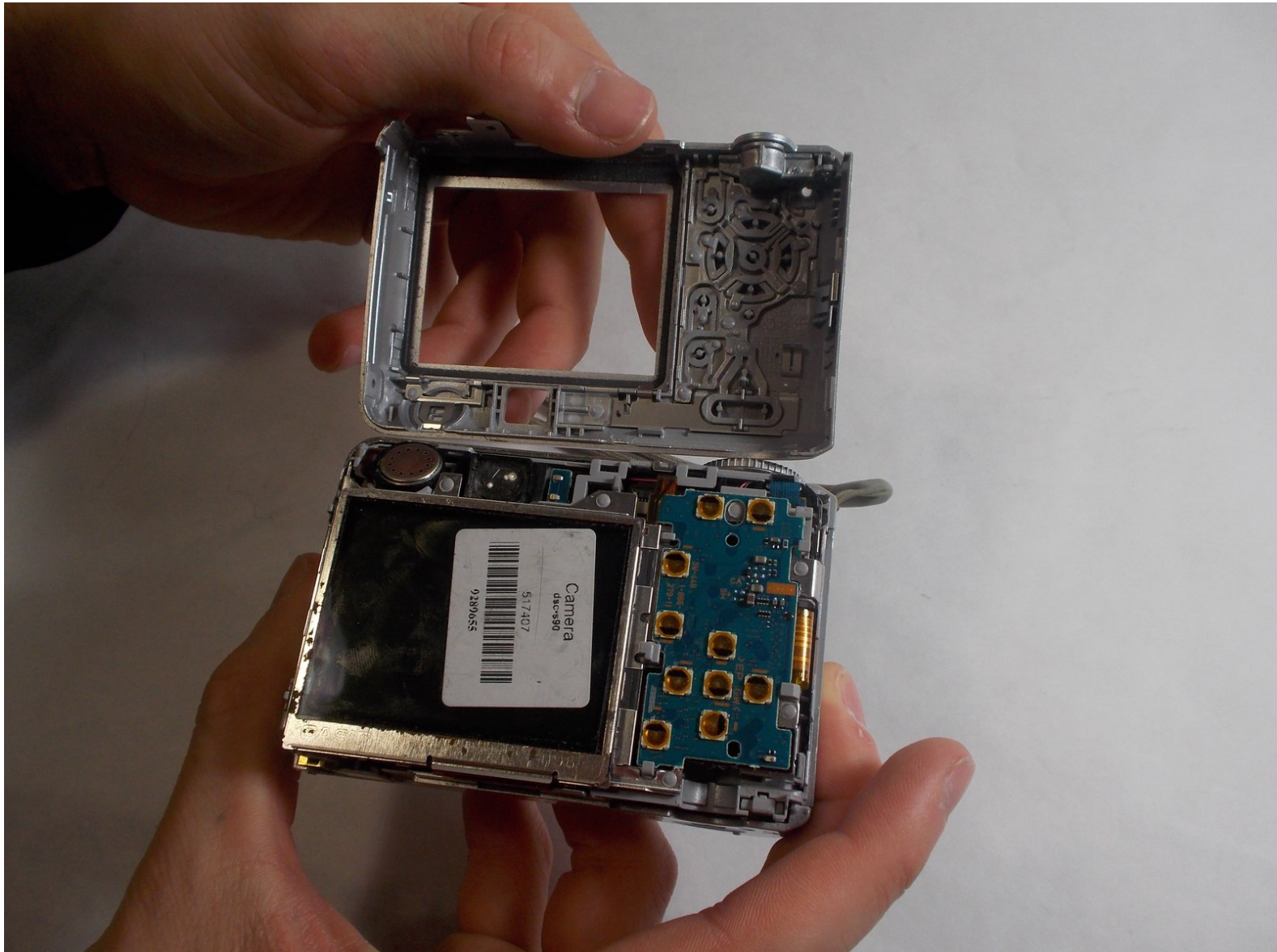




# Sony Cyber-Shot DSC-S90 Back Case Replacement

How to replace a Sony Cyber-Shot DSC-S90 back case.

Written By: Alecsander da Silva



## INTRODUCTION

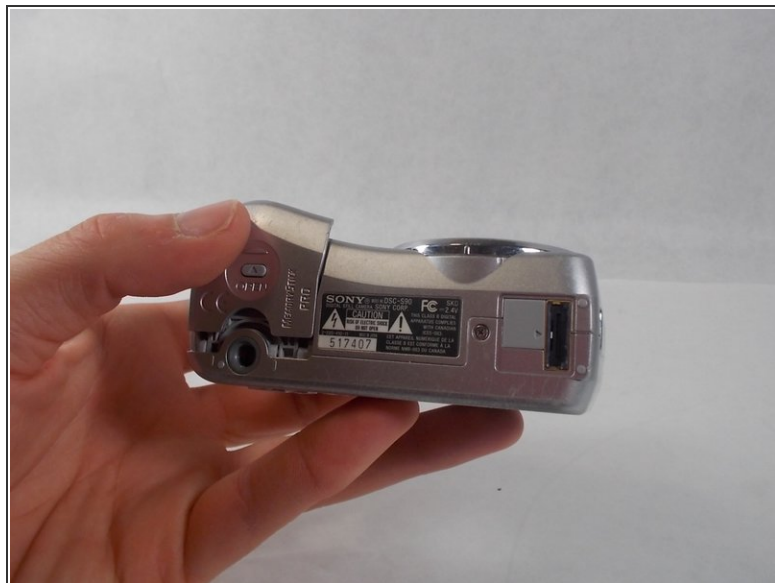
This guide will primarily focus on the replacement and disassembly of the back casing of the Sony Cyber-Shot DSC-S90 camera. This is an easy step by step process that should give you little to no difficulty.



### TOOLS:

- [Phillips #00 Screwdriver](#) (1)
  - [iFixit Opening Tools](#) (1)
-

## Step 1 — Batteries



- Hold down the "open" button (gray oval with arrow pointing upwards) on the battery port door.
- While holding the button downwards, slide the door upwards to unlock and open the door.

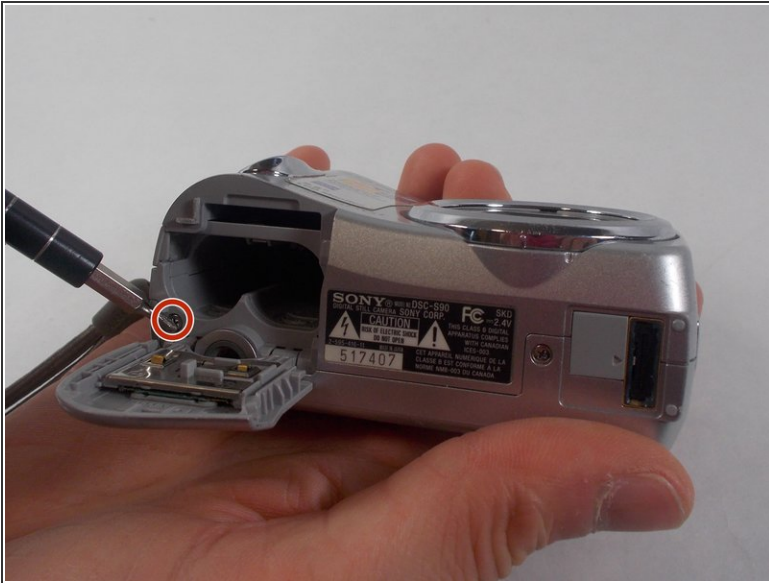
## Step 2



- Pull open the door and allow the batteries to fall out.

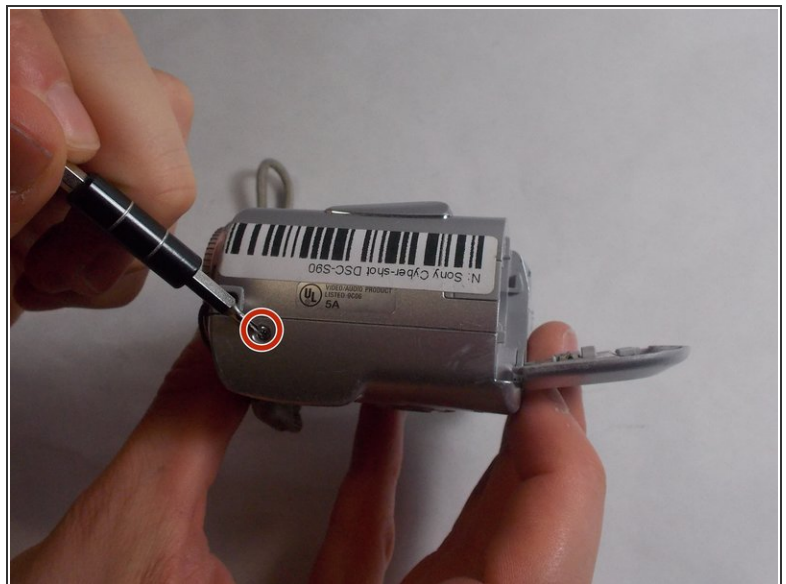


## Step 3 — Back Case



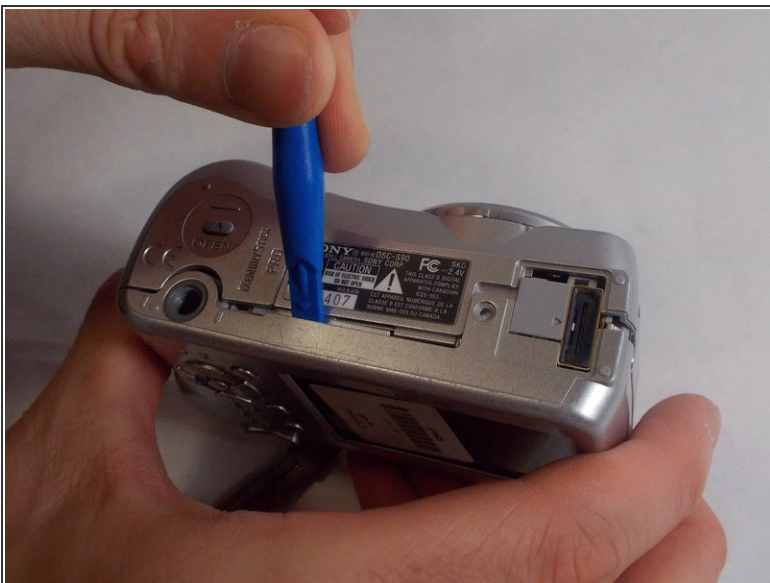
- Remove the 2mm Phillips #00 screw under the battery port door.
- Remove the 2mm Phillips #00 screw towards the right of the bottom-side of the camera.

## Step 4



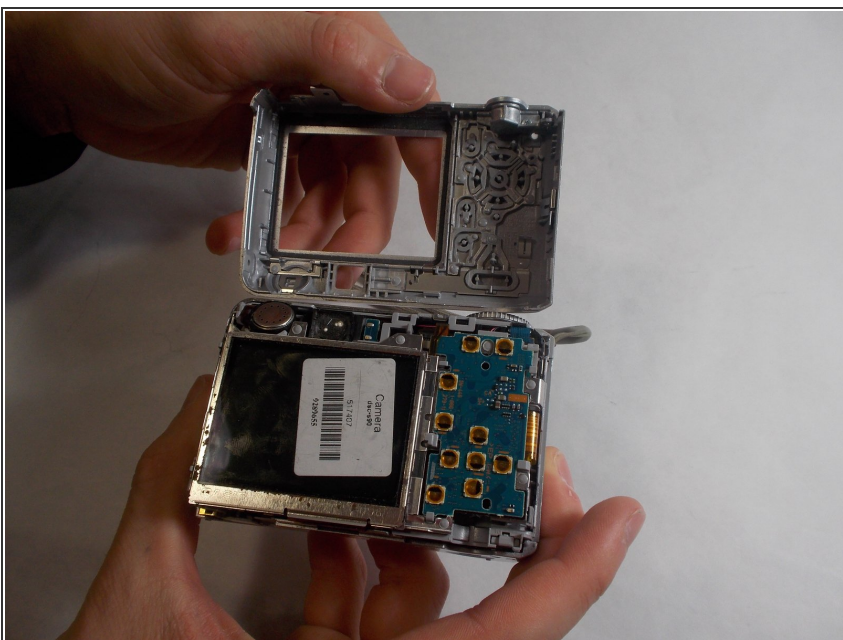
- Remove the two 2mm Phillips #00 screws (one on each side of the camera).

## Step 5



- Use an opening tool to unlock the front case from the main body of the camera. Use the tool on the right side and bottom of the camera with the LCD screen facing you.

## Step 6



- Pull apart the back case from the main body of the camera.

To reassemble your device, follow these instructions in reverse order.

This document was generated on 2020-01-06 09:28:24 PM (MST).

