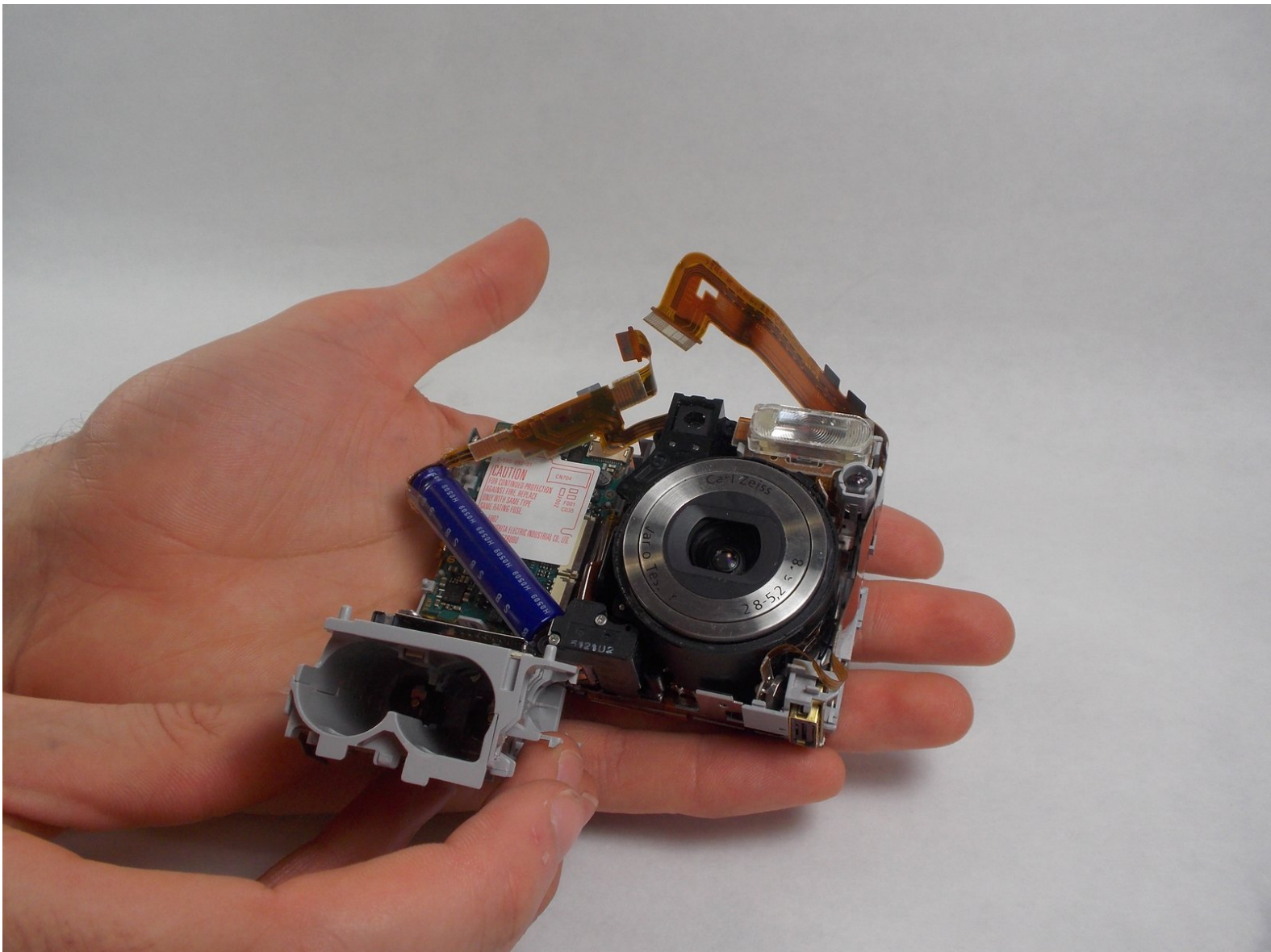




Sony Cyber-Shot DSC-S90 Battery Terminal Replacement

This guide shows how to disassemble a Sony Cyber-Shot DSC-S90 and remove its battery terminal.

Written By: Jonathan Arns



INTRODUCTION

Removing the Sony Cyber-Shot DSC-S90 battery terminal is considered to be a moderately difficult process. This is because through the process of removing the battery terminal, the disassembly of almost the entire camera is required. Despite the enhancement of difficulty in this 15 step guide, the only tool needed is the J00 screwdriver.



TOOLS:

- [Phillips #00 Screwdriver](#) (1)
 - [iFixit Opening Tools](#) (1)
 - [Spudger](#) (1)
-

Step 1 — Batteries



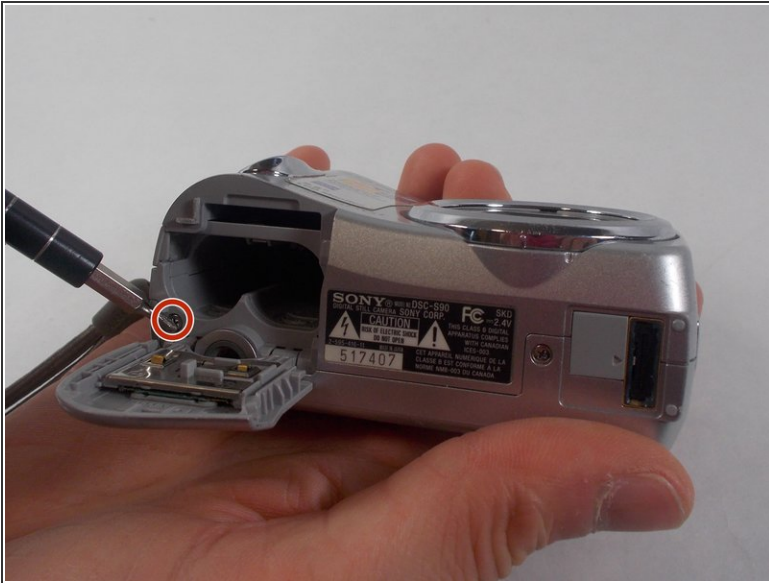
- Hold down the "open" button (gray oval with arrow pointing upwards) on the battery port door.
- While holding the button downwards, slide the door upwards to unlock and open the door.

Step 2



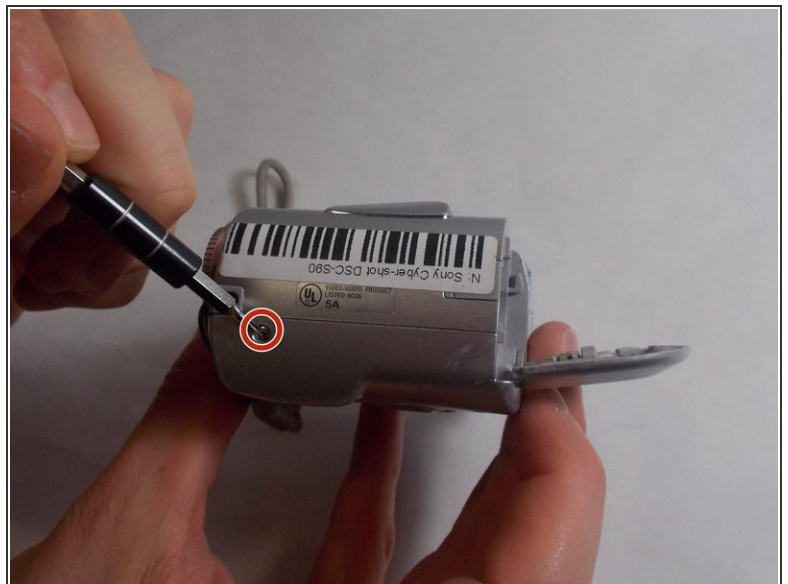
- Pull open the door and allow the batteries to fall out.

Step 3 — Back Case



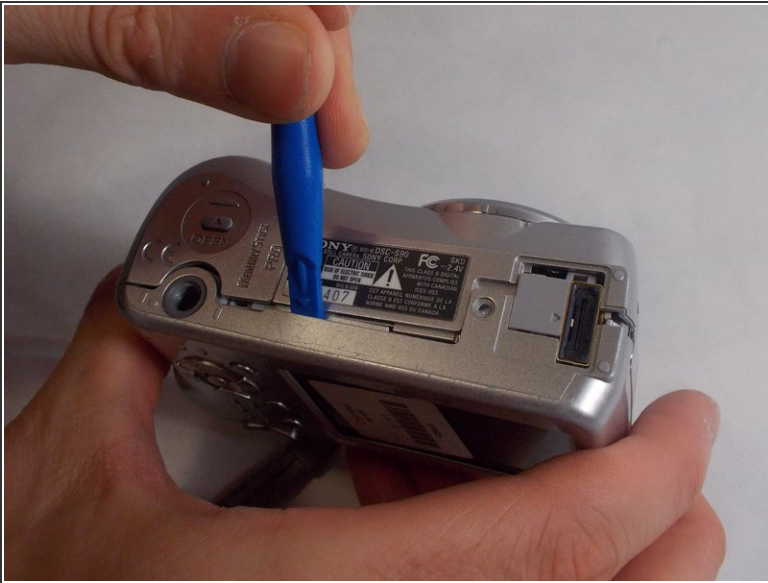
- Remove the 2mm Phillips #00 screw under the battery port door.
- Remove the 2mm Phillips #00 screw towards the right of the bottom-side of the camera.

Step 4



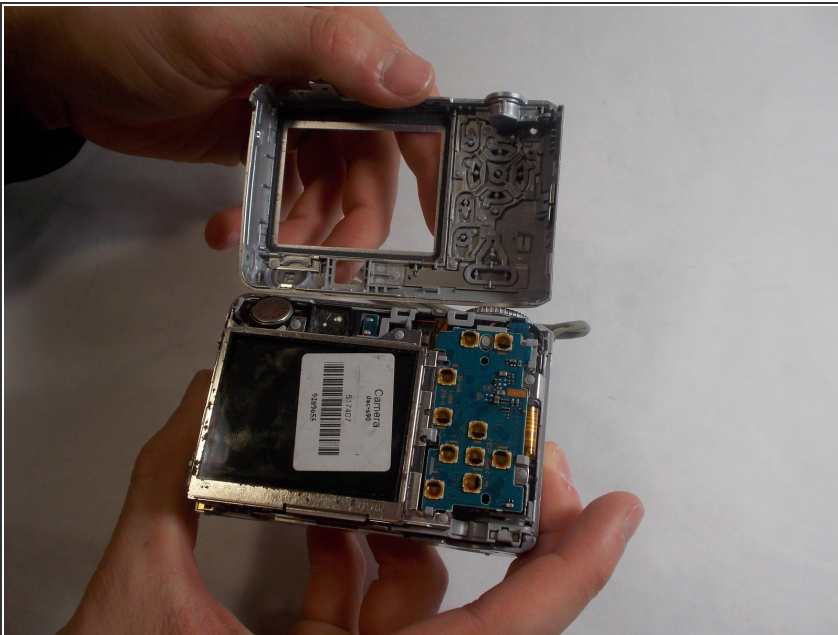
- Remove the two 2mm Phillips #00 screws (one on each side of the camera).

Step 5



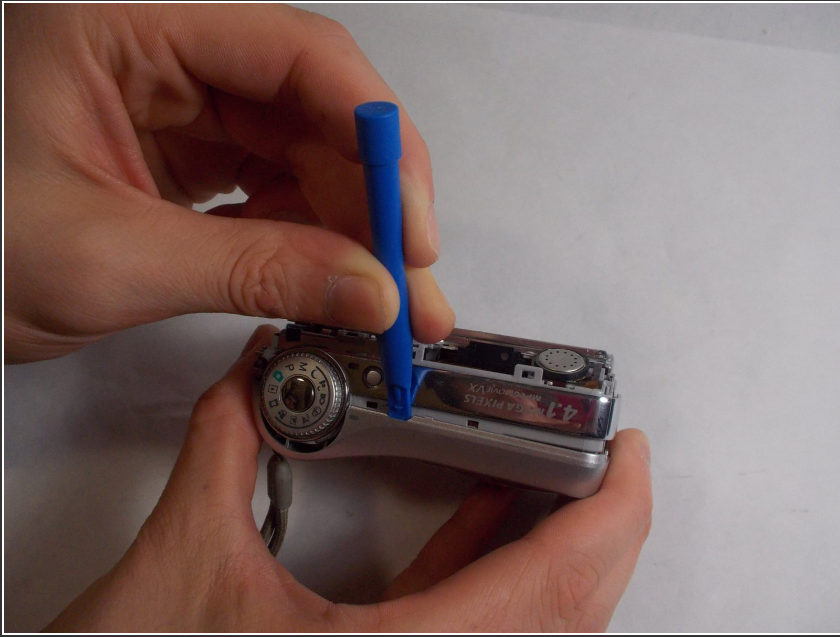
- Use an opening tool to unlock the front case from the main body of the camera. Use the tool on the right side and bottom of the camera with the LCD screen facing you.

Step 6



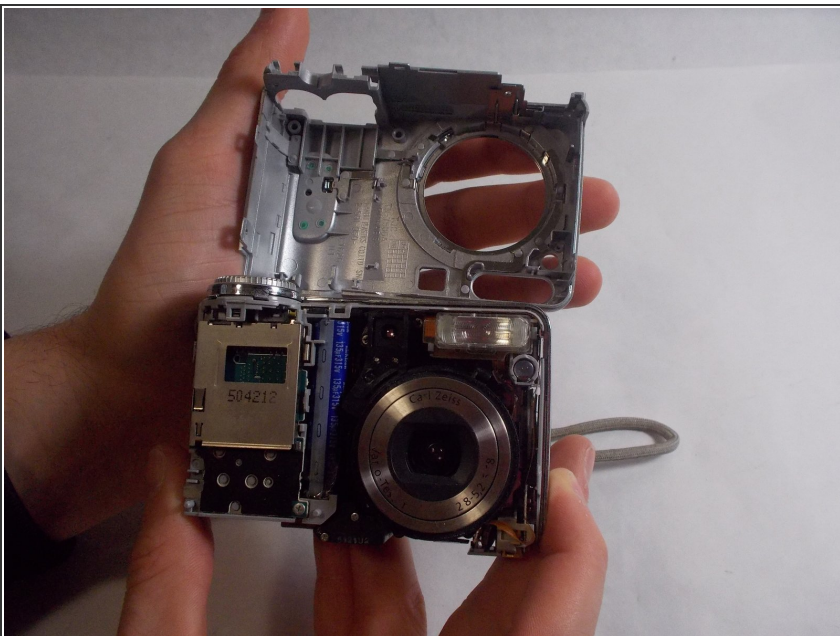
- Pull apart the back case from the main body of the camera.

Step 7 — Front Case



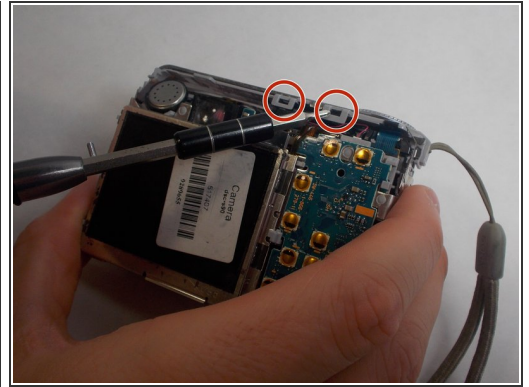
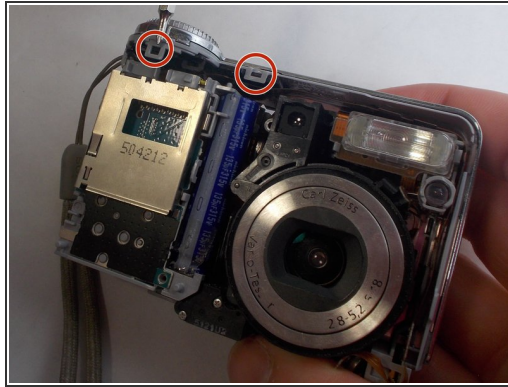
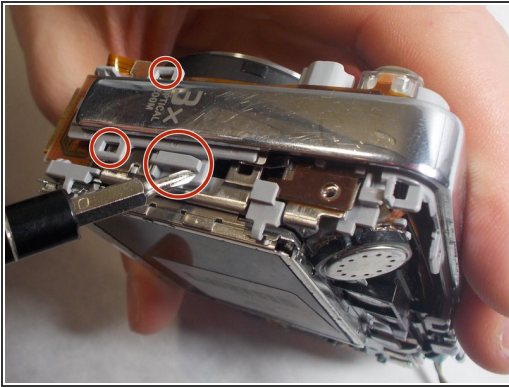
- Use an opening tool to unlock the front case from the main body of the camera. Use the tool on the top of the camera.

Step 8



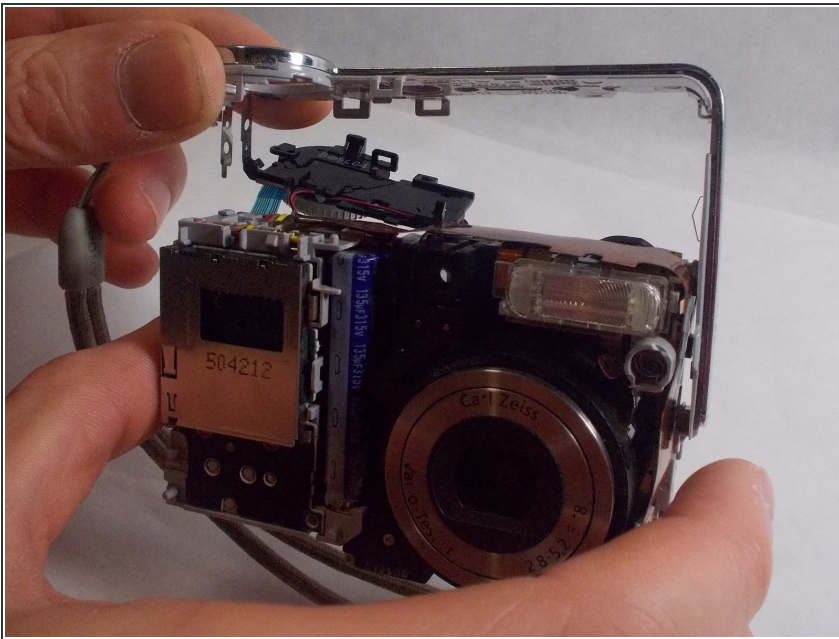
- Pull apart the front case from the main body of the camera.

Step 9 — Top/Side Case



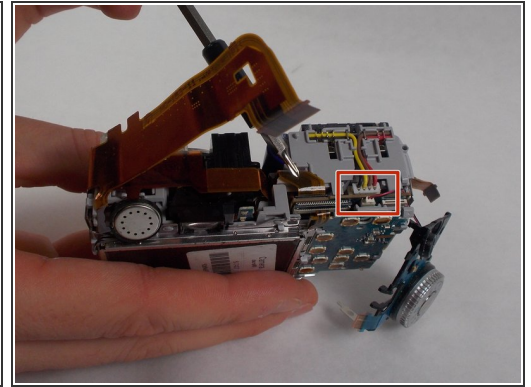
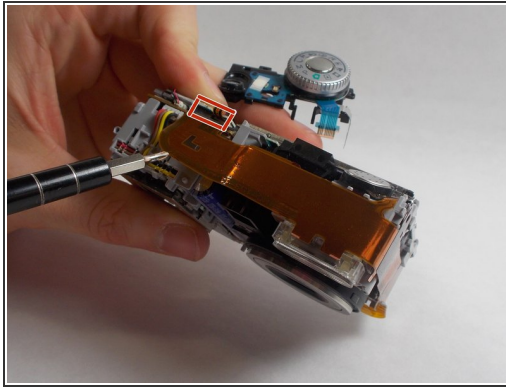
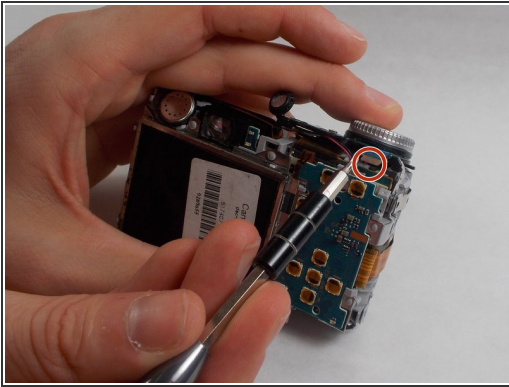
- Release all clips and latches keeping the casing in place using a spudger, opening tool, or screwdriver.

Step 10



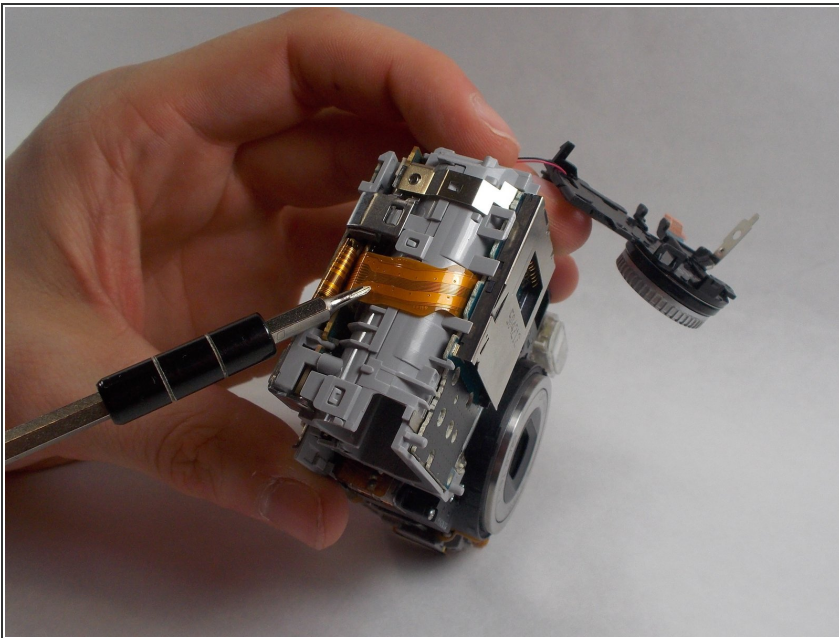
- Now the casing can be removed after all latches have been undone.

Step 11 — Battery Terminal



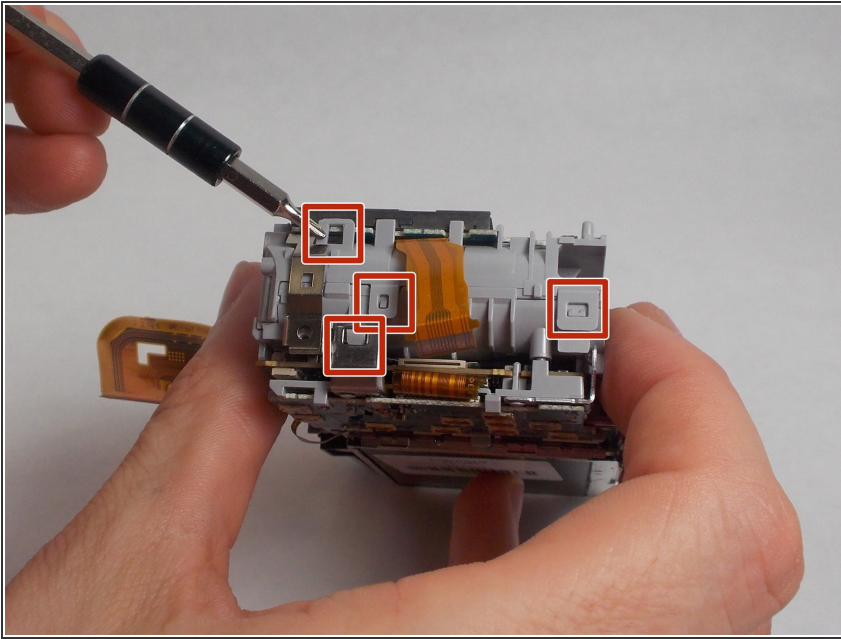
- Disconnect the ribbon cables on top of the battery terminal using a spudger or screwdriver.

Step 12



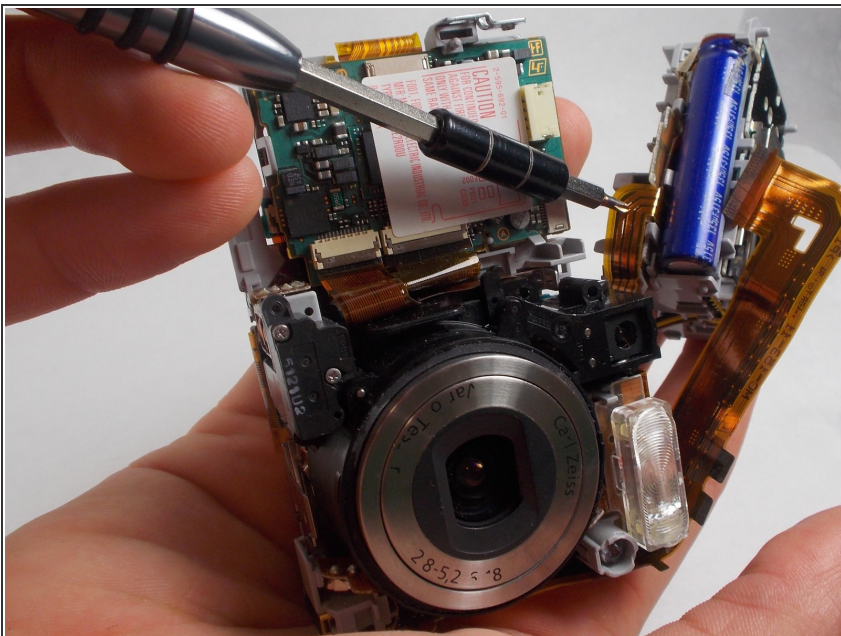
- Disconnect the remaining ribbon cable on the side of the camera using a spudger or screwdriver.

Step 13



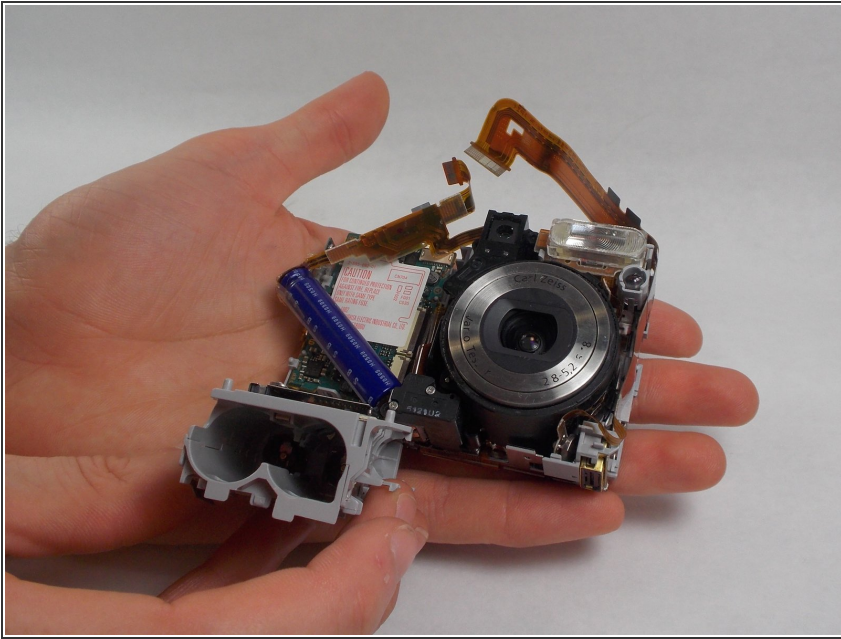
- Use a spudger or screwdriver to unhinge the clips. This releases the battery terminal.

Step 14



- Once the battery terminal is unclipped, pull this ribbon cable out with a spudger or screwdriver to finish freeing the battery terminal.

Step 15



- Now the battery terminal can be separated from the main body of the camera.

To reassemble your device, follow these instructions in reverse order.