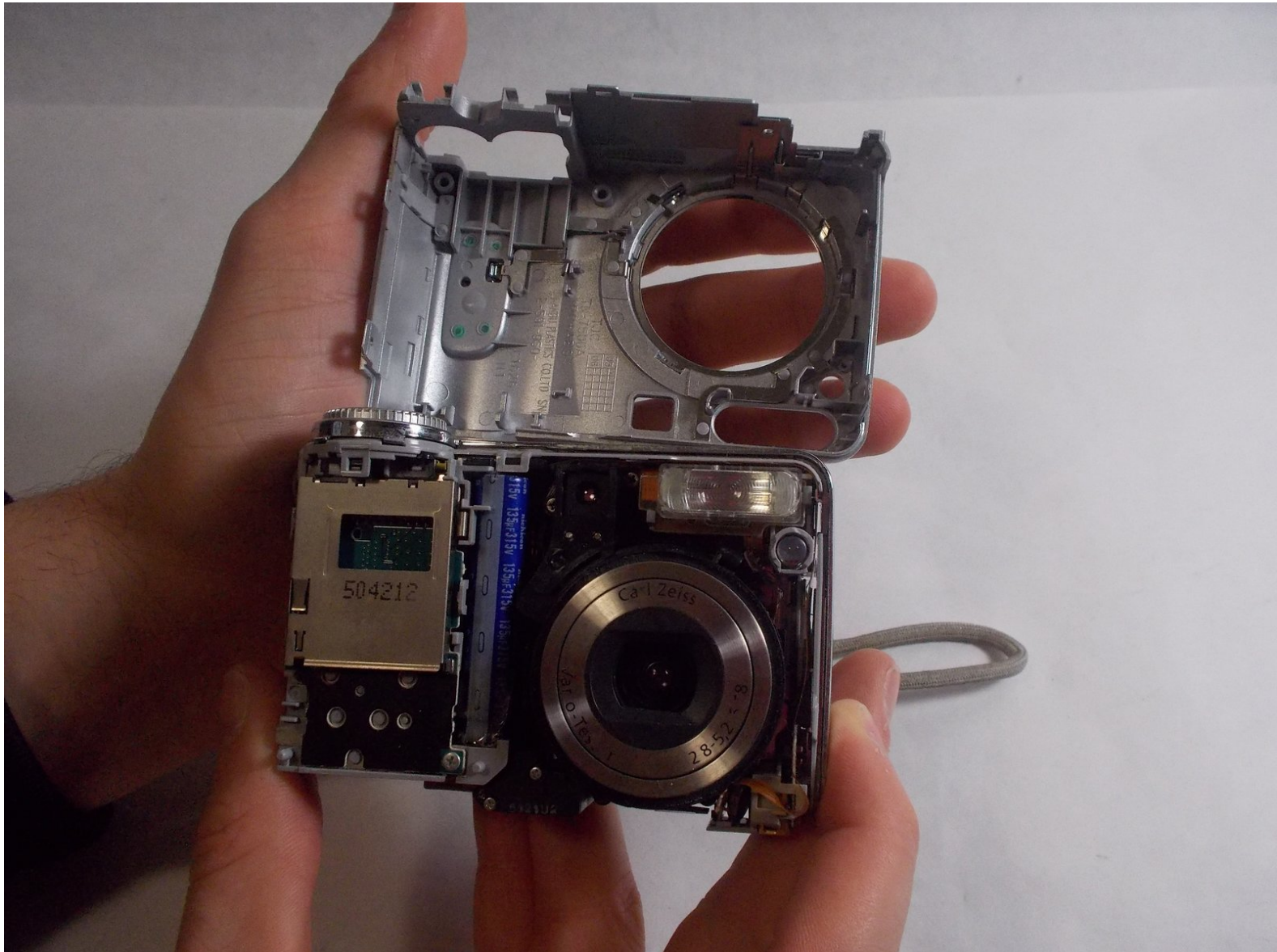




# Sony Cyber-Shot DSC-S90 Front Case Replacement

Removal and replacement of Sony Cyber-shot DSC-S90 case.

Written By: Jonathan Arns



# INTRODUCTION

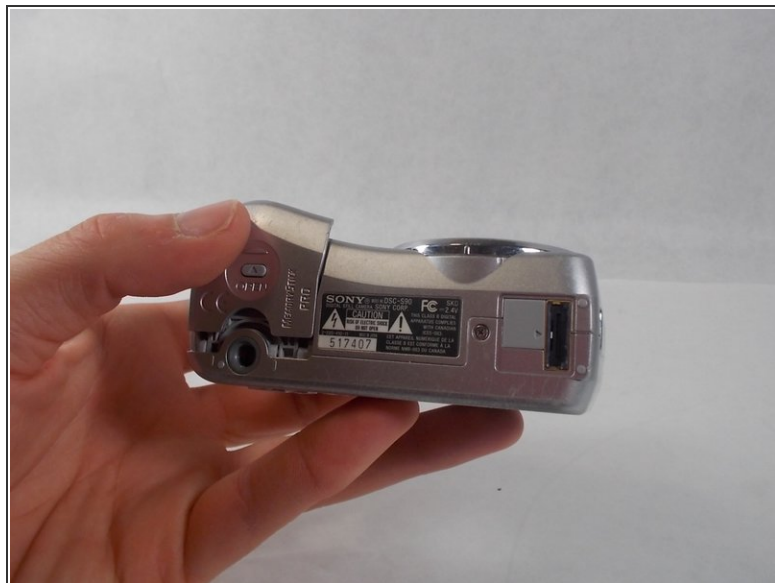
This guide's main objective entails the prying open of the front casing of the Sony Cyber-Shot DSC-S90 camera. The two steps involved are simplistic in nature, and only require the one blue plastic tool used to help open attached parts.



## TOOLS:

- [Phillips #00 Screwdriver](#) (1)
  - [iFixit Opening Tools](#) (1)
-

## Step 1 — Batteries



- Hold down the "open" button (gray oval with arrow pointing upwards) on the battery port door.
- While holding the button downwards, slide the door upwards to unlock and open the door.

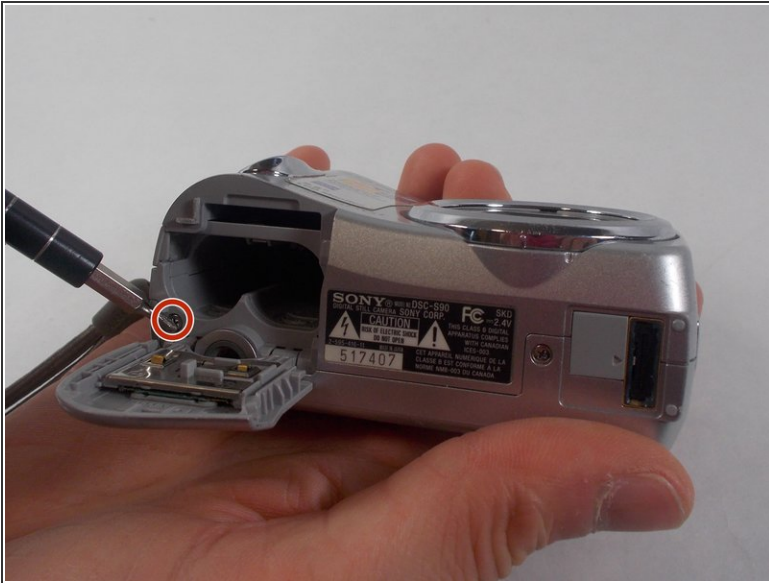
## Step 2



- Pull open the door and allow the batteries to fall out.

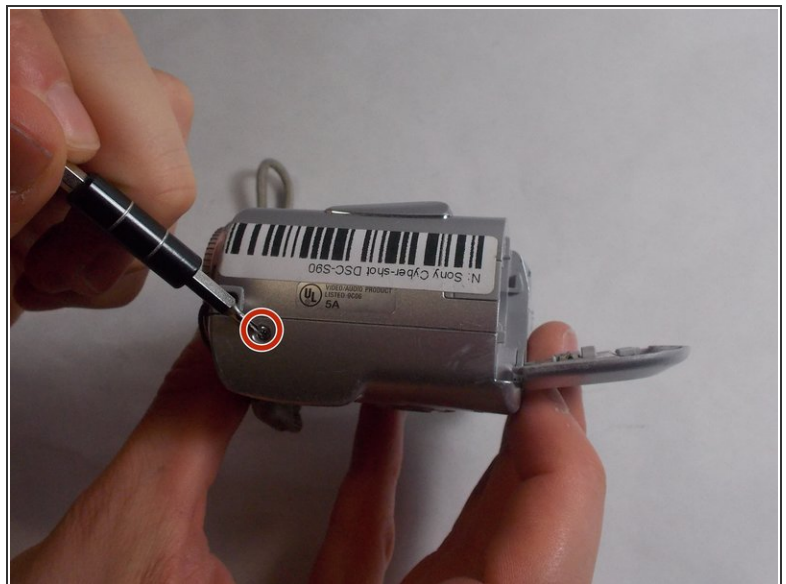


### Step 3 — Back Case



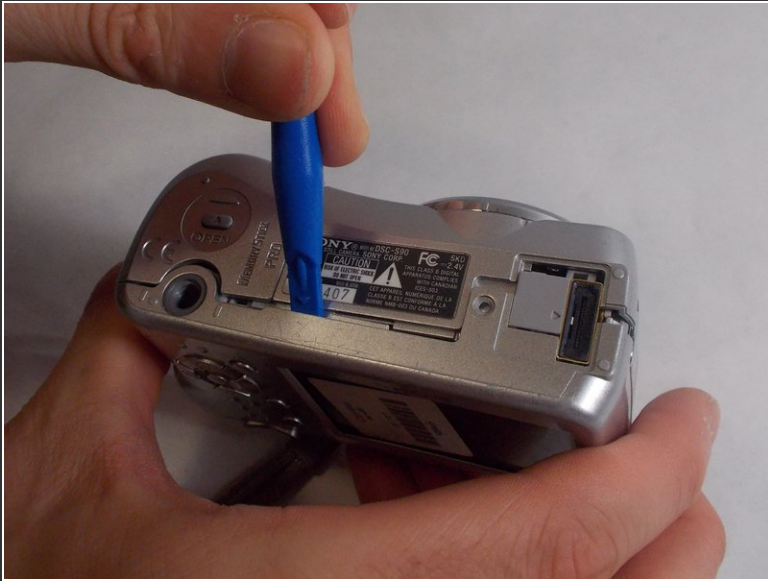
- Remove the 2mm Phillips #00 screw under the battery port door.
- Remove the 2mm Phillips #00 screw towards the right of the bottom-side of the camera.

### Step 4



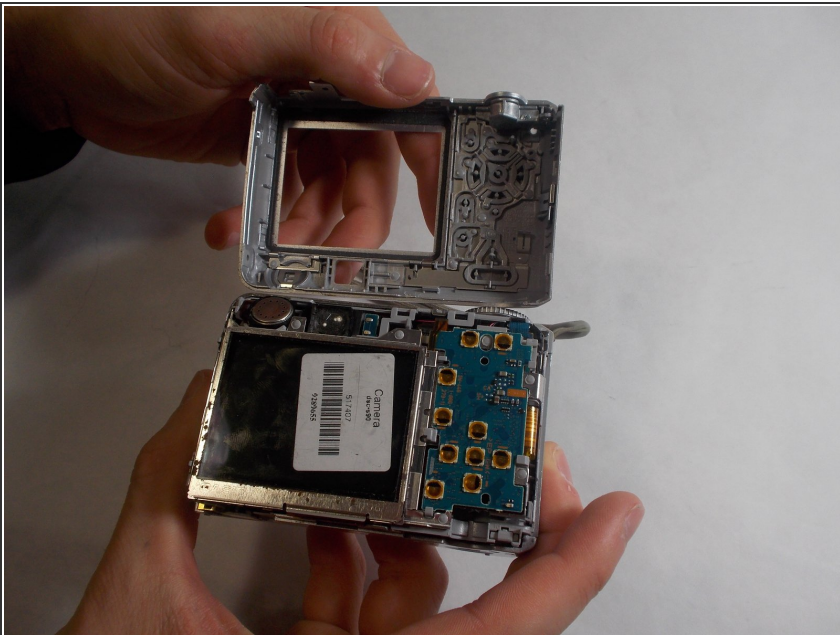
- Remove the two 2mm Phillips #00 screws (one on each side of the camera).

## Step 5



- Use an opening tool to unlock the front case from the main body of the camera. Use the tool on the right side and bottom of the camera with the LCD screen facing you.

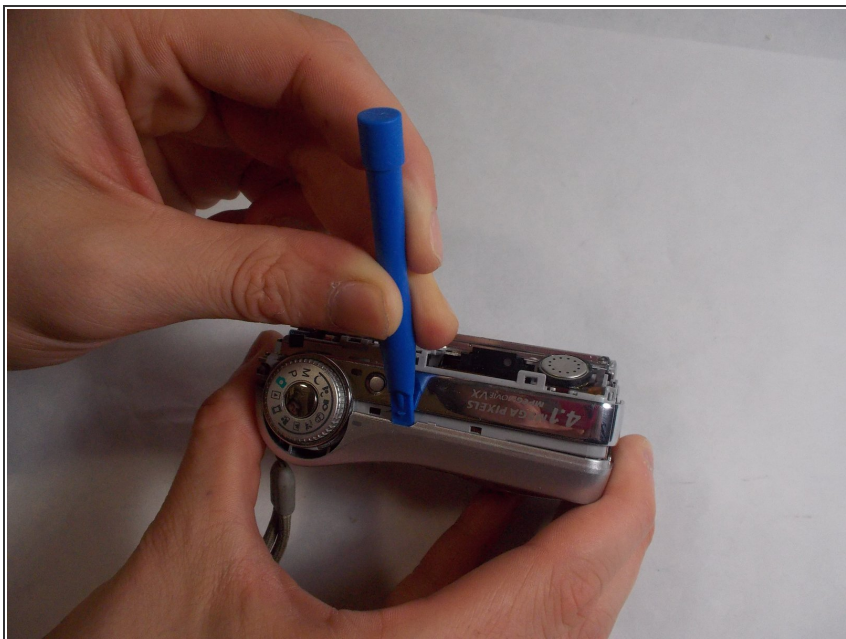
## Step 6



- Pull apart the back case from the main body of the camera.

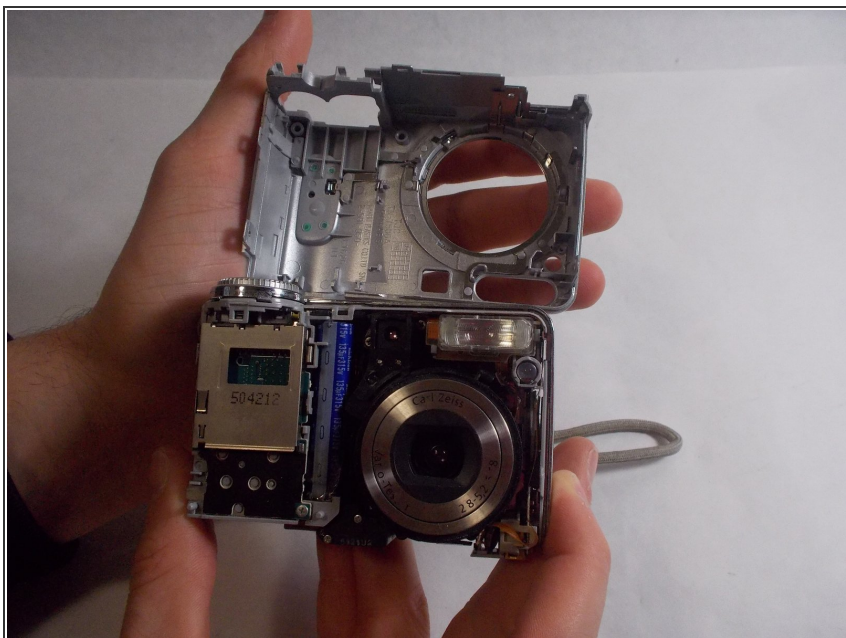


## Step 7 — Front Case



- Use an opening tool to unlock the front case from the main body of the camera. Use the tool on the top of the camera.

## Step 8



- Pull apart the front case from the main body of the camera.

To reassemble your device, follow these instructions in reverse order.