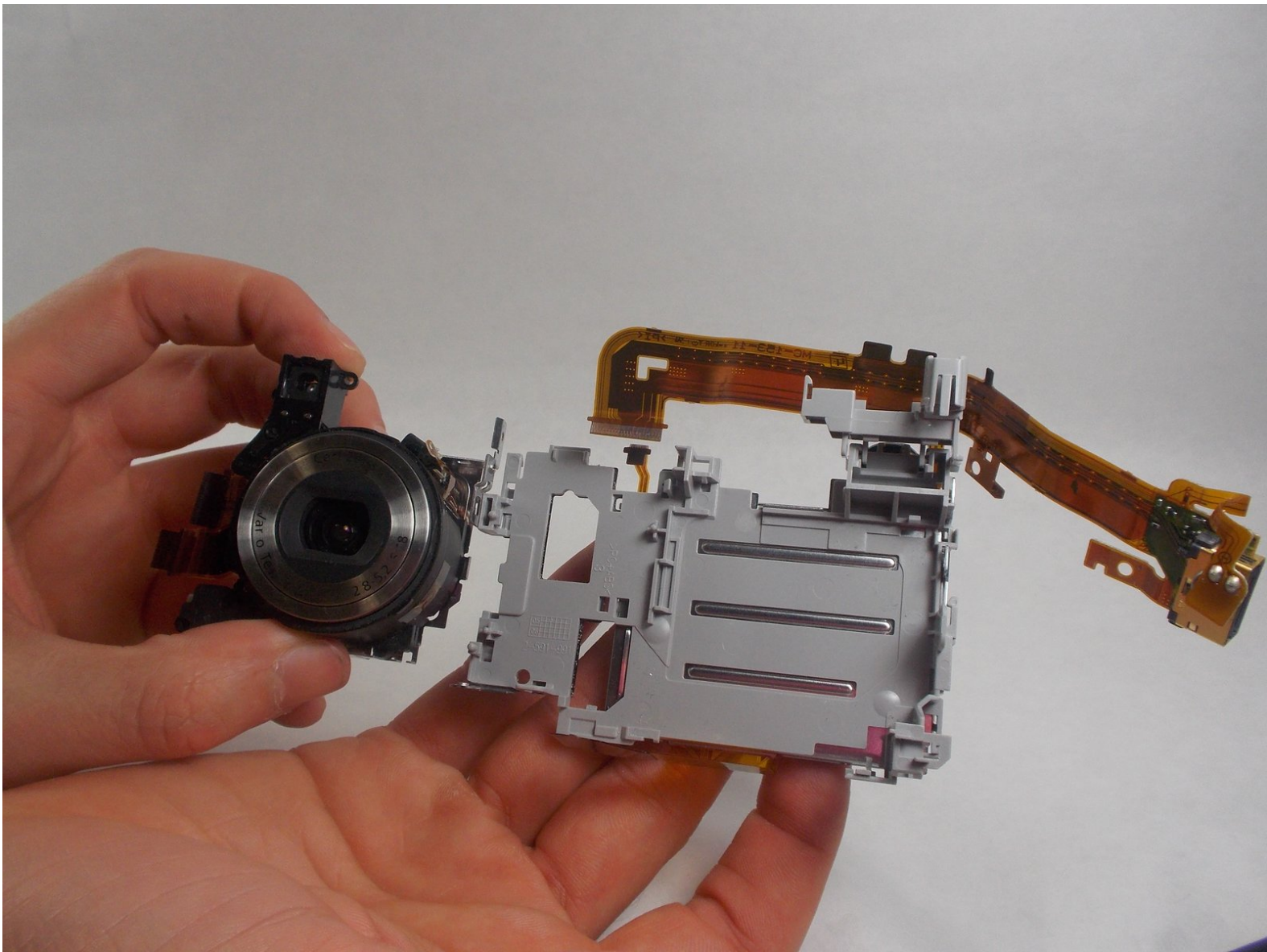




# Sony Cyber-Shot DSC-S90 Lens Replacement

This guide details the disassembly of a Sony Cyber-Shot DSC-S90 camera and specifically the replacement/removal of the lens.

Written By: Jonathan Arns



## INTRODUCTION

If your Sony Cyber-Shot (model DSC-S90) is failing to produce in-focus images—the focus is blurry or uneven across an image—or you see dark spots, use this guide to replace the lens of the camera.

Camera lenses work by collecting and focusing light reflected from the scene that the photographer wants to capture. A faulty or damaged lens will create dark spots on each image or cause pesky issues with the focus.

Before using this guide, clean your lens to make sure the problem is internal. Typically, smudges, fingerprints, and a small buildup of dust can be removed using a [dust blower](#) and [lens cleaning fluid with a microfiber cloth](#). Make sure to never put the cleaning fluid directly onto the lens, but to spray it onto the cloth. After cleaning, take some sample photos at various distances and observe the focus to confirm that the issues are from the lens itself. If you're not sure the lens is causing issues, review the [troubleshooting page](#).

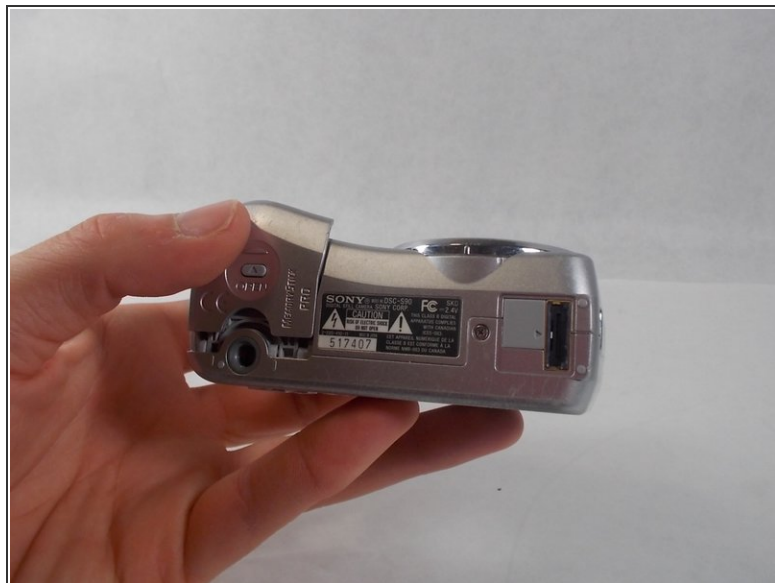
Before beginning, make sure to power off the camera and disconnect from any external power source.



### TOOLS:

- [Phillips #00 Screwdriver](#) (1)
  - [iFixit Opening Tools](#) (1)
  - [Spudger](#) (1)
-

## Step 1 — Batteries



- Hold down the "open" button (gray oval with arrow pointing upwards) on the battery port door.
- While holding the button downwards, slide the door upwards to unlock and open the door.

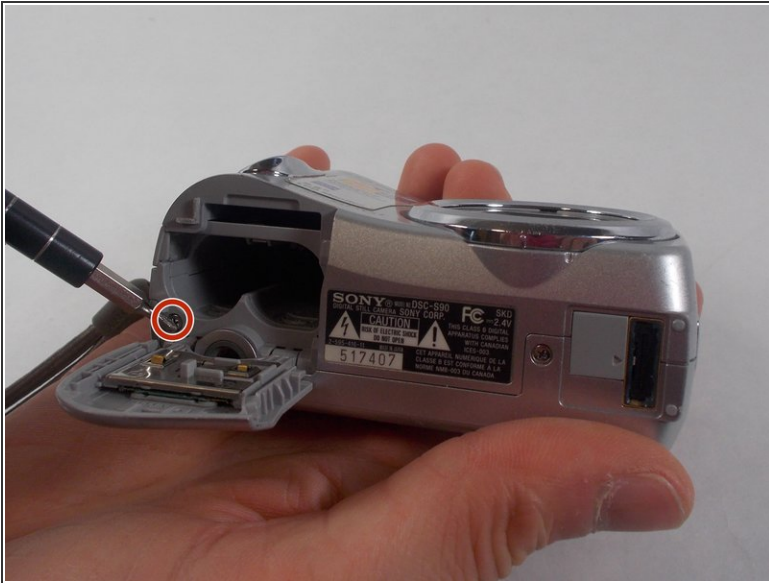
## Step 2



- Pull open the door and allow the batteries to fall out.

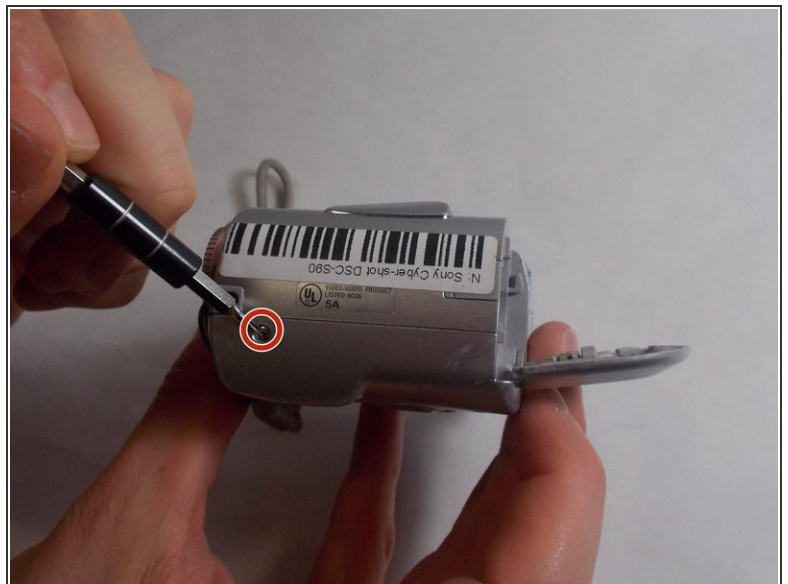


### Step 3 — Back Case



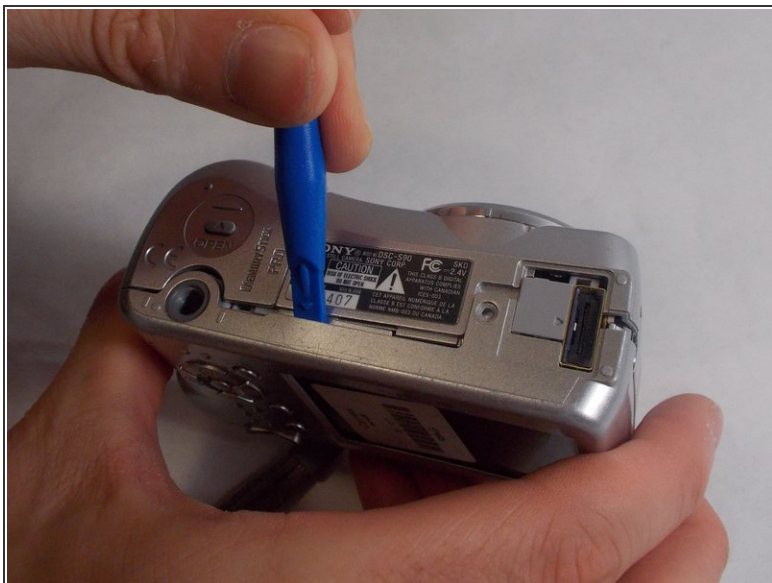
- Remove the 2mm Phillips #00 screw under the battery port door.
- Remove the 2mm Phillips #00 screw towards the right of the bottom-side of the camera.

### Step 4



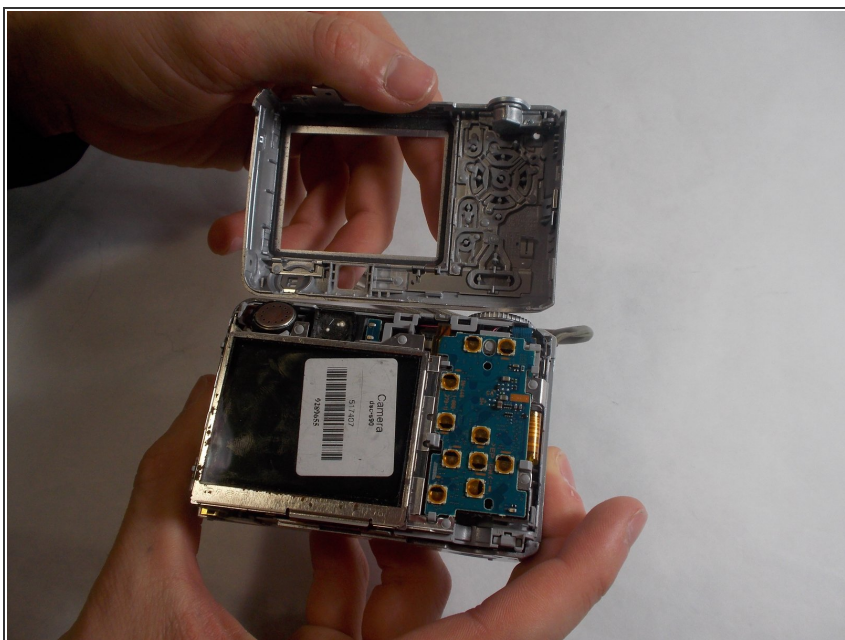
- Remove the two 2mm Phillips #00 screws (one on each side of the camera).

## Step 5



- Use an opening tool to unlock the front case from the main body of the camera. Use the tool on the right side and bottom of the camera with the LCD screen facing you.

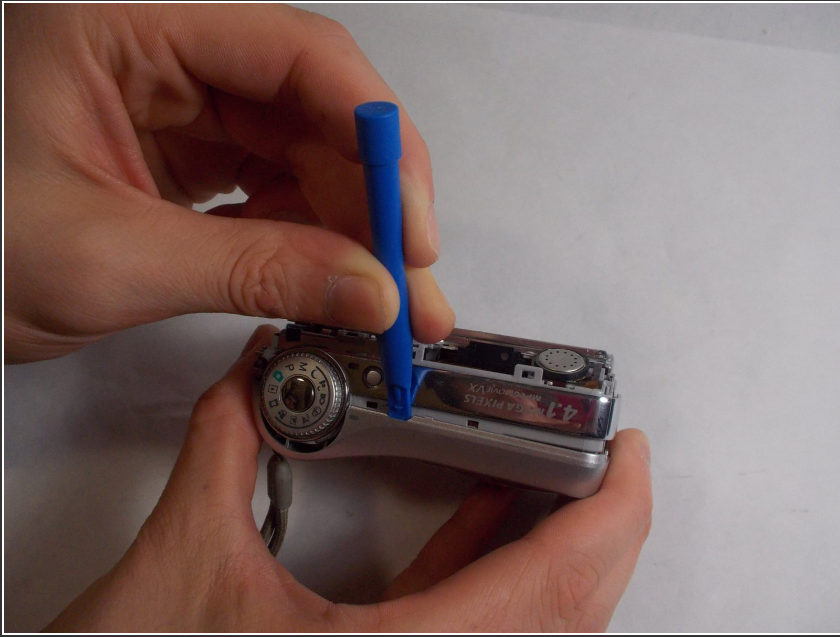
## Step 6



- Pull apart the back case from the main body of the camera.

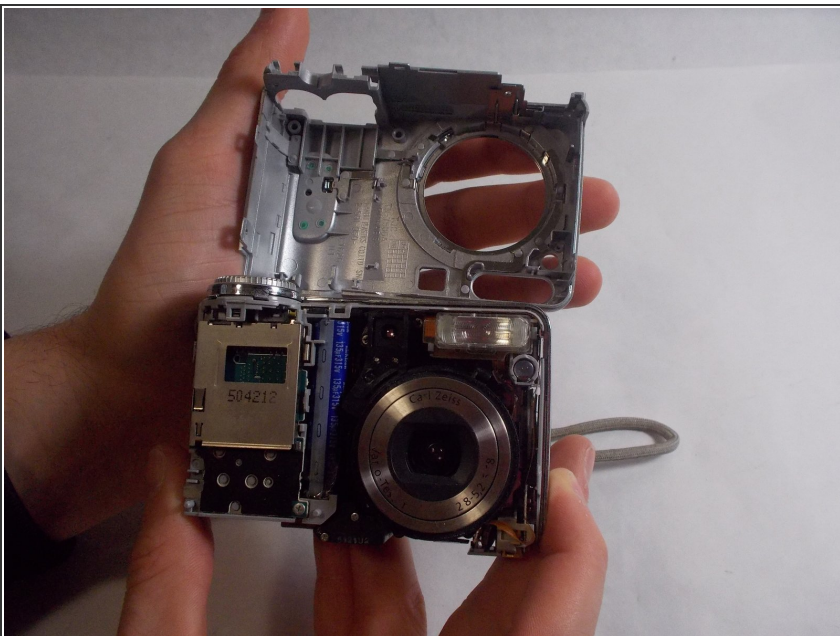


## Step 7 — Front Case



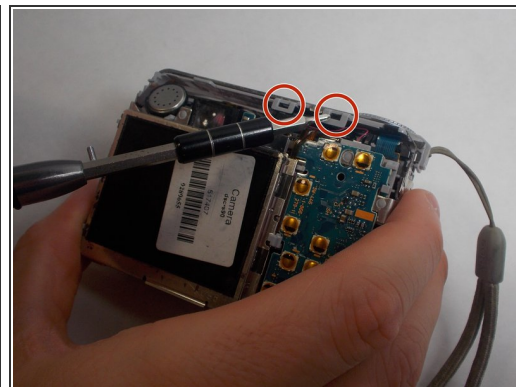
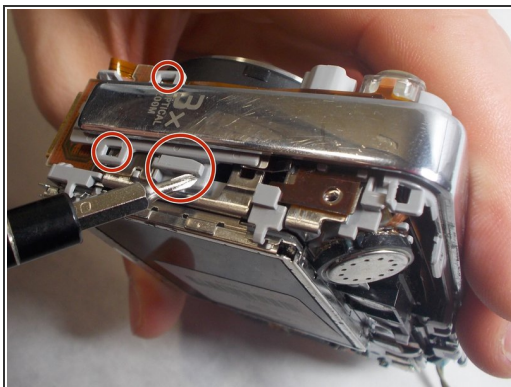
- Use an opening tool to unlock the front case from the main body of the camera. Use the tool on the top of the camera.

## Step 8



- Pull apart the front case from the main body of the camera.

## Step 9 — Top/Side Case



- Release all clips and latches keeping the casing in place using a spudger, opening tool, or screwdriver.

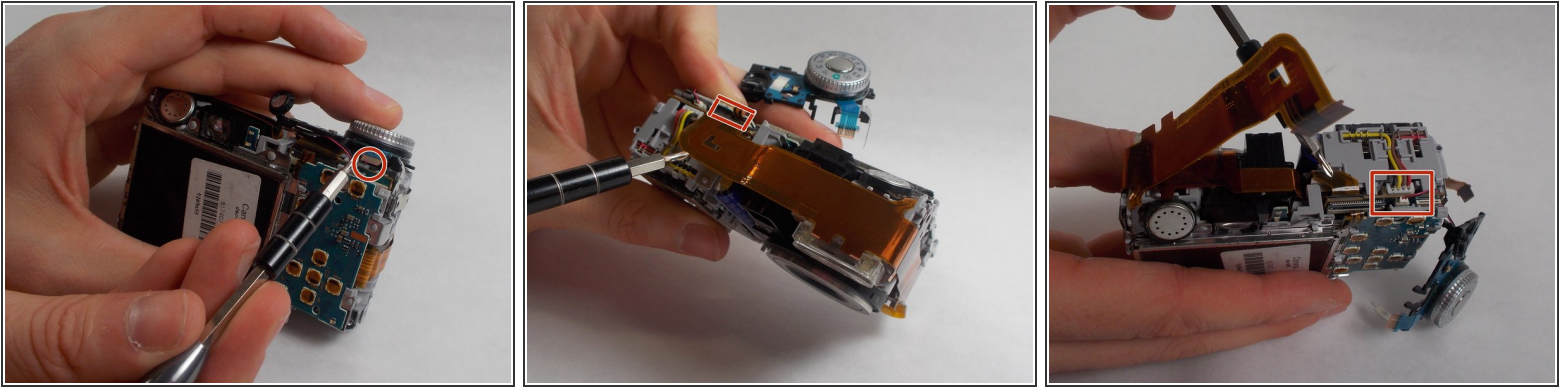
## Step 10



- Now the casing can be removed after all latches have been undone.

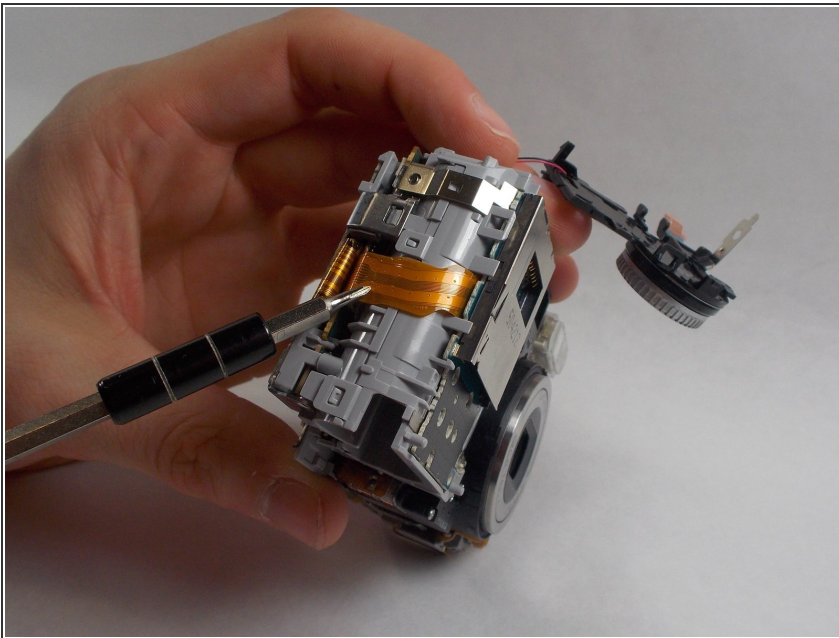


## Step 11 — Battery Terminal



- Disconnect the ribbon cables on top of the battery terminal using a spudger or screwdriver.

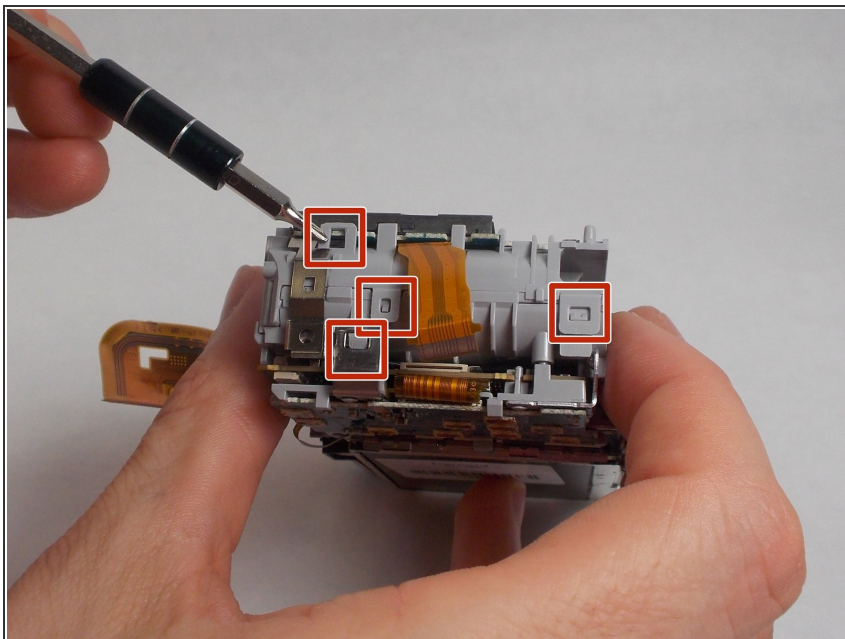
## Step 12



- Disconnect the remaining ribbon cable on the side of the camera using a spudger or screwdriver.

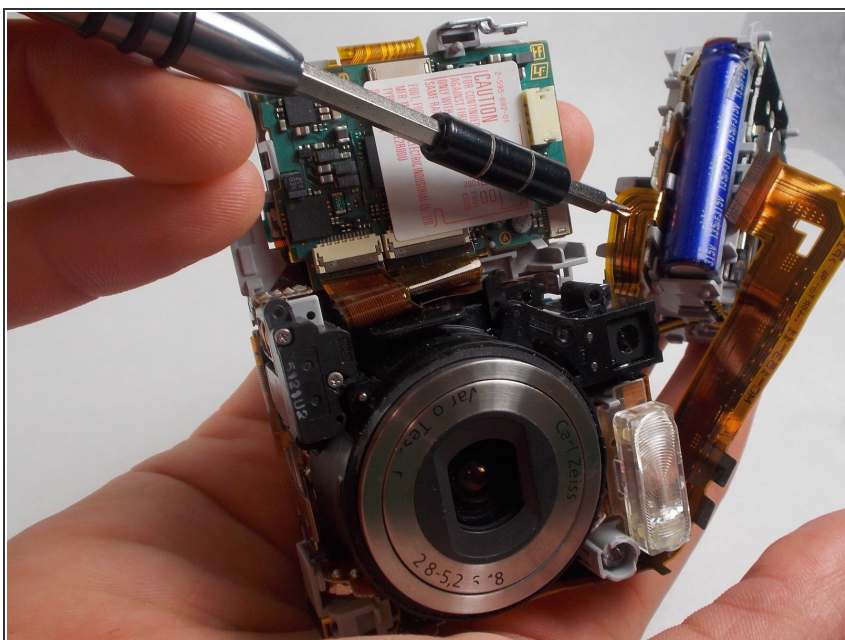


## Step 13



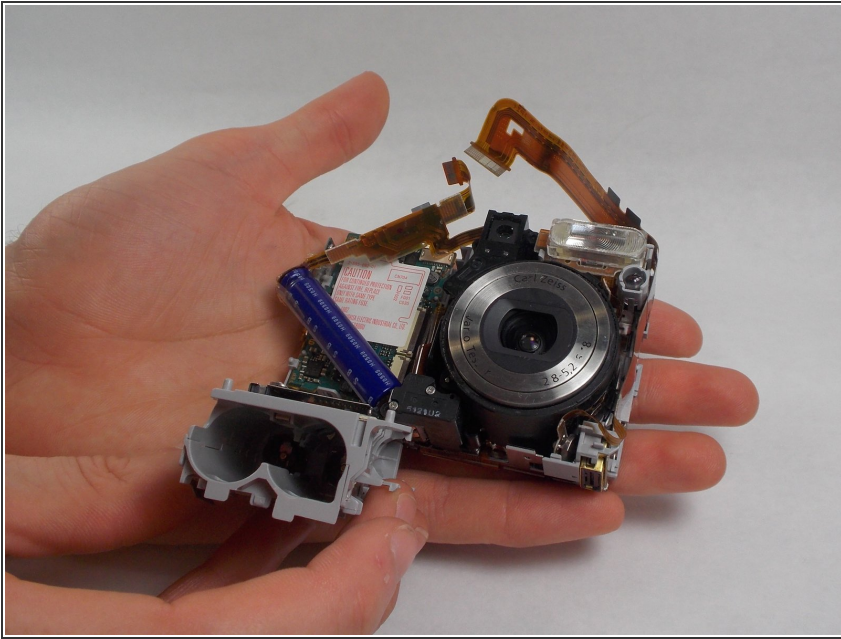
- Use a spudger or screwdriver to unhinge the clips. This releases the battery terminal.

## Step 14



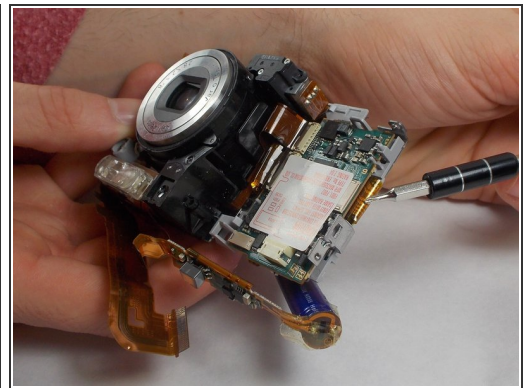
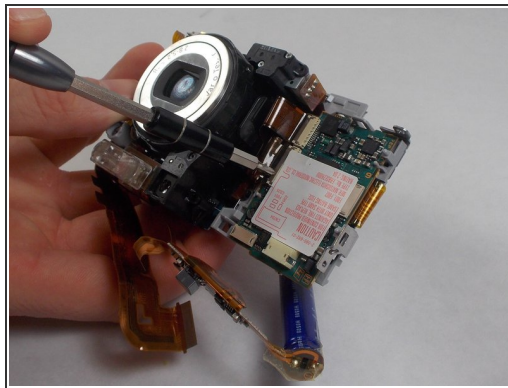
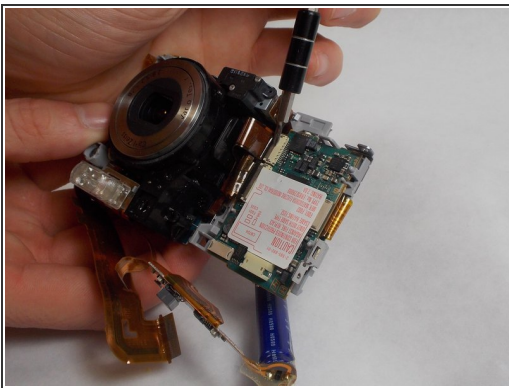
- Once the battery terminal is unclipped, pull this ribbon cable out with a spudger or screwdriver to finish freeing the battery terminal.

## Step 15



- Now the battery terminal can be separated from the main body of the camera.

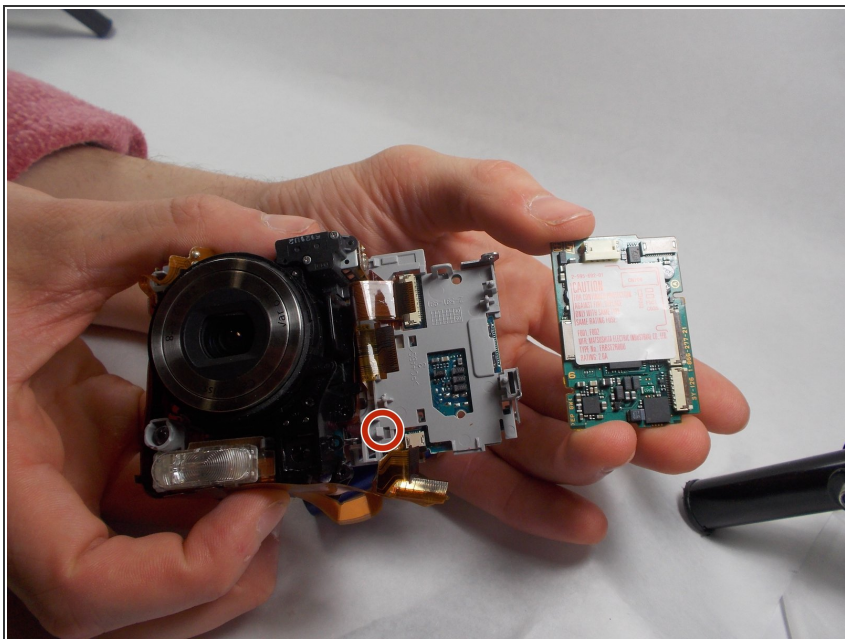
## Step 16 — Motherboard



- Disconnect the three pictured ribbon cables using a spudger or screwdriver.

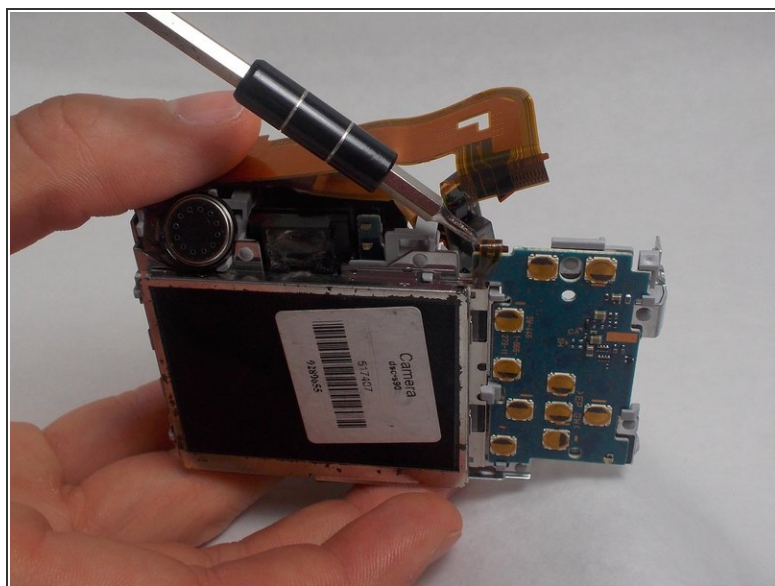
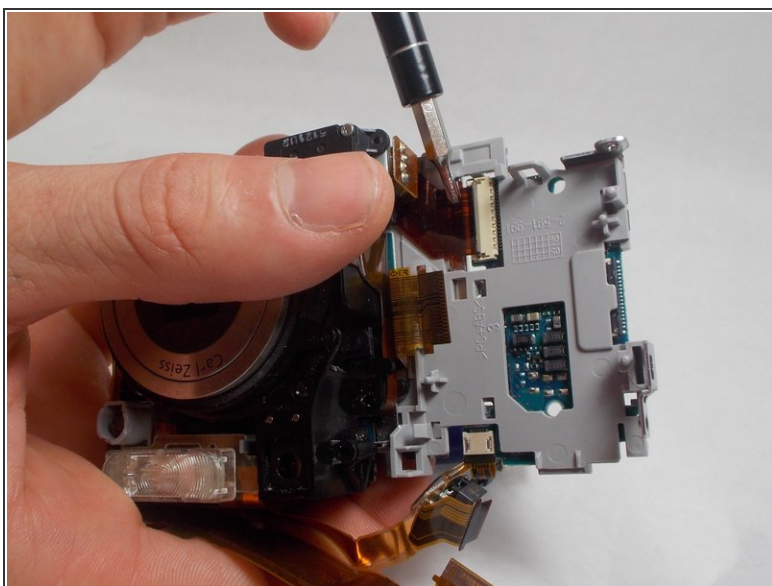


## Step 17



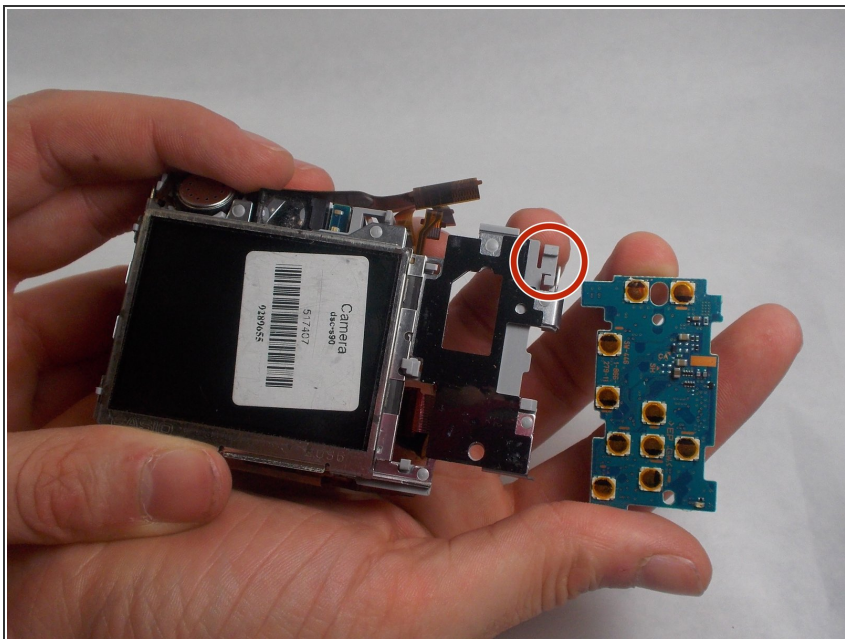
- Push the clip to the left and lift the motherboard upwards and away from the camera.

## Step 18



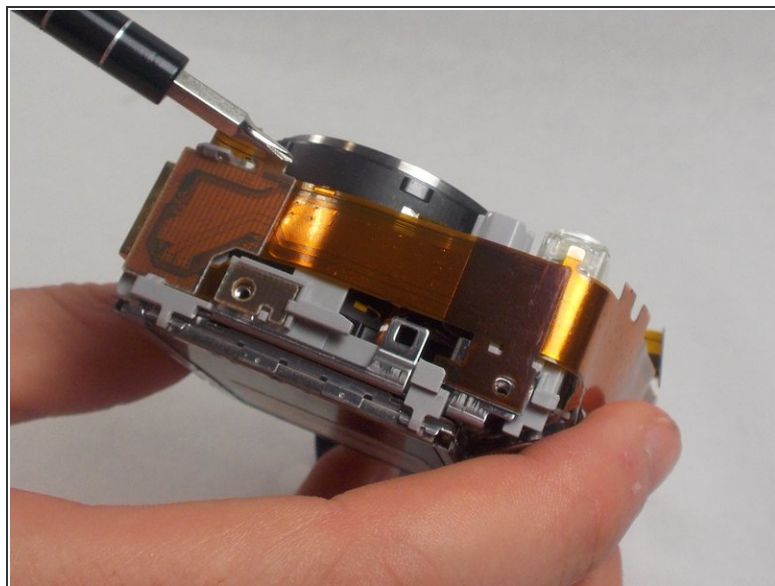
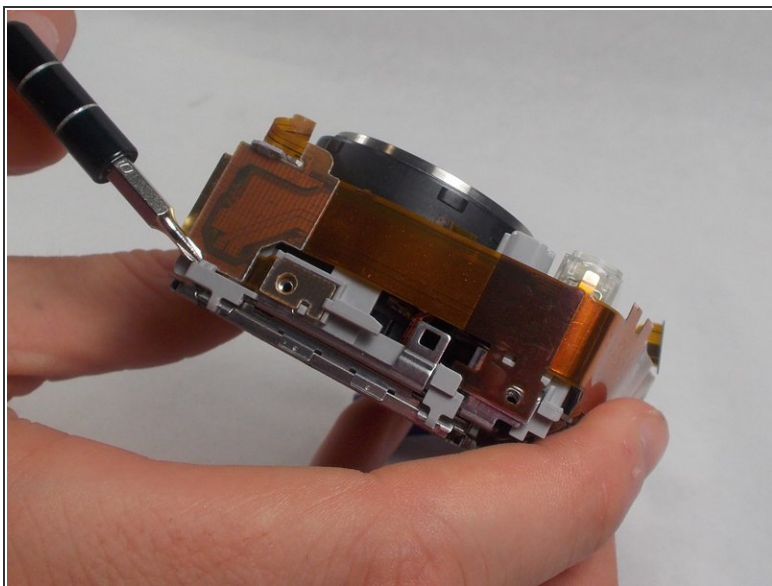
- Disconnect the two ribbon cables using a spudger or screwdriver.

## Step 19



- Unlatch the clip and lift the motherboard upwards and away from the camera.

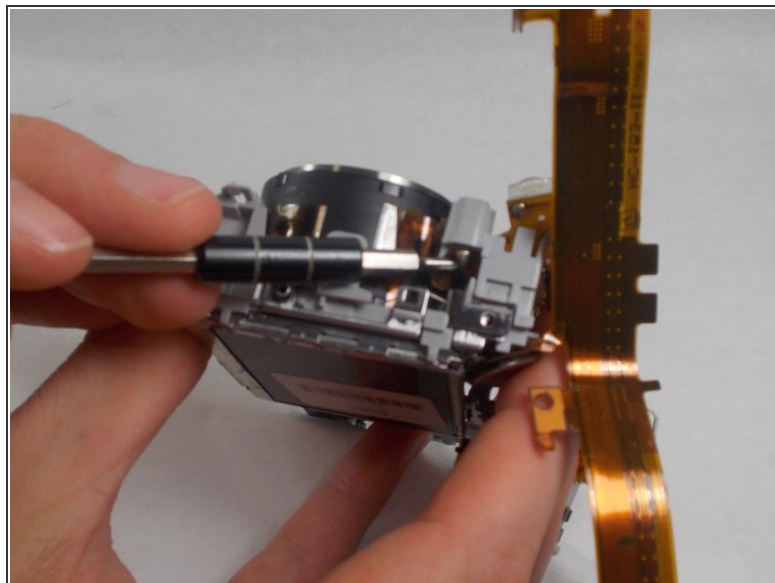
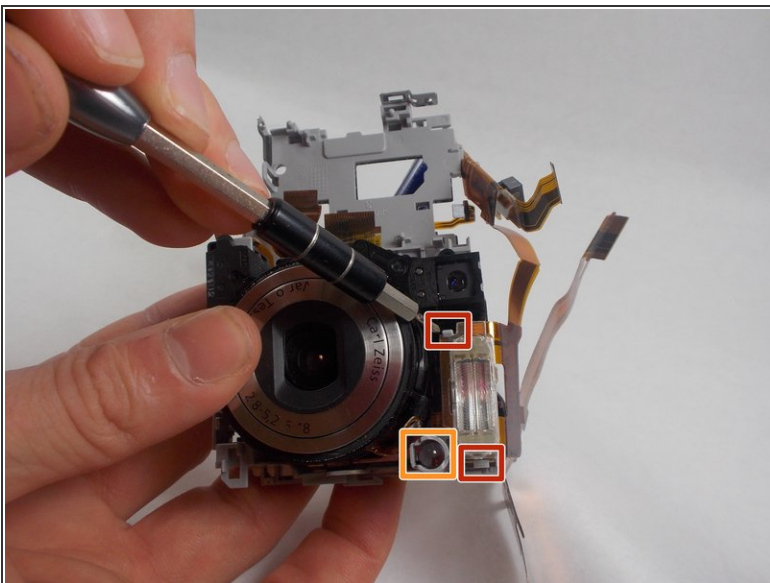
## Step 20 — Flash



- Release the clips on either side of the connector/ribbon cable using a spudger or screwdriver.

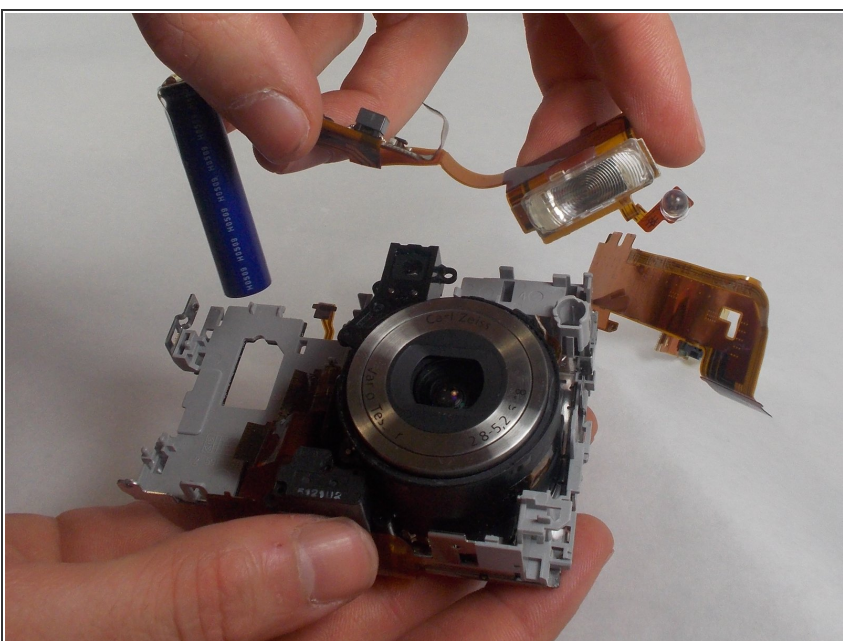


## Step 21



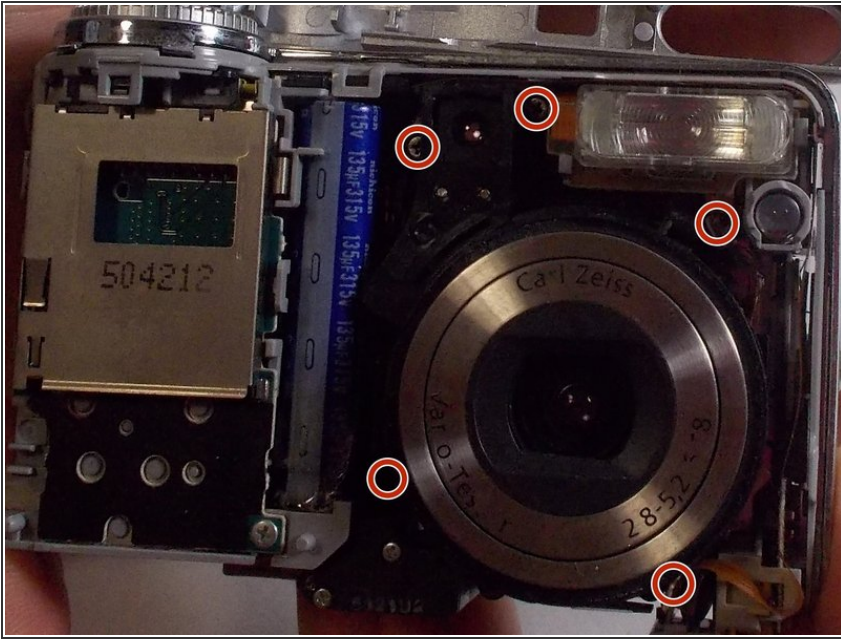
- Release the two clips next to the flash using a spudger or screwdriver.
- Release the clip holding the LED indicator in place using a spudger or screwdriver.
- Push the LED indicator upwards from below using a spudger or screwdriver.

## Step 22



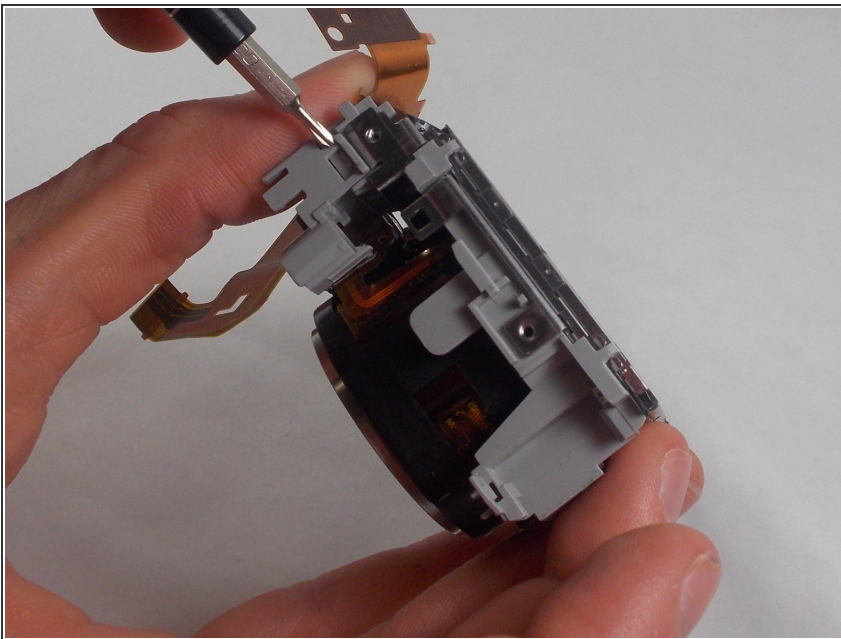
- After all clips have been undone the flash is free to be removed/replaced.

## Step 23 — Lens



- Remove five 2mm Phillips #00 screws surrounding the lens using a screwdriver.

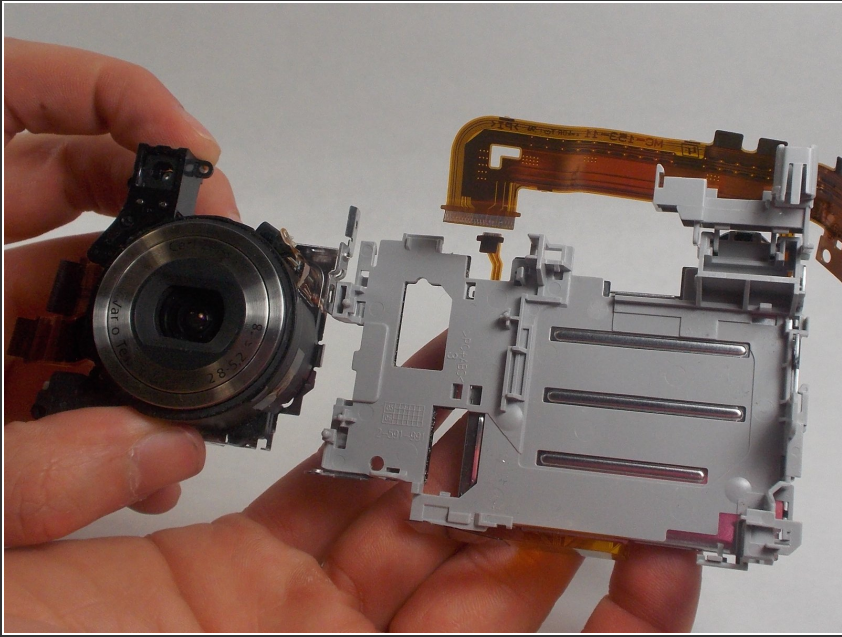
## Step 24



- Release the clip that holds the housing for the flash and LED in place using a spudger.
  - ⚠ The use of a screwdriver to release the clip as shown in the image is not advised, as any contact with the metal bit with any circuitry could result in a shorted board. Use an ESD safe tool instead!
- Rotate the housing backwards to free the lens.



## Step 25



- Remove the lens from the camera.

To reassemble your device, follow these instructions in reverse order.