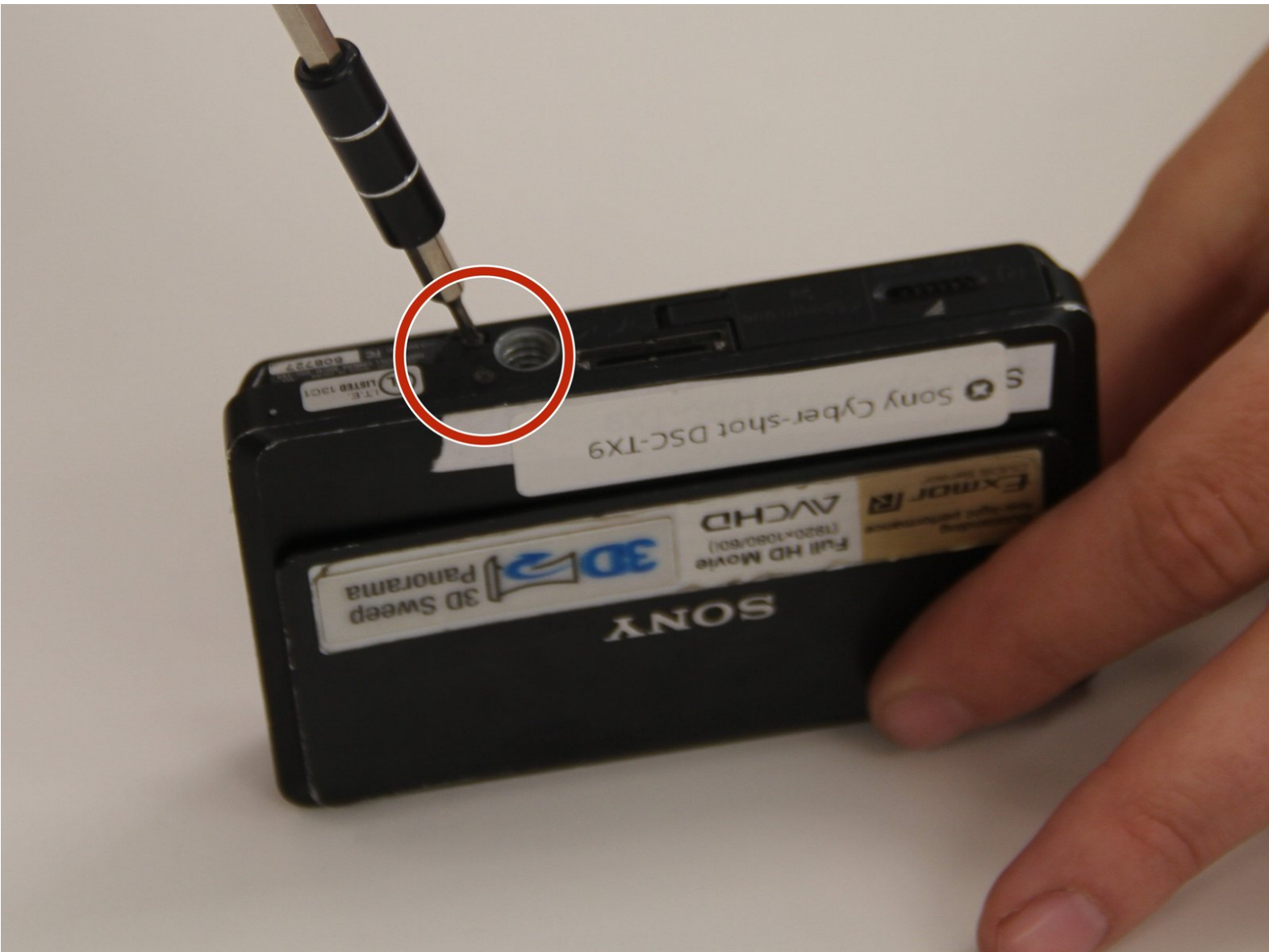




Sony Cyber-Shot DSC-TX9 LED Screen Replacement

This guide will help you replace a damaged or broken LED screen on a Sony Cyber-Shot DSC-TX9.

Written By: Melissa Pavelka



INTRODUCTION

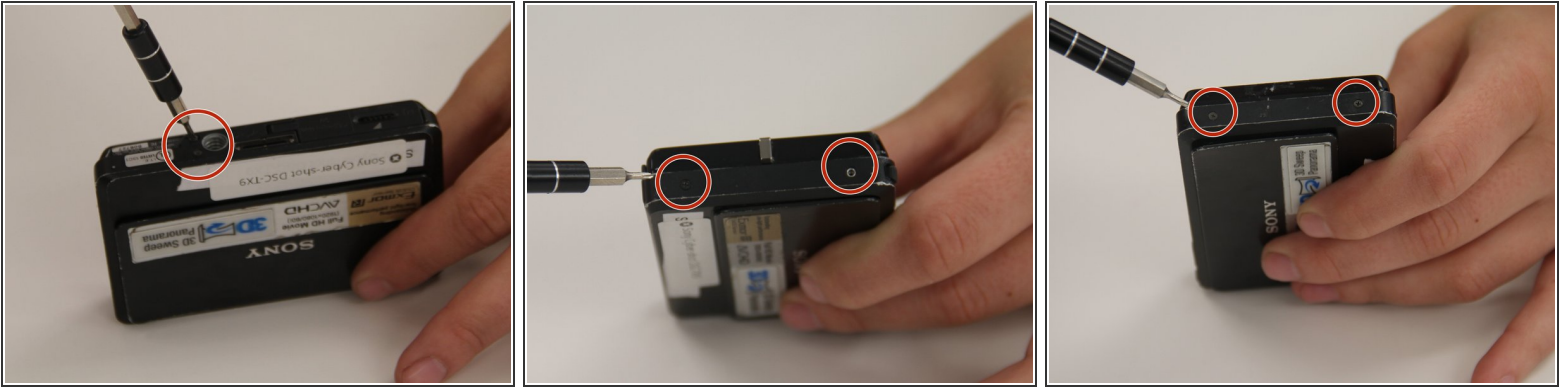
You will need a 001 screw driver and a pry stick for this repair.



TOOLS:

- [Phillips #00 Screwdriver](#) (1)
 - [iFixit Opening Tools](#) (1)
-

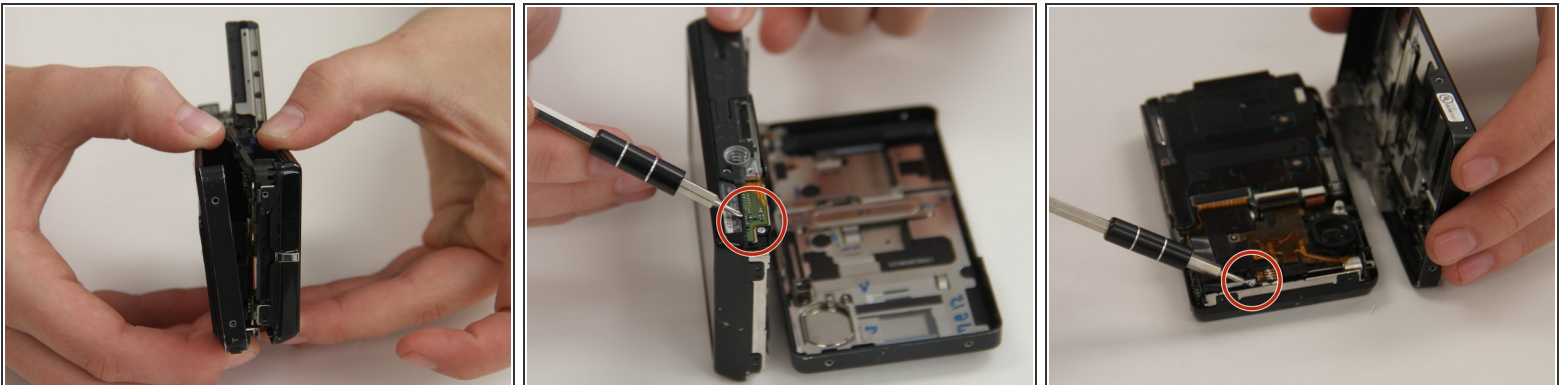
Step 1 — LED Screen



- Remove all screws on the outside of the camera. A total of 6 screws will be removed.

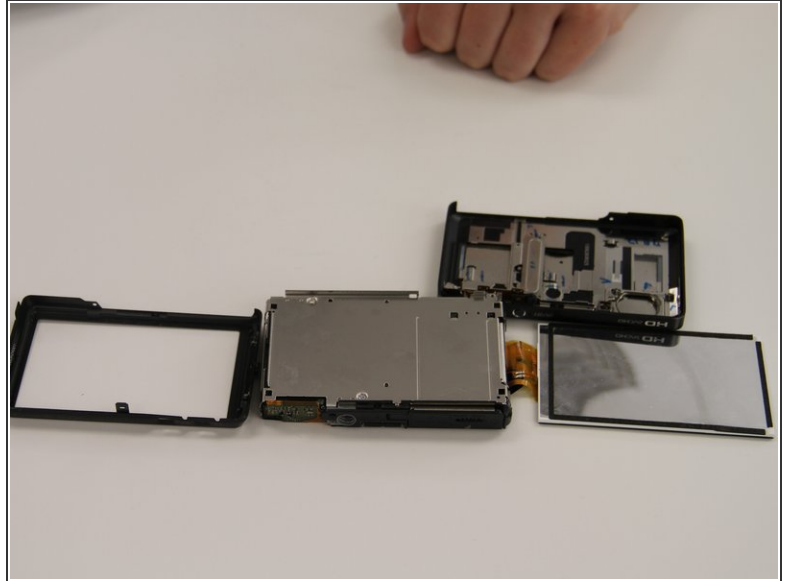
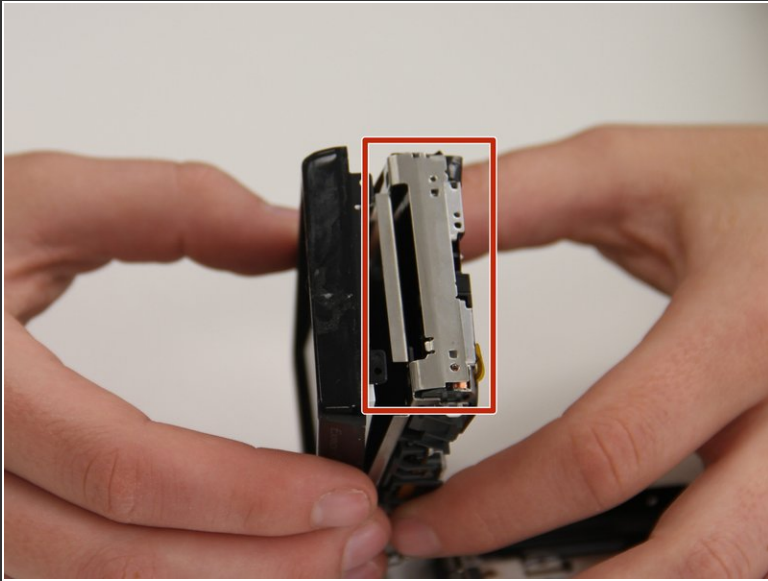
i Use a 0001 screw. Note: That the first two screws are in the first circle.

Step 2



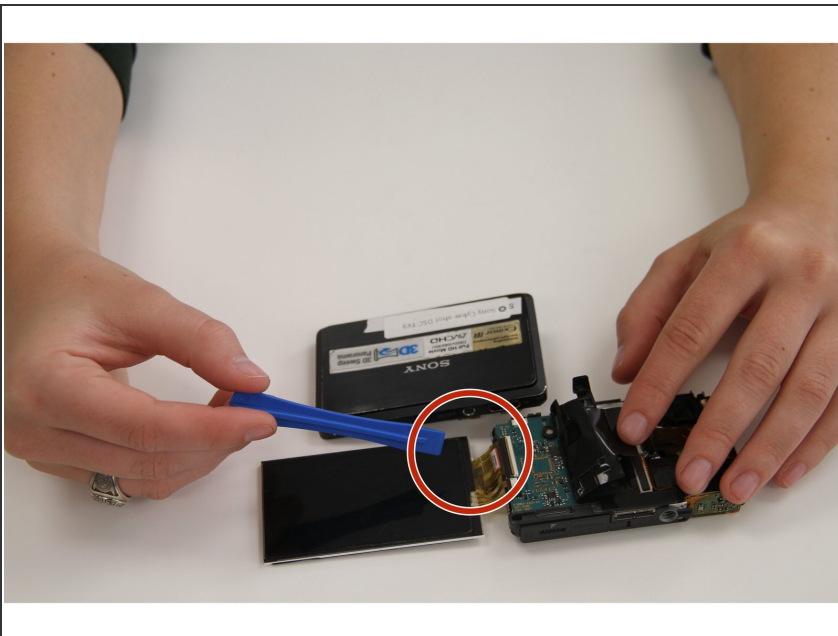
- Once all screws are removed slide open the battery cover.
- Pop off the front plate of the camera by moving the two pieces away from each other.
- i** The front plate will partially be attached to the body of the camera by a ribbon. Detach with caution.
- Next, remove the two silver screws on the inside of the camera.

Step 3



- Pop off the back plate of the camera by gently pulling the inner plate out.
- ⓘ After the back plate is removed, the camera should appear like the second picture. The LED screen should be free and accessible to replace.

Step 4



- Use a pry stick to pop out the connector ribbon attached to the LCD screen.
- ⓘ A pair of tweezers may be needed to pull back a black slit to access the ribbon connector.

Step 5



- Attach the new LCD screen.
- Follow the previous steps in reverse to put the camera back together.

To reassemble your device, follow these instructions in reverse order.