



Sony Cyber-Shot DSC-W120 LCD Screen Replacement

This guide will explain how to remove your camera's LCD display.

Written By: Christopher



INTRODUCTION

If the LCD display unit of your Sony Cyber-Shot DSC-W120 is damaged, this guide will walk you through the process of locating and removing it.



TOOLS:

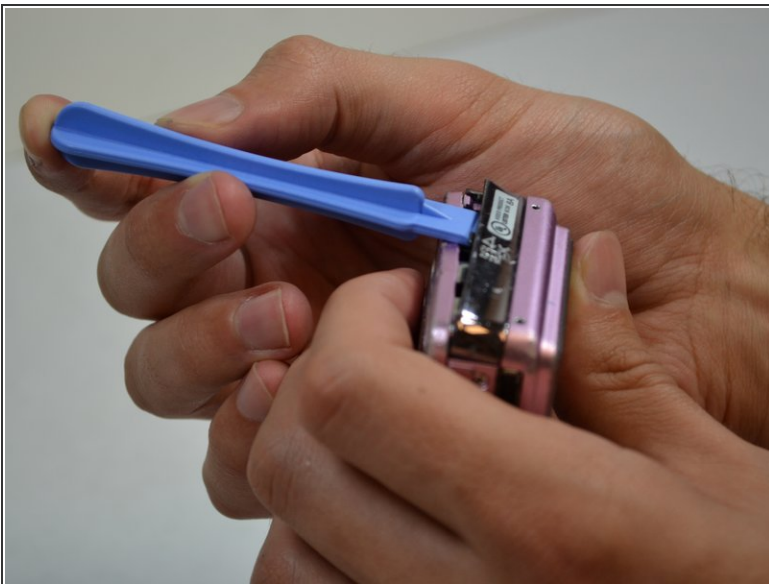
- [Phillips #00 Screwdriver](#) (1)
 - [iFixit Opening Tools](#) (1)
-

Step 1 — LCD Screen



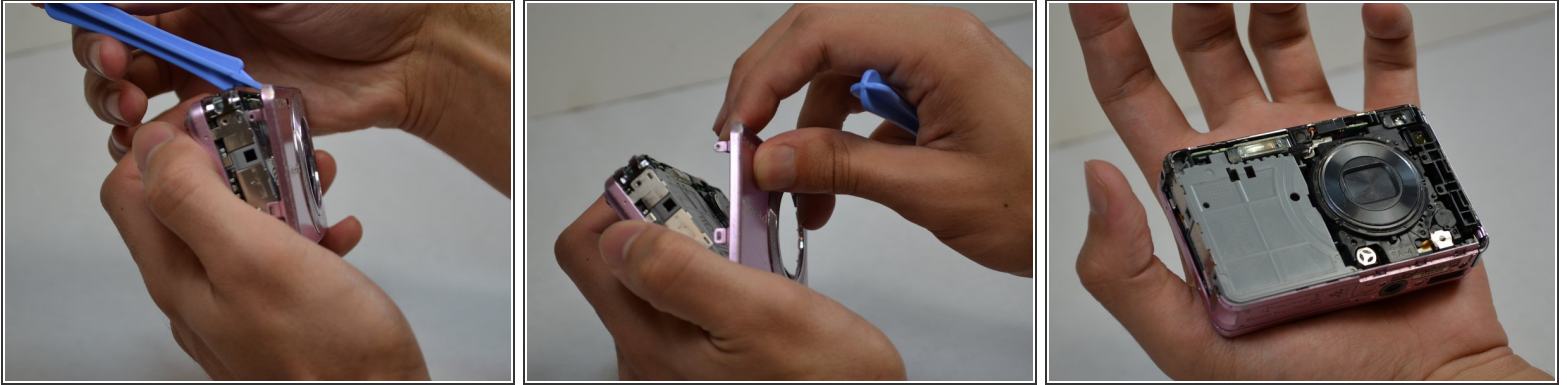
- Unscrew the screws on the right side of the camera.

Step 2



- With a plastic opening tool, gently lift and remove the silver piece on the right side of the camera.

Step 3



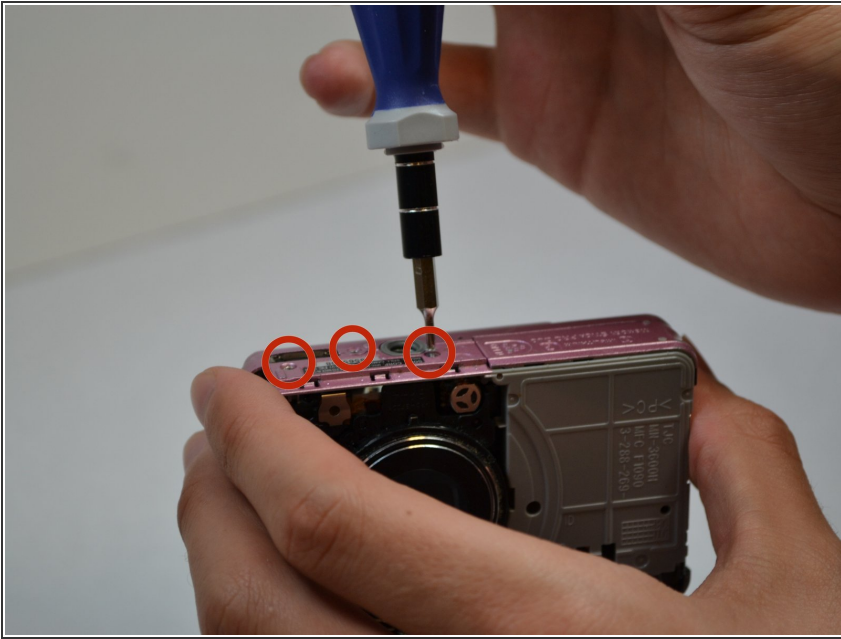
- Use a plastic opening tool to carefully lift and remove the front case.

Step 4



- Gently pry the silver piece on the left side of the camera off with a plastic opening tool.

Step 5



- Unscrew the three screws on the bottom of the camera.

Step 6



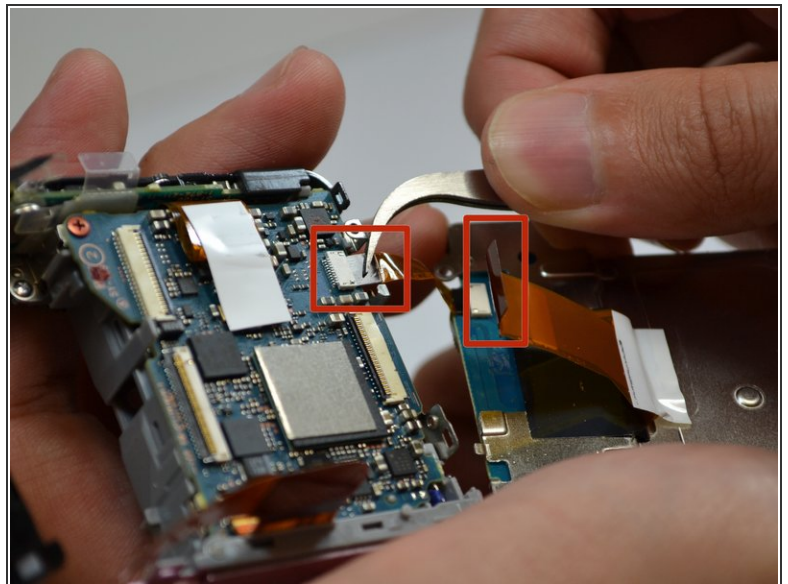
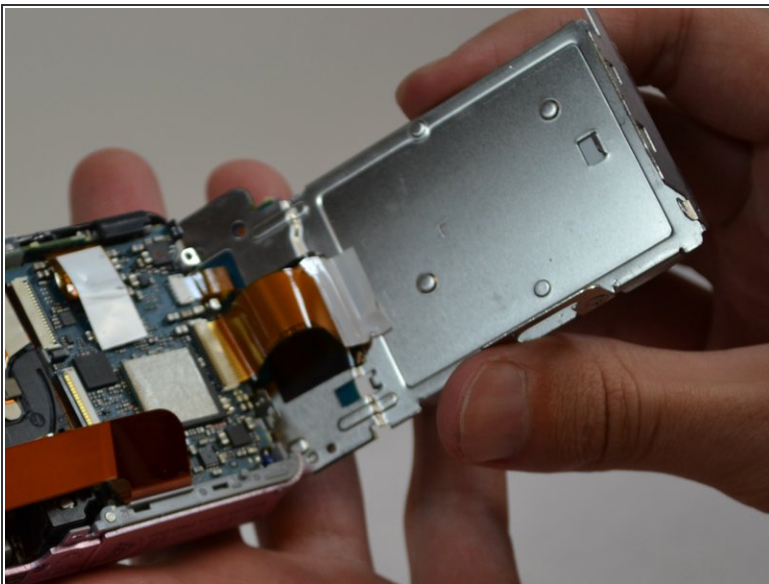
- Use a plastic opening tool to lift and remove the back case.

Step 7



- Remove the screw located above the mode dial.

Step 8



- Lift the LCD display from the rest of the camera.
- Use tweezers to carefully separate the connecting tape.

To reassemble your device, follow these instructions in reverse order.