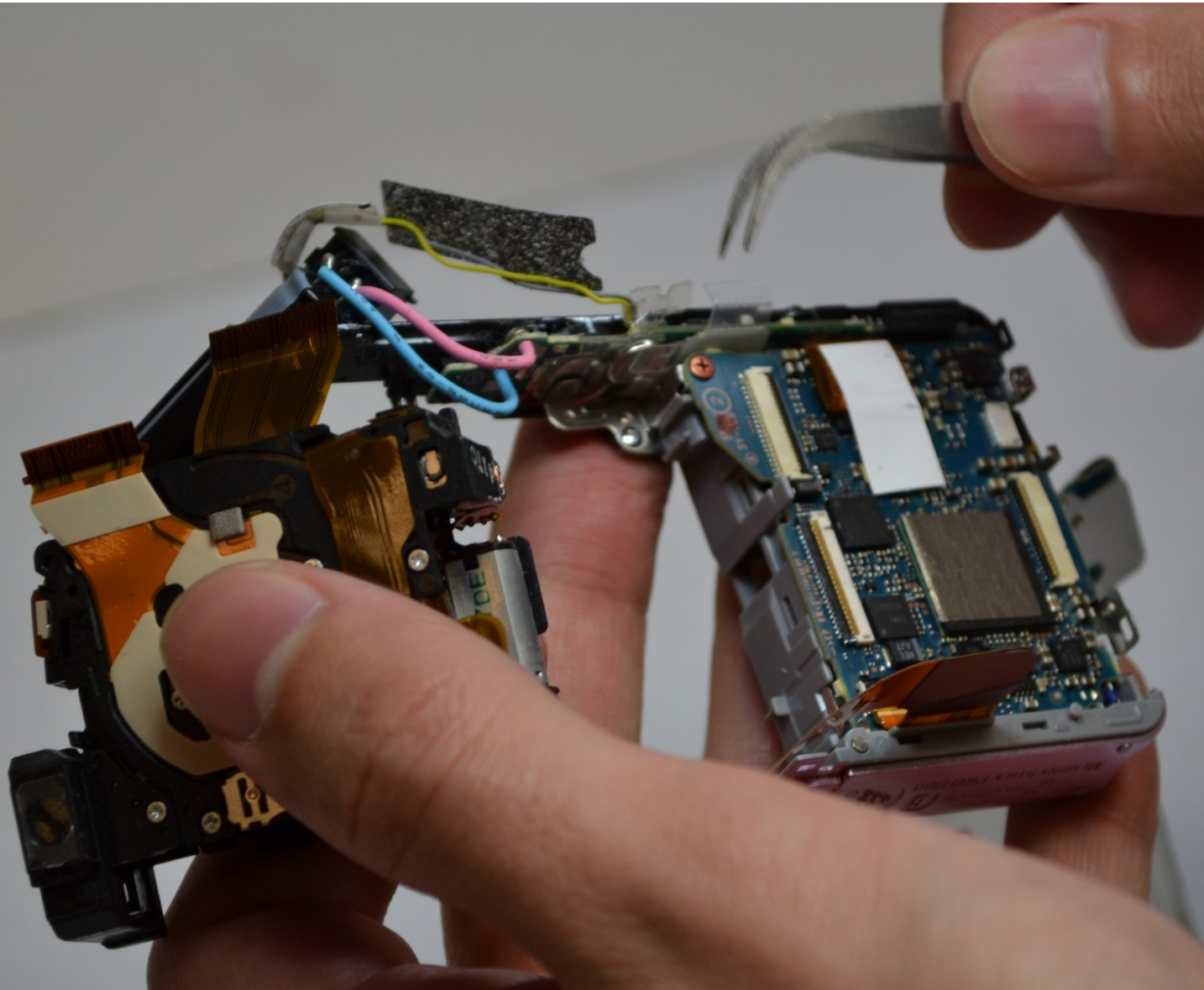




Sony Cyber-Shot DSC-W120 Lens Assembly Replacement

This guide will explain how to remove the camera's lens assembly so it can be replaced.

Written By: Dana Sanchez



INTRODUCTION

If the lens assembly of your Sony Cyber-Shot DSC-W120 is damaged, this guide will explain how to disassemble the camera so it can safely be removed.



TOOLS:

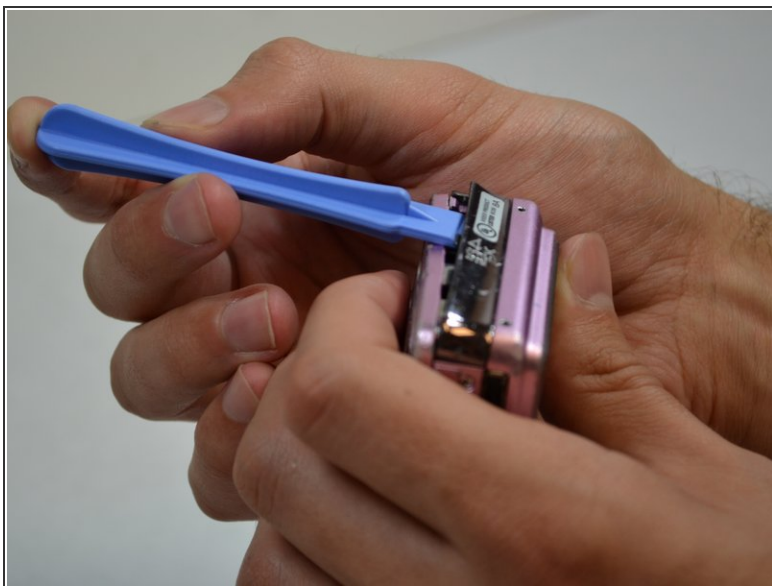
- [Phillips #00 Screwdriver](#) (1)
 - [iFixit Opening Tools](#) (1)
-

Step 1 — Lens Assembly



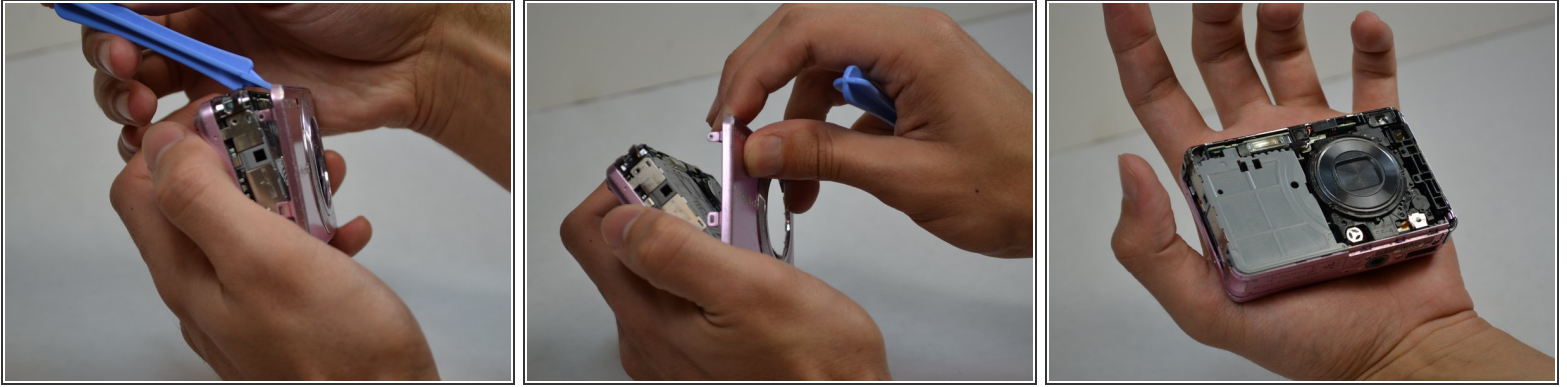
- Unscrew the screws on the right side of the camera.

Step 2



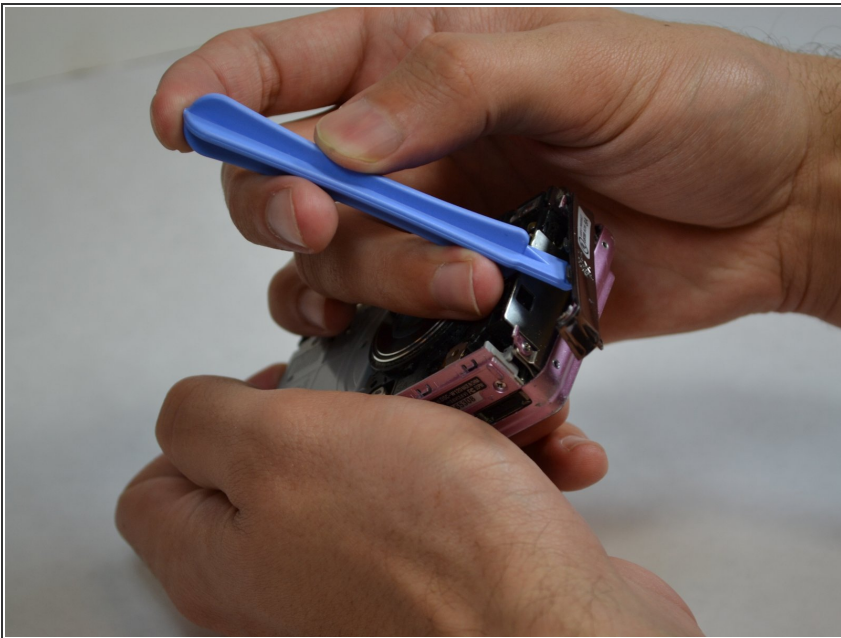
- Using a plastic opening tool, gently lift the side of the silver piece on the right side of the camera until it can be removed.

Step 3



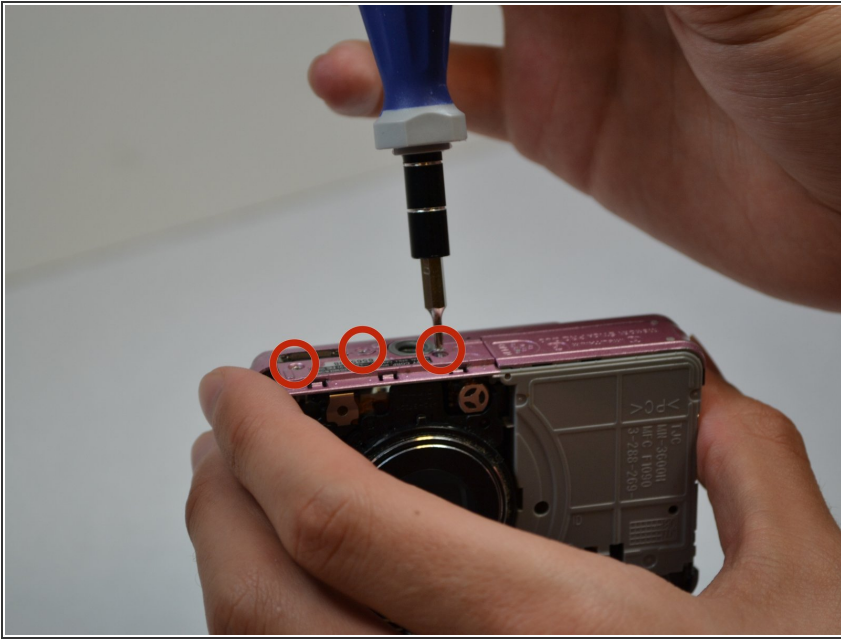
- Use a plastic opening tool to separate the front case of the camera, and gently remove it.

Step 4



- Use a plastic opening tool to remove the silver piece on the left side of the camera.

Step 5



- Remove the three screws from the bottom of the camera.

Step 6



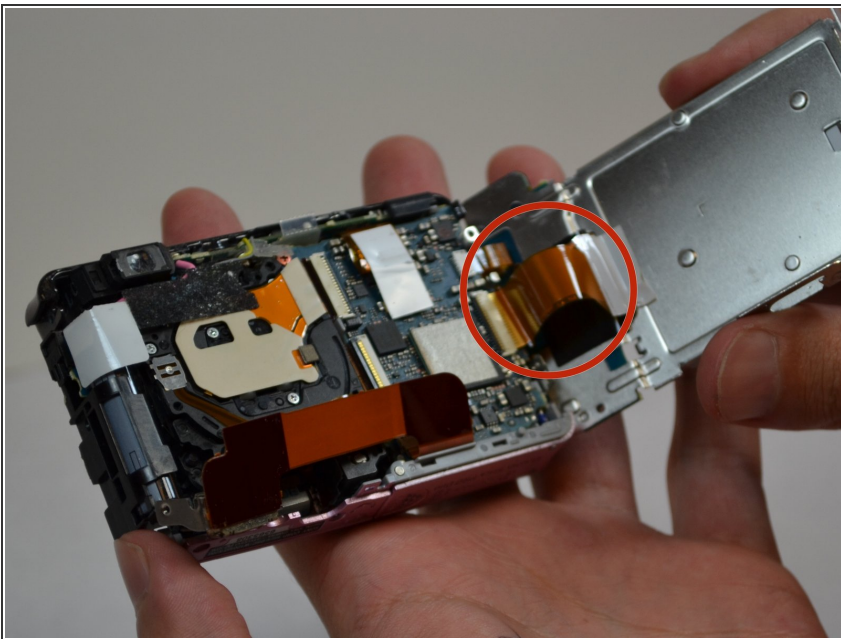
- Carefully remove the back case with a plastic opening tool.

Step 7



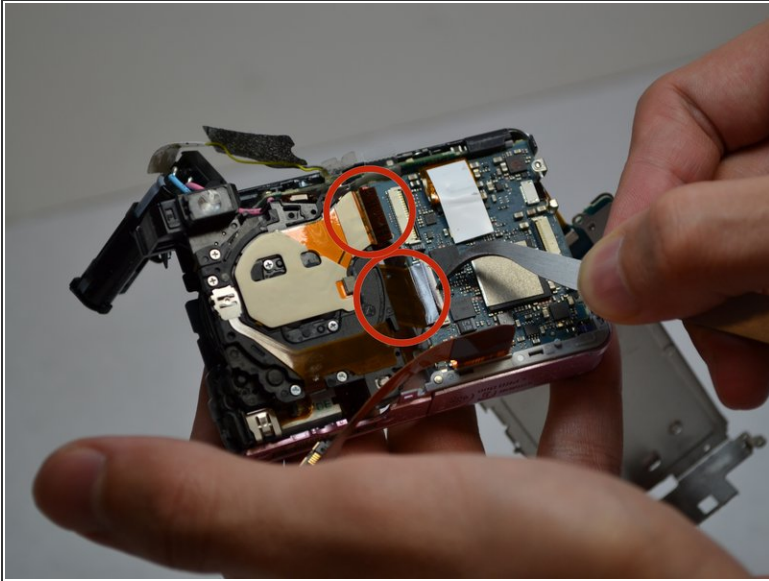
- Unscrew the screw just above the mode dial.

Step 8



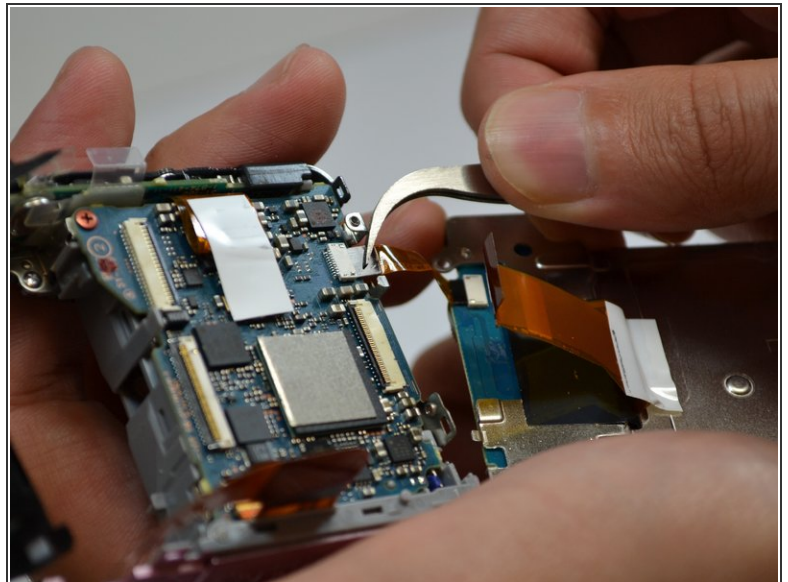
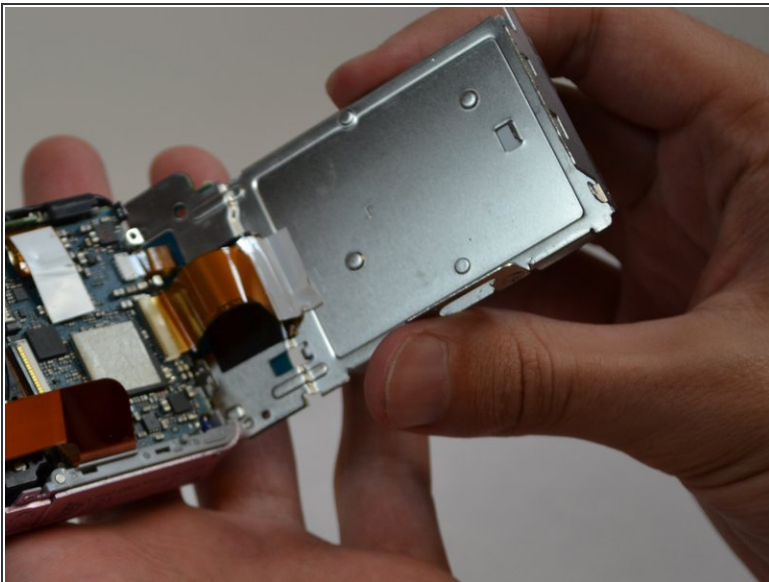
- Lift the display from the rest of the camera and gently separate the connecting tape using tweezers.

Step 9



- Separate the tape connecting the lens to the rest of the camera using tweezers.
- Remove the lens.

Step 10



- Insert wisdom here.

Step 11



- Insert wisdom here.

To reassemble your device, follow these instructions in reverse order.