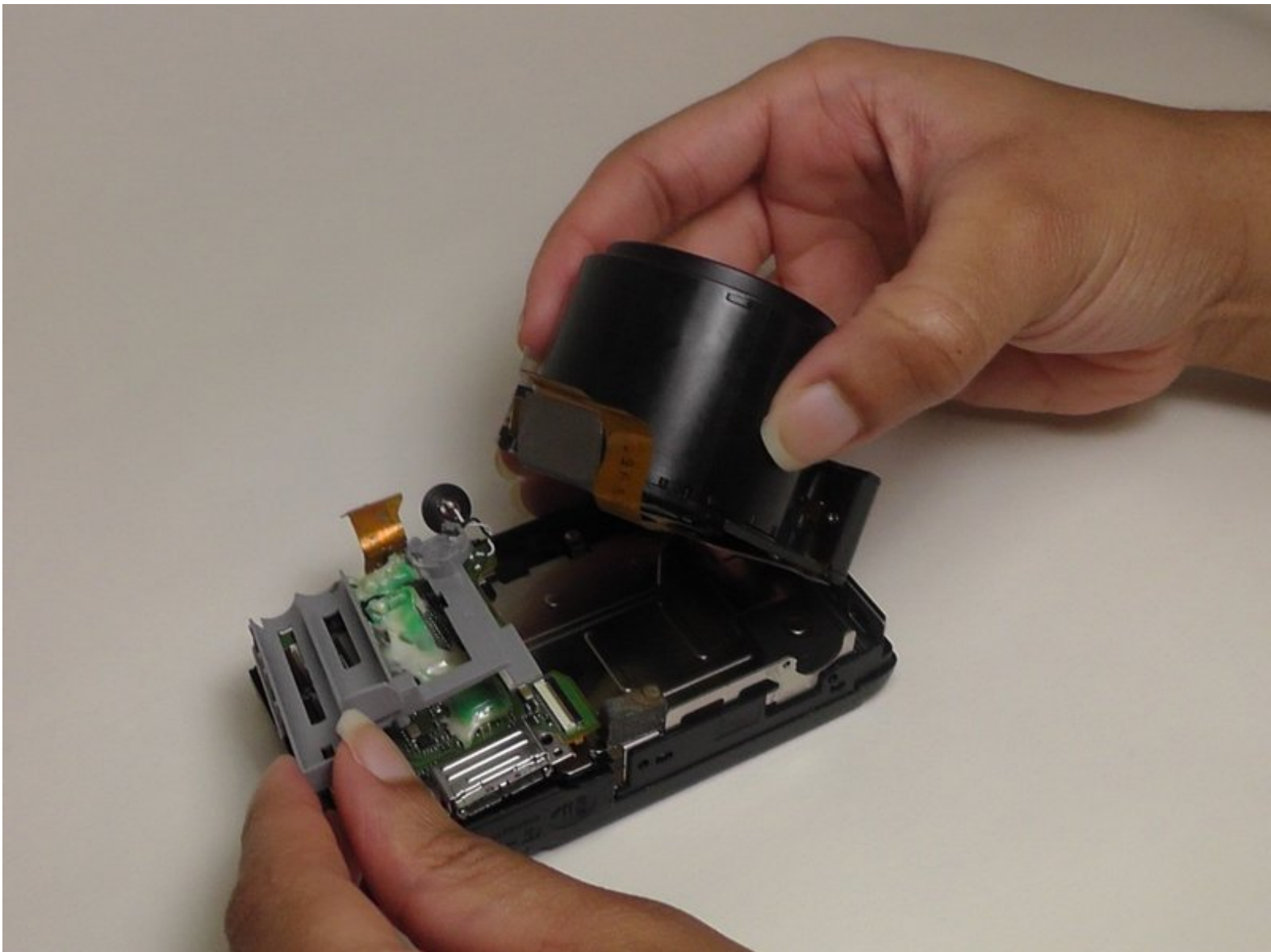




# Sony Cyber-shot DSC-H20 Lens Assembly Replacement

This guide provides a step-by-step process of how to replace the lens of this camera with a new one.

Written By: Rachel Payne





## TOOLS:

- [Essential Electronics Toolkit \(1\)](#)
-

## Step 1 — Lens Assembly



- Slide open the battery cover and remove the battery and the Memory Stick Duo.
- Return the battery cover to its closed position.

## Step 2



- Remove all three screws from the bottom of the camera.

### Step 3



- Remove the screws on the left and right sides of the camera.

### Step 4



- Press down on the flash cover to raise the flash.
- Remove both screws that hold the flash cover to the body of the camera.



## Step 5



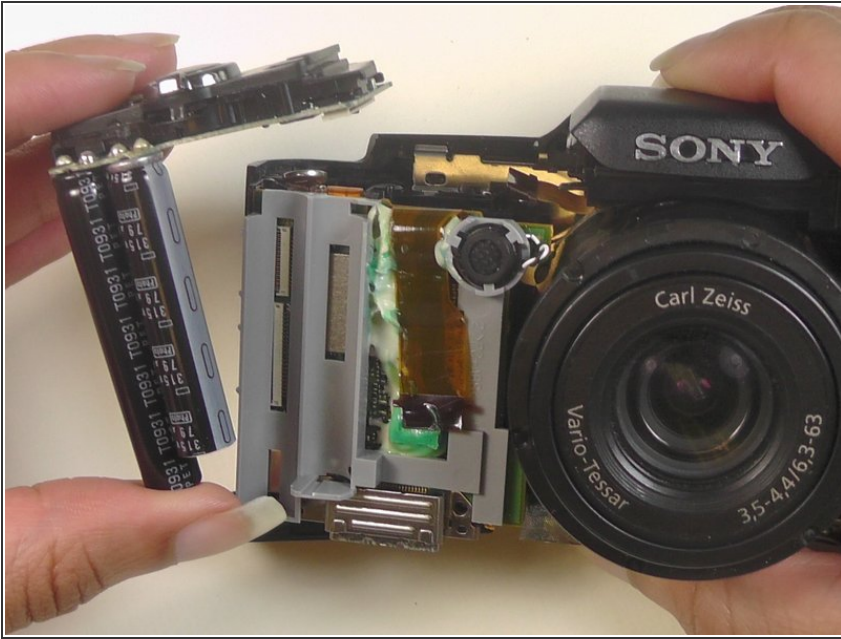
- Place the camera upside down with the battery port positioned upward and the battery port open.

## Step 6



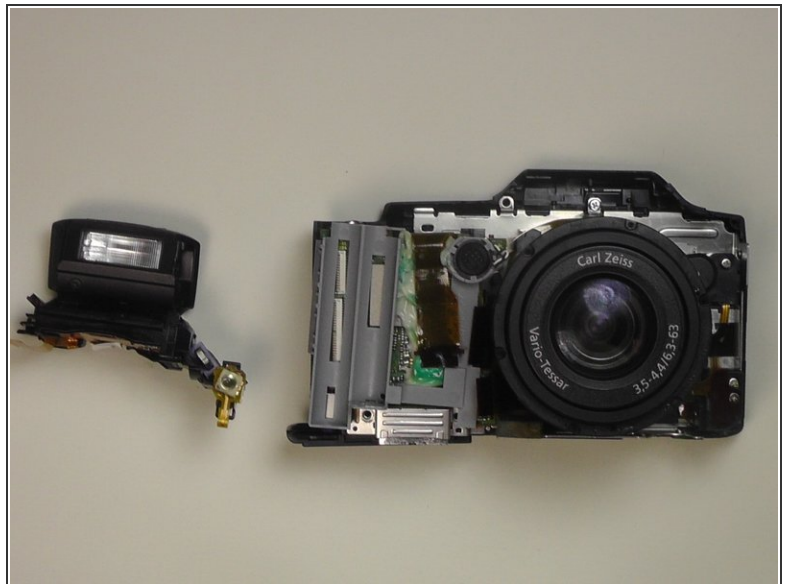
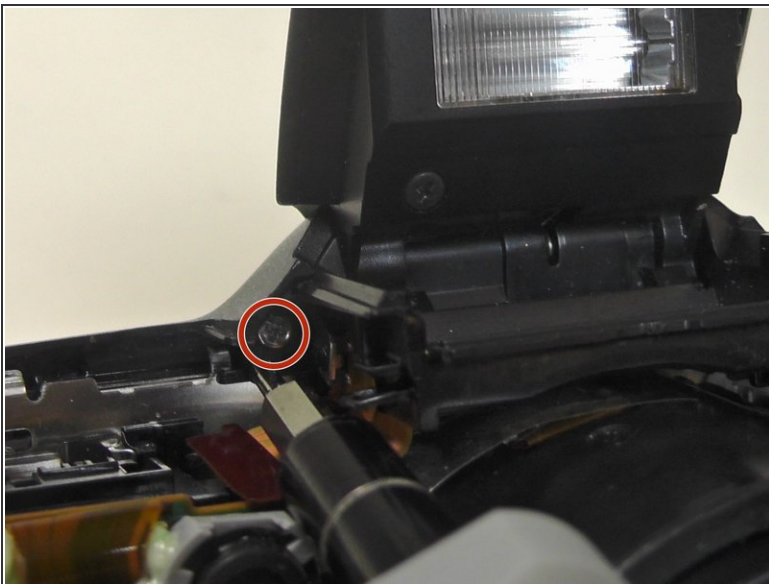
- Pry the front cover of the camera off with the plastic opening tool.

## Step 7



- Remove the power shutter unit

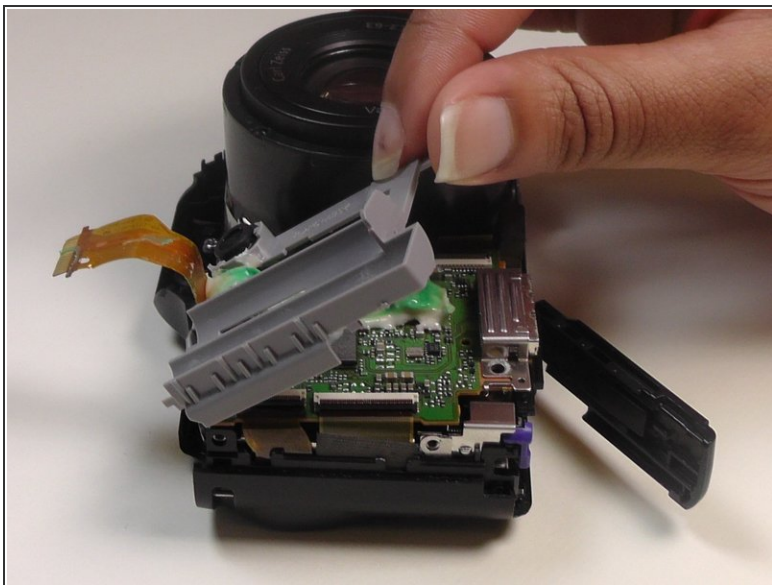
## Step 8



- Unscrew the screw located at the back left corner of the flash component.
- Set the flash component aside.

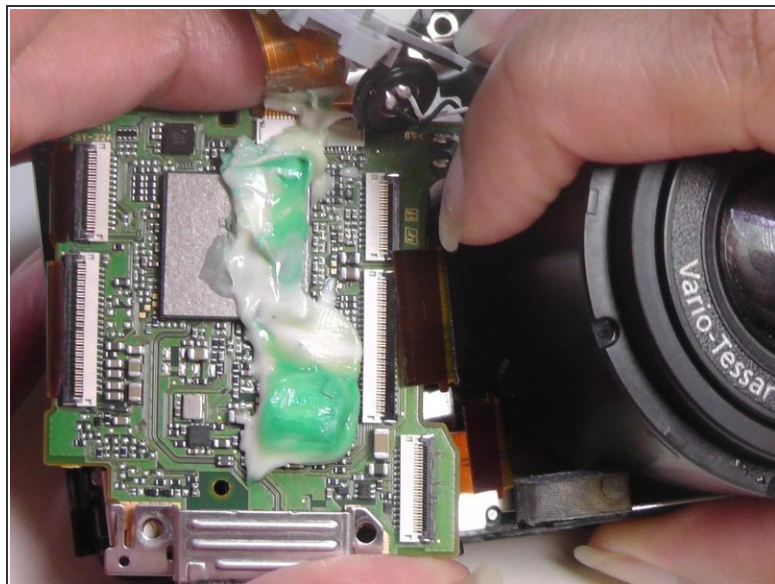
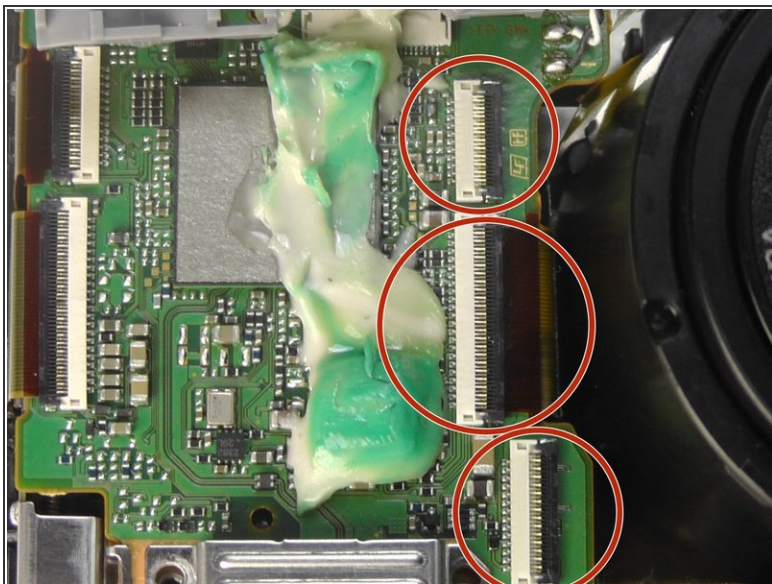


## Step 9



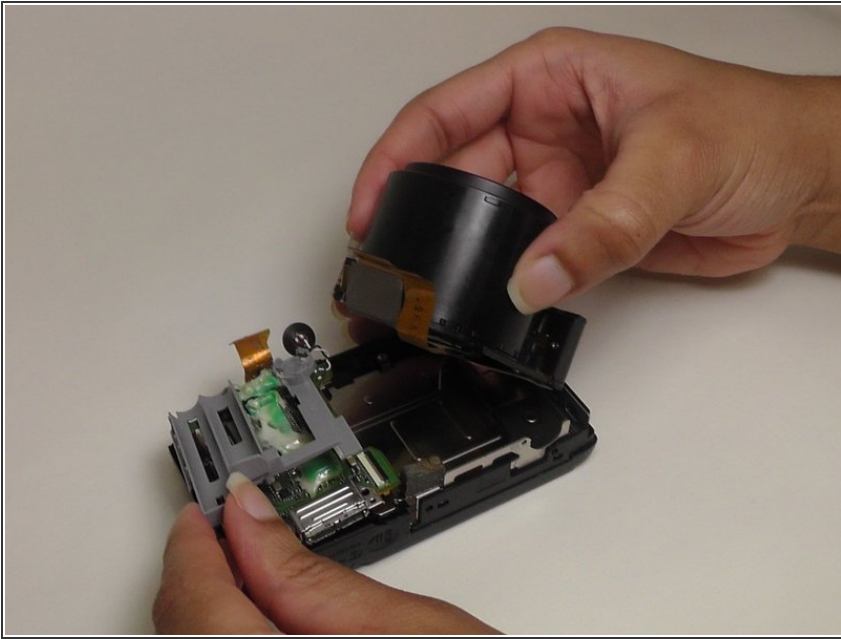
- Lift up the gray plastic facing in order to uncover the motherboard and the ribbon cable ports.

## Step 10



- Carefully flip up the three black clasps holding the lens cables to the motherboard.
- Slide the cables from the ports.

## Step 11



- Lift the lens and attached ribbon cables from the camera in order to switch this lens with a new one.

To reassemble your device, follow these instructions in reverse order.