



# Sony Cyber-shot DSC-H200 Tripod Port Replacement

This guide will provide you with information about replacing the tripod port in the event that it has been damaged.

Written By: Chantilly Higbee



---

## INTRODUCTION

The tripod port may be loose, broken or faulty. In any case, replacement of the tripod port involves first removing the LCD Screen and the Motherboard. Please refer to the LCD Screen prerequisite guide and the Motherboard prerequisite guide for proper removal of the LCD Screen and the Motherboard.



### TOOLS:

- [Tweezers](#) (1)
  - [64 Bit Driver Kit](#) (1)
  - [Magnetic Project Mat](#) (1)
-

## Step 1 — LCD Screen



- Using a screwdriver, remove the five 6mm screws located on the back panel.
- Using a screwdriver, remove the two 3mm screws located on the back panel.

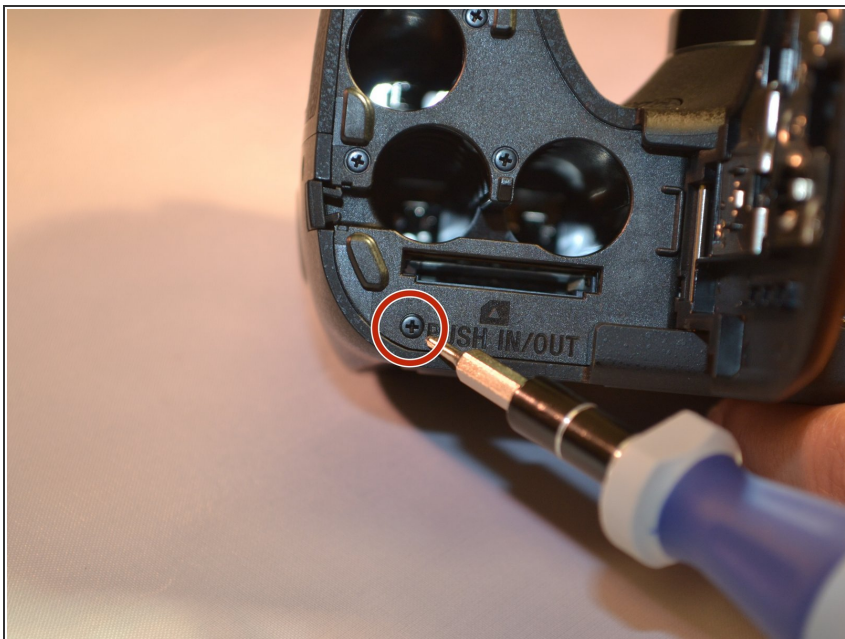
## Step 2



- Using a screwdriver, remove one 6mm screw on the front panel.
- Using a screwdriver, remove two 3mm screws on the front panel.



## Step 3



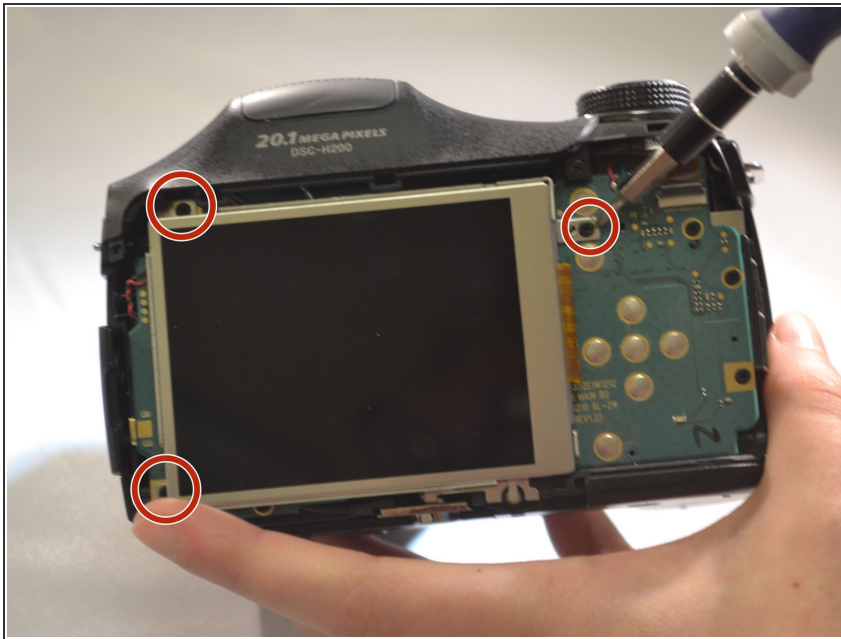
- Open the SD Door, unscrew and remove the single 6mm screw closest to "PUSH IN/OUT" under the SD card slot.

## Step 4



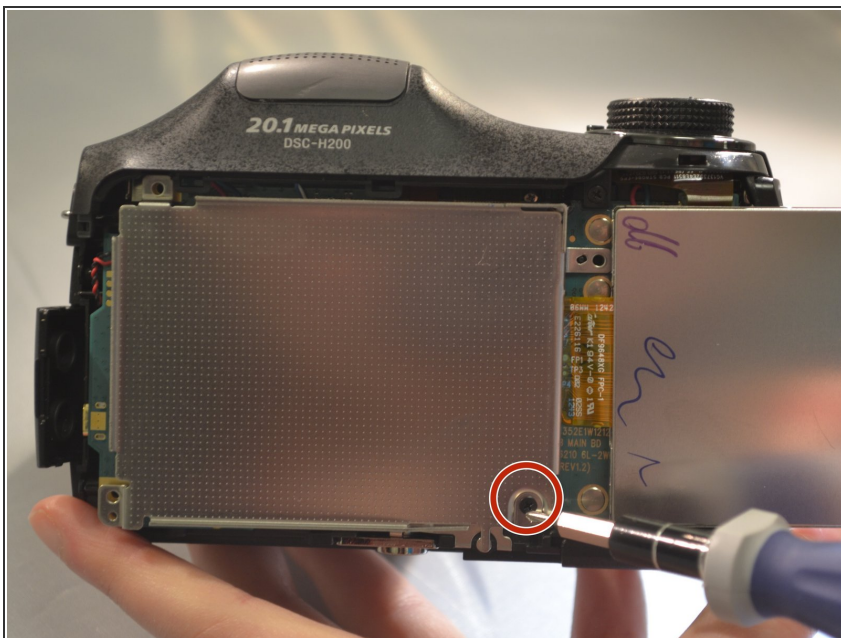
- Remove the back panel (the LCD and motherboard are exposed).

## Step 5



- Using a screwdriver, remove the three 4mm screws that attach the LCD to the camera motherboard. (The LCD is contained in a holding plate, attached to the motherboard with a ribbon cable.)

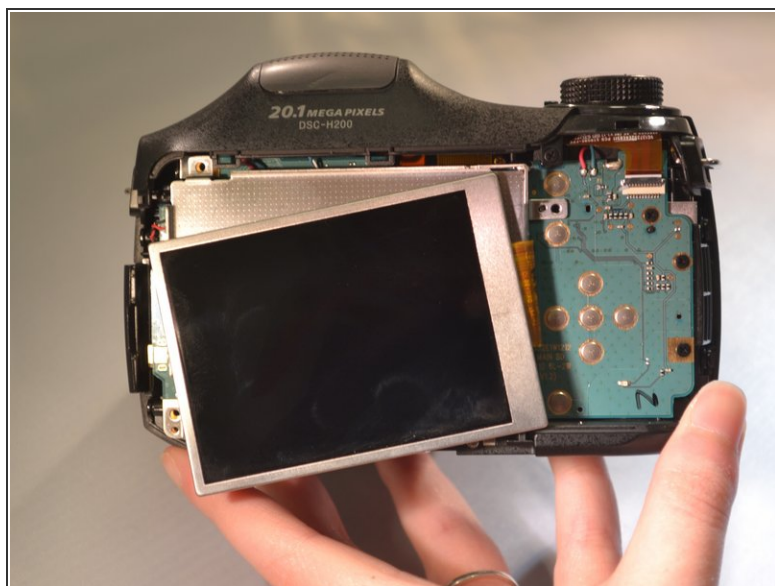
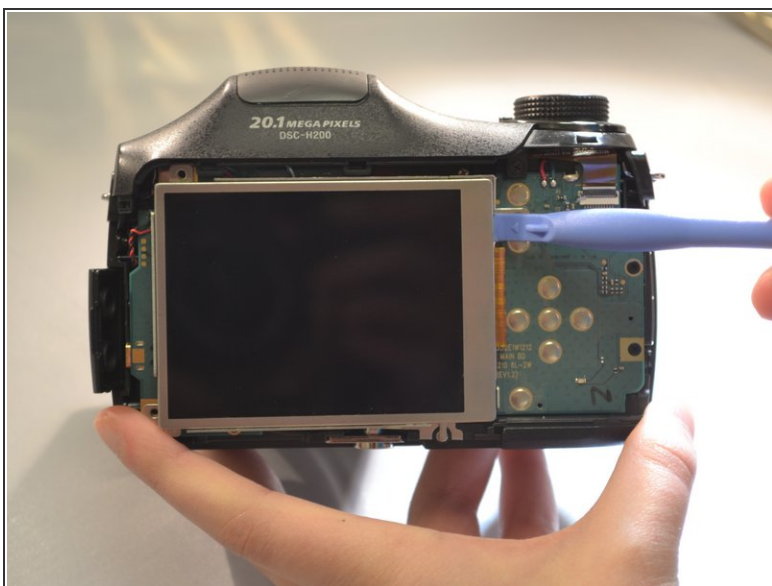
## Step 6



- Using a screwdriver, remove the single 4mm screw at the bottom of the holding plate.



## Step 7



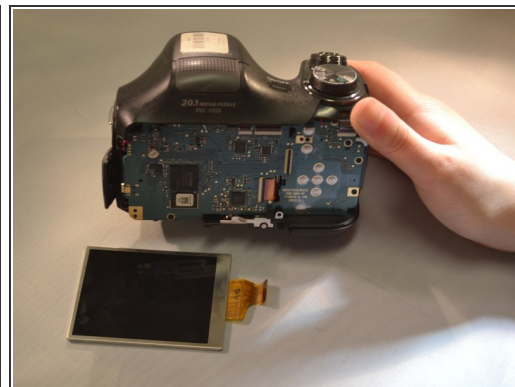
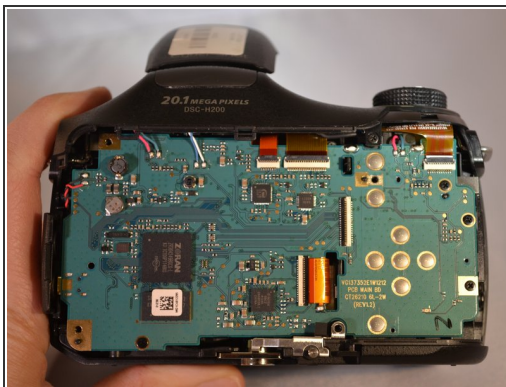
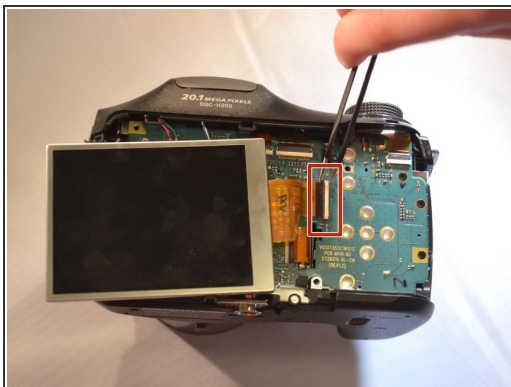
- Lift the holding plate away from the motherboard and set aside.

## Step 8



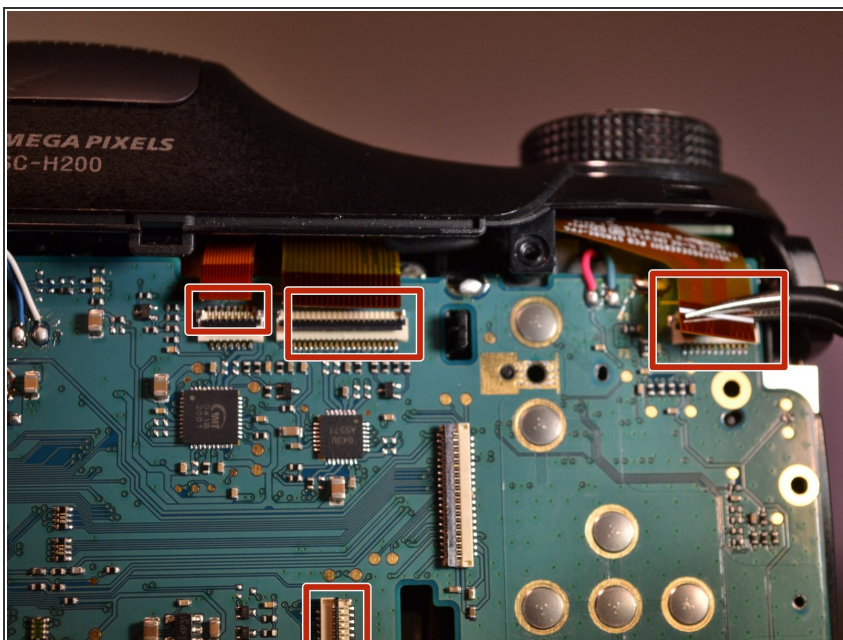
- Using tweezers, open the LCD ribbon port by lifting the black hinge. (The LCD ribbon cable will detach.)

## Step 9



- Using tweezers, remove the LCD with the ribbon cable and set aside.

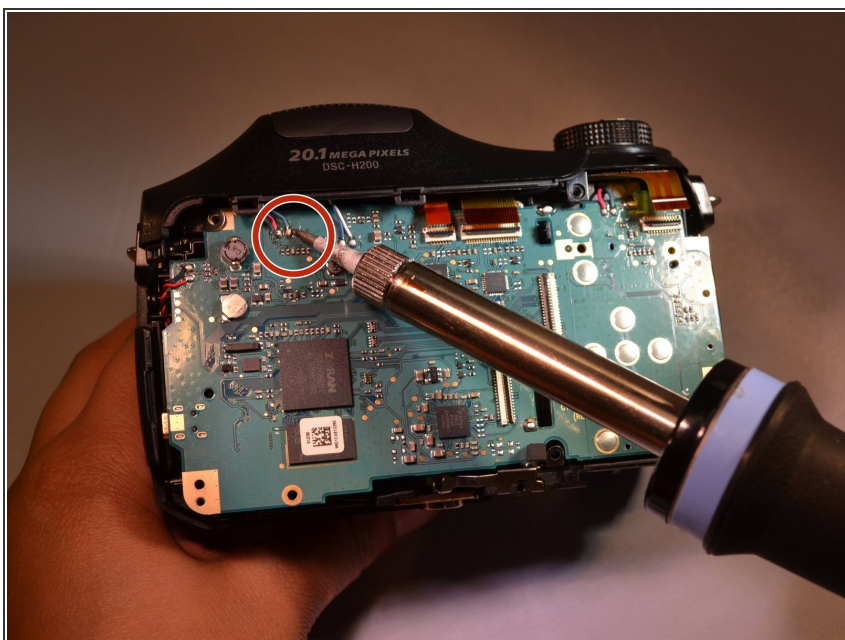
## Step 10 — Motherboard



- Using tweezers, remove the four amber-colored ribbon cables from the motherboard.



## Step 11



- Using a soldering iron, disconnect all wires from the motherboard.
- ⚠ Users unfamiliar with a soldering iron should be extremely careful as the device can get very hot.

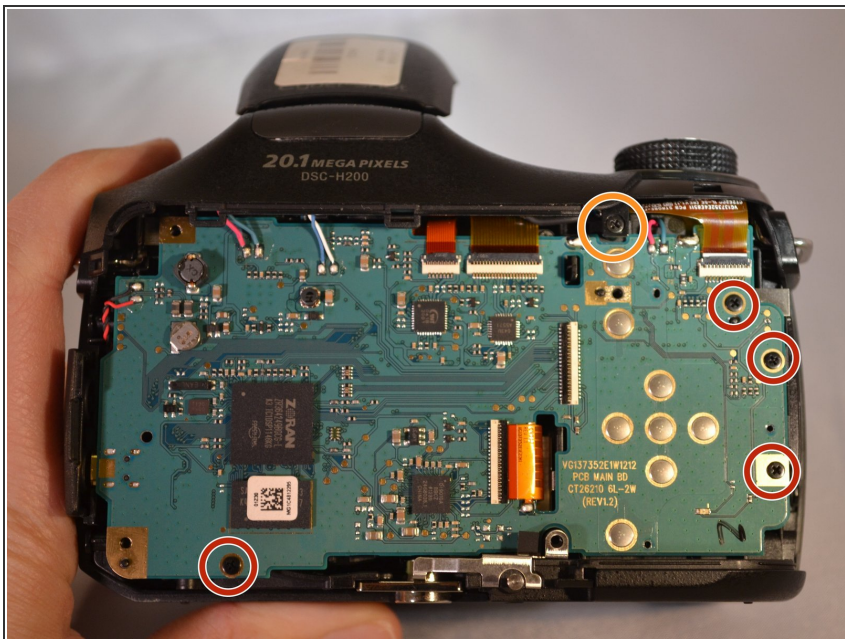
## Step 12



- Lift motherboard away from camera body.



## Step 13 — Tripod Port



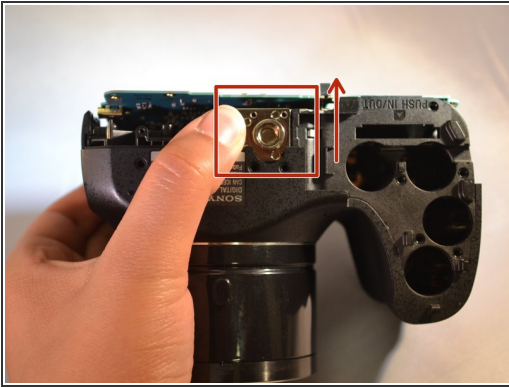
- Using a screwdriver, remove the four 4mm screws from the motherboard.
- Then remove the single 4mm screw connecting the motherboard to the main body of the camera.

## Step 14



- Lift the motherboard away from the camera body (the tripod port is exposed)

## Step 15



- Using tweezers, lift the tripod port up and away from the camera body

To reassemble your device, follow these instructions in reverse order.