



Sony Cyber-shot DSC-H300 Rear Case Replacement

This guide will show how to replace the rear case of the Sony Cyber-shot DSC-H300. The rear case is the outside part of the camera holding it all intact.

Written By: Christian Morales



INTRODUCTION

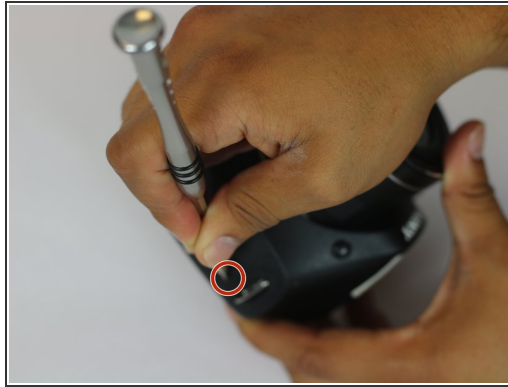
This guide shows a step by step process on how to replace the rear case of the camera. You must be careful during this guide due to certain parts being very vulnerable to breaking. If the case isn't staying in position or the buttons are unresponsive take a look at our troubleshooting guide for more help.



TOOLS:

- [Phillips #000 Screwdriver](#) (1)
 - [Spudger](#) (1)
-

Step 1 — Rear Case



- Remove the 6mm Phillips #000 screws.

Step 2



- Remove the five 6mm Phillips #000 screws.
- Remove the four 3mm Phillips #000 screws.

Step 3



- Use the flat end of a plastic spudger to pry apart the rear cover from the body of the camera.

To reassemble your device, follow these instructions in reverse order.