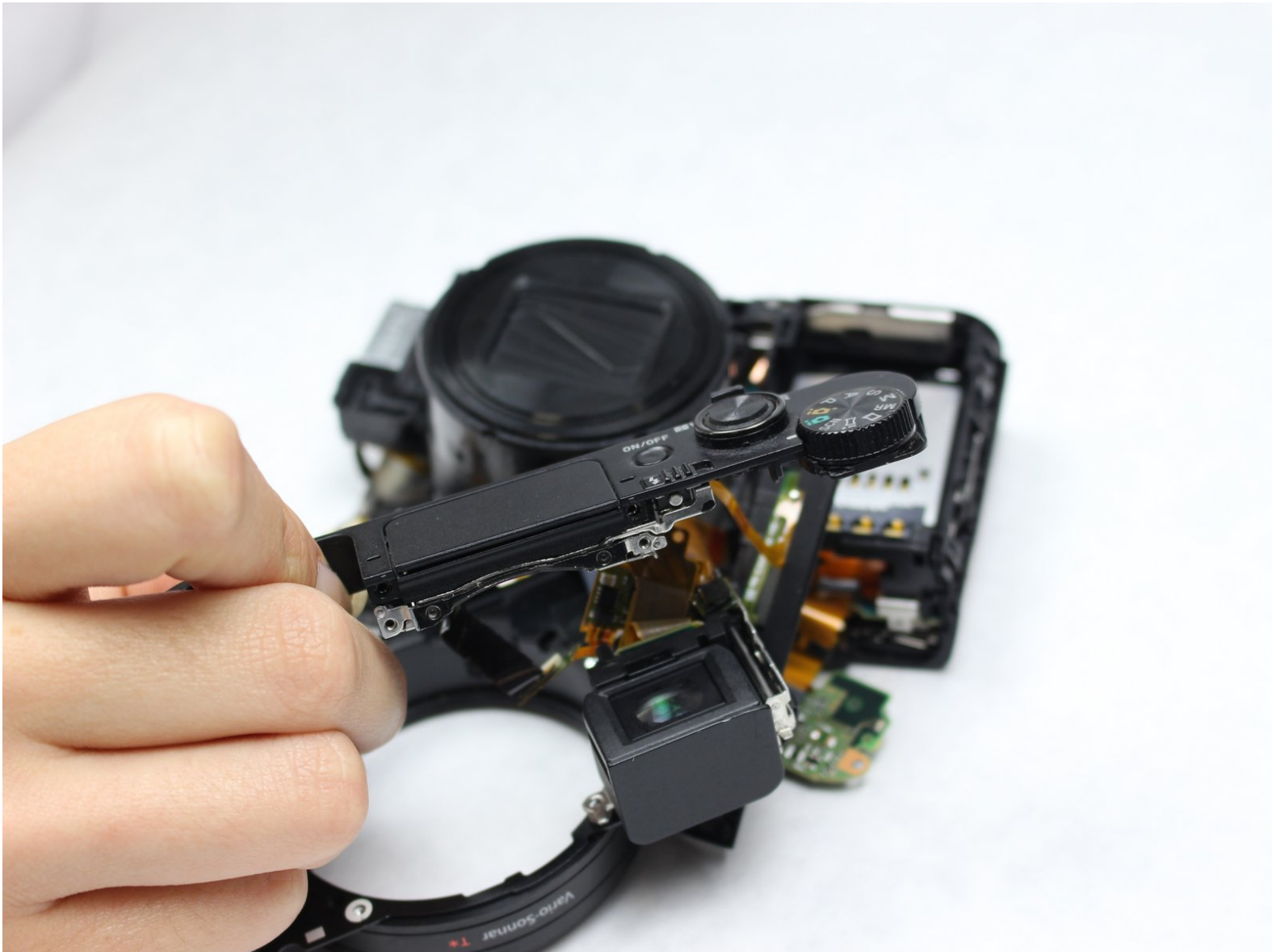




Sony Cyber-shot DSC-HX80 Shutter Button Replacement

How to replace a Sony Cyber-shot DSC-HX80 shutter button.

Written By: Gordon Jones



INTRODUCTION

Though a malfunctioning shutter button is not common, it is believed that this guide would provide a means of extending the useful life of some Sony DSC-HX80 cameras, by providing a guide to allow for a replacement of the part rather than the entire camera.

TOOLS:

- [iFixit Plastic Opening Tool](#) (1)
 - [Phillips #000 Screwdriver](#) (1)
-

Step 1 — Shutter Button



- Before disassembling any part of the camera, turn off the power by pressing down on the ON/OFF button. The ON/OFF button is located on top of the camera.

Step 2



- Open the compartment located at the bottom of the camera. Slide the LOCK/OPEN switch to the OPEN side. Locate the small blue tab on the side. Pull it in the direction away from battery. Remove the battery and set it aside.

Step 3



- Use the PH000 head screwdriver to take screws out. Begin unscrewing from the bottom of camera.
- At the end of this step there will be a total of five black 0.4 mm Phillips screws. Place them on a magnetic mat or a plastic bag.

Step 4



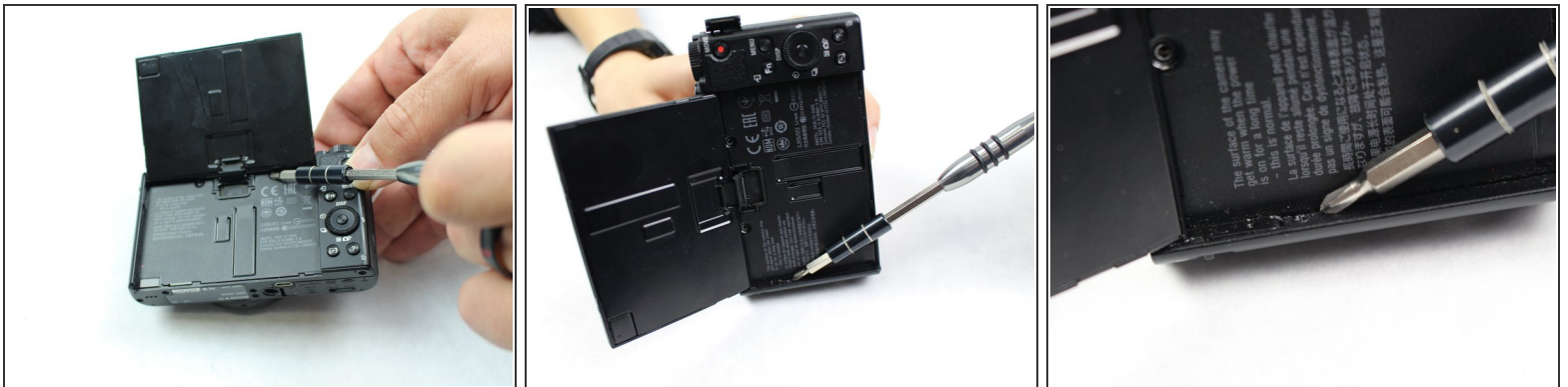
- Leave the screws holding the LCD screen in place!

Step 5



- Keep working alongside each side of the camera until all screws are addressed.
- In addition to the five screws from the bottom, a total of three more 0.4 mm black Phillips screws are located as indicated in the photo. Place them on the magnetic mat or plastic bag.

Step 6



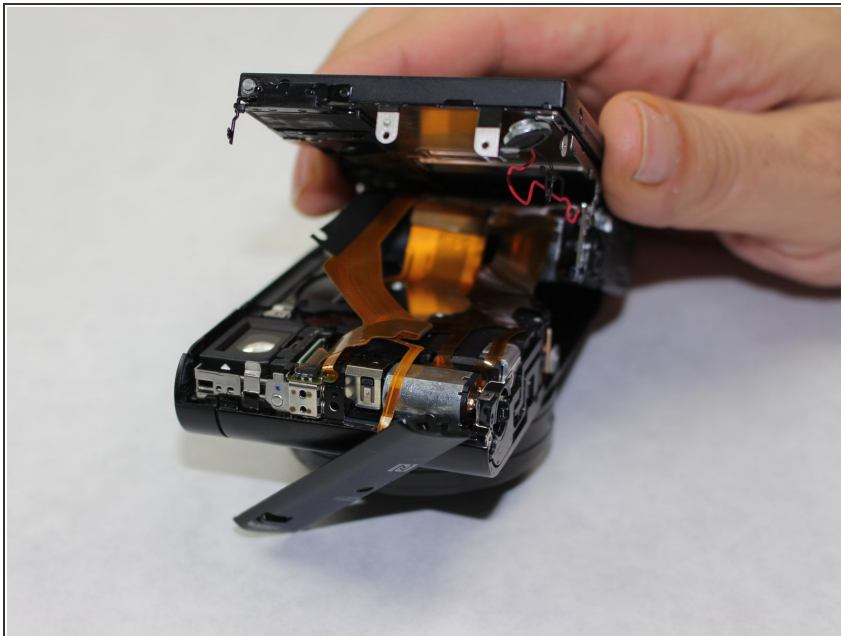
- Flip the LCD screen upwards. Use the PH000 Phillips head screwdriver to remove screws located under the LCD screen.
- For this step there will be an additional three 0.3 mm black Phillips screws. Place them on magnetic mat or plastic bag.

Step 7



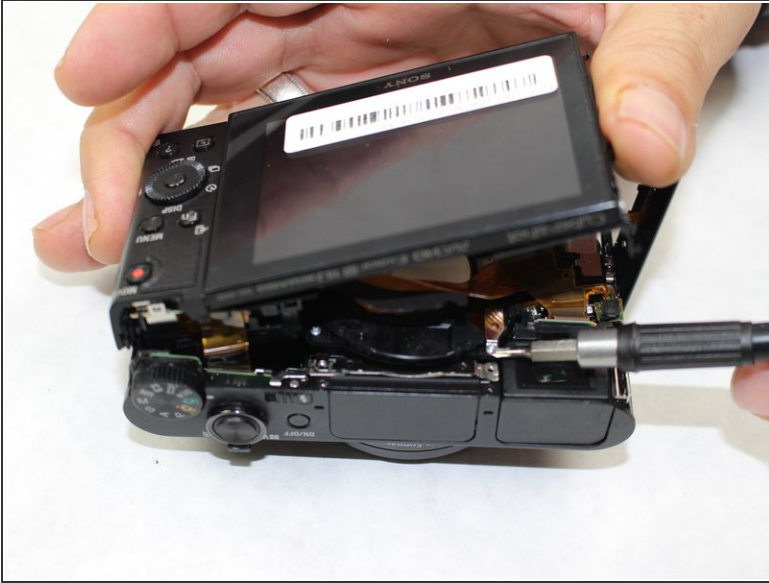
- **Use the plastic opening tools included in the iFixit tool kit first** . If the shell/parts do not detach from each other, use metal spudgers as a last resort to loosen/separate the plastic shell of the camera. Keep in mind that there may be more screws holding parts together. Work delicately and separate sides evenly.

Step 8



- After loosening the plastic edges of the camera, gently pull the LCD screen upwards.

Step 9



- Locate the two 0.3 mm silver screws that hold the face of the screen in place. Use the PH000 Phillips head screwdriver to remove screws.
- Place the two 0.3 mm screws on magnetic mat or plastic bag.

Step 10



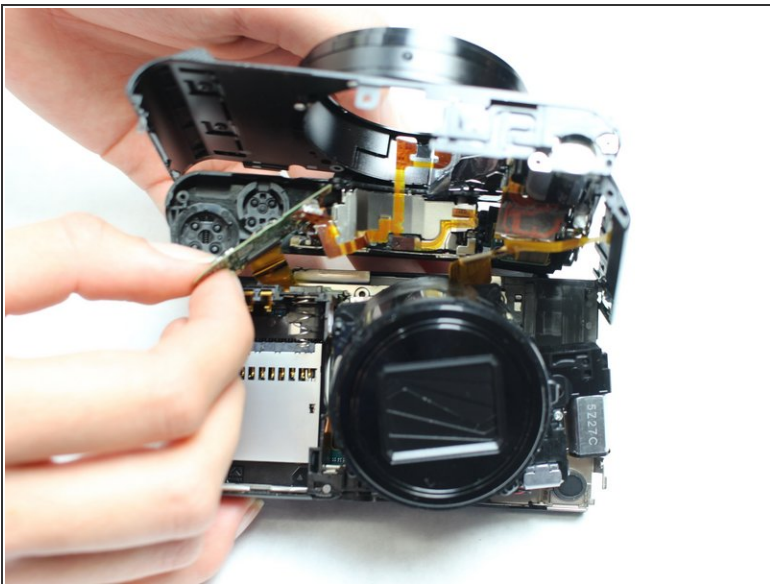
- Use metal spudger to detach the face of the screen off the rest of the camera. Be extremely careful as there is a thin golden film/plastic ribbon holding the face of the screen to the rest of the camera.

Step 11



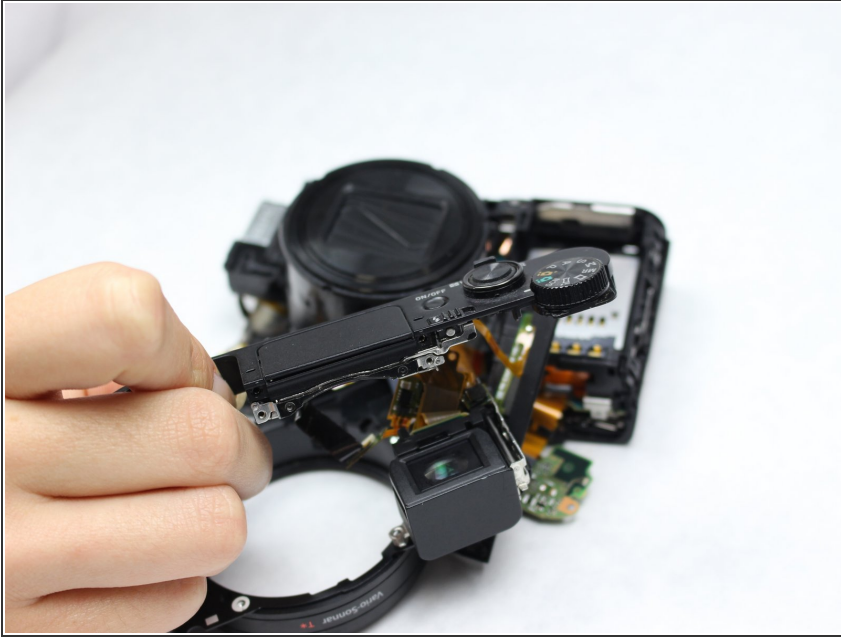
- After separating the face of the screen, look for the screws located on the circuit board. These screws are what allow the thin golden film/plastic ribbon to connect the top part to the rest of the camera. Remove the 0.4 mm circuit board screws by using the PH000 Phillips head screwdriver.
- Place the two screws on magnetic mat or plastic bag.

Step 12



- Gently pull the circuit board off the top piece. The top piece, which has the shutter button attached, will then be detached from the rest of the camera.

Step 13



- Replace the non-functioning top piece of the camera with a new one.

To reassemble your device, follow these instructions in reverse order.