



Sony Cyber-shot DSC-HX9V LCD Screen Replacement

This guide is for removing and replacing your LCD screen on your Sony Cyber-shot DSC-HX9V camera.

Written By: Kris



INTRODUCTION

This guide will help a user replace the LCD screen if it is broken. It is also a prerequisite guide for lens removal. Take note that there is a data cable installed and you must use caution when disconnecting it from the mainboard. The LCD lens is fragile and requires special handling.



TOOLS:

- [64 Bit Driver Kit](#) (1)
 - [Padded surface](#) (1)
 - [iFixit Opening Tools](#) (1)
 - [Rubber Band](#) (1)
-

Step 1 — Battery



- ❗ Ensure the camera is powered off prior to removal of the battery. The LCD screen will have no information displayed if the camera is properly turned off.
- Place the camera upside down with the top sitting on a flat surface.
- Using your fingers, slide the door lock to the unlock position.

Step 2



- Open the battery compartment door.
- Remove the battery from the compartment by turning the camera upside down and allow it to slide out. Be sure to catch the battery as it slides out.
- If you are replacing internal camera parts, stop here. If you are replacing the old battery, continue with step 2.
- ⓘ Sony recommends the use of an approved battery for maximum performance. The recommended battery model number is NP-FG1.
- Insert the new battery into the compartment matching the positive battery lead to the positive terminal and the negative battery lead to the negative terminal on the camera.
- Close and lock the battery door and power the camera up. Ensure to check the battery charge levels and that all functions of the camera work properly.

Step 3 — Rear Case



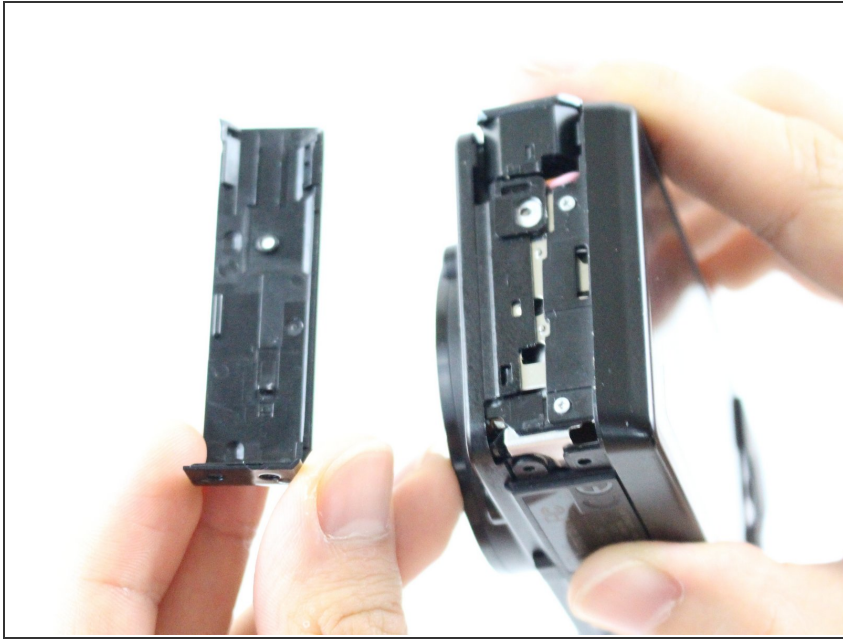
- i** The screws are very small and may become lost during removal. It is recommended to store the screws in a Ziplock bag or container until it is time to reassemble.
- Place the camera on a towel while working on top of a desk or table.
- Remove the five marked screws with a Phillips #000 screwdriver.

Step 4



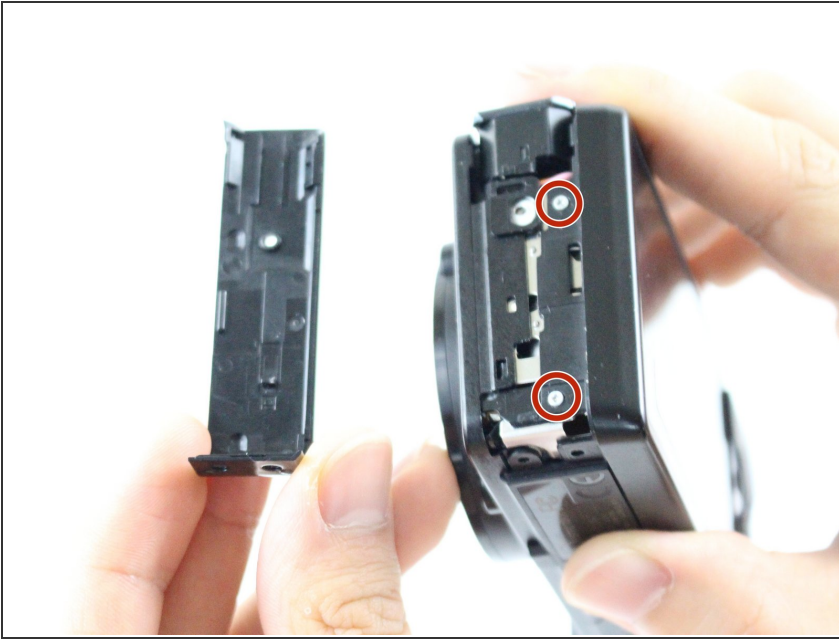
- In addition, remove the two marked screws with a Phillips #000 screwdriver.

Step 5



- Slide the side cover downward once all screws are removed and place it to the side.

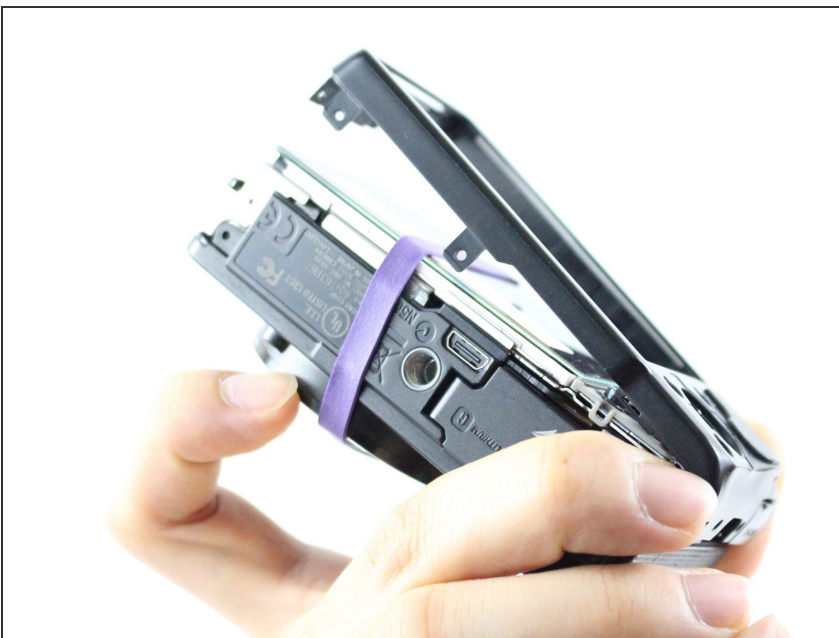
Step 6



! The marked screws will loosen the rear case and the LCD screen may shift. The use of a soft work surface will prevent the LCD screen from breaking if it accidentally shifts during the removal process.

- Remove the two marked screws with a Phillips #000 screwdriver.

Step 7

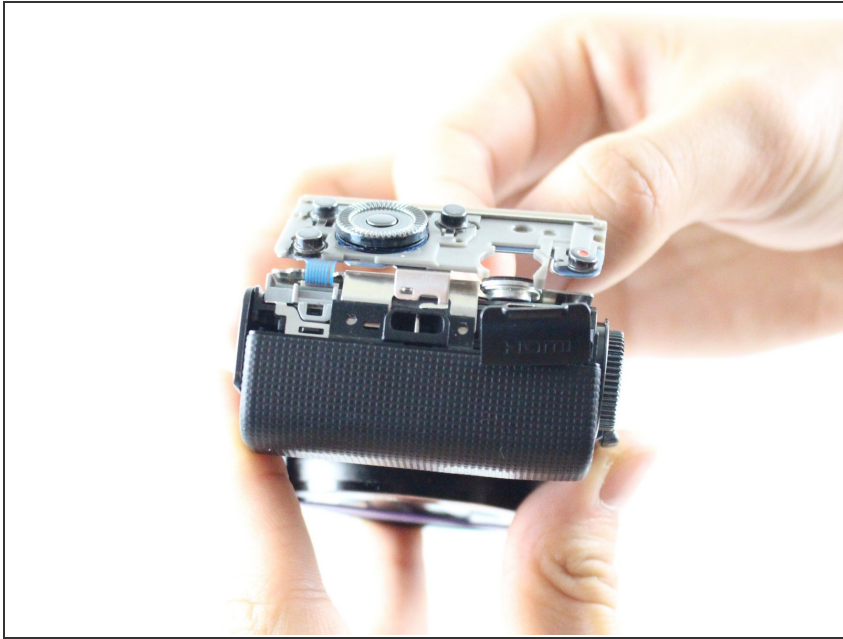


- Once all the screws are removed, partially lift the rear case upward and install a rubber band.

! The LCD screen will be loose. The use of a tight fitting rubber band will prevent the LCD screen from sliding. The rubber band will only be temporary.

- After installation of the rubber band, open the HDMI dust plug located on the right hand side of the camera and continue to tilt the rear case backwards until it is removed.

Step 8



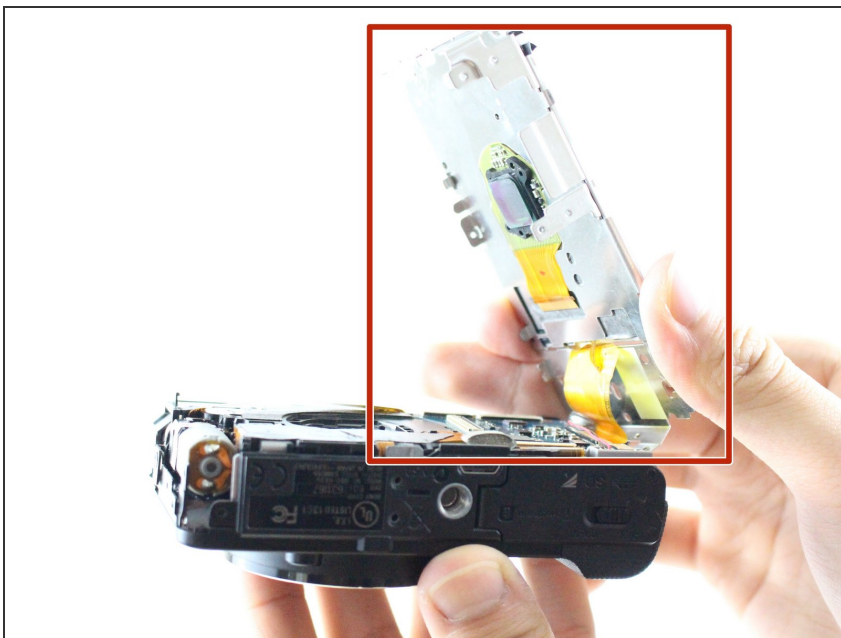
- ① The control board will be loose. Take note to the orientation of the board to aid with installation.
- Partially lift the control board up from the accessory cage.

Step 9



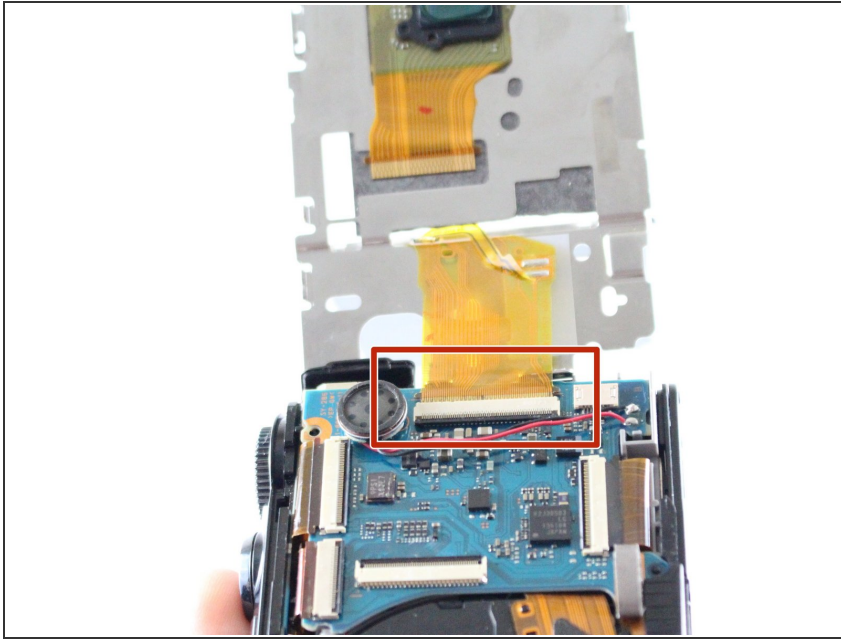
- ⚠ Disconnect the control board data cable with care. Permanent damage may occur to the control board if tools are used to disconnect the data cable. Use your fingers only.
- Disconnect the control board data cable by wiggling carefully with your fingertips. Set the control board to the side once it is disconnected.

Step 10 — LCD Screen



- ⚠ LCD screen is very fragile. Handle with care. Do not use tools to remove the screen.
- The LCD screen rests against a metal plate. Lift the metal plate and LCD screen simultaneously until it is perpendicular to the camera.

Step 11



- ⚠ Use caution when handling the data cable. Excessive force will permanently damage the cable.
- Using one hand, carefully rock the data cable in a side to side motion to disconnect it from the mainboard. Ensure your other hand is holding the screen to prevent damage.
- Store the LCD screen on a padded surface with the screen facing downward. This will prevent any damage to the screen if tools or items were accidentally dropped on it.

To reassemble your device, follow these instructions in reverse order.