



# Sony Cyber-shot DSC-P100 Battery Replacement

This is a step-by-step guide to removing the battery in the Sony Cyber-shot camera.

Written By: Katie McCraw

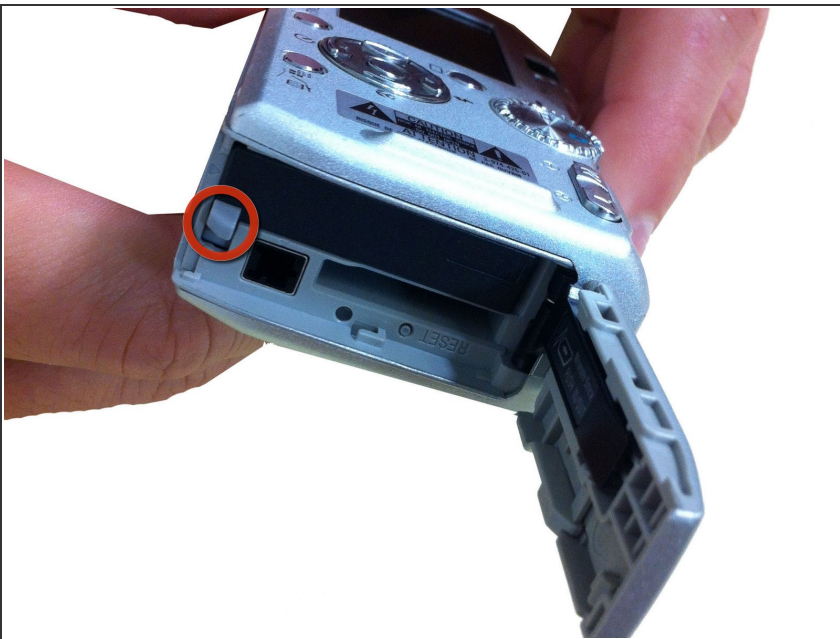


## Step 1 — Battery



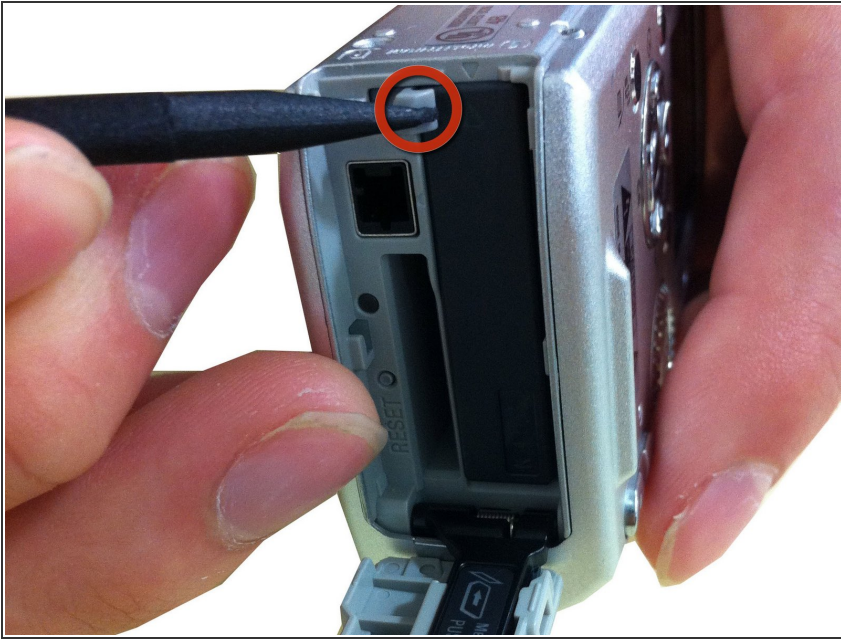
- Pull the battery cover in the direction of the arrow.

## Step 2



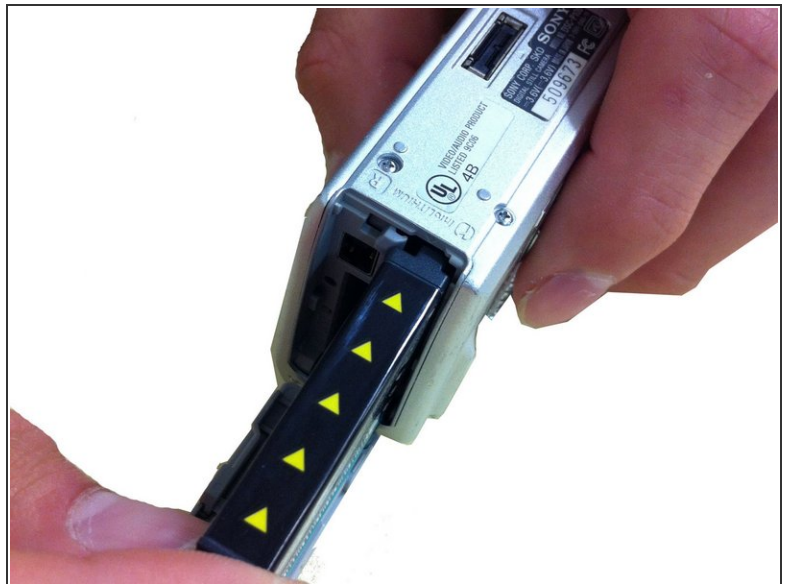
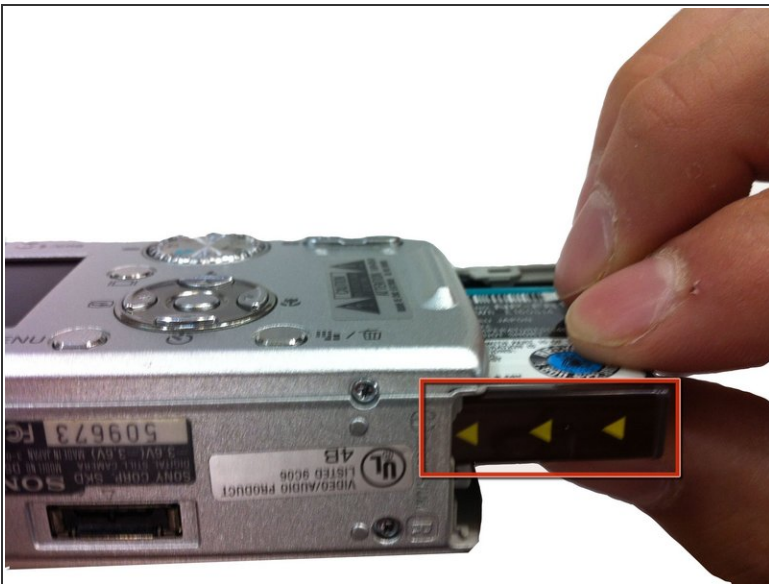
- Allow the latch to be released.

### Step 3



- Push the battery latch away from the battery until the battery is released. Then remove battery.

### Step 4



- Insert battery with the arrows directing into the camera.
- ⓘ It is important to put the battery in the camera in the correct direction in order for the camera to function properly.

To reassemble your device, follow these instructions in reverse order with replacement battery.