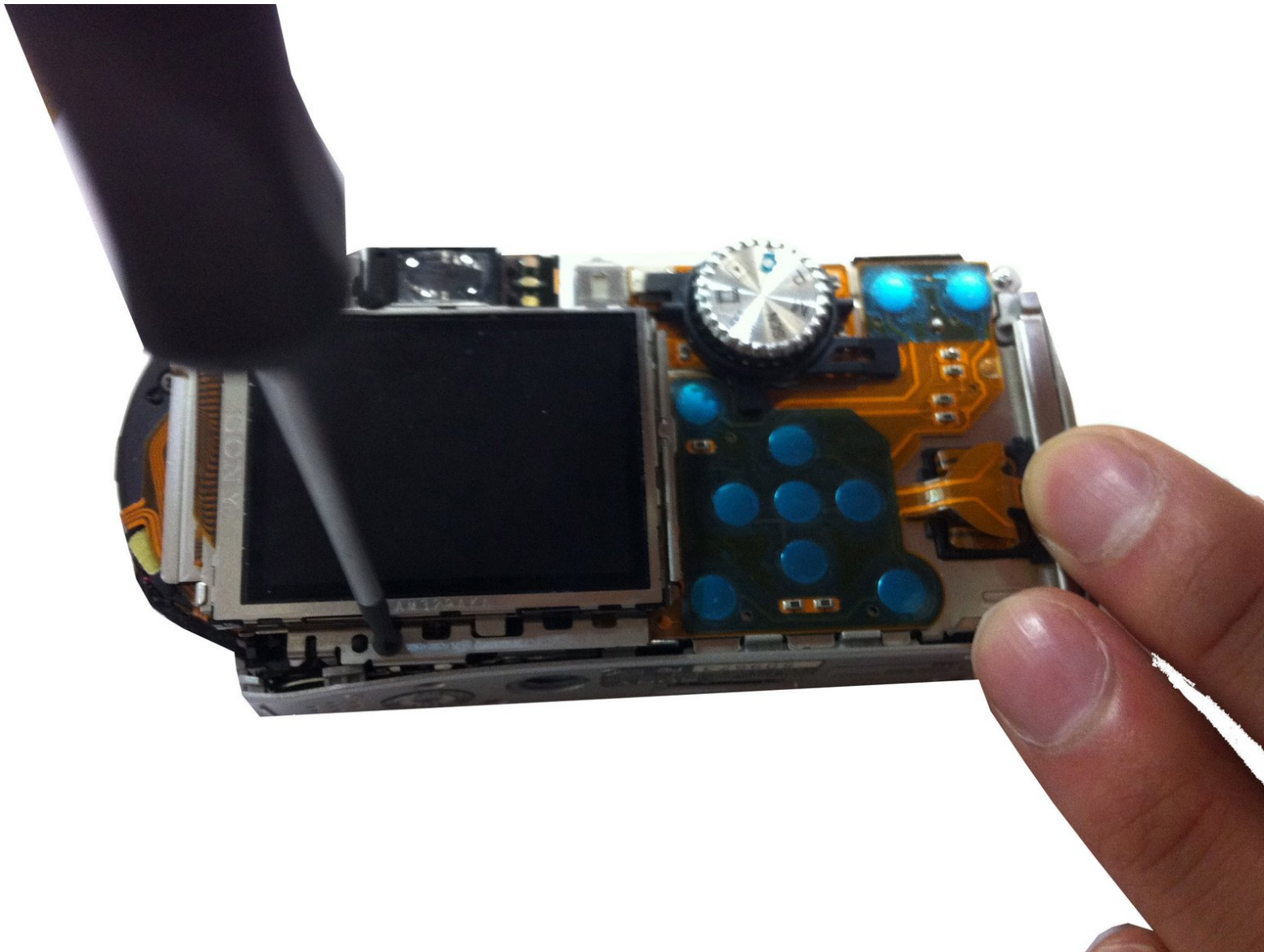




# Sony Cyber-shot DSC-P100 Camera Lens Replacement

This is a step-by-step guide to disassembling the camera lens.

Written By: Katie McCraw





## TOOLS:

- [Heavy-Duty Spudger](#) (1)
- [Tweezers](#) (1)
- [Phillips #00 Screwdriver](#) (1)

## Step 1 — Front Casing



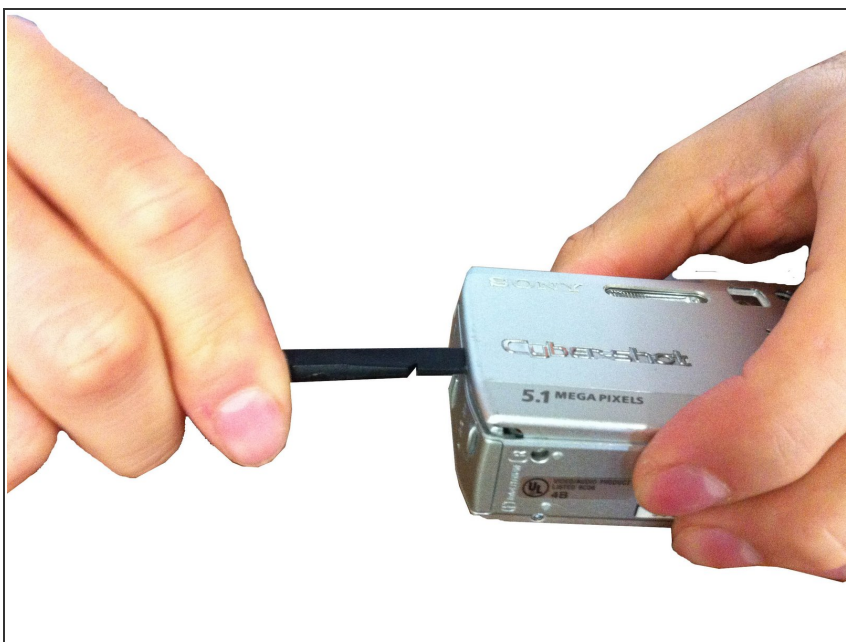
- First locate the appropriate screws for detachment.

## Step 2



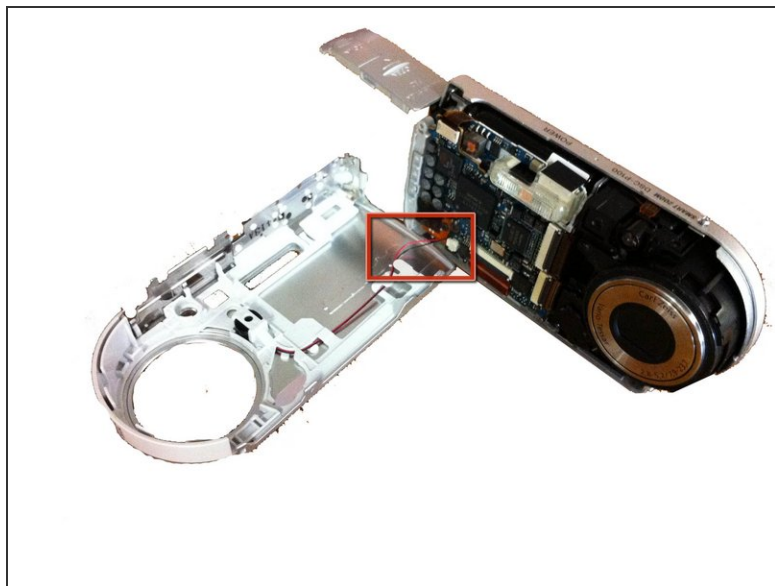
- Remove the five screws shown using a Phillips #00 Screwdriver.
- ⓘ It is important to put the small screws in a safe location in order to reassemble the casing.

### Step 3




- Using a spudger, carefully pry open the front casing.

### Step 4



- Carefully separate the front casing from the camera body.

 **CAUTION:** Be careful not to break the wire connecting the front casing and the camera.



## Step 5 — Back Casing



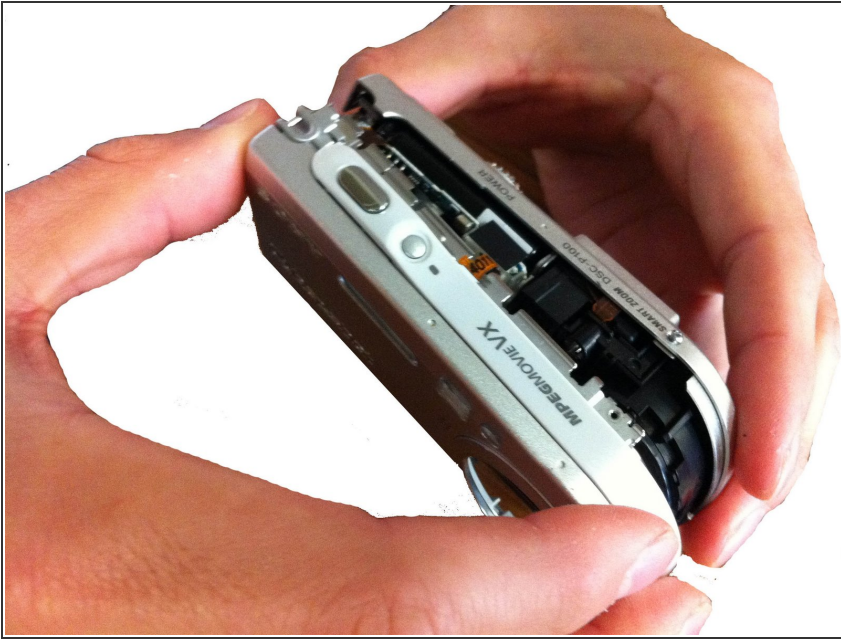
- It is necessary to first locate the appropriate screws in order to disassemble the back casing.

## Step 6



- Remove the found screws with a small screwdriver.
- ⓘ It is important to put the small screws in a safe location in order to reassemble the casing.

## Step 7



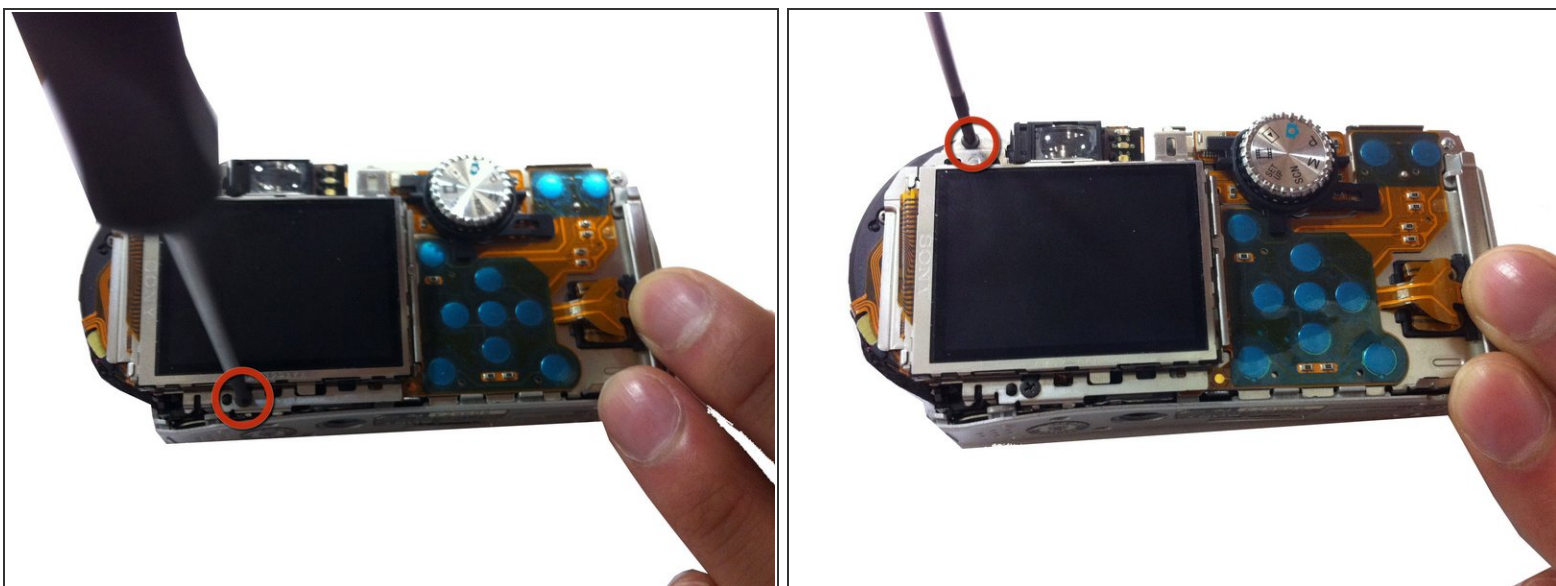
- Carefully pull the back casing away from the camera.

## Step 8



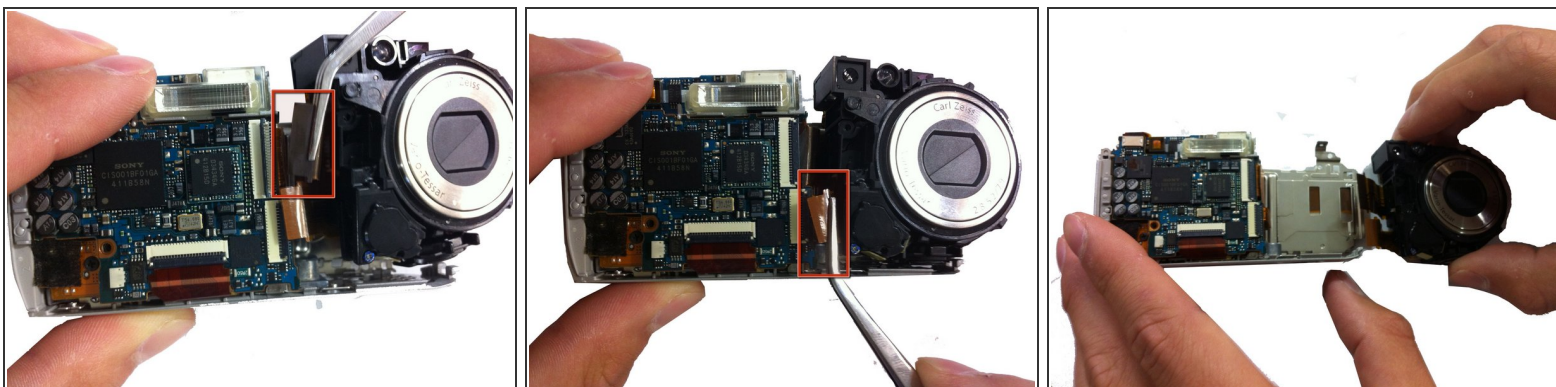
- The back casing is now removed from the camera.

## Step 9 — Camera Lens



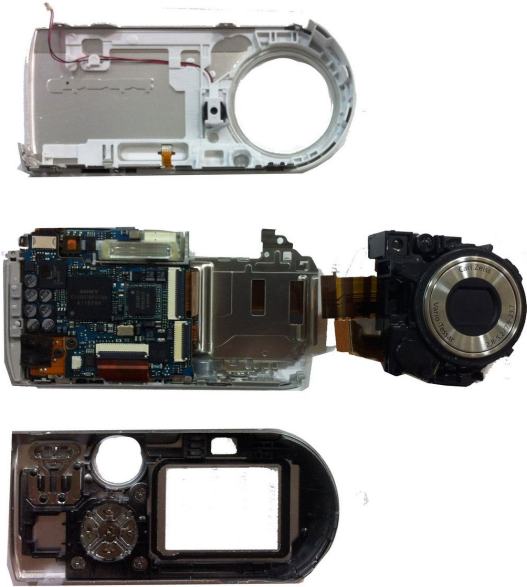
- Remove the two screws on the back side of the camera surrounding the LCD screen.

## Step 10



- Remove the two ribbon traces found on the left side of the lens on the front of camera holding the lens in place.
- Carefully pull the lens away front the camera until it is released.

## Step 11



- The lens is now successfully removed from the camera.

To reassemble your device, follow these instructions in reverse order.