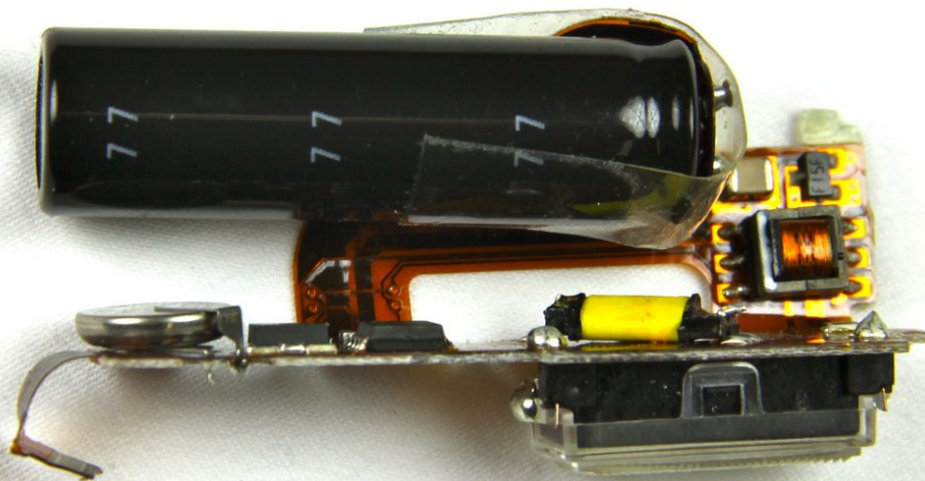




# Sony Cyber-shot DSC-P9 Flash Replacement

This guide shows how to install a new flash component.

Written By: Andrew Forster





## TOOLS:

- [Phillips #000 Screwdriver](#) (1)
  - [Spudger](#) (1)
-

## Step 1 — Battery



- Slide the battery latch down the side of the camera with your hands.
- The latch will automatically pop open.

## Step 2



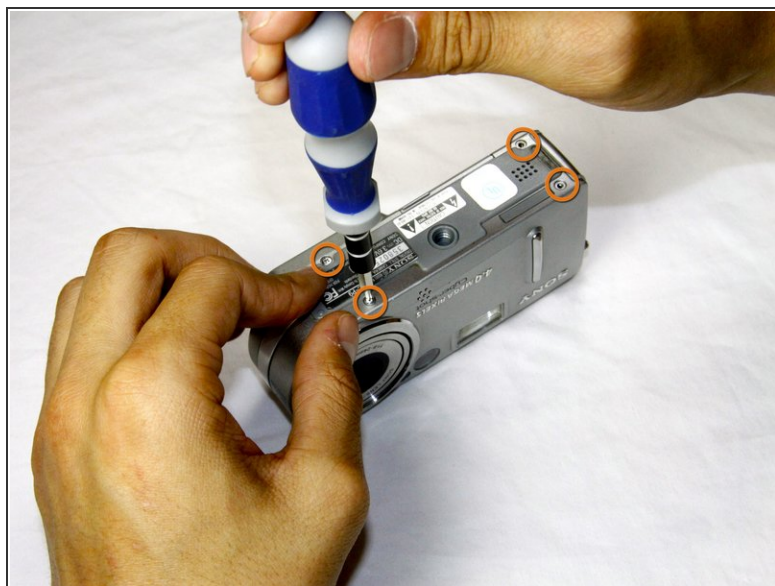
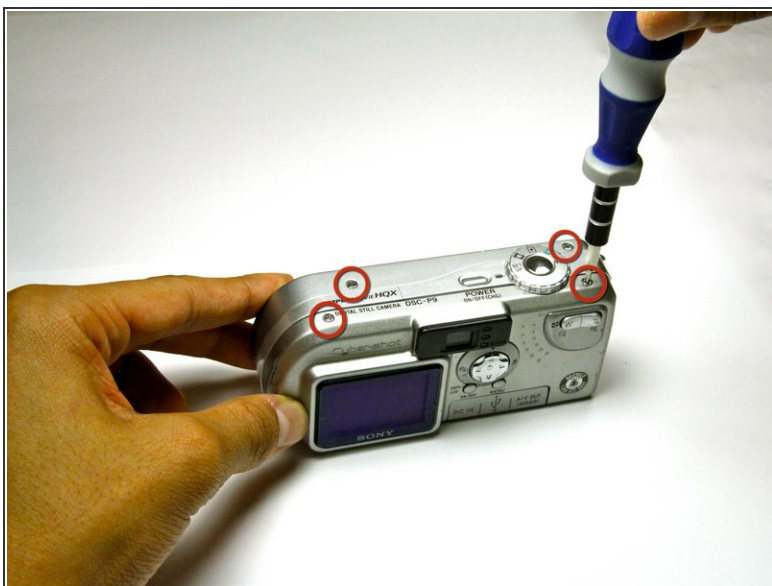
- Unlatch the clip over the battery.
- The battery will partially pop out.

### Step 3



- Remove the battery from the camera.

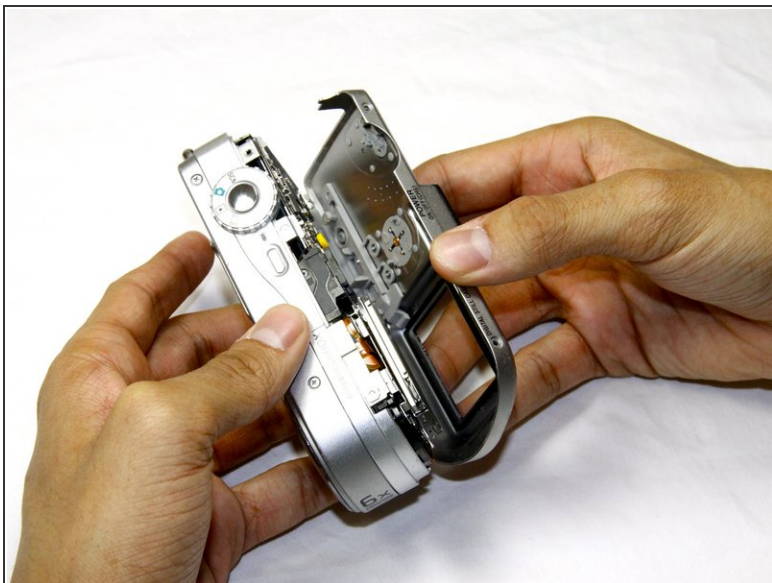
### Step 4 — Outer Casing



- Remove the four 3.0mm Phillips #000 screws on the top of the camera with the phillips screwdriver.
- Remove the additional four 3.0mm Phillips #000 screws on the bottom of the camera.

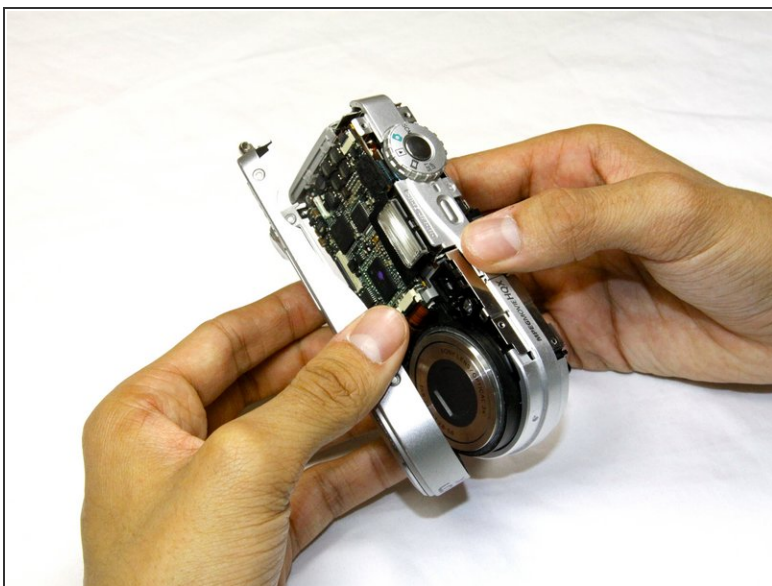


## Step 5



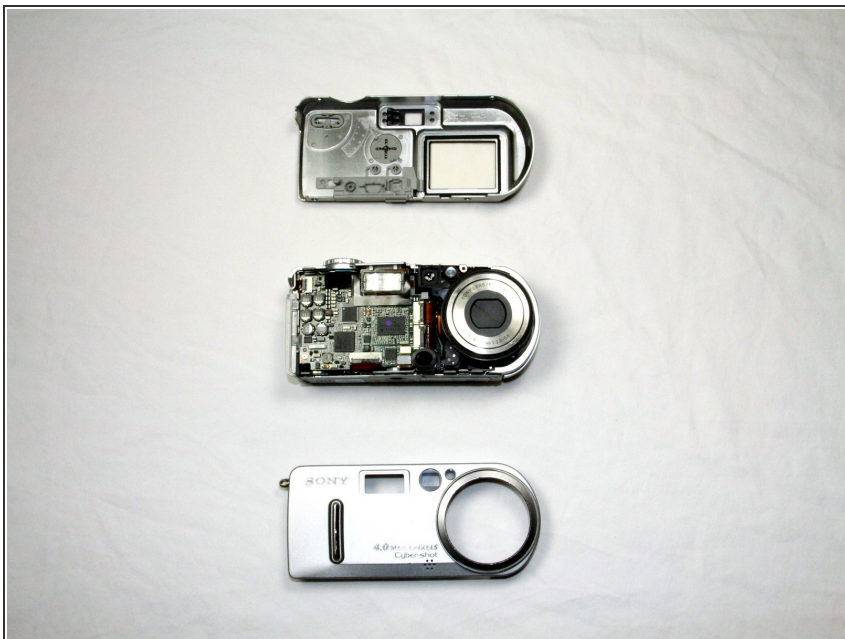
- Once the screws are removed, slowly remove the back casing from the rest of the camera.

## Step 6



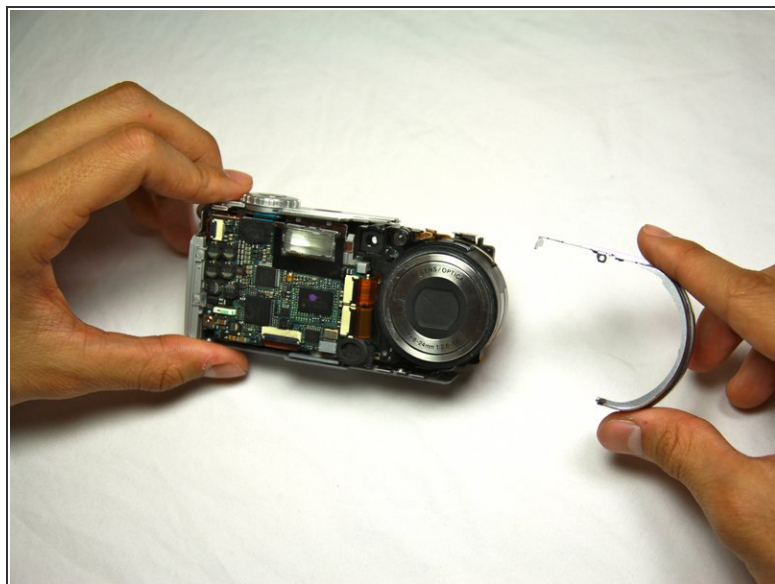
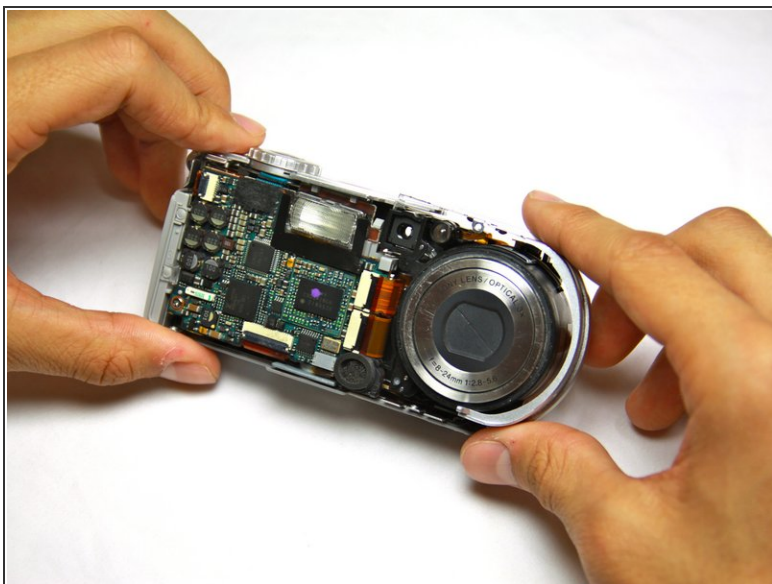
- Then, pull the front case away from the rest of the camera.

## Step 7



- After the casing is removed, the camera should look as shown.

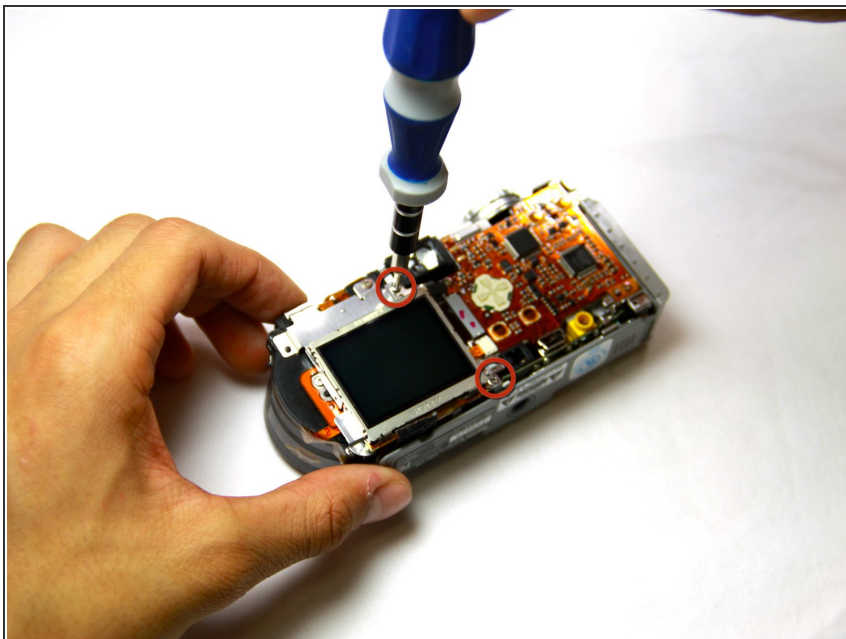
## Step 8 — Lens



- Dislodge the round casing from the lens.
- Pull it away from the rest of the camera.

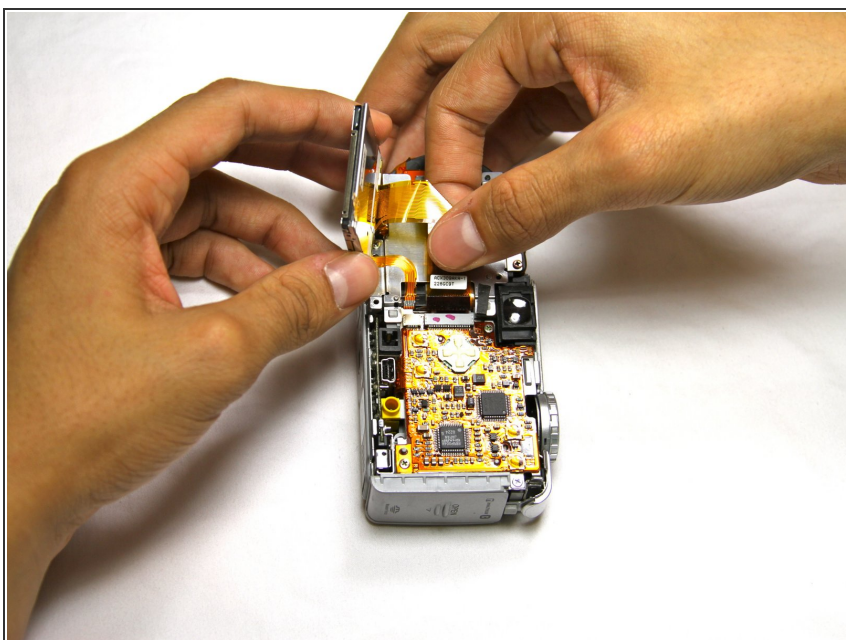


## Step 9



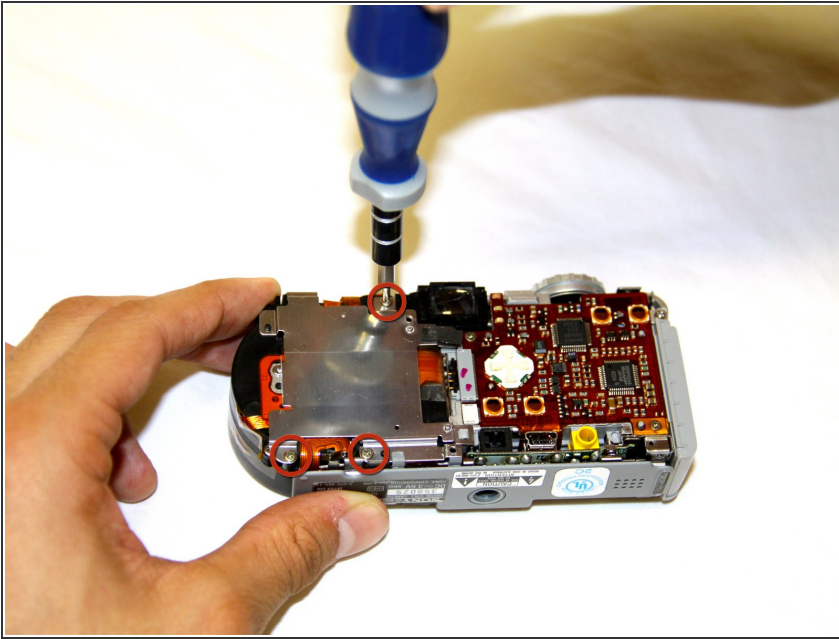
- Unscrew the two 4.0mm Phillips #000 screws from the display.

## Step 10



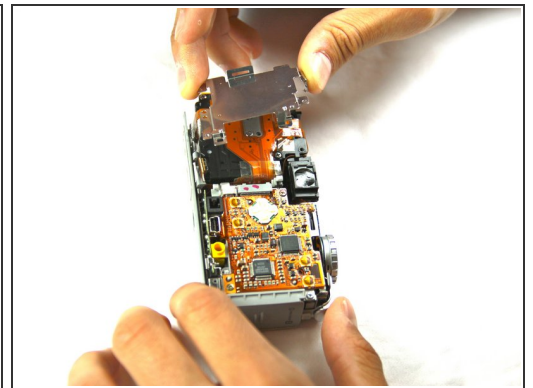
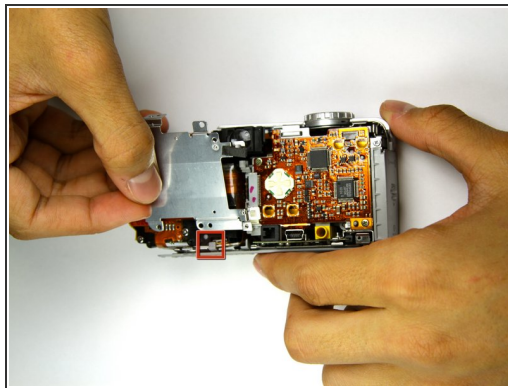
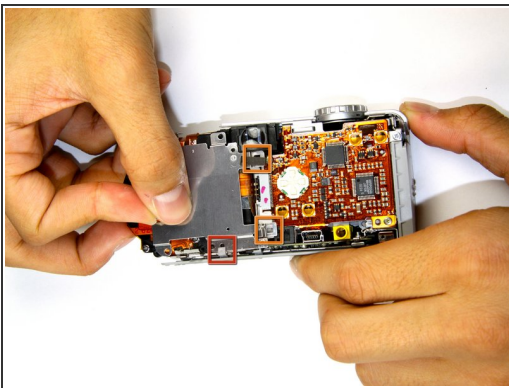
- Pull the two ribbon cables out of their slots on the back circuit board.

## Step 11



- Remove the three 4.0mm Phillips #000 screws holding the back panel in place.

## Step 12

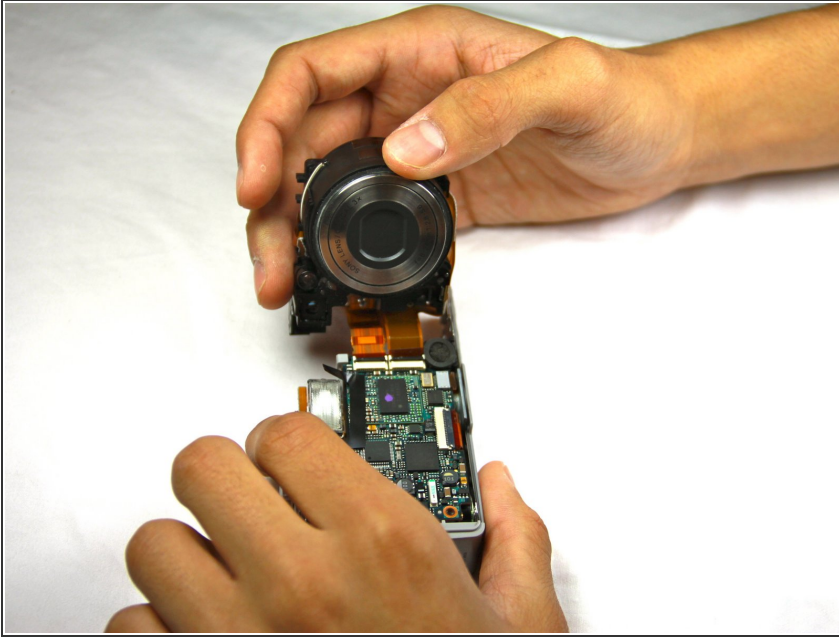


- Work the back panel out from under the small grey clip.
- Slide the back panel off of the camera by dislodging it from the remaining clips.
- Below is a flat, orange cable connecting the lens to the motherboard.

⚠ Be careful not to bend the back plate during this process.

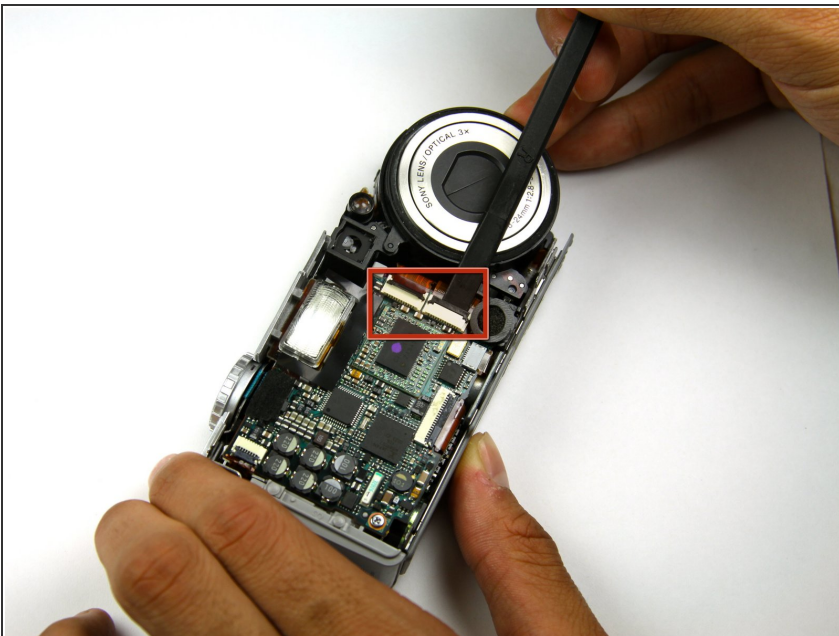


## Step 13



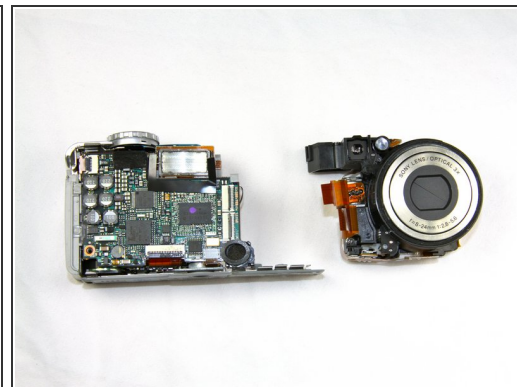
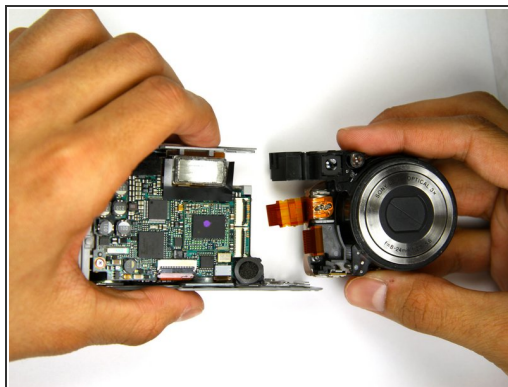
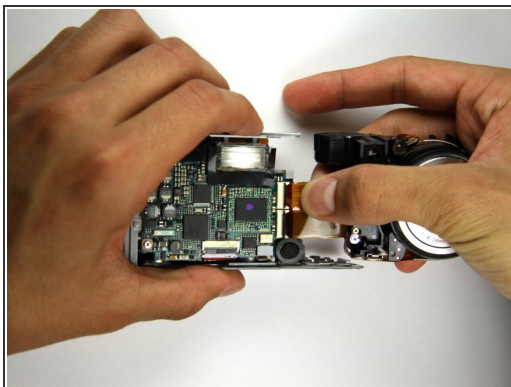
- Turn the camera over so that you can see the front of the lens.
- Two connectors link the lens to the motherboard.
- Gently bring the lens away from the camera.

## Step 14



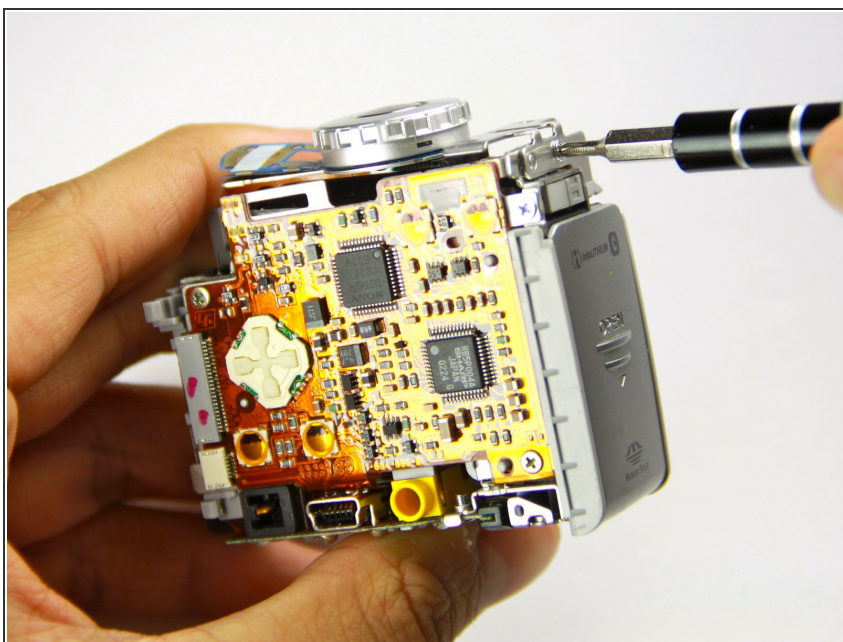
- Using the flat end of the plastic spudger tool, flip up the black tabs on the connectors.
- ⚠ Be careful not to exert too much force, as the connectors are delicate.

## Step 15



- Gently pull out the cables and move the lens away from the rest of the camera.
- You should now have two distinct, separate components.

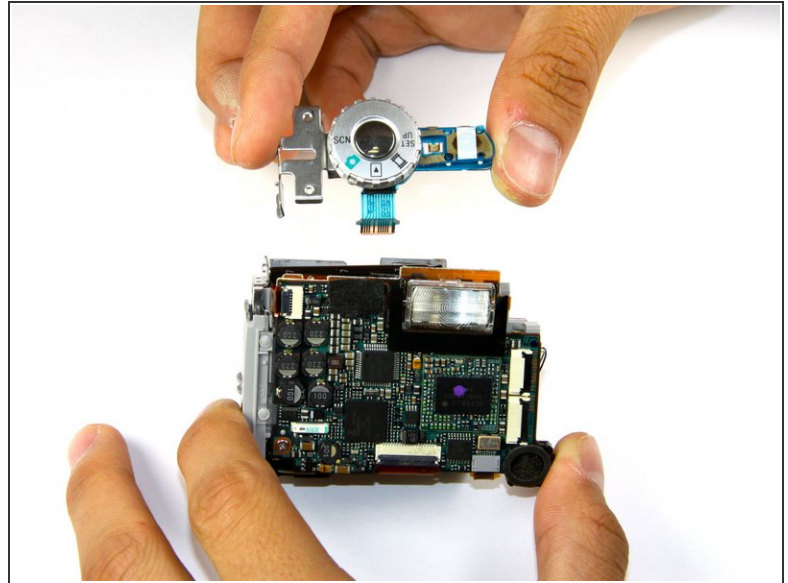
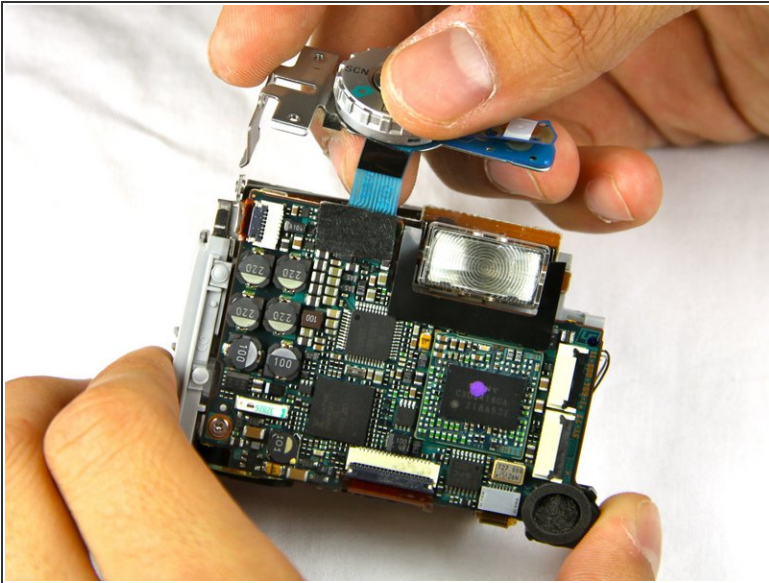
## Step 16 — Flash



- Remove the 3.0mm Phillips #000 screw at the top of the battery door.

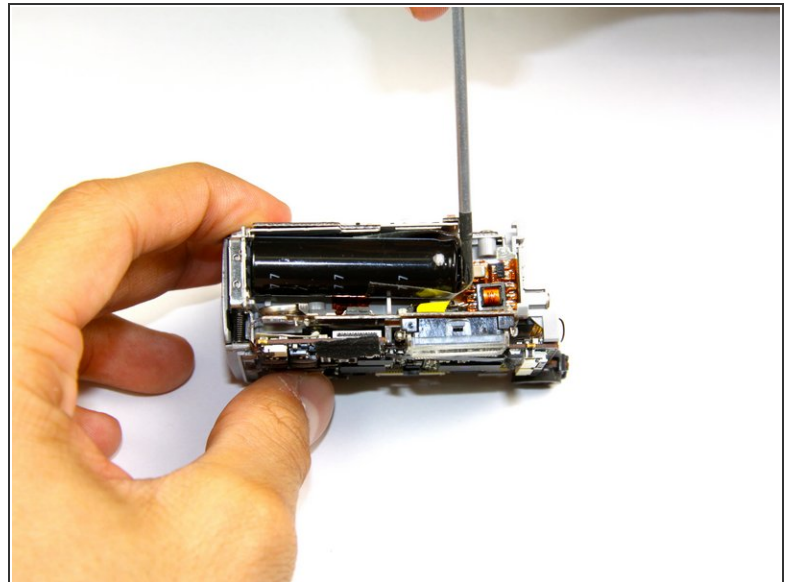
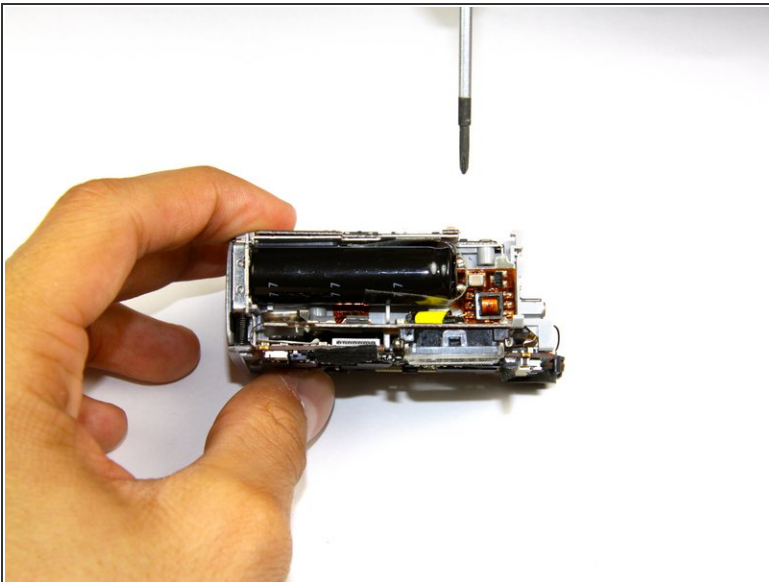


## Step 17



- Pull off the top button piece. You will have to detach a small blue ribbon cable.

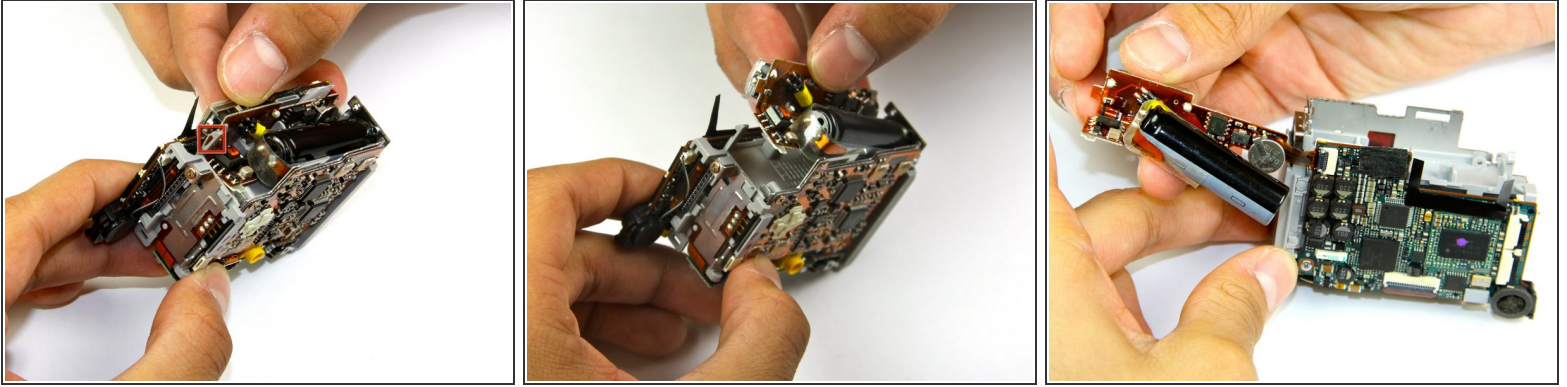
## Step 18



- ⚠ Caution:** the capacitor, a black cylinder near the top of the camera, might have a charge in it, which could be harmful to you or the camera. Neutralize it by touching both wires with a screwdriver at the same time.

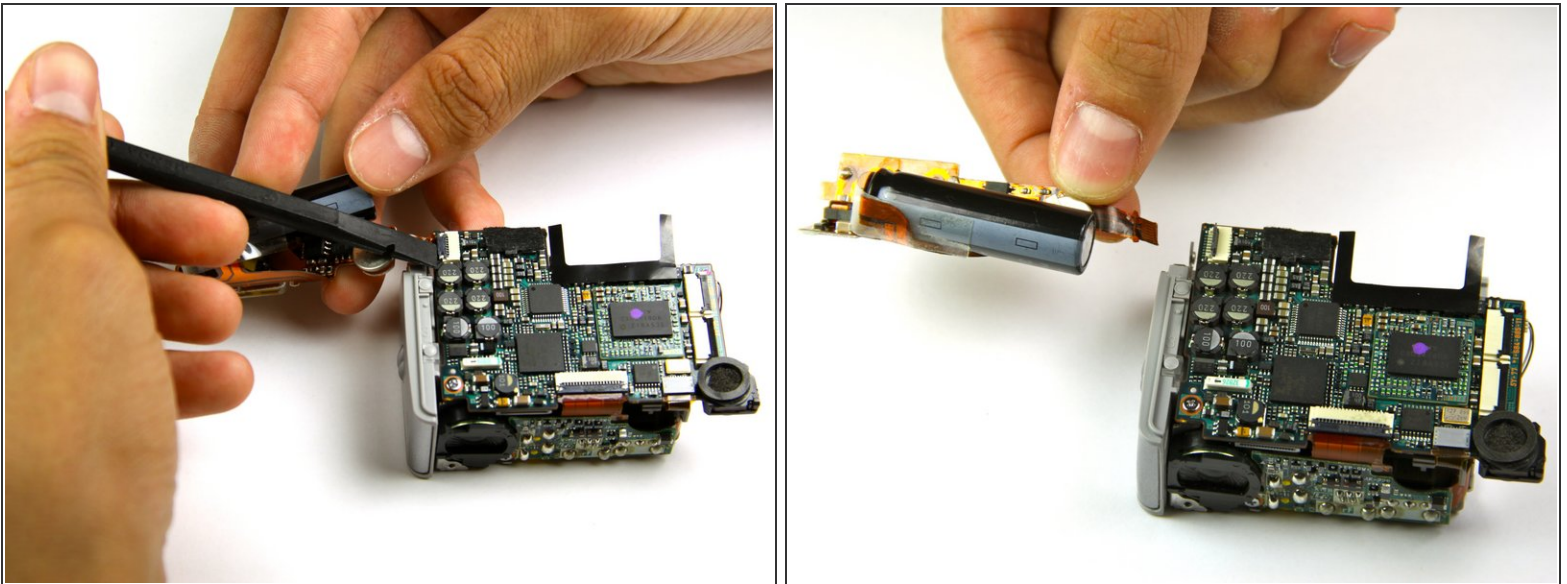


## Step 19



- Remove the flash mechanism. It is held in place by a clip on the side of the camera.
- The capacitor and flash will rotate out, still attached by a ribbon cable on the left.

## Step 20



- Lift up the black tab with the spudger.
- Gently remove the ribbon cable from the rest of the camera.
- The flash component is now completely separate from the rest of the camera.

To reassemble your device, follow these instructions in reverse order.

This document was generated on 2019-09-19 02:23:15 PM (MST).

