



Sony Cyber-shot DSC-S2100 LCD Replacement

This is a straight forward repair with no hidden screws or cables.

Written By: oldturkey03



INTRODUCTION

Here is a straight forward repair of broken LCD. The repair should take no longer than 15 minutes. Replacement LCD's are available for under USD \$20.



TOOLS:

- [Phillips #00 Screwdriver](#) (1)
- [iFixit Opening Tools](#) (1)



PARTS:

- [Replacement LCD](#) (1)

Step 1 — LCD



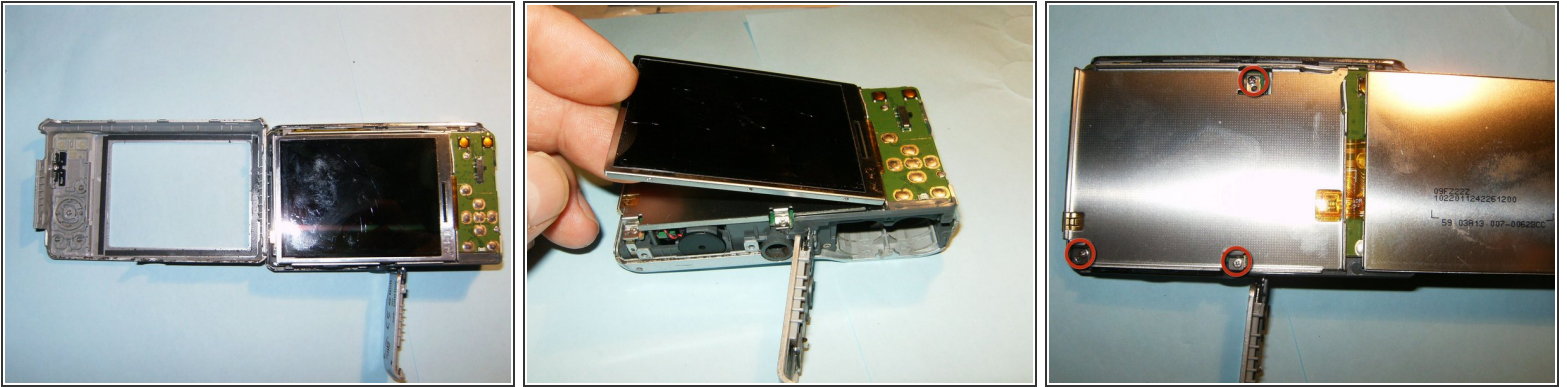
- The broken LCD is immediately visible when the camera is turned on.
- Remove the batteries and, if so equipped, the memory card.
- Remove the three Philips screws from the bottom of the camera with a Phillips #00 Screwdriver.

Step 2



- Remove the two Philips screws from the right side of the camera.
- Remove the two Philips screws from the left side of the camera.
- Split the housing by either using a plastic opening tool, or your finger nails. No excessive force is necessary. For ease of accomplishment, start at the battery compartment.

Step 3



- Once the rear case has been removed, the LCD and frame are easily identified.
- Fold the LCD to the right, away from the frame.
- ⚠ Do not try to remove the LCD yet since the ribbon cable is still connected.
- Remove the three Philips screws from the LCD frame.

Step 4



- When the LCD frame is removed, the ribbon cable becomes clearly visible.
- Flip the LCD to its left side. Open the clip of the connector by moving the black lock to the right.
- Remove the LCD

Step 5



- Ensure the screen displayed greets you, once you reassembled your camera

To reassemble your device, follow these instructions in reverse order.