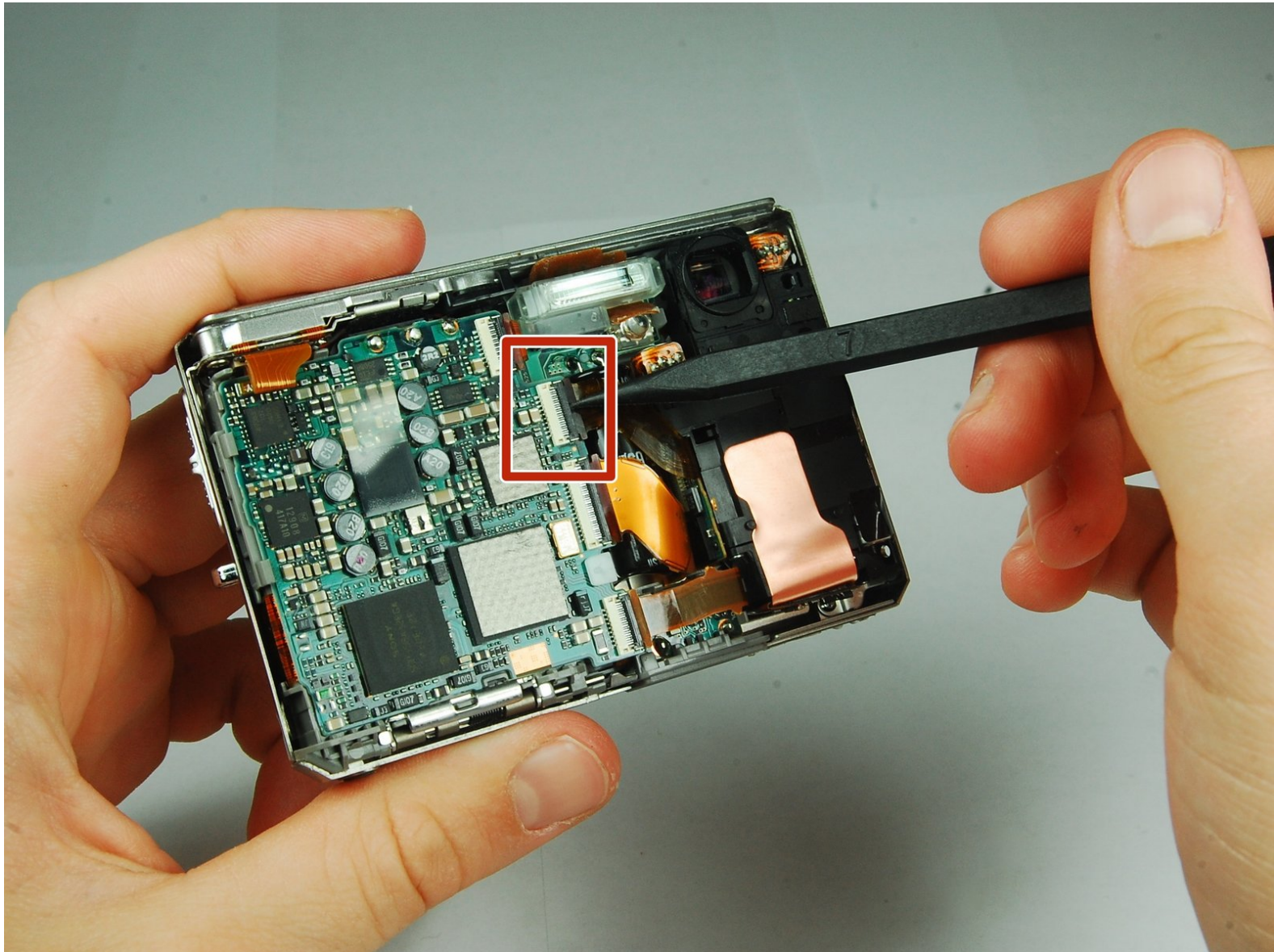




Sony Cyber-shot DSC-T1 CCD Sensor Module Replacement

How to replace a Sony Cyber-shot DSC-T1 CCD sensor module.

Written By: iDeleted



INTRODUCTION

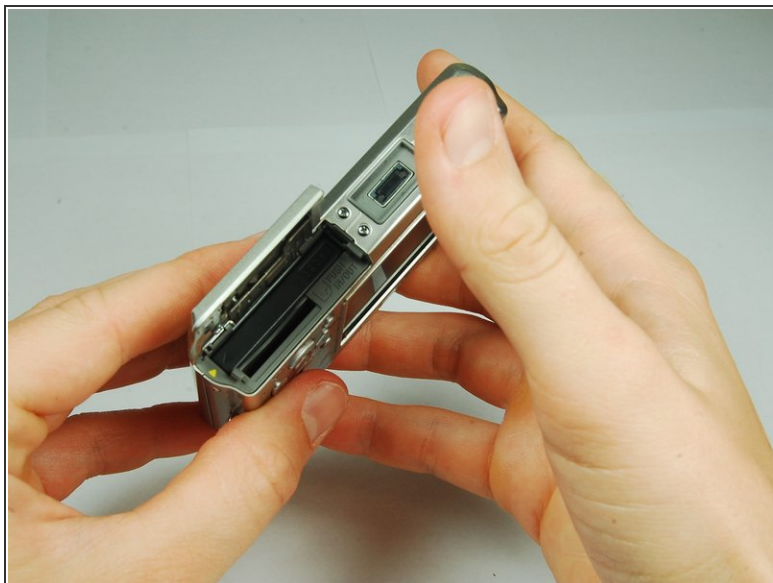
Is your LCD screen acting strange? Replacing the CCD Sensor Module is a straight forward task that will increase the clarity of your screen.



TOOLS:

- [Phillips #00 Screwdriver](#) (1)
 - [Spudger](#) (1)
-

Step 1 — Battery



- Locate the battery door at the bottom of the camera.
- Press down on the door and slide it back. The door will pop open.


Step 2



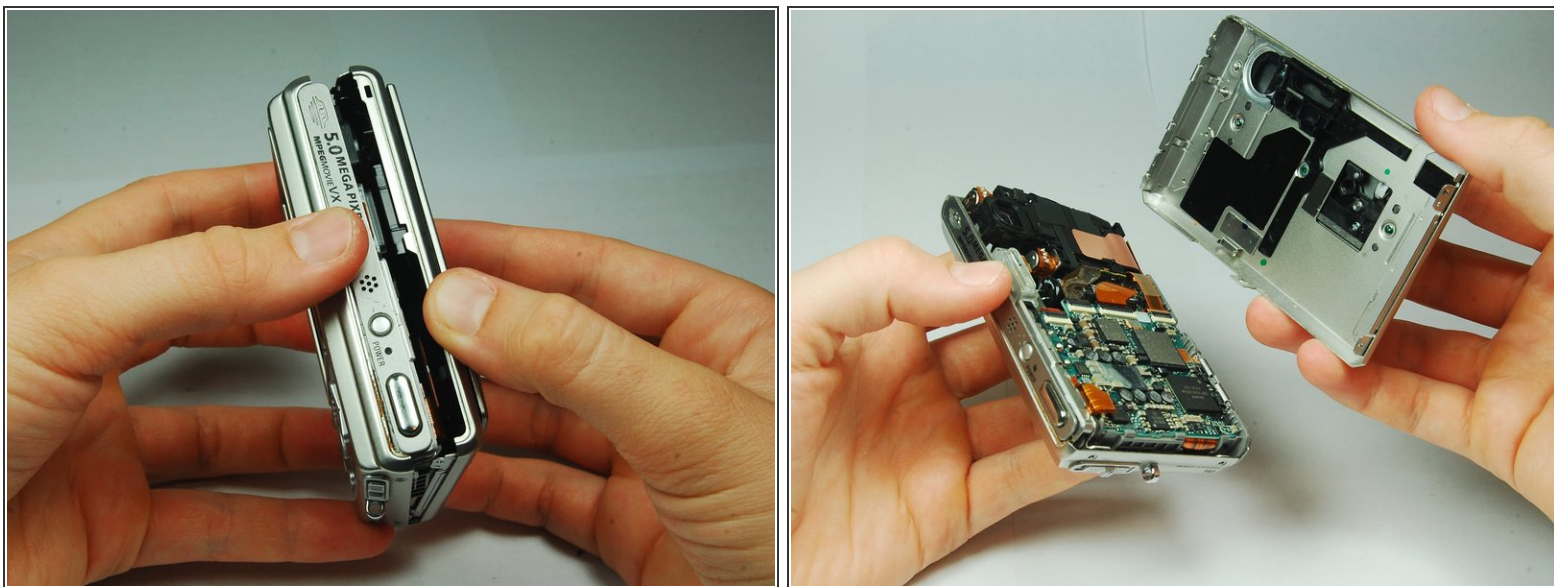
- Remove the battery from the door that you opened in the previous step.

Step 3 — Disassembling Sony Cyber-shot DSC-T1 Removing Front Cover



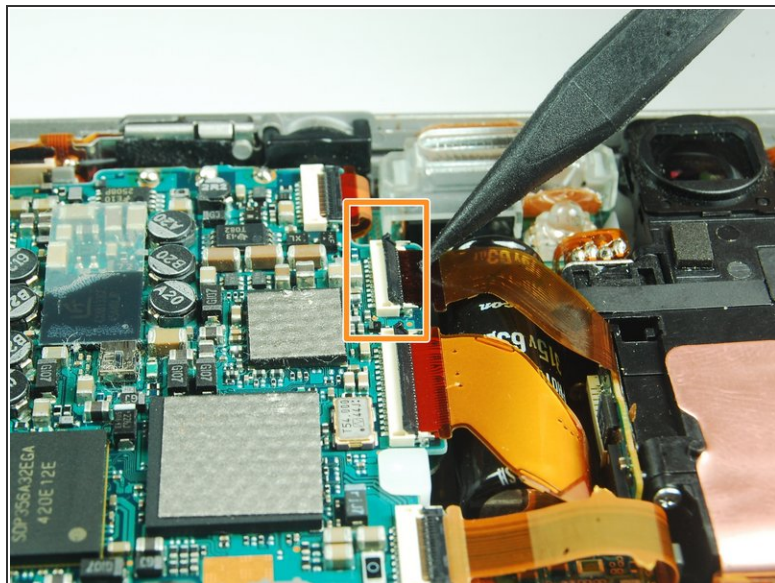
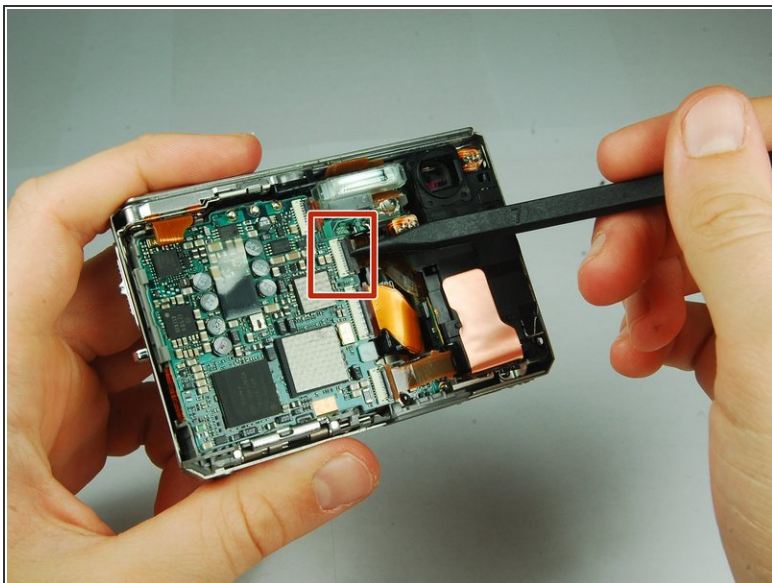
-  There are two screws on the left and right sides of the camera, and two screws on the bottom.
- Use a PH00 screwdriver and remove the six 2.9mm screws.

Step 4



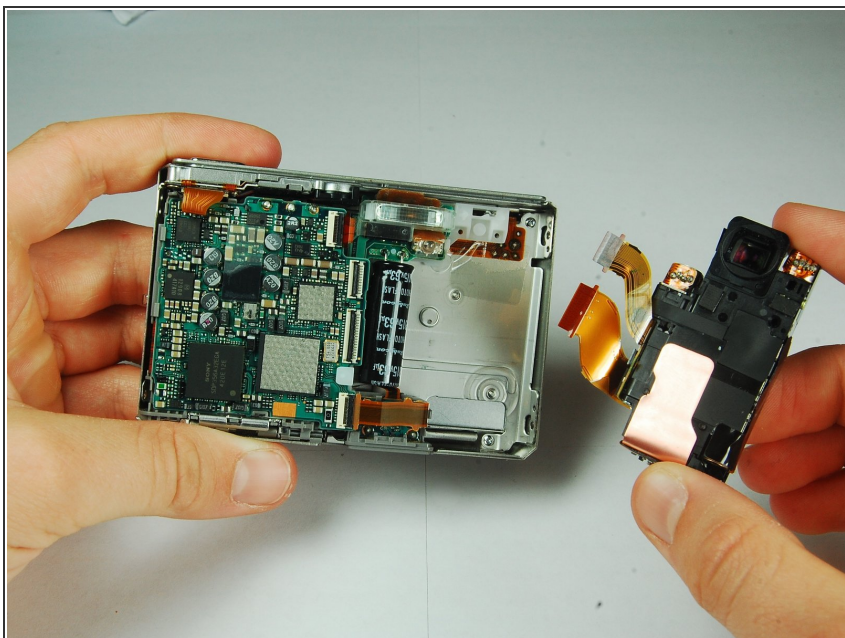
- Use hands to gently pry the front casing away from the camera.

Step 5 — CCD Sensor Module



- Use the tip of a spudger to flip up the tab on the ZIF connector securing the motherboard ribbon cable.
- The second picture shows what these tabs look like in their open positions.

Step 6



- Grasp the CCD Sensor Module and remove it.

To reassemble your device, follow these instructions in reverse order.