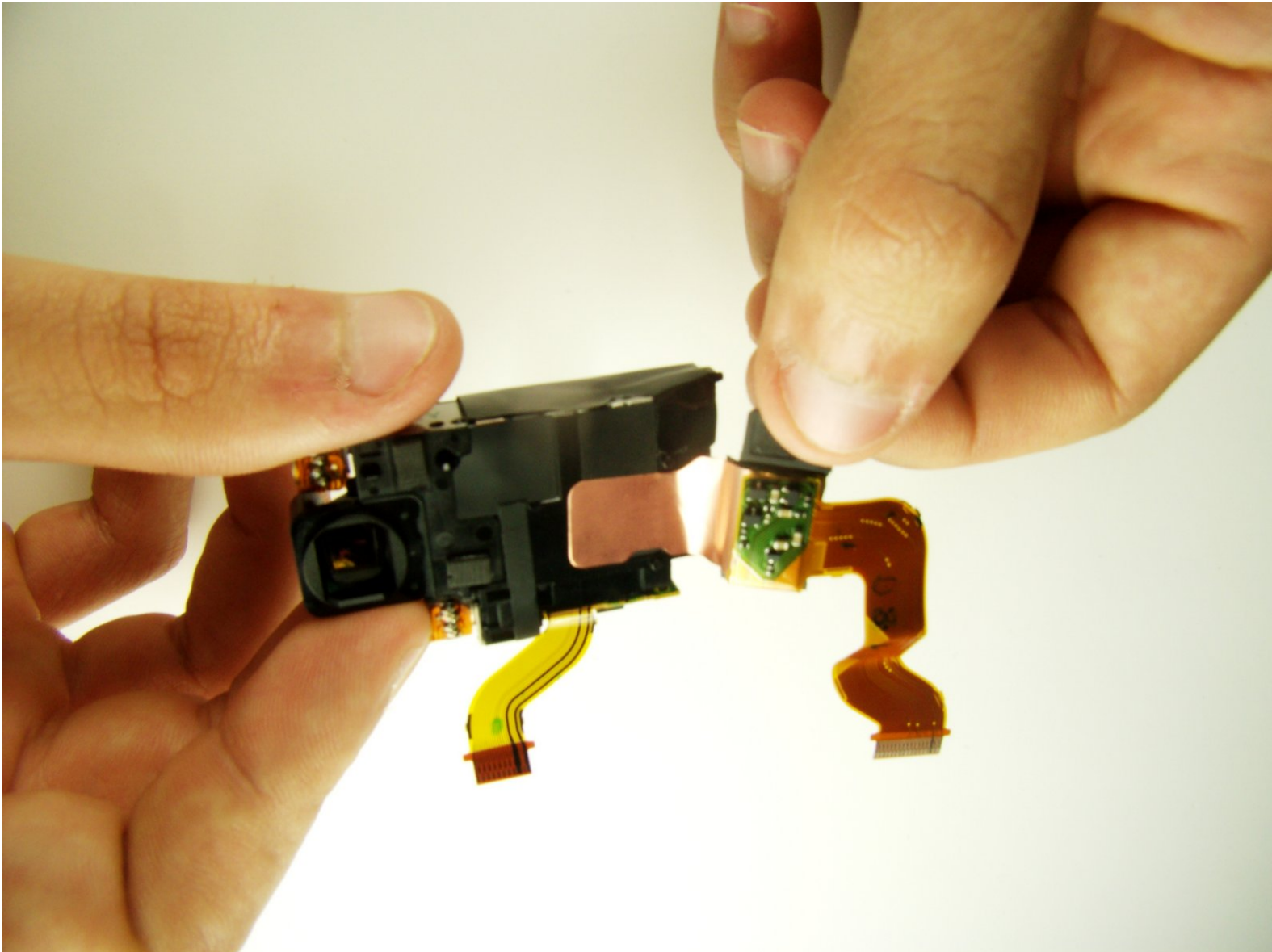




# Sony Cyber-shot DSC-T1 CCD chip Replacement

Replace a defunct CCD (charge coupled device) chip from the camera.

Written By: Rosario



---

## INTRODUCTION

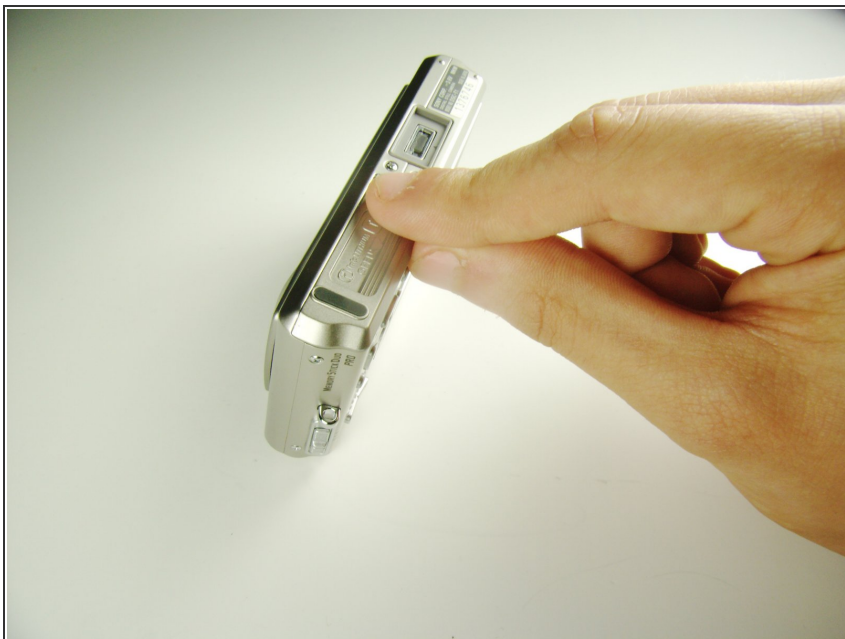
Follow this guide for the process of replacing the CCD chip, which is responsible for converting light into digital images. For safety reasons, battery should be first removed.

---

### TOOLS:

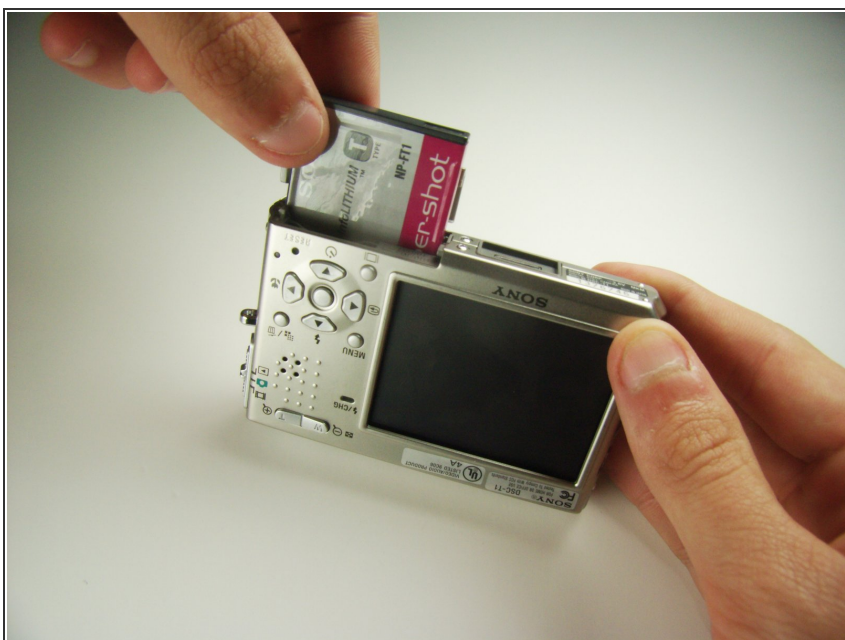
- [Tweezers](#) (1)
  - [iFixit Opening Tools](#) (1)
  - [JIS #0 Screwdriver](#) (1)
-

## Step 1 — Battery



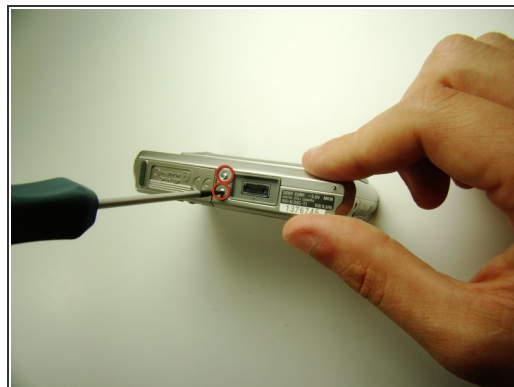
- Locate the cover on the bottom of the camera.
  - Slide the cover towards the back of the camera.
- ⚠ Be careful—the battery can slide out on its own.

## Step 2



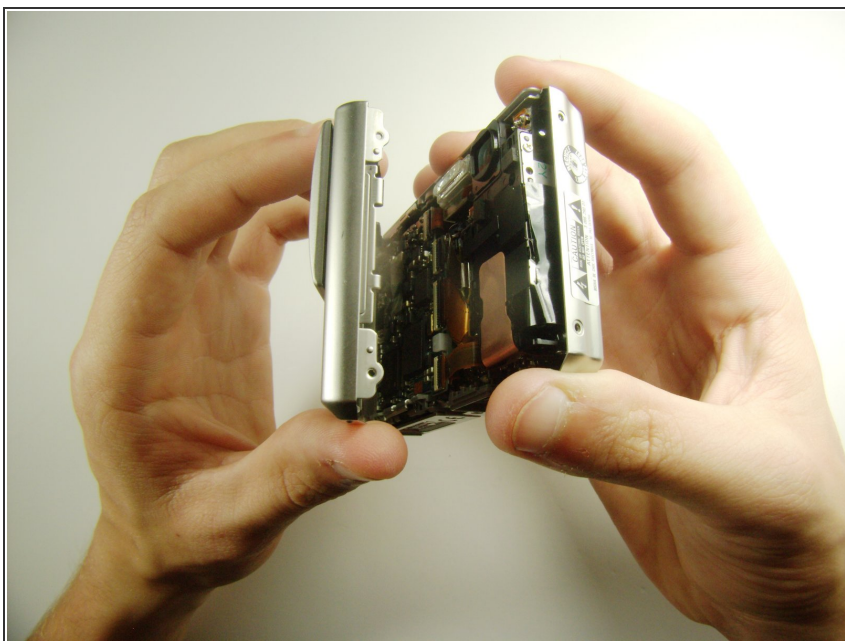
- Carefully remove the exposed battery.
- ⓘ If it is difficult to remove, flip over the camera and the battery will slide out.

### Step 3 — CCD chip



- Locate and remove the 3mm screws on the bottom and sides of the camera with a JIS size #0 screwdriver.

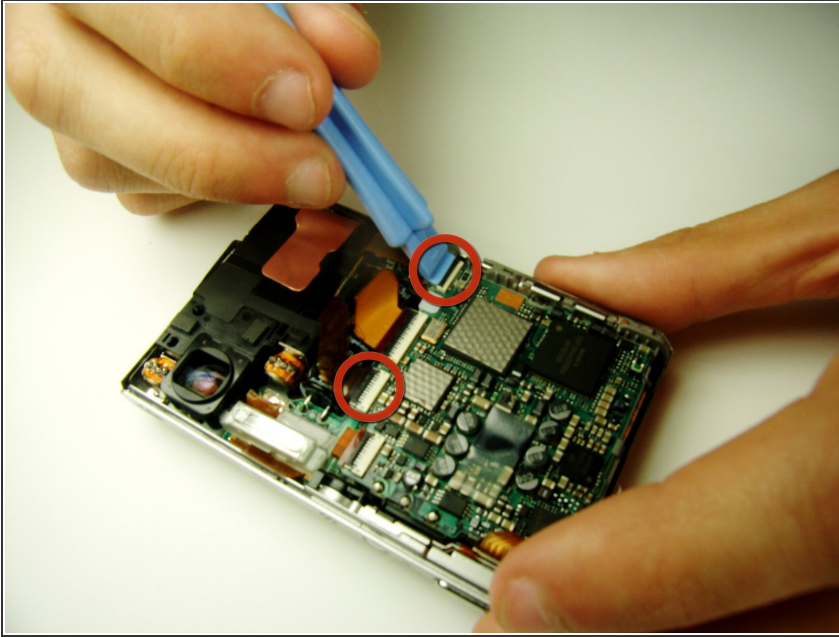
### Step 4



- Pull the two halves of the camera apart.
- Place the two halves down with the insides facing you.

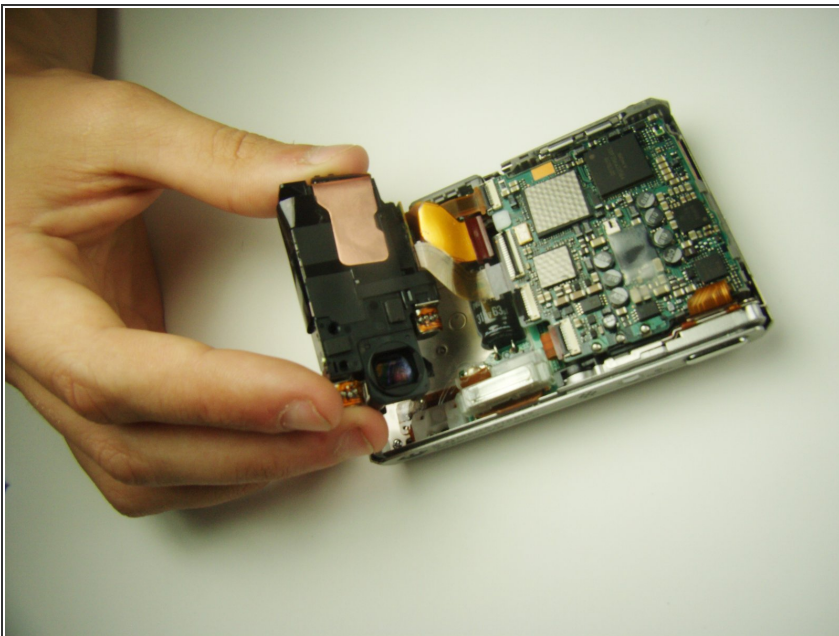


## Step 5



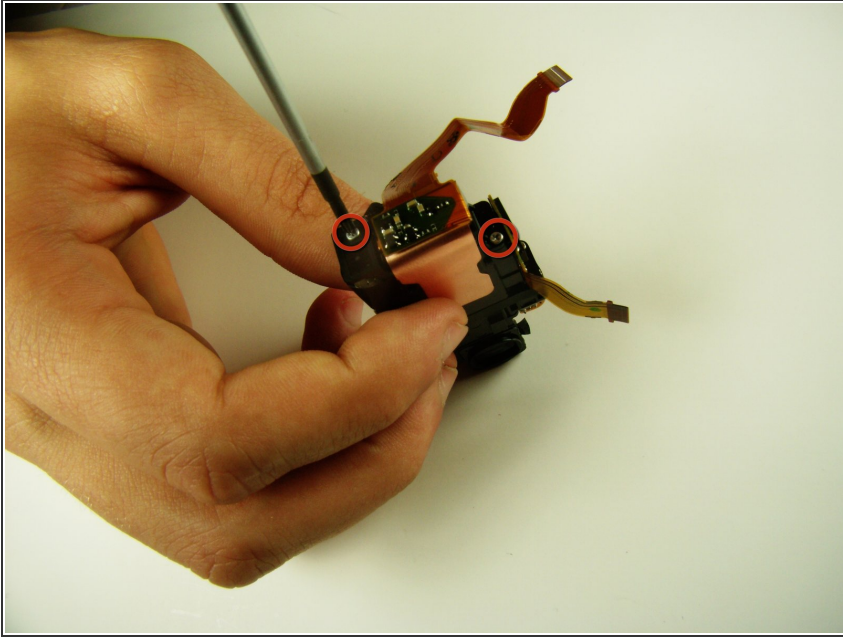
- Find the two clips holding the motherboard to the black lens box.
- Slide the plastic opening tool in between the ribbon and the black part of the clip, then flip it up. (If difficult, your fingernail can also be used)

## Step 6



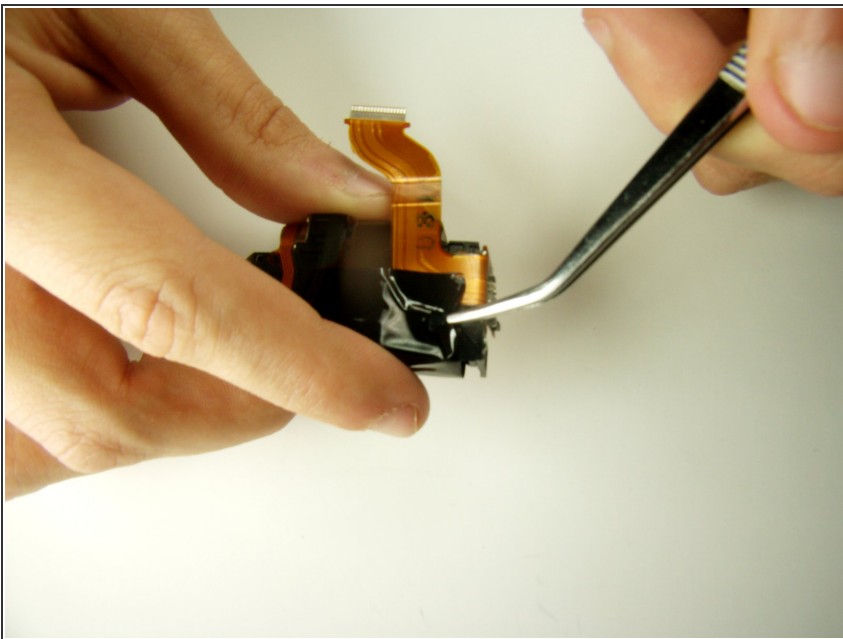
- After releasing the clips, pull out the black lens box.
- ⓘ If the black lens box does not come out, go back to the previous step and make sure you released the correct clips.

## Step 7



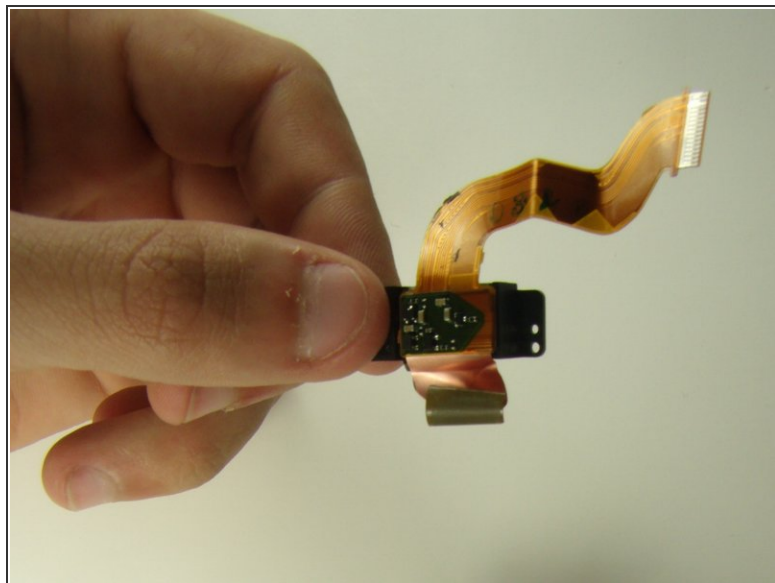
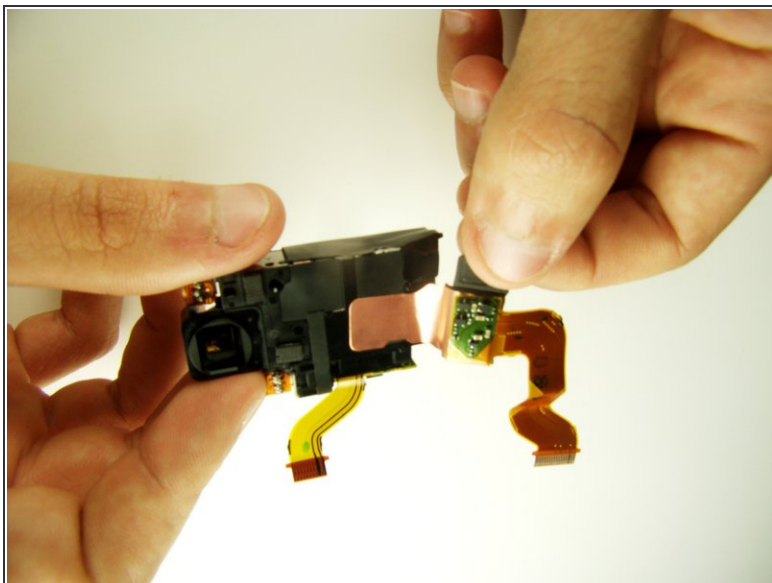
- Locate and unscrew the two 3mm screws on the bottom of the black lens box with the JIS #0 screwdriver.

## Step 8



- With the tweezers remove the black tape to detach the chip from the lens box.

## Step 9



- Grab the chip with your thumbs and **carefully** pull it off.
- ⚠ The copper tab will be glued to the lens box. Be careful not to rip it.
- ⓘ The attached copper ribbons are part of the CCD chip.

To reassemble your device, follow these instructions in reverse order.