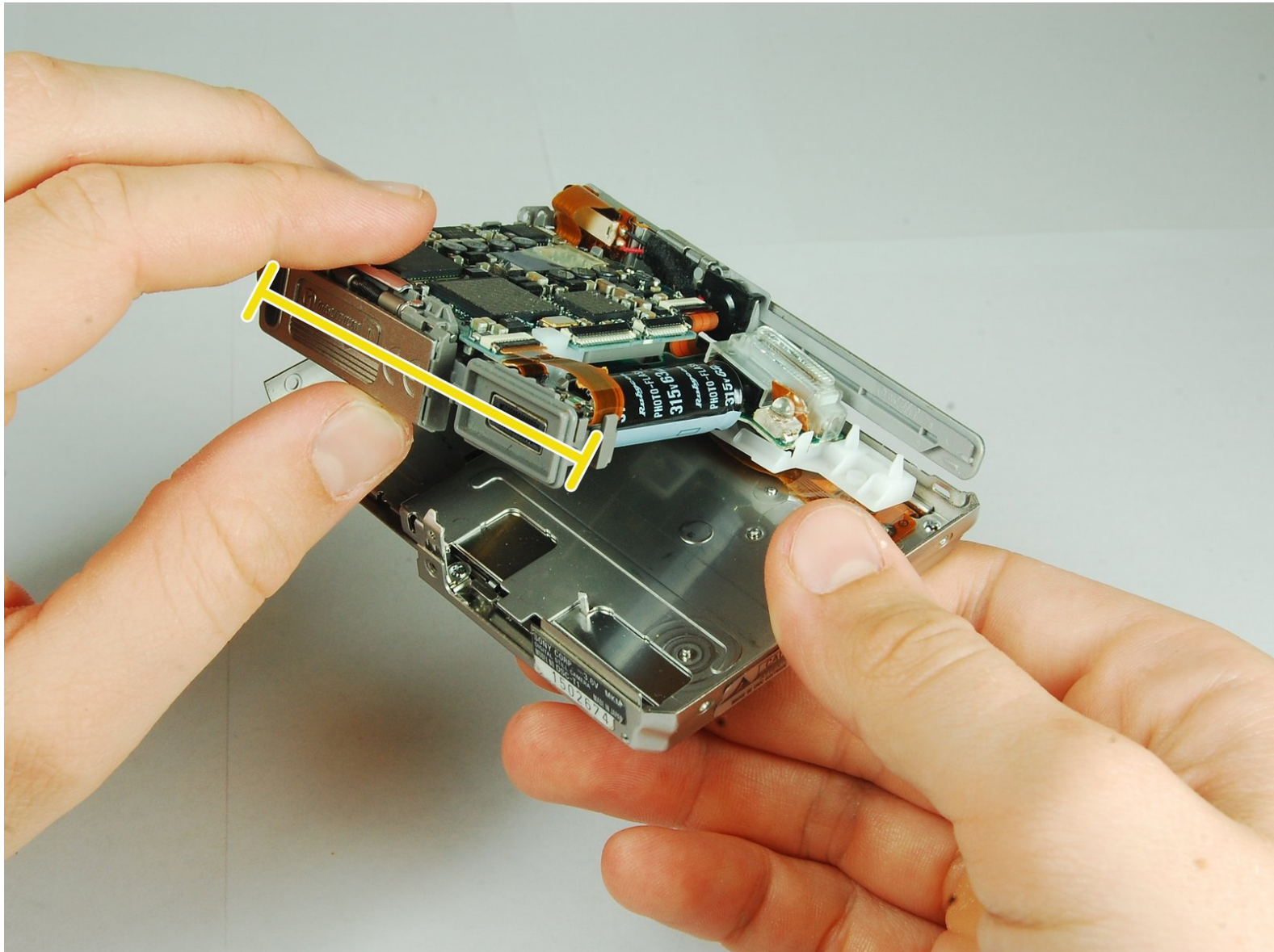




Sony Cyber-shot DSC-T1 Flash Module Replacement

Instructions for replacing the Sony Cyber-shot DSC-T1 flash module.

Written By: iDeleted



INTRODUCTION

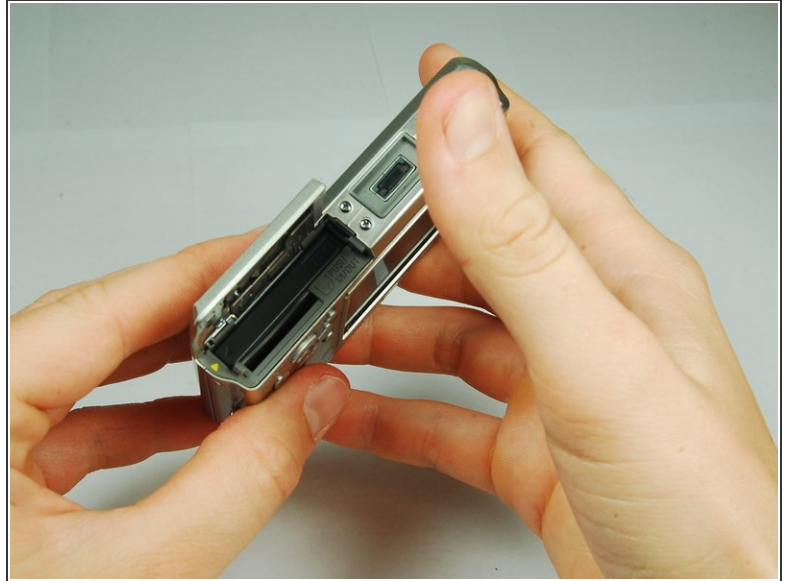
Having problems with the camera flash? Replacing the Flash Module is easy!



TOOLS:

- [Phillips #00 Screwdriver](#) (1)
 - [Spudger](#) (1)
-

Step 1 — Battery



- Locate the battery door at the bottom of the camera.
- Press down on the door and slide it back. The door will pop open.


Step 2



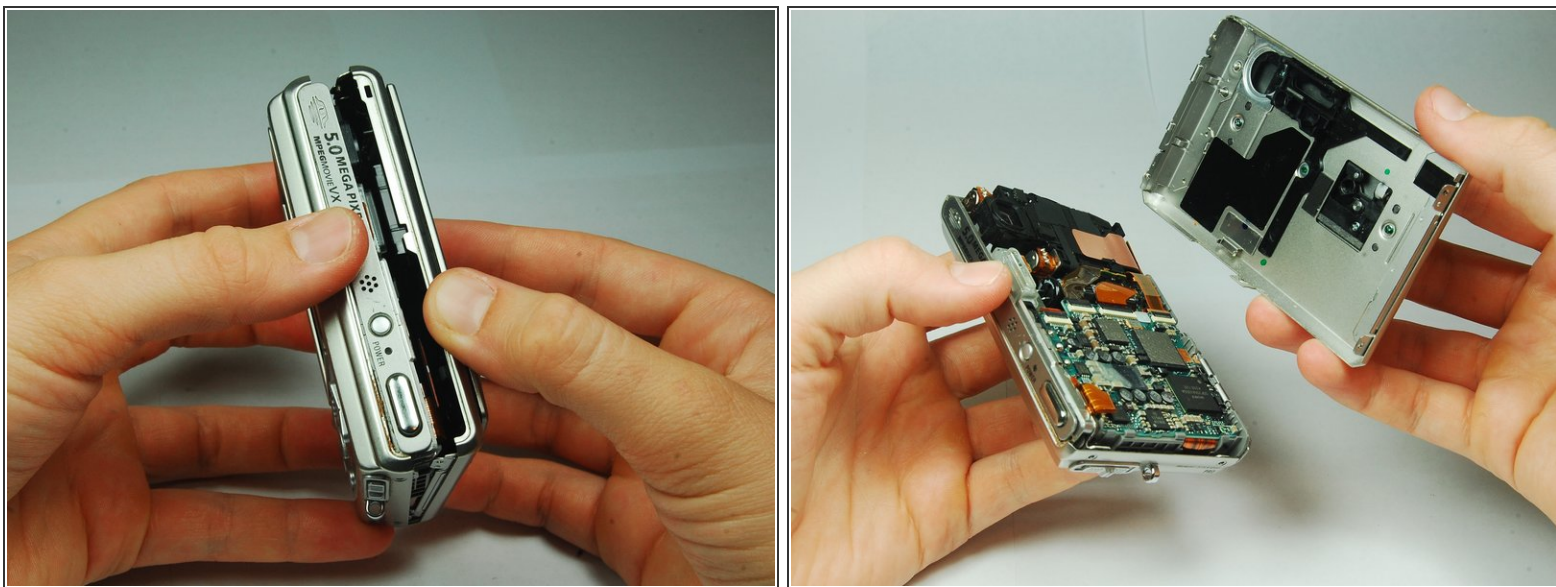
- Remove the battery from the door that you opened in the previous step.

Step 3 — Disassembling Sony Cyber-shot DSC-T1 Removing Front Cover



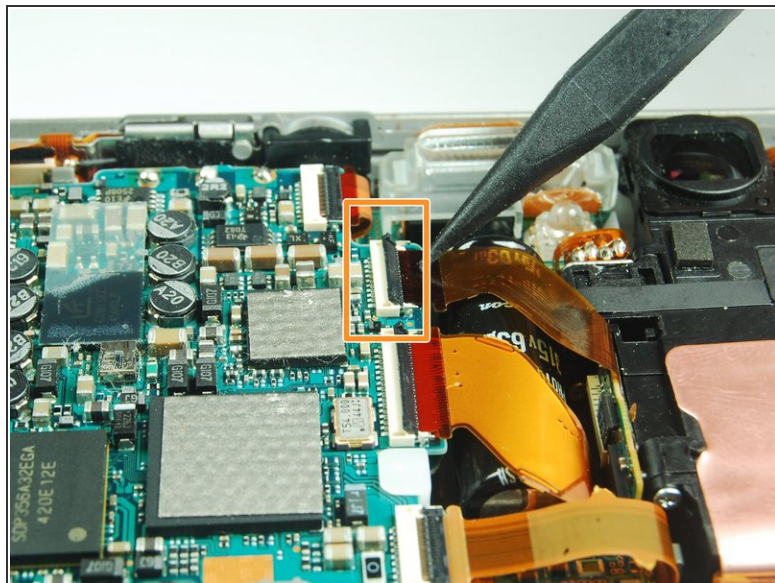
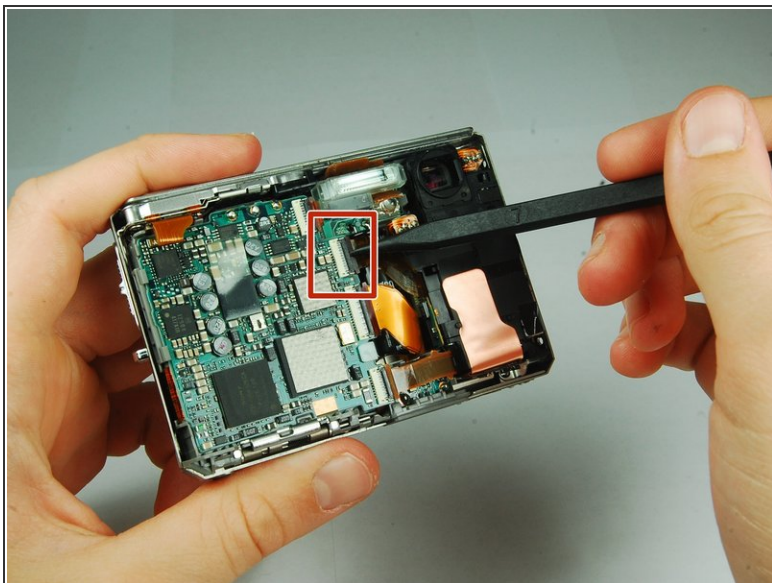
-  There are two screws on the left and right sides of the camera, and two screws on the bottom.
- Use a PH00 screwdriver and remove the six 2.9mm screws.

Step 4



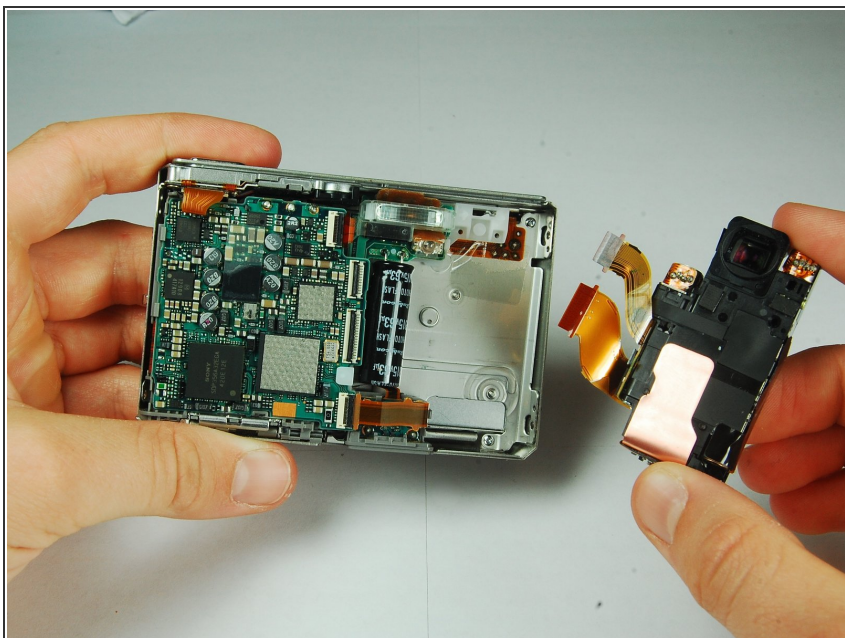
- Use hands to gently pry the front casing away from the camera.

Step 5 — CCD Sensor Module



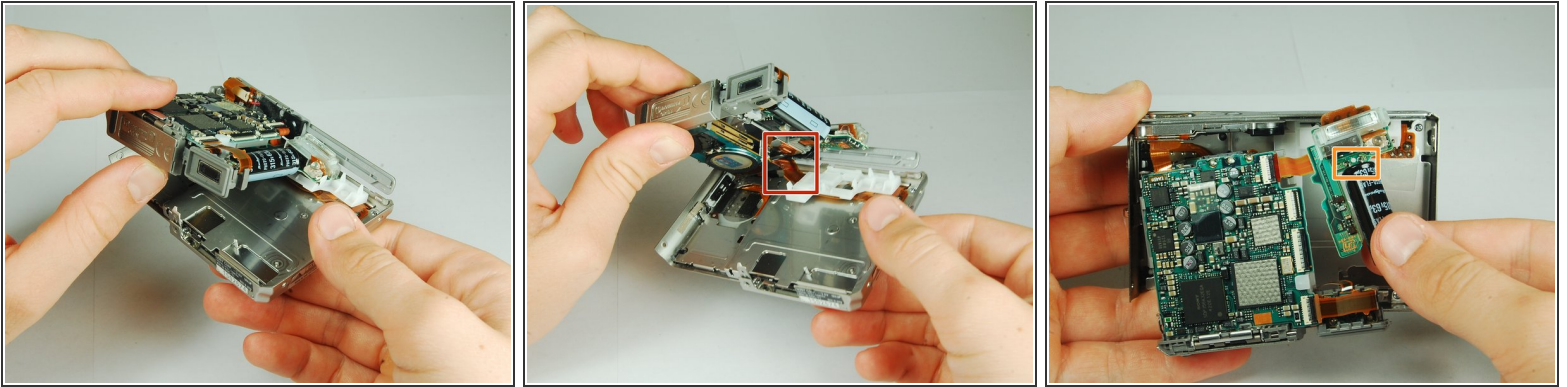
- Use the tip of a spudger to flip up the tab on the ZIF connector securing the motherboard ribbon cable.
- The second picture shows what these tabs look like in their open positions.


Step 6



- Grasp the CCD Sensor Module and remove it.

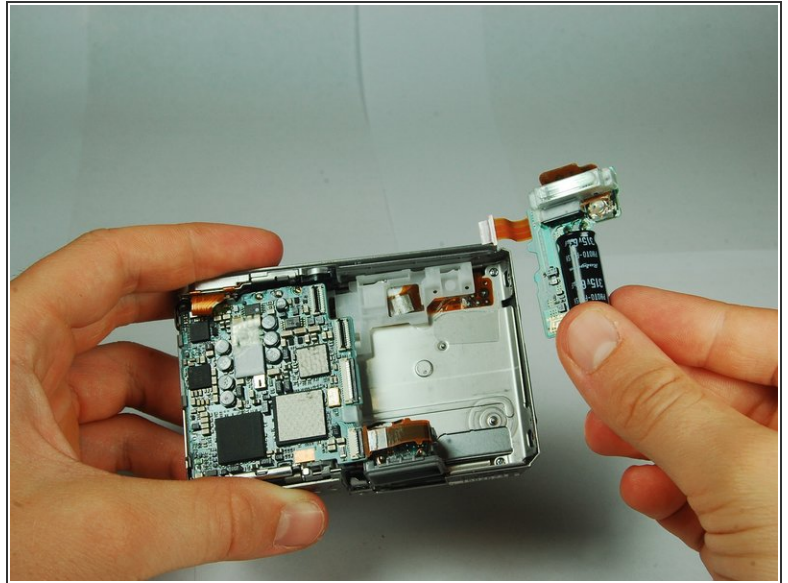
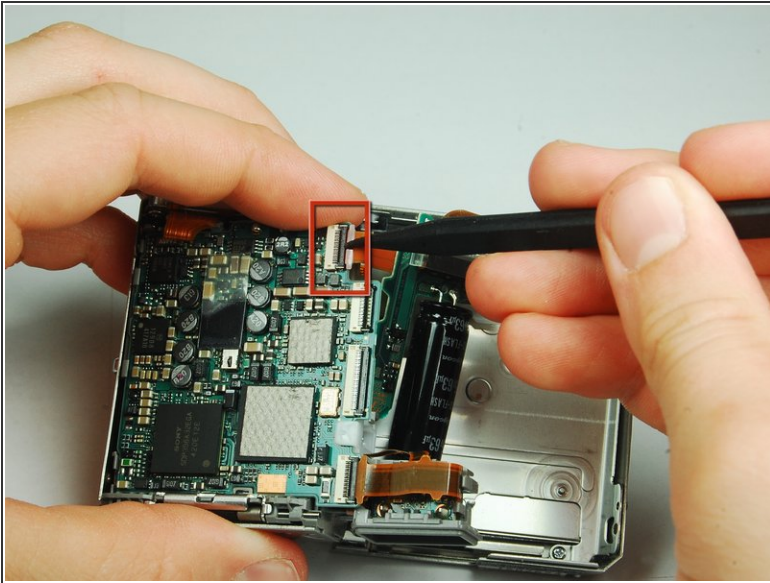
Step 7 — Flash Module



 This camera houses a very strong capacitor (the black cylinder). Avoid touching anything around the two wires coming out of the top. Doing so will risk serious electric shock.

- Carefully disengage the internal components from the casing by lifting at the bottom end and giving a gentle tug.
- The components are still connected to the casing via cables, but they are much more maneuverable.
- The flash module is shown on the right hand side.

Step 8



- Use the tip of a spudger to flip up the tab on the ZIF connector securing the motherboard ribbon cable.
- Grasp the flash module by the bottom and remove it.

To reassemble your device, follow these instructions in reverse order.