



Sony Cyber-shot DSC-T1 LCD screen Replacement

This will guide you the necessary steps to replacing the LCD screen.

Written By: Paul Elrich



INTRODUCTION

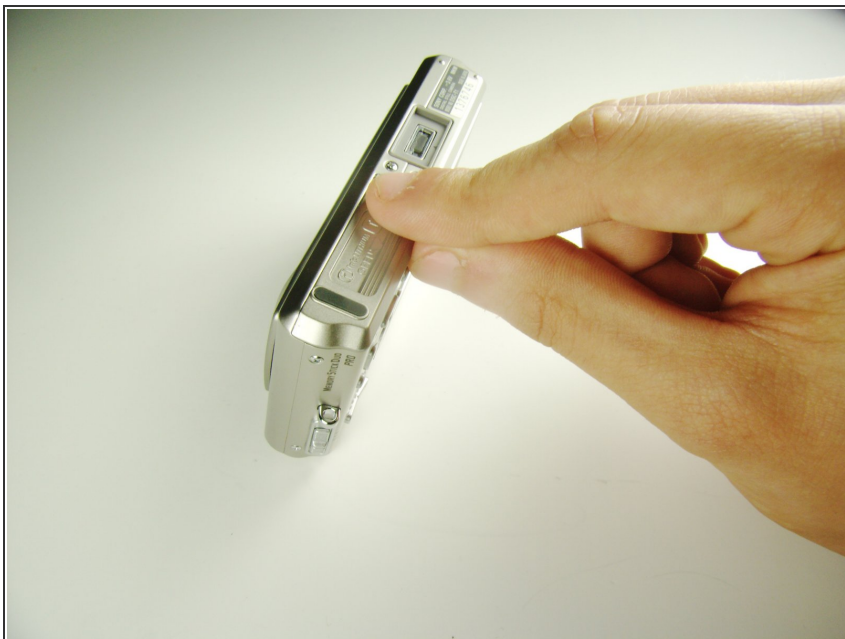
The LCD screen is an essential components to the camera that will allow view-back of images. It is required to first remove the battery, the CCD black plastic housing, and the motherboard to access the LCD screen.



TOOLS:

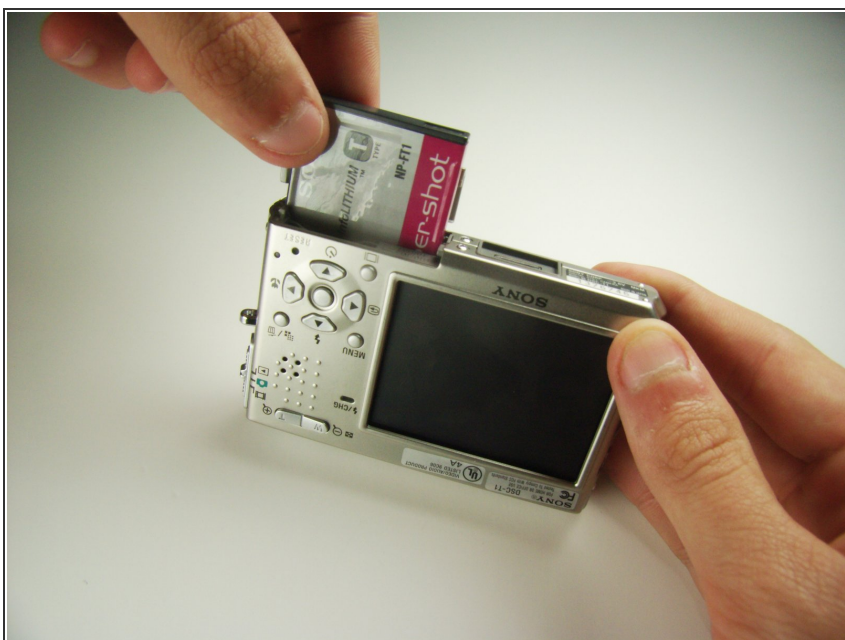
- [Phillips #00 Screwdriver](#) (1)
 - [iFixit Opening Tools](#) (1)
-

Step 1 — Battery



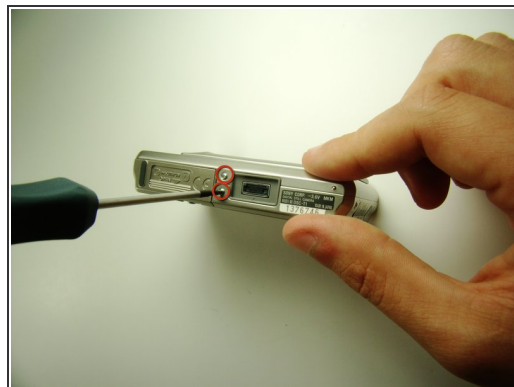
- Locate the cover on the bottom of the camera.
 - Slide the cover towards the back of the camera.
- ⚠ Be careful—the battery can slide out on its own.

Step 2



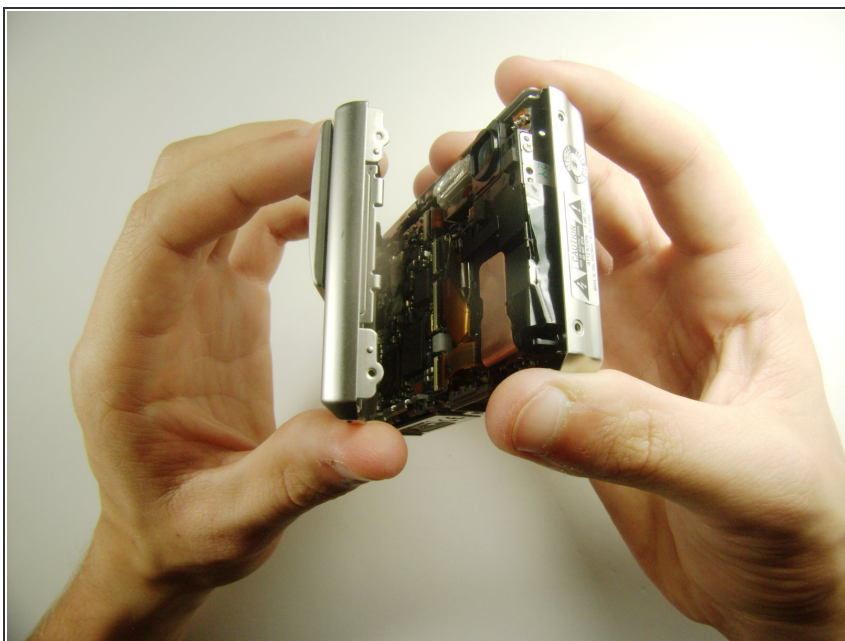
- Carefully remove the exposed battery.
- ⓘ If it is difficult to remove, flip over the camera and the battery will slide out.

Step 3 — Flash



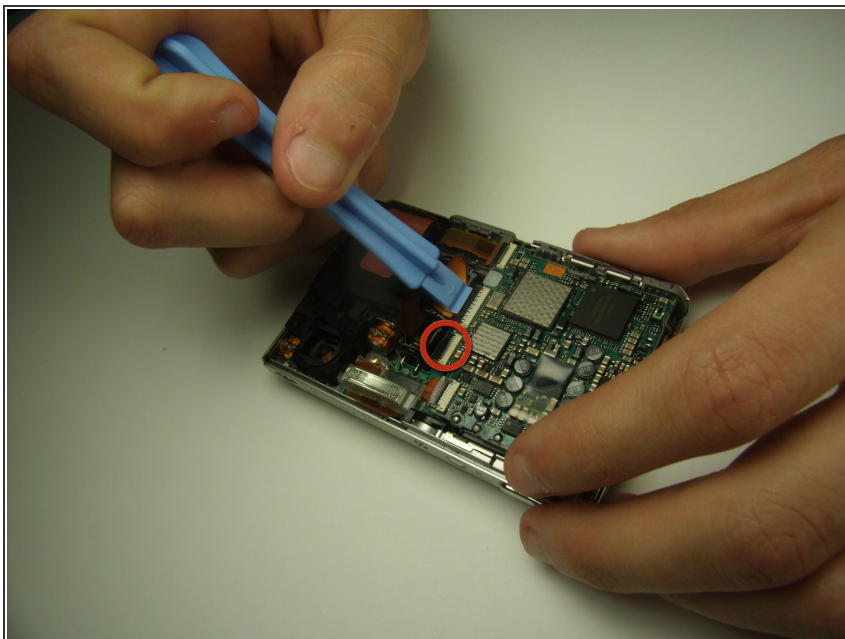
- Locate and remove the 3mm screws on the top and sides of the camera with the size 00 screwdriver.

Step 4



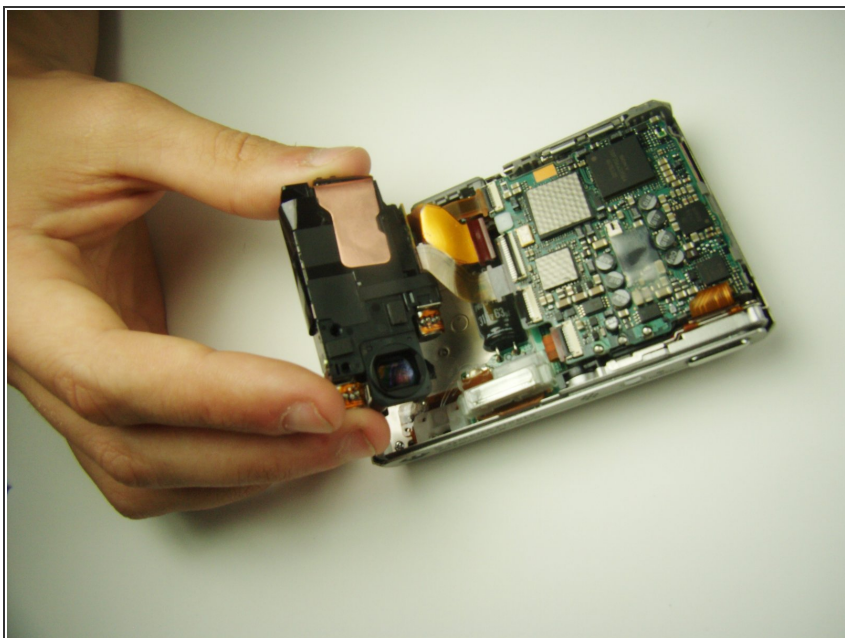
- Pull the two halves of the camera apart.
- Place the two halves down with the insides facing you.

Step 5



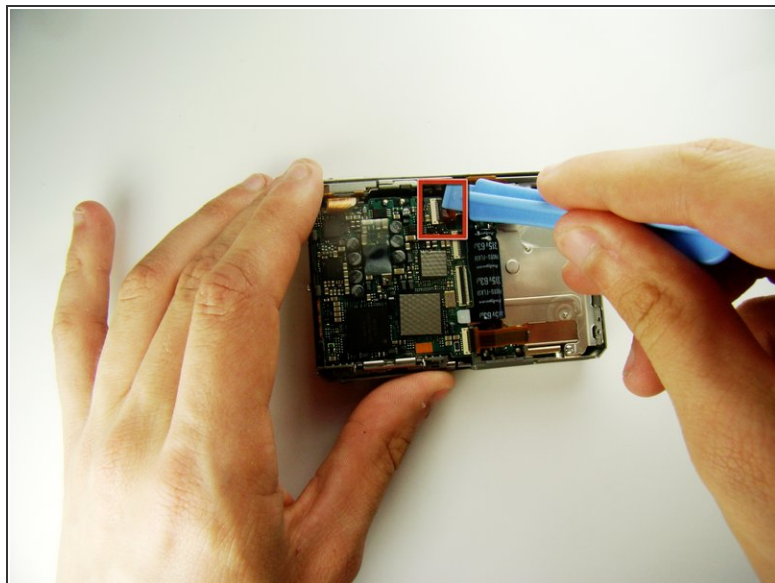
- Find the two clips holding the motherboard to the black lens box.
- Slide the plastic opening tool in between the ribbon and the black part of the clip, then flip it. (If difficult, your fingernail can also be used)

Step 6



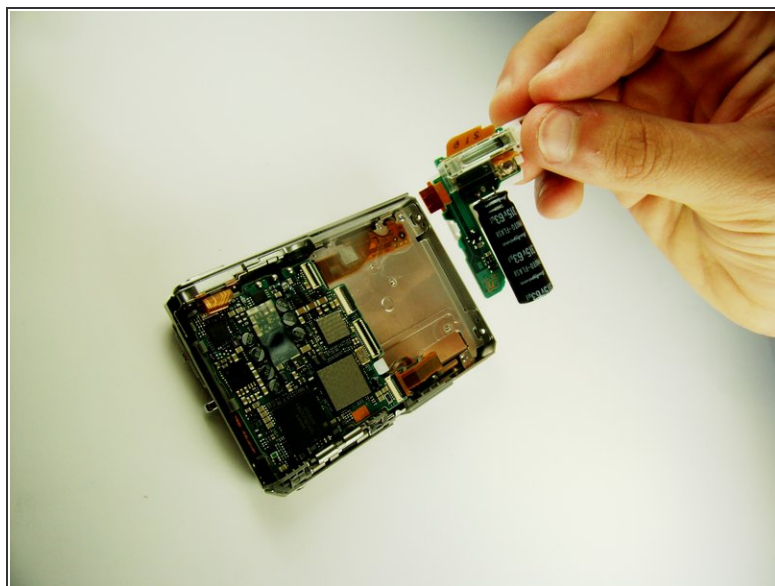
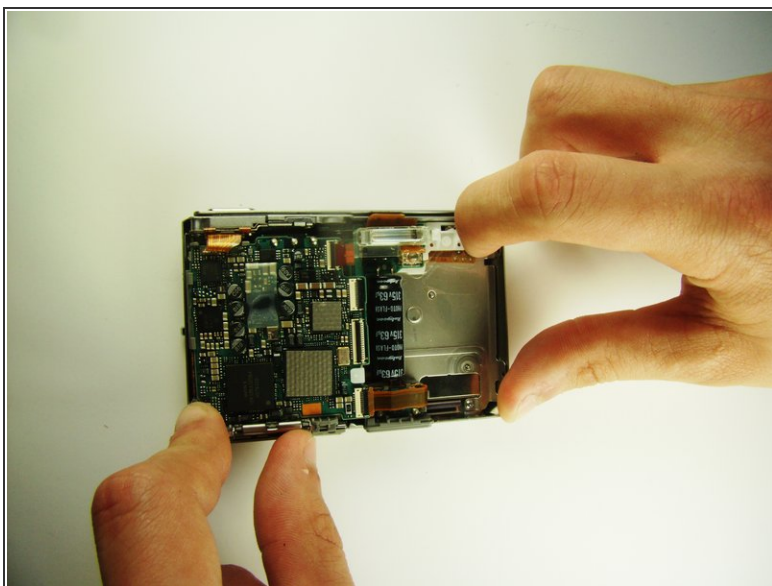
- After releasing the clips, pull out black lens box.

Step 7



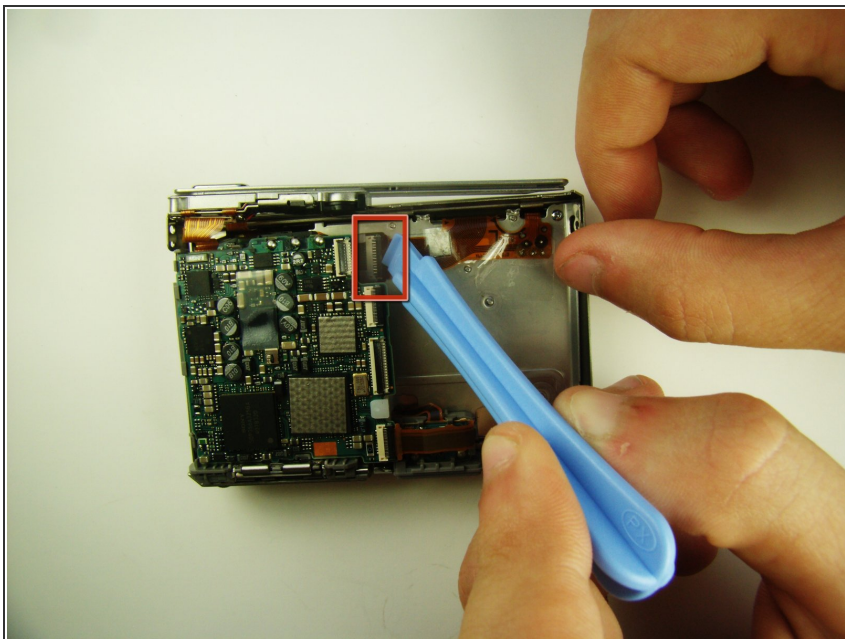
- Use the plastic opening tool to flip the clip.

Step 8



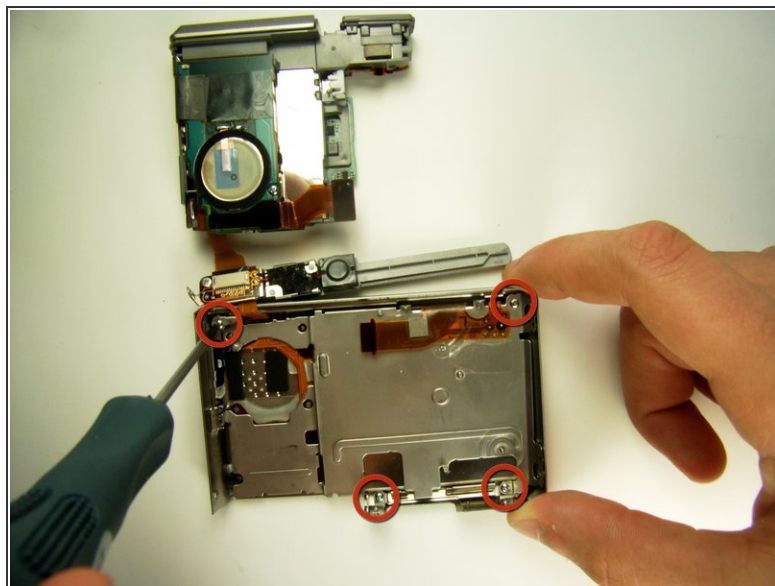
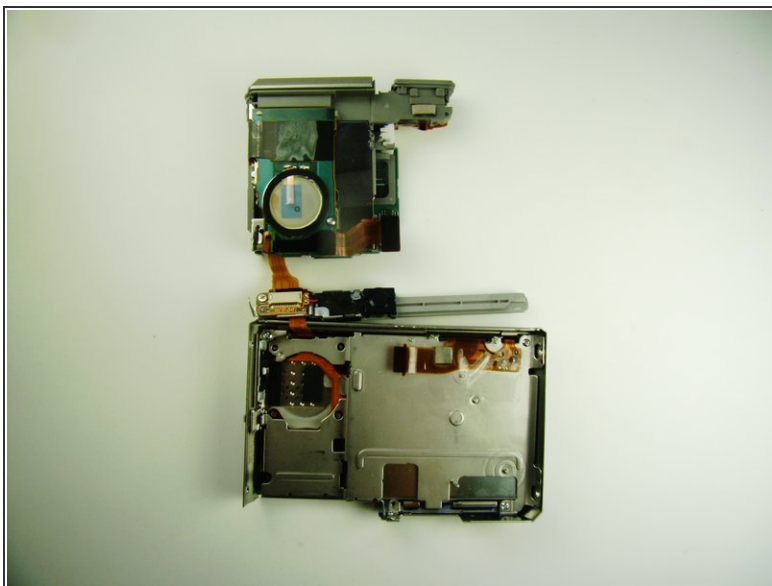
- Grab the white part and slide it to the right until it clicks.
- ⓘ This may require some force.
- Pull out the flash.

Step 9 — LCD screen



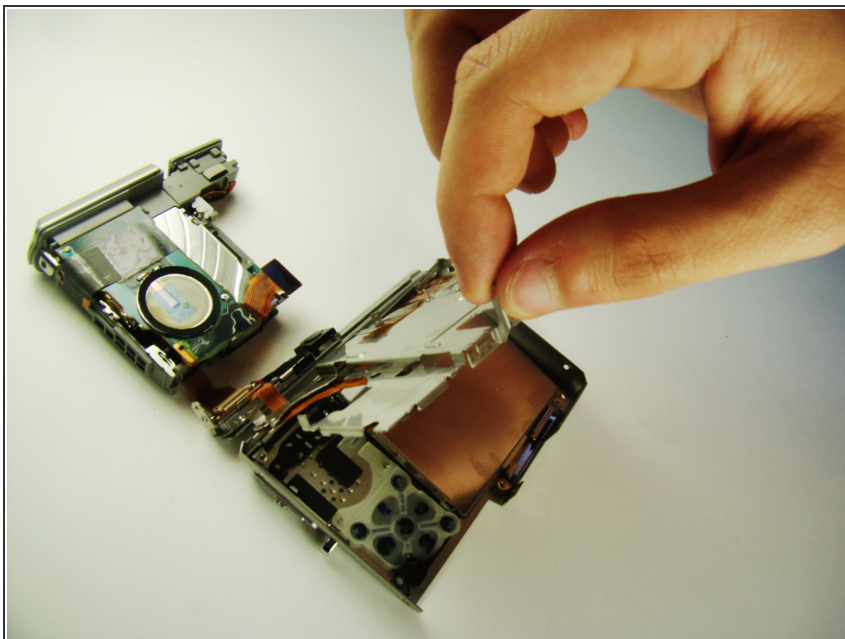
- Use the plastic opening tool to flip the top clip that holds the ribbon to the motherboard unit.

Step 10



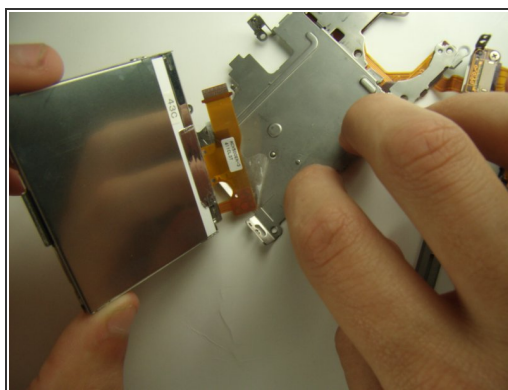
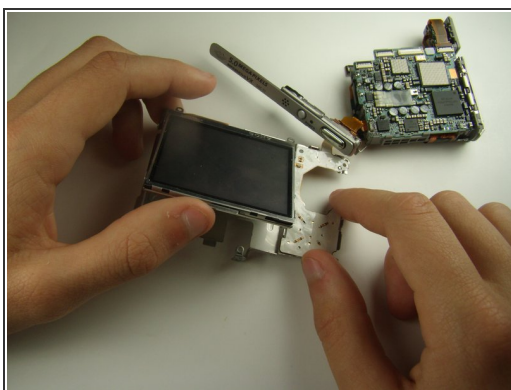
- Flip the motherboard unit up to expose the metal plate beneath it.
- Remove the four 3mm screws shown using the 00 screwdriver.

Step 11



- Lift and remove the metal plate covering the LCD screen from the camera.

Step 12



- Flip the LCD over to the other side of the camera.
- Peel the tape connecting the LCD to the camera.
- Remove LCD screen

To reassemble your device, follow these instructions in reverse order.