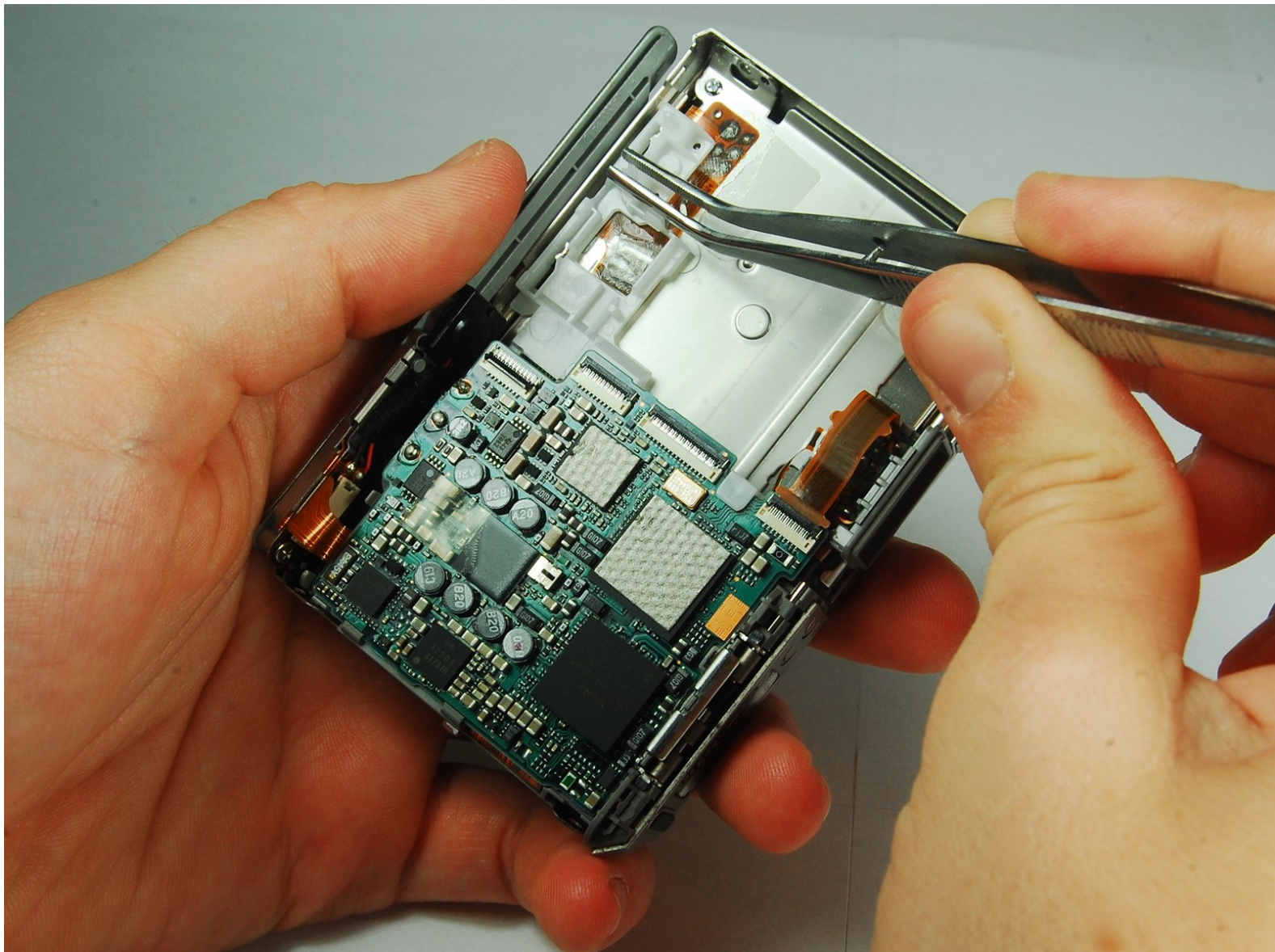




# Sony Cyber-shot DSC-T1 Motherboard Assembly Replacement

This guide demonstrates how to remove the internals of the Sony-Cyber-shot DSC-T1.

Written By: iDeleted



## INTRODUCTION

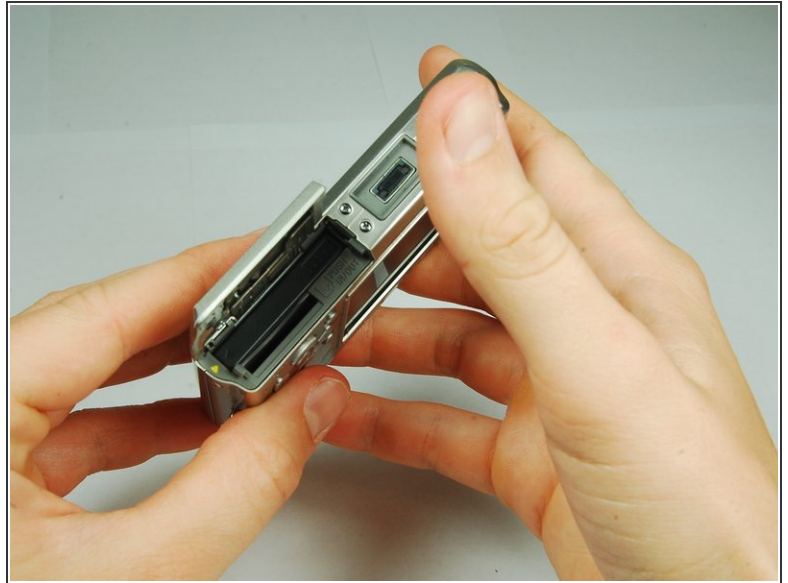
This guide gives step-by-step instructions on getting to the main internal component of the Cyber-shot DSC-T1 and then specifies how to detach them from the camera.

---

### TOOLS:

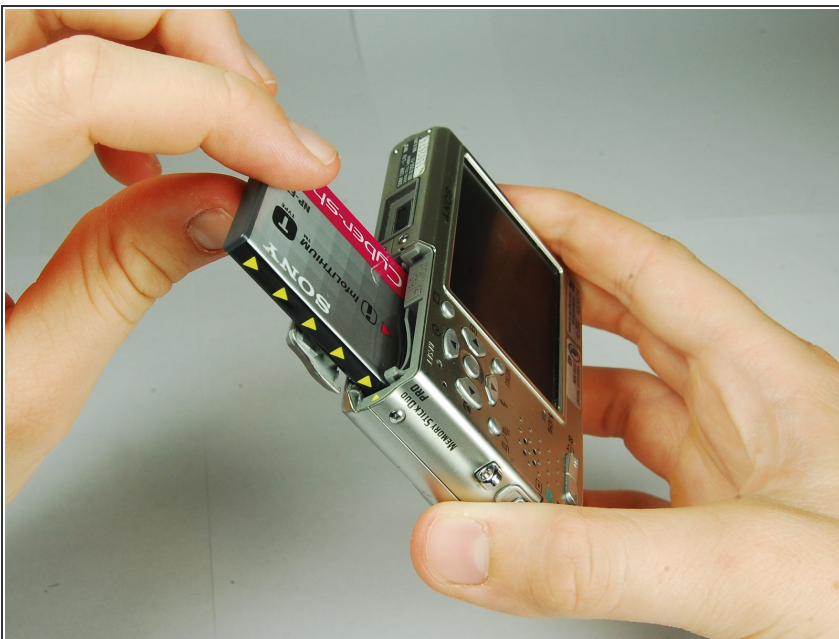
- [Phillips #00 Screwdriver](#) (1)
  - [Spudger](#) (1)
  - [Tweezers](#) (1)
-

## Step 1 — Battery



- Locate the battery door at the bottom of the camera.
- Press down on the door and slide it back. The door will pop open.

## Step 2




- Remove the battery from the door that you opened in the previous step.

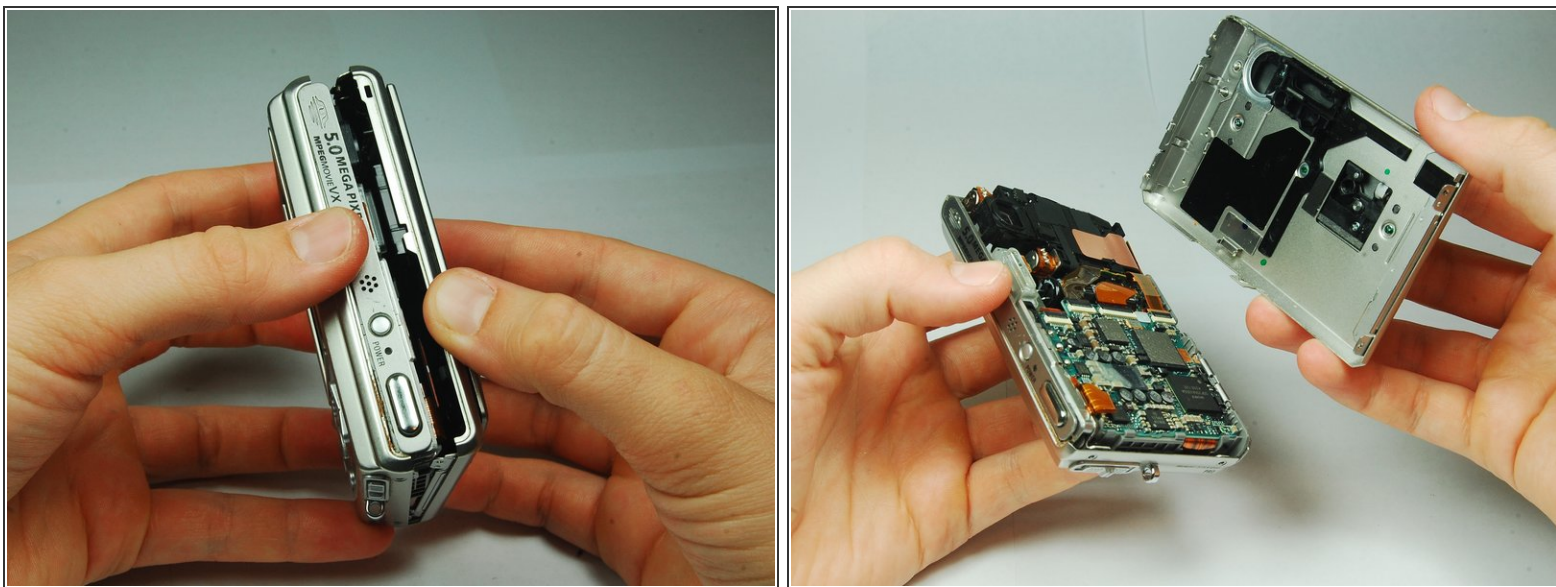


### Step 3 — Disassembling Sony Cyber-shot DSC-T1 Removing Front Cover



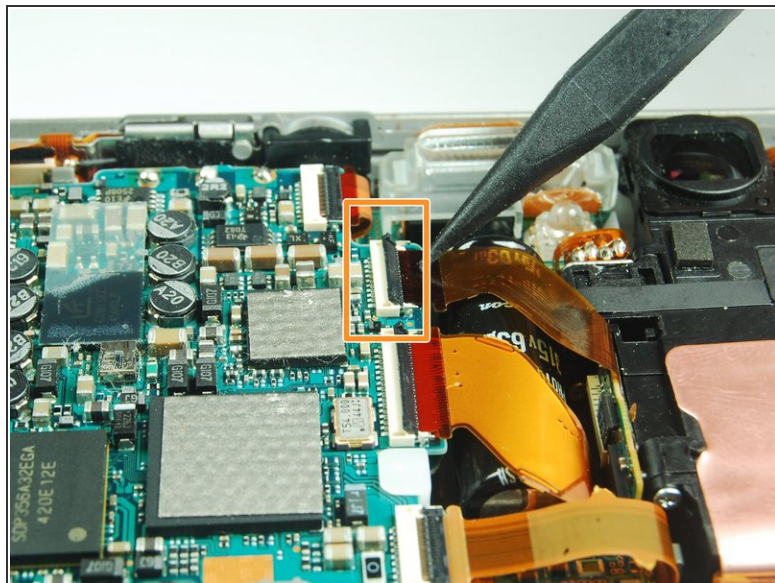
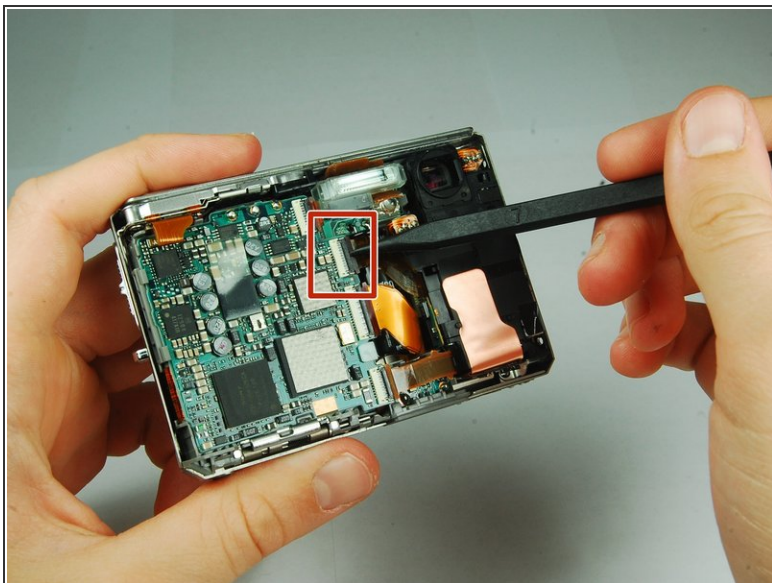
-  There are two screws on the left and right sides of the camera, and two screws on the bottom.
- Use a PH00 screwdriver and remove the six 2.9mm screws.

### Step 4



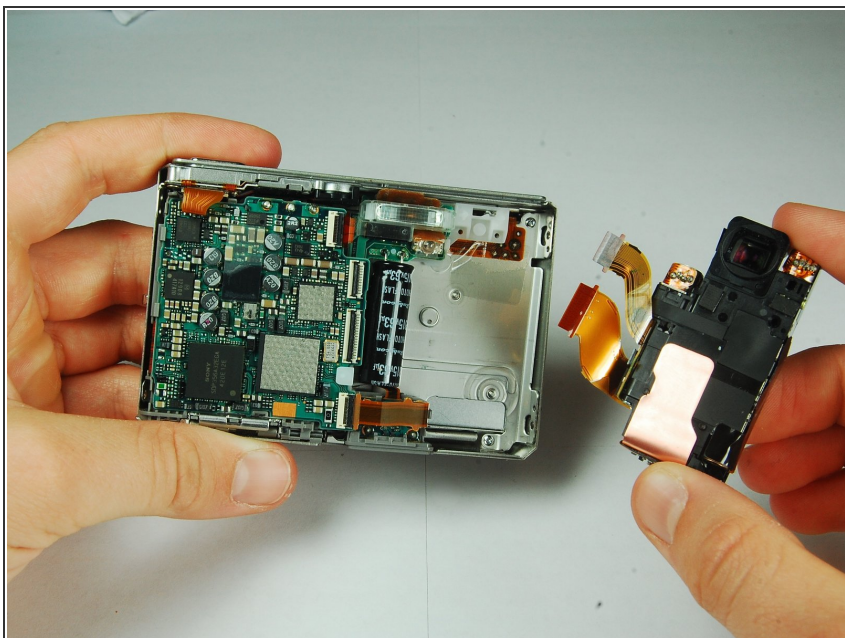
- Use hands to gently pry the front casing away from the camera.

## Step 5 — CCD Sensor Module



- Use the tip of a spudger to flip up the tab on the ZIF connector securing the motherboard ribbon cable.
- The second picture shows what these tabs look like in their open positions.

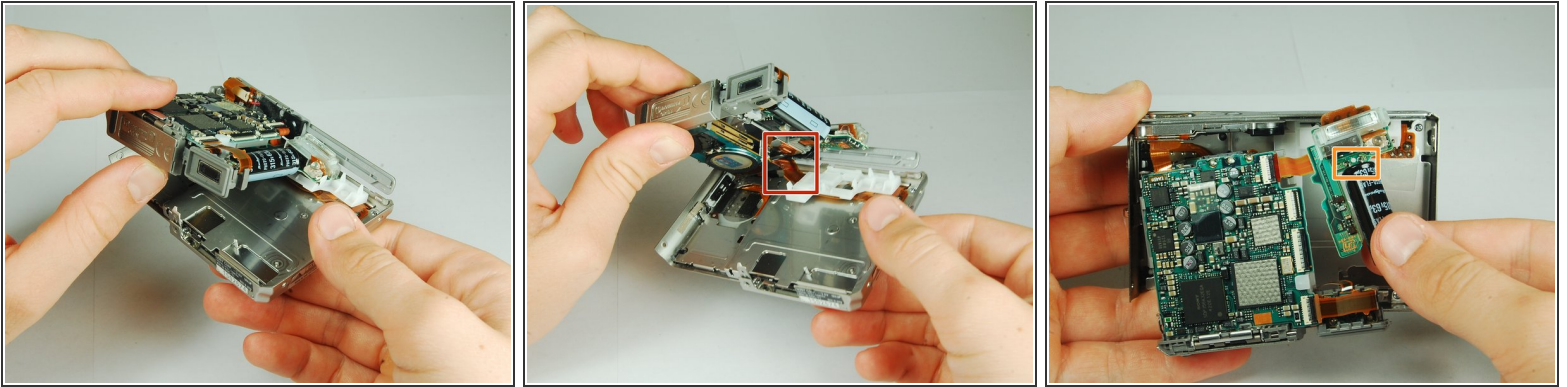
## Step 6




- Grasp the CCD Sensor Module and remove it.



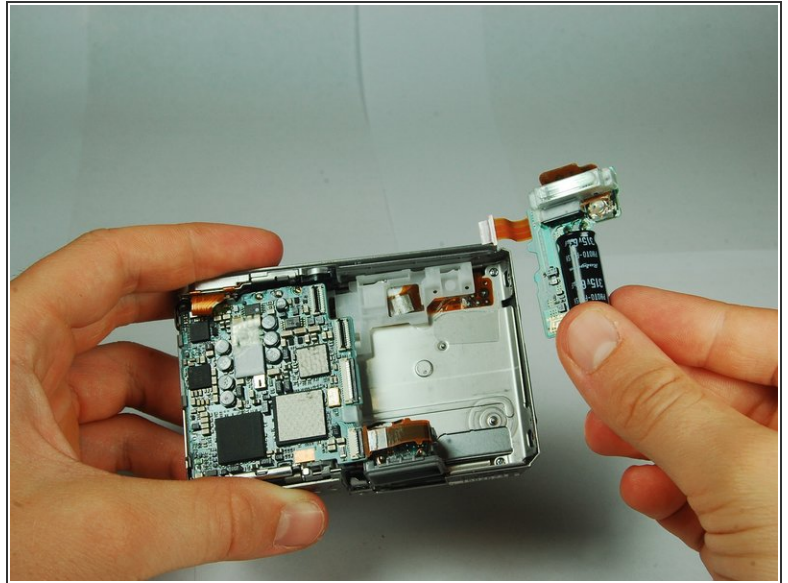
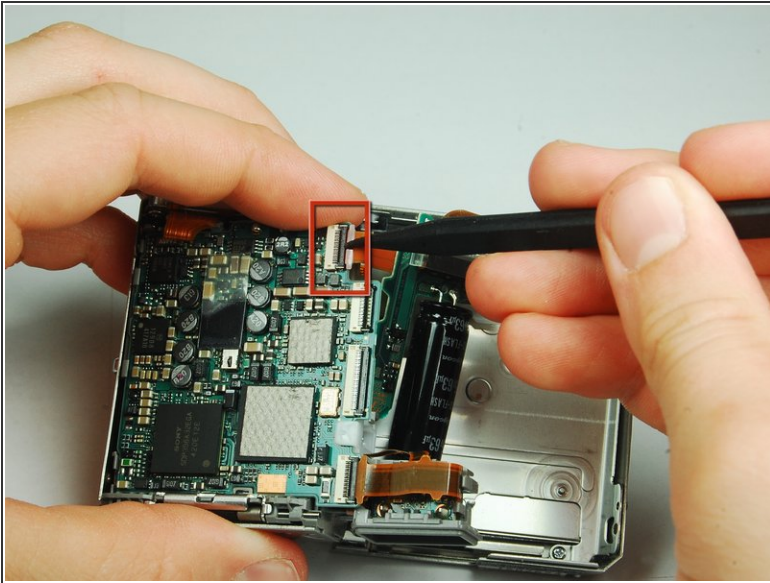
## Step 7 — Flash Module



 This camera houses a very strong capacitor (the black cylinder). Avoid touching anything around the two wires coming out of the top. Doing so will risk serious electric shock.

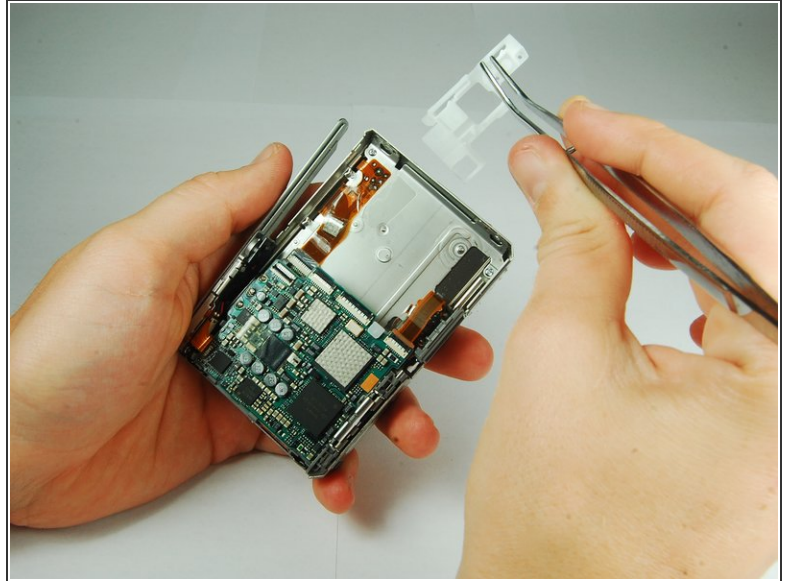
- Carefully disengage the internal components from the casing by lifting at the bottom end and giving a gentle tug.
- The components are still connected to the casing via cables, but they are much more maneuverable.
- The flash module is shown on the right hand side.

## Step 8



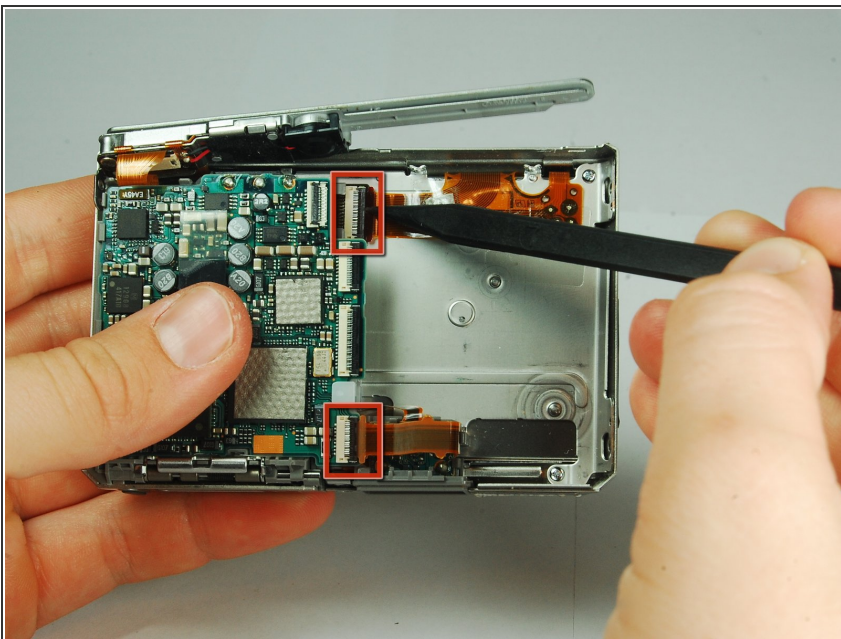
- Use the tip of a spudger to flip up the tab on the ZIF connector securing the motherboard ribbon cable.
- Grasp the flash module by the bottom and remove it.

## Step 9 — Motherboard Assembly



- Use tweezers to slide the white piece on the back of the back cover to the right.
- This will dislodge the white piece, allowing you to remove it from the back cover.

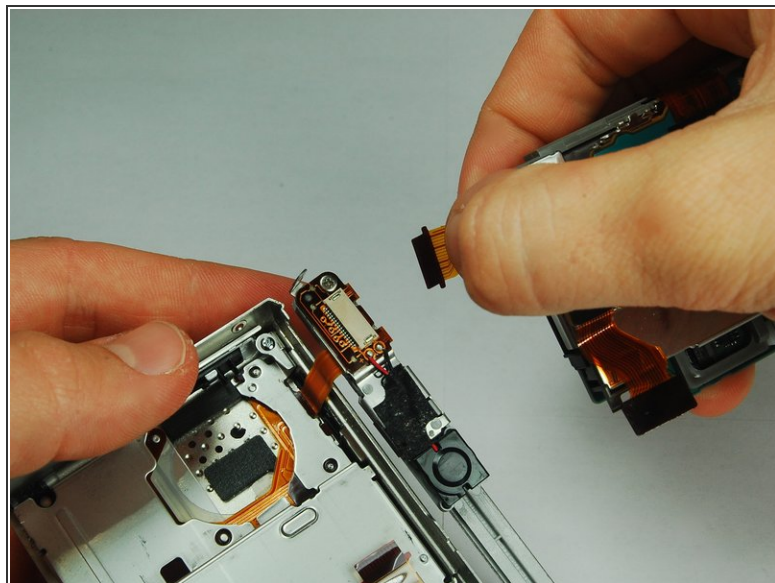
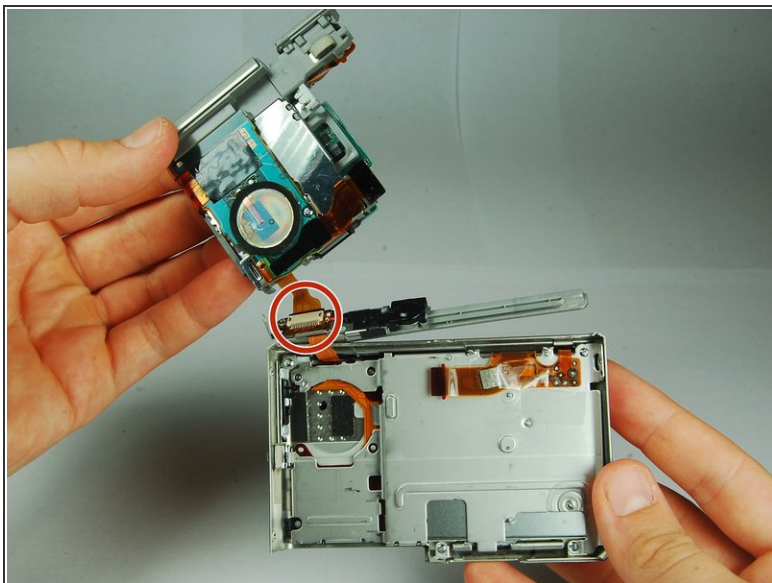
## Step 10



- Use the tip of a spudger to flip up the tab on the ZIF connector securing the motherboard ribbon cable.
- Remove the ribbon cables from these two ZIF connectors.



## Step 11



- Lift the motherboard assembly up and rotate it so you can easily see where the internals connect to the back cover.
- Remove the ZIF connectors from the clamp on the left end of the top piece.
- The motherboard assembly is now separated from the back cover.

To reassemble your device, follow these instructions in reverse order.