



Sony Cyber-shot DSC-T500 Front Panel Replacement

If the front panel on your Sony Cyber-shot DSC-T500 is ever damaged or the sliding cover attached to it is damaged, you will be able to follow this guide in order to remove and replace it.

Written By: Daniel Surgenor



INTRODUCTION

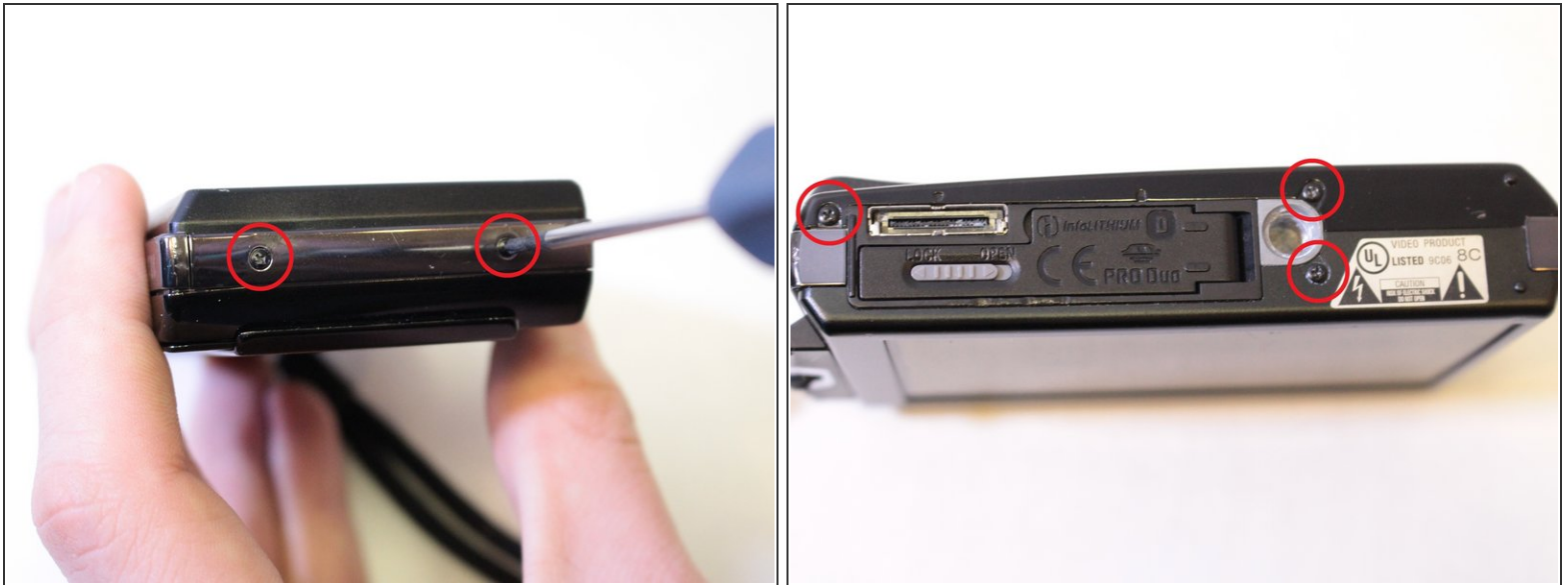
This simple 2 step guide will show you how to remove the front panel in order to maintain or replace it.



TOOLS:

- [Phillips #00 Screwdriver](#) (1)
-

Step 1 — Front Panel



- Remove all seven black 4 mm Philips #00 screws holding the front panel into place. Two on each of the sides of the camera and three on the bottom.

Step 2



- Gently lift the front panel up off the back of the camera prying up around the edges using a plastic opening tool or spudger if necessary.

To reassemble your device, follow these instructions in reverse order.